


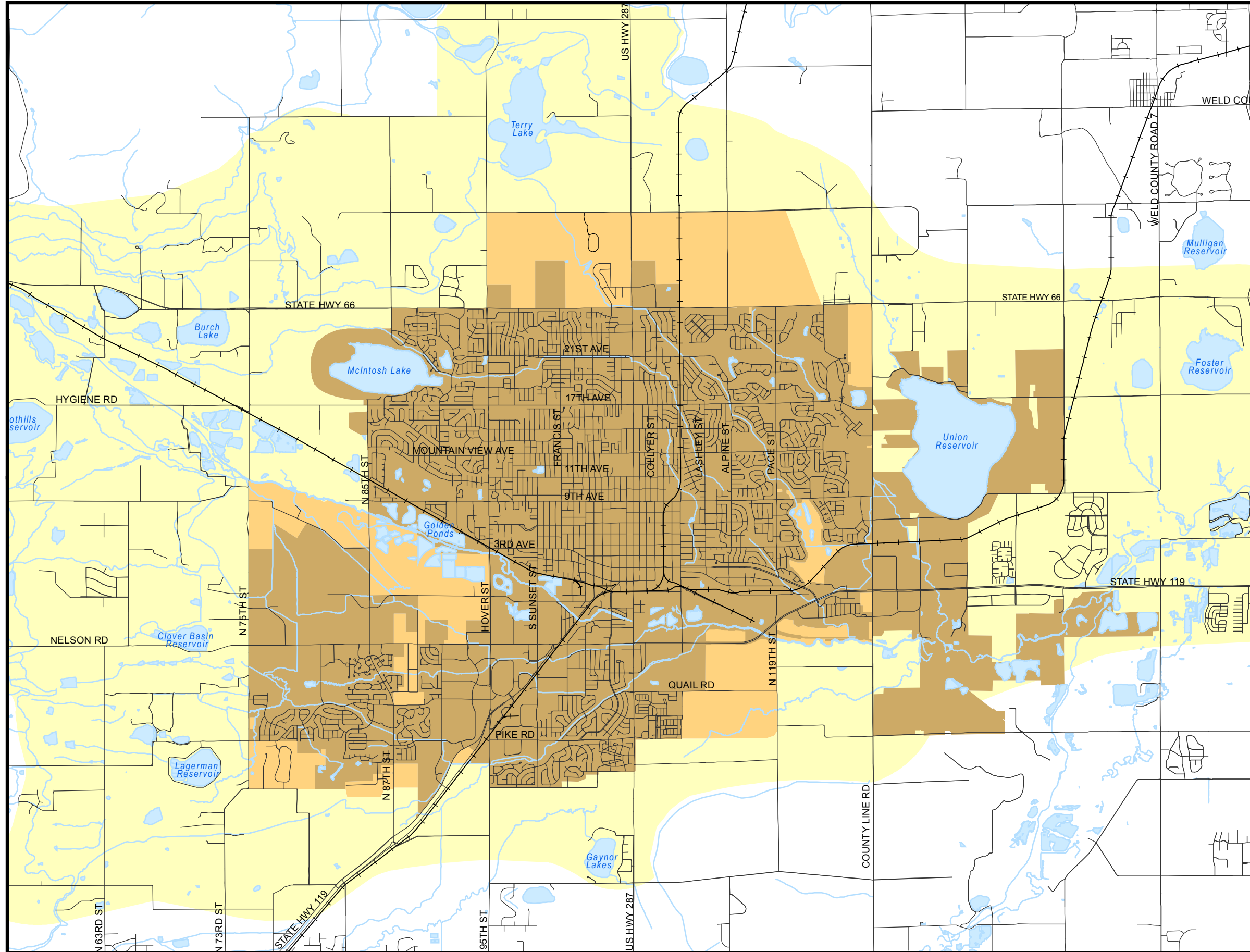


LONGMONT AREA COMPREHENSIVE PLAN

Three-Tier Planning System

Legend

-  Municipal Service Area (MSA)
-  Longmont Planning Area (LPA)
-  St. Vrain Valley Planning Area (SVVPA)



August 26, 2003
(Includes amendments through July 22, 2014)

**Planning & Development
Services Department**