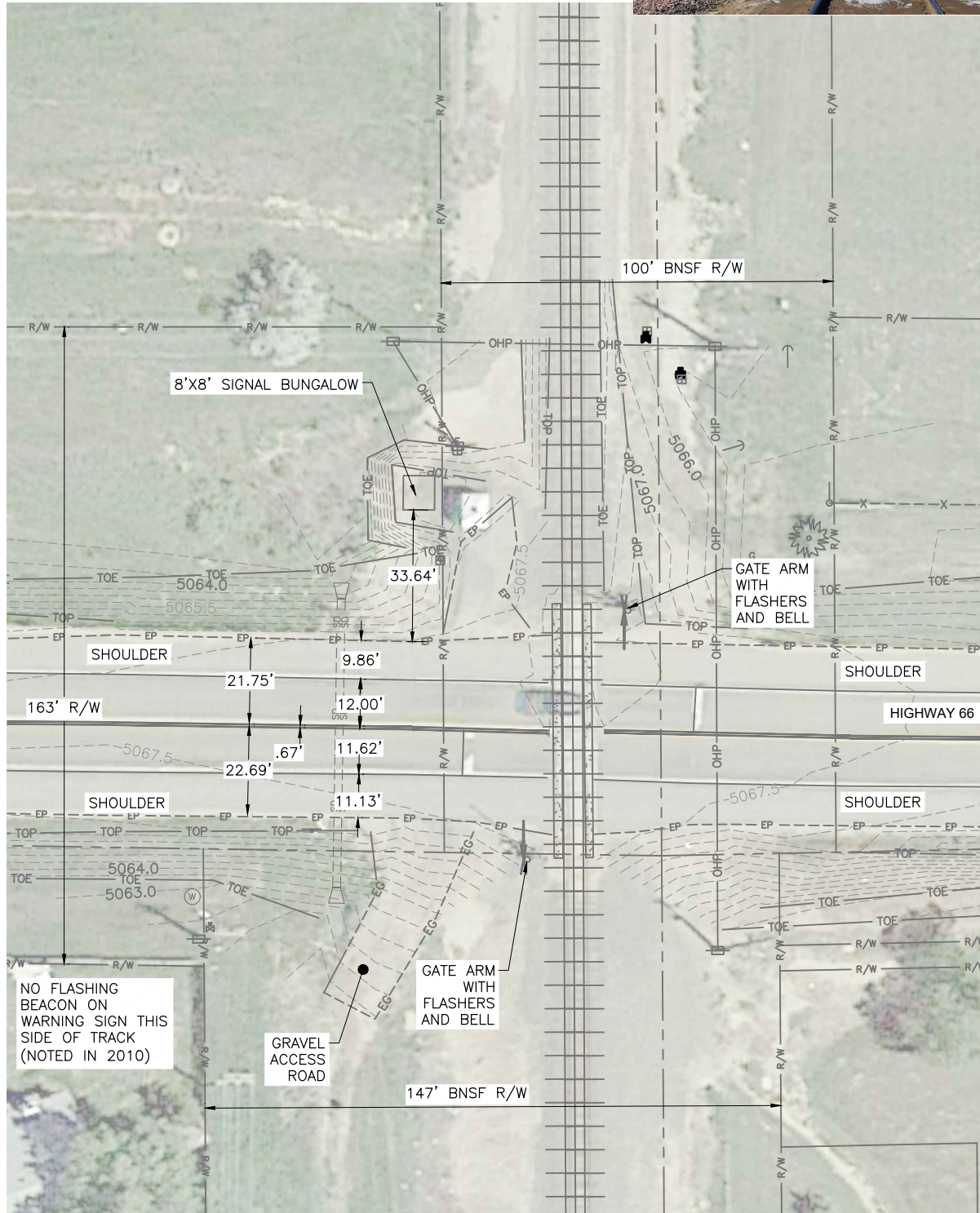
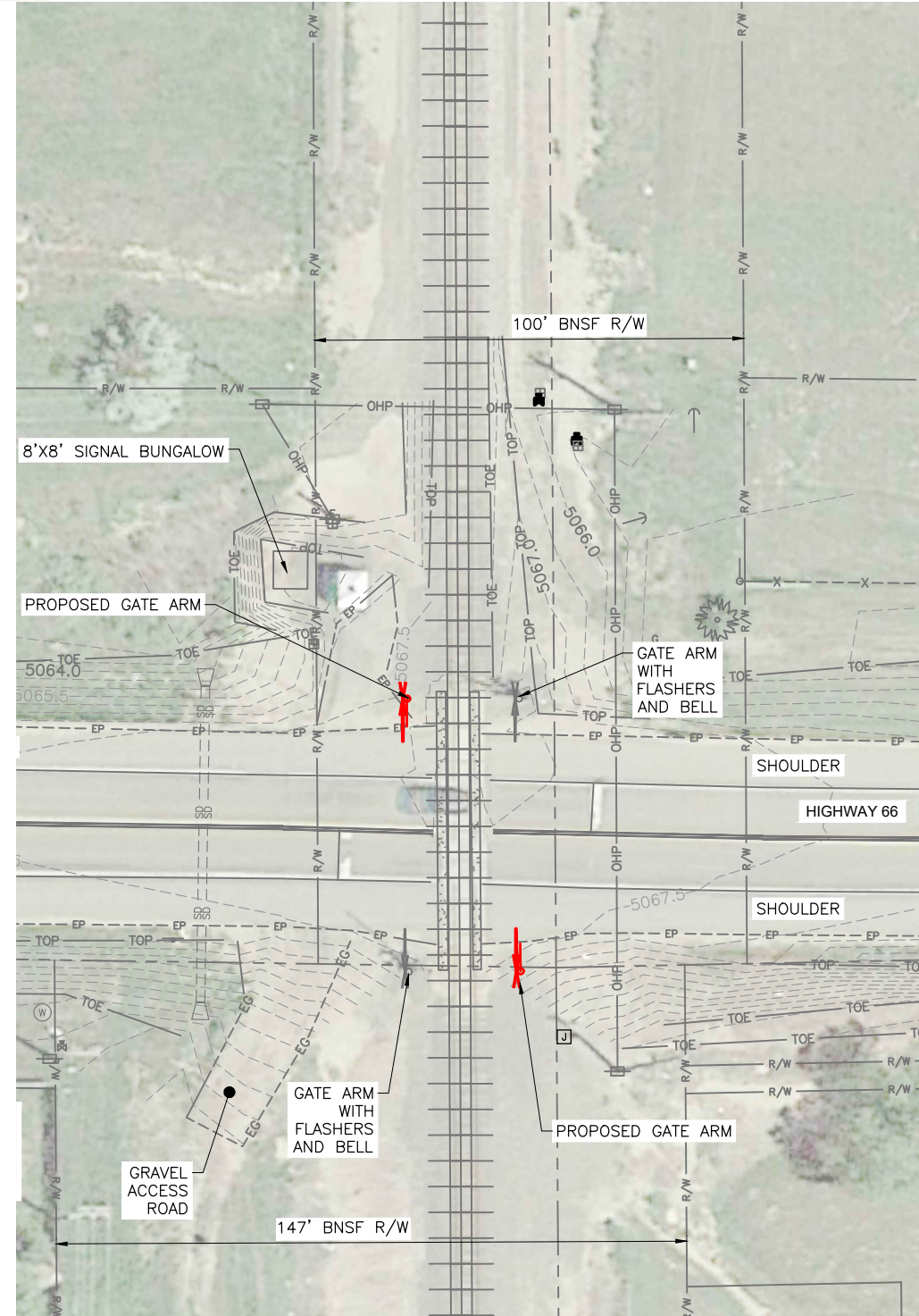


**EXISTING CONDITION**



**PROPOSED CONDITION**



**HIGHWAY 66**

- 2019.06.04 INVENTORY #245010J:
- 1996 AADT = 9,050 W/ 5% TRUCKS
  - DC DETECTION
- PASSIVE:
- ADVANCE WARNING SIGNS
    - NO W10-1 SIGN (UPDATE INVENTORY)
    - 1 EASTBOUND LANE - 400 FT FROM TRACK CENTER
  - STRIPING/PAVING -
    - STOP
    - RR XING SYMBOL
- ACTIVE:
- 2 GATE ARMS
  - 2 MAST MOUNTED FLASHERS
  - 1 BELLS

- HIGHWAY 66:
- ARTERIAL (CDOT)
  - ASPHALT
    - 2 LANES WITH SHOULDER
  - 50 MPH WEST OF CROSSING
  - 60 MPH VICINITY OF CROSSING
  - MAINTENANCE BY CITY FROM MAIN STREET TO PACE
  - NO SIDEWALK
  - 2018 ADT = 21,000 (CDOT)

- IMPROVEMENTS BY OTHERS:
- FHU CO 66 PEL STUDY - IN PROCESS

- PROPOSED IMPROVEMENTS:
- CWT CIRCUITRY
  - 2 GATES
    - POSITION WITH FUTURE WIDENING IMPROVEMENTS?
  - NEW BUNGALOW

- DESIGN MINIMUM LANE WIDTH:
- 12' DRIVE COMMERCIAL
  - 5' BIKE

- ABBREVIATIONS:
- ADT - AVERAGE DAILY TRAFFIC
  - AADT - ANNUAL AVERAGE DAILY TRAFFIC
  - C&G - CURB AND GUTTER
  - R/W - RIGHT OF WAY
  - VERT - VERTICAL



Know what's below.  
Call before you dig.



J-U-B ENGINEERS, INC.

J-U-B ENGINEERS, INC.  
3538 JFK Parkway  
Suite #1  
Fort Collins, CO 80525  
Phone: 970.377.3602  
Fax: 970.377.3935  
www.jub.com



EXHIBIT - NOT FOR CONSTRUCTION

REUSE OF DRAWINGS  
THIS DOCUMENT AND THE IDEAS AND DESIGNS INCORPORATED HEREIN ARE THE PROPERTY OF JUB ENGINEERS, INC. AND IS NOT TO BE USED IN WHOLE OR PART FOR ANY OTHER PROJECT WITHOUT THE EXPRESS WRITTEN AUTHORIZATION OF JUB ENGINEERS, INC.

NO.	REVISION	DESCRIPTION	BY	APPR.	DATE

QUIET ZONE PRELIMINARY DESIGN  
LONGMONT, CO

HIGHWAY 66

FILE: HWY66\_EXHIBIT  
JUB PROJ. #: 87-19-002  
DRAWN BY: KK  
DESIGN BY: KK  
CHECKED BY: ALM  
AT FULL SIZE, IF NOT ONE INCH SCALE ACCORDINGLY  
LAST UPDATED: 9/23/2019

DRAWING NUMBER:

**EX**

SHEET  
1



- 2000.07.31 INVENTORY #094525C:  
NOTED AS CLOSURE - (UPDATE INVENTORY)
- 1989 AADT = 5,050 W/ 2% TRUCKS
  - DC DETECTION
- PASSIVE:
- SIGN
    - W10-1 SIGN
    - 2 CROSSBUCKS
  - STRIPING/PAVING -
    - STOP
    - RR XING SYMBOL
- ACTIVE:
- 2 GATE ARMS - WC HAYES
  - 2 MAST MOUNTED FLASHERS
  - 1 BELL
  - 6 FLASHING LIGHTS ON GATES

- 21ST AVE:
- COLLECTOR OR MINOR ARTERIAL
  - ASPHALT
    - 2 LANES, BIKE & PARKING
  - 30 MPH
  - ADT = 3,700 (CITY)
- BIKE/DRIVE WIDTH AT POP-OUT IS NARROW ALONG THE SOUTH SIDE AND DOES NOT MEET MINIMUM LANE WIDTH TO ACCOMMODATE A VEHICLE AND BIKE AT THE SAME TIME.

- PROPOSED IMPROVEMENTS:
- CWT CIRCUITRY
  - NEW BUNGALOW
  - 3' WIDE MEDIAN - 6" HEIGHT
  - STRIPING
  - CURB & GUTTER - 6" HEIGHT

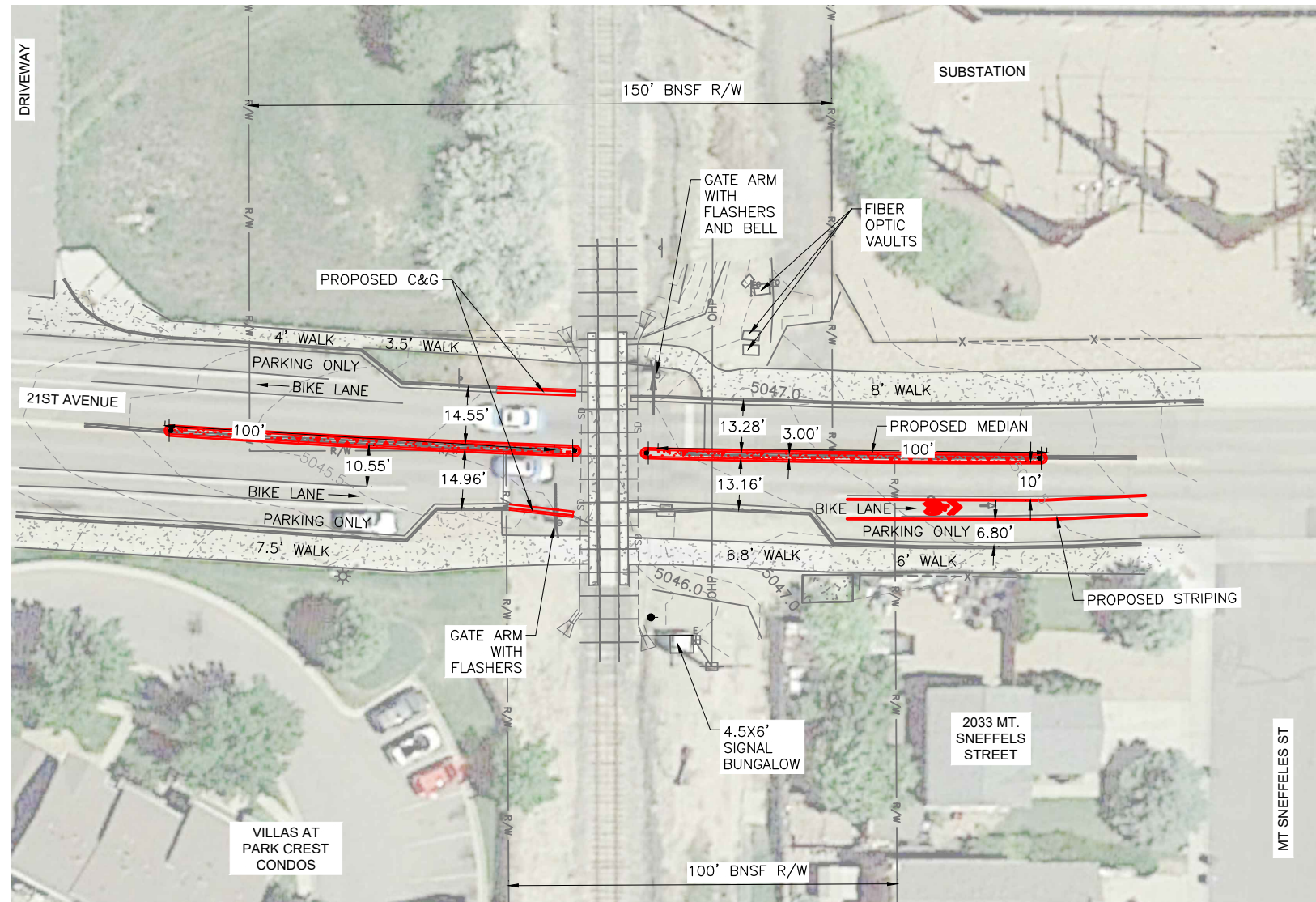
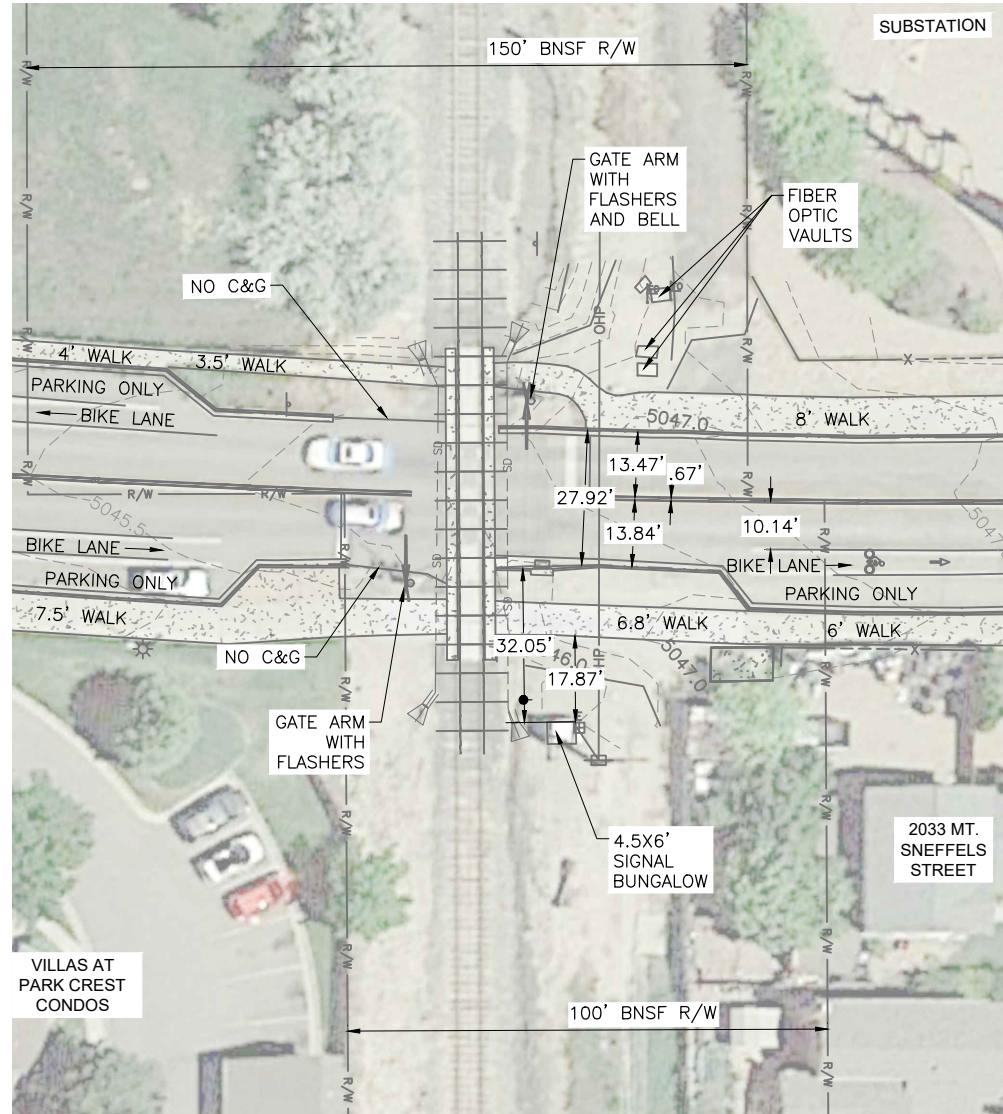
- DESIGN MINIMUM LANE WIDTH:
- 10' DRIVE
  - 12' COMMERCIAL
  - 7' PARKING
  - 5' BIKE

- ABBREVIATIONS:
- ADT - AVERAGE DAILY TRAFFIC
  - AADT - ANNUAL AVERAGE DAILY TRAFFIC
  - VERT - VERTICAL
  - C&G - CURB AND GUTTER
  - OHP - OVERHEAD POWER LINE

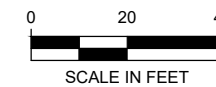
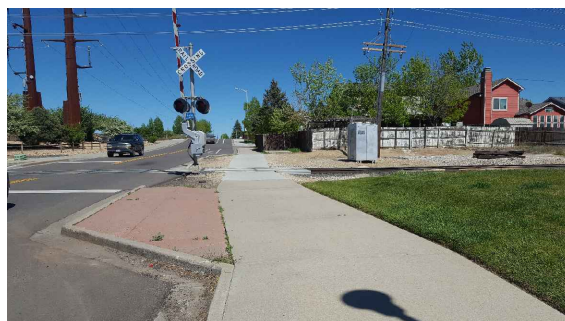
- REMOVE POP-OUT ALONG SOUTH SIDE FOR ADDITIONAL WIDTH?
- RELOCATE INLET
  - RELOCATE SOUTHERN GATE ARM

EXISTING CONDITION

PROPOSED CONDITION



21ST AVENUE



Know what's below.  
Call before you dig.



J-U-B ENGINEERS, INC.  
3538 JFK Parkway  
Suite #1  
Fort Collins, CO 80525  
Phone: 970.377.3602  
Fax: 970.377.3935  
www.jub.com



REUSE OF DRAWINGS  
THIS DOCUMENT AND THE IDEAS AND DESIGNS INCORPORATED HEREIN ARE THE PROPERTY OF JUB ENGINEERS, INC. AND IS NOT TO BE USED IN WHOLE OR PART FOR ANY OTHER PROJECT WITHOUT THE EXPRESS WRITTEN AUTHORIZATION OF JUB ENGINEERS, INC.

NO.	REVISION	DESCRIPTION	BY	DATE

QUIET ZONE PRELIMINARY DESIGN  
LONGMONT, CO  
21ST AVENUE

FILE : 21STA EXHIBIT  
JUB PROJ. # : 87-19-002  
DRAWN BY: KK  
DESIGN BY: KK  
CHECKED BY: ALM  
AT FULL SIZE, IF NOT ONE INCH SCALE ACCORDINGLY  
LAST UPDATED: 9/24/2019

DRAWING NUMBER:  
**EX**  
SHEET  
2



**2019.06.04 INVENTORY #245009P:**

- 1994 AADT = 8,550 W/ 5% TRUCKS
- CWT DETECTION

**PASSIVE:**

- SIGNS
  - NO W10-1 (UPDATE INVENTORY)
  - 2 CROSSBUCKS
- STRIPING/MARKINGS -
  - STOP
  - RR XING SYMBOL

**ACTIVE:**

- 2 GATE ARMS - SIEMENS
- 4 MAST MOUNTED FLASHERS
- 2 BELLS

**17TH AVE:**

- MINOR ARTERIAL
- ASPHALT
  - 4 LANES WITH PARKING/SHOULDER
  - STRIPED MEDIAN
- RAISED MEDIAN
  - CURB HEIGHT = 6"
- 35 MPH
- ADT = 17,200 (CITY)

**PROPOSED IMPROVEMENTS:**

- EXTEND RAISED MEDIAN
  - 6" HEIGHT

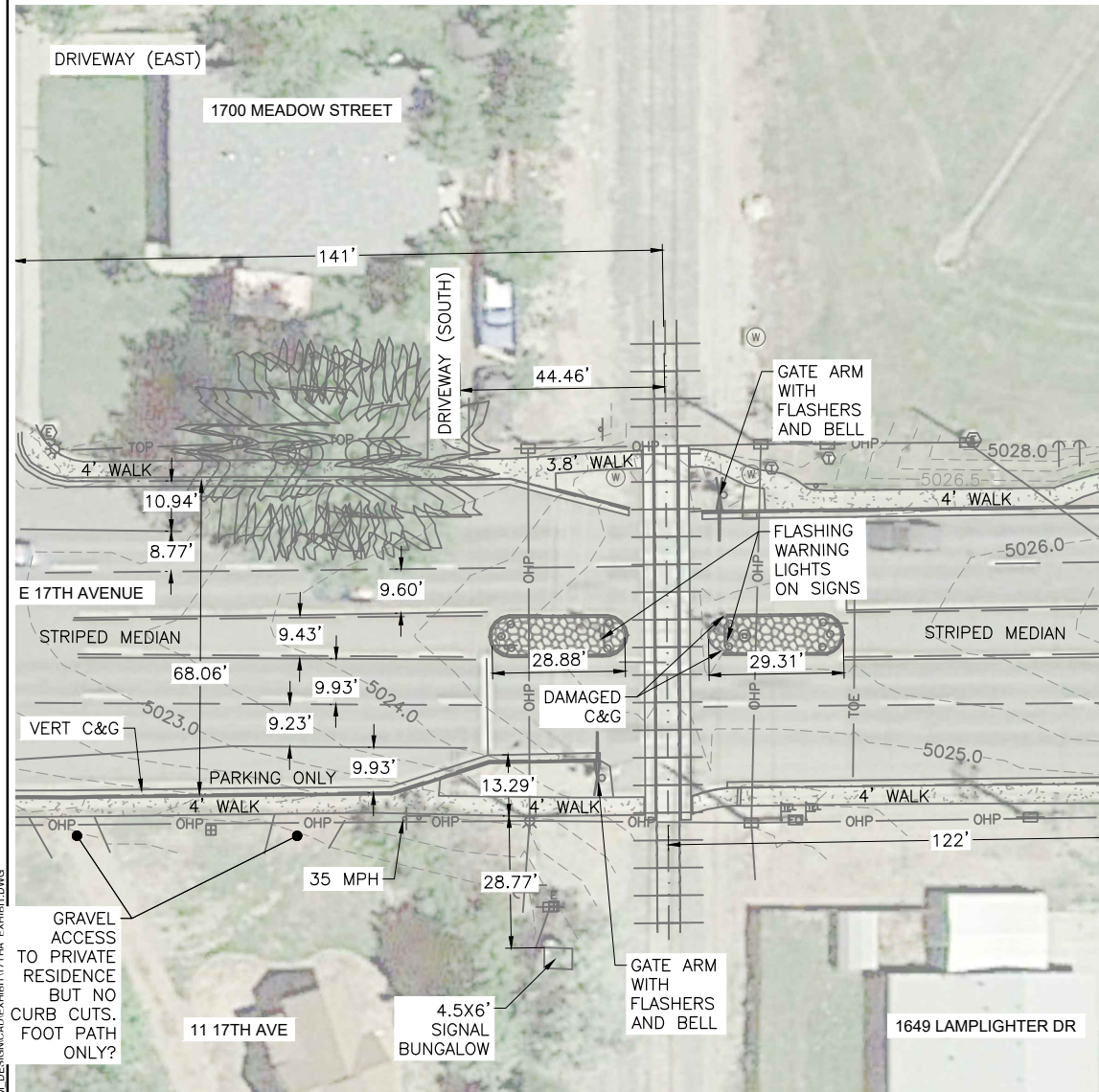
**OTHER:**

- PRIVATE LOT AT 1700 MEADOW ST. HAS ACCESS FROM BOTH ROADS - 2 DRIVEWAYS

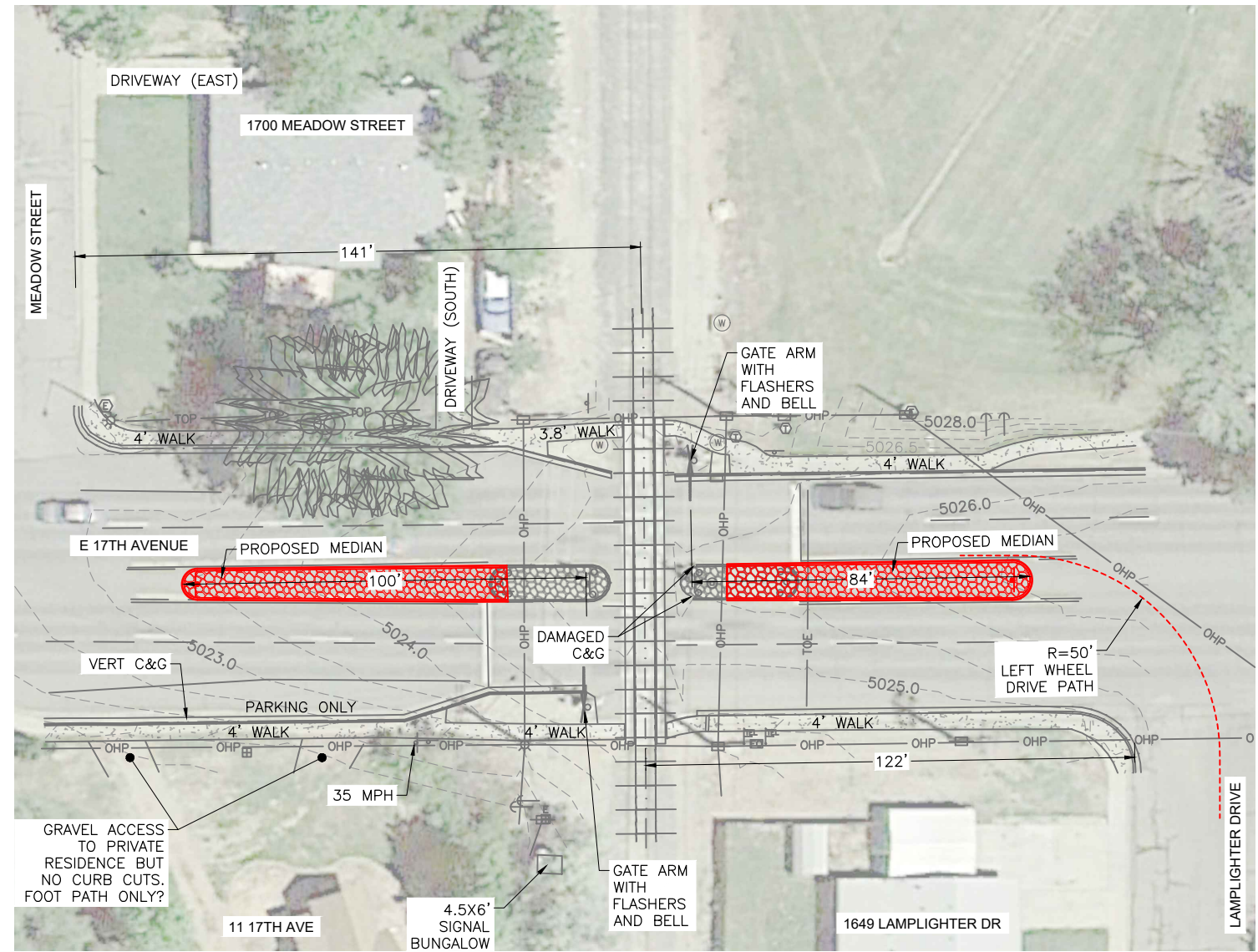
**DESIGN MINIMUM LANE WIDTH:**

- 10' DRIVE
- 12' DRIVE COMMERCIAL
- 7' PARKING
- 5' BIKE

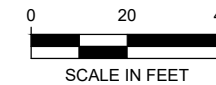
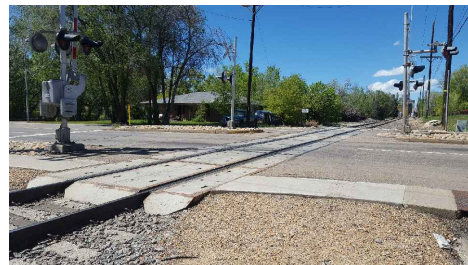
**EXISTING CONDITION**



**PROPOSED CONDITION**



**17TH AVENUE**



**JUB**  
J-U-B ENGINEERS, INC.  
3538 JFK Parkway  
Suite #1  
Fort Collins, CO 80525  
Phone: 970.377.3602  
Fax: 970.377.3935  
www.jub.com



REUSE OF DRAWINGS  
THIS DOCUMENT AND THE IDEAS AND DESIGNS INCORPORATED HEREIN ARE THE PROPERTY OF JUB ENGINEERS, INC. AND IS NOT TO BE USED IN WHOLE OR PART FOR ANY OTHER PROJECT WITHOUT THE EXPRESS WRITTEN AUTHORIZATION OF JUB ENGINEERS, INC.

NO.	REVISION	DESCRIPTION	BY	DATE

**QUIET ZONE PRELIMINARY DESIGN**  
**LONGMONT, CO**  
**17TH AVENUE**

FILE : 17THA\_EXHIBIT  
JUB PROJ. # : 87-19-002  
DRAWN BY: KK  
DESIGN BY: KK  
CHECKED BY: ALM  
AT FULL SIZE, IF NOT ONE INCH SCALE ACCORDINGLY  
LAST UPDATED: 9/24/2019  
DRAWING NUMBER:  
**EX**  
SHEET  
**3**



**2019.07.26 INVENTORY #245008H:**

- DC DETECTION
- 1994 AADT = 6,600 W/ 5% TRUCKS

**PASSIVE:**

- SIGN
  - NO W10-1 (UPDATE INVENTORY)
  - 2 CROSSBUCKS
- STRIPING -
  - STOP
  - RR XING SYMBOL

**ACTIVE:**

- 2 CANTILEVER STRUCTURES
- 2 MAST MOUNTED FLASHERS
- 6 FLASHING LIGHT PAIRS
- 1 BELL

**MOUNTAIN VIEW AVE:**

- COLLECTOR
- ASPHALT
  - 2 LANES WITH SHOULDER/PARKING
- 30 MPH
- ADT = 6,700 (CITY)

**PROPOSED IMPROVEMENTS:**

- CWT CIRCUITRY
- NEW BUNGALOW
- 2 GATES
- MEDIAN
  - 6" HEIGHT
- STRIPING

CANTILEVERS CAN BE REMOVED WITH PUC APPROVAL.

DOES THE ACCESS ON THE SOUTH-EAST SIDE NEED TO BE REMOVED BY ADDING C&G?

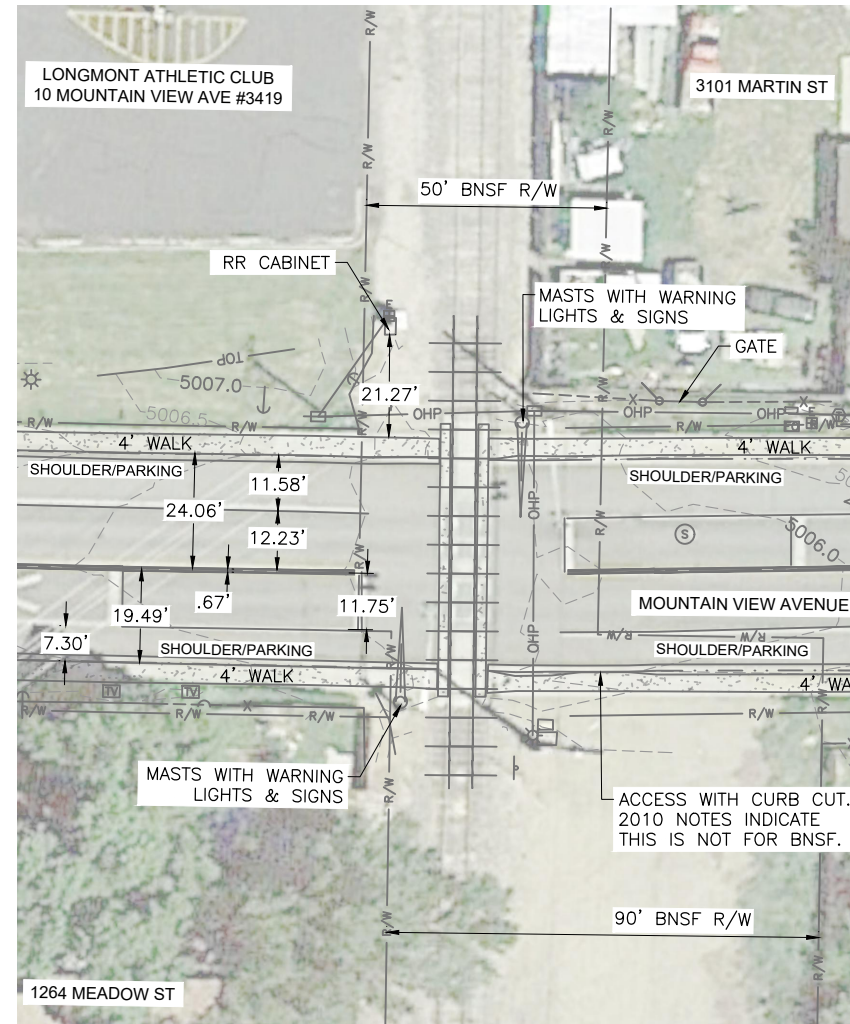
**DESIGN MINIMUM LANE WIDTH:**

- 10' DRIVE
- 12' DRIVE COMMERCIAL
- 7' PARKING
- 5' BIKE

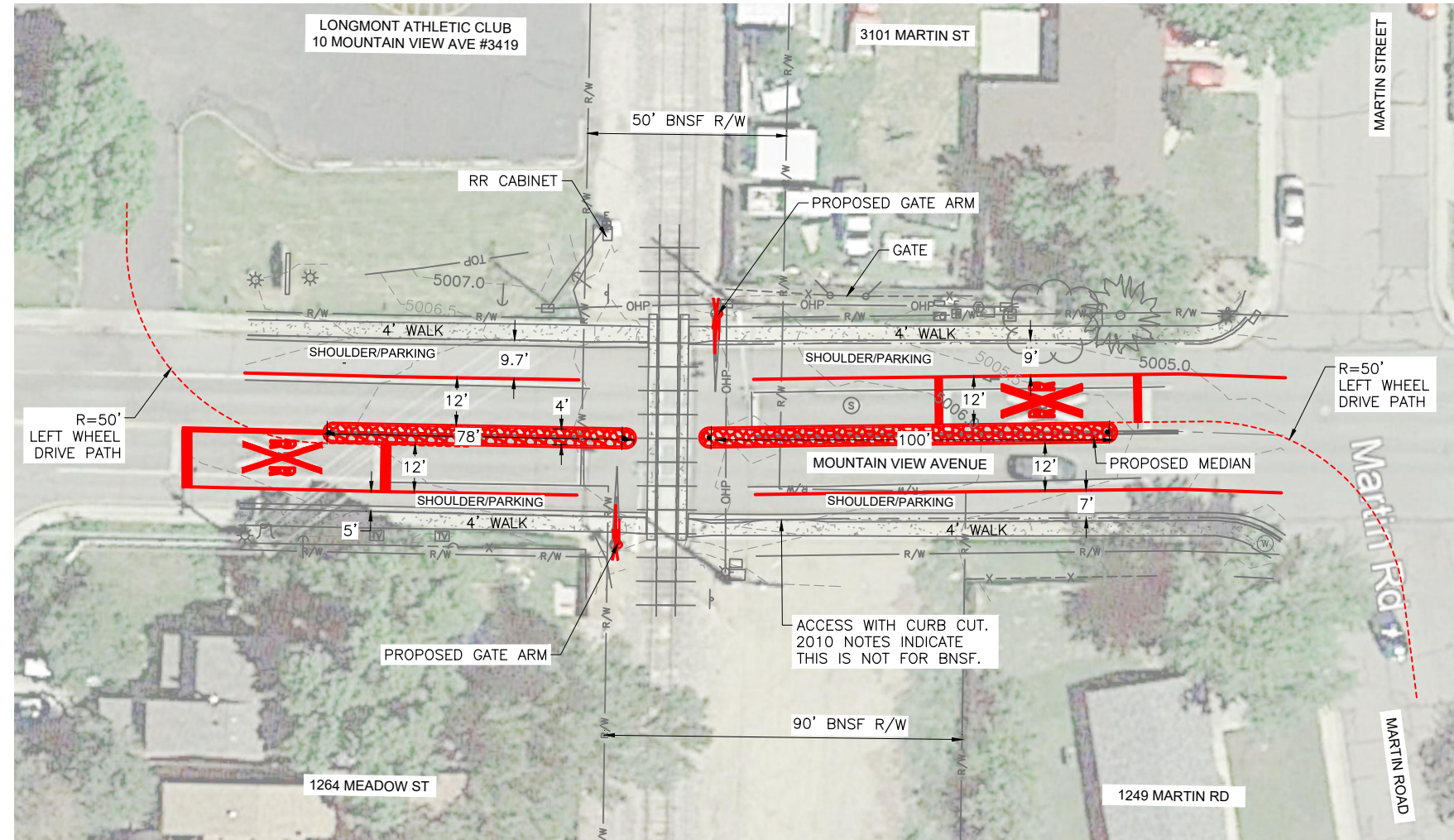
**ABBREVIATIONS:**

- ADT - AVERAGE DAILY TRAFFIC
- AADT - ANNUAL AVERAGE DAILY TRAFFIC
- C&G - CURB AND GUTTER
- R/W - RIGHT OF WAY
- VERT - VERTICAL

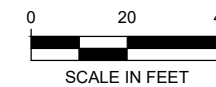
**EXISTING CONDITION**



**PROPOSED CONDITION**



**MOUNTAIN VIEW AVENUE**



**J-U-B ENGINEERS, INC.**  
 3538 JFK Parkway  
 Suite #1  
 Fort Collins, CO 80525  
 Phone: 970.377.3602  
 Fax: 970.377.3935  
 www.jub.com



EXHIBIT - NOT FOR CONSTRUCTION

REUSE OF DRAWINGS  
 THIS DOCUMENT AND THE IDEAS AND DESIGNS INCORPORATED HEREIN ARE THE PROPERTY OF JUB ENGINEERS, INC. AND IS NOT TO BE USED IN WHOLE OR PART FOR ANY OTHER PROJECT WITHOUT THE EXPRESS WRITTEN AUTHORIZATION OF JUB ENGINEERS, INC.

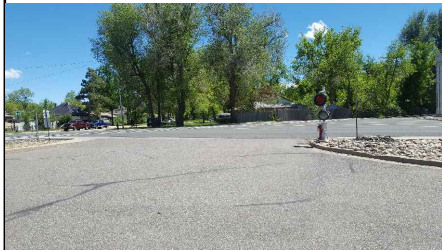
NO.	DESCRIPTION	BY	DATE

**QUIET ZONE PRELIMINARY DESIGN**  
**LONGMONT, CO**  
**MOUNTAIN VIEW AVENUE**

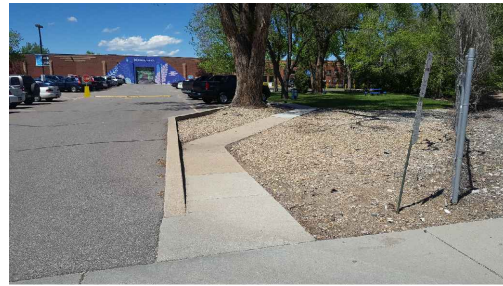
FILE : MTVA EXHIBIT  
 JUB PROJ. # : 87-19-002  
 DRAWN BY: KK  
 DESIGN BY: KK  
 CHECKED BY: ALM  
 AT FULL SIZE, IF NOT ONE INCH SCALE ACCORDINGLY  
 LAST UPDATED: 9/24/2019  
 DRAWING NUMBER:  
**EX**  
 SHEET  
**4**

Plot Date: 9/24/2019 9:55 AM Plotted By: Amber Moore  
 Date Created: 9/24/2019 File Path: J:\LONGMONT\87-19-002 QUIET ZONES PRELIM DESIGN\CAD\EXHIBIT\MTVA EXHIBIT.DWG

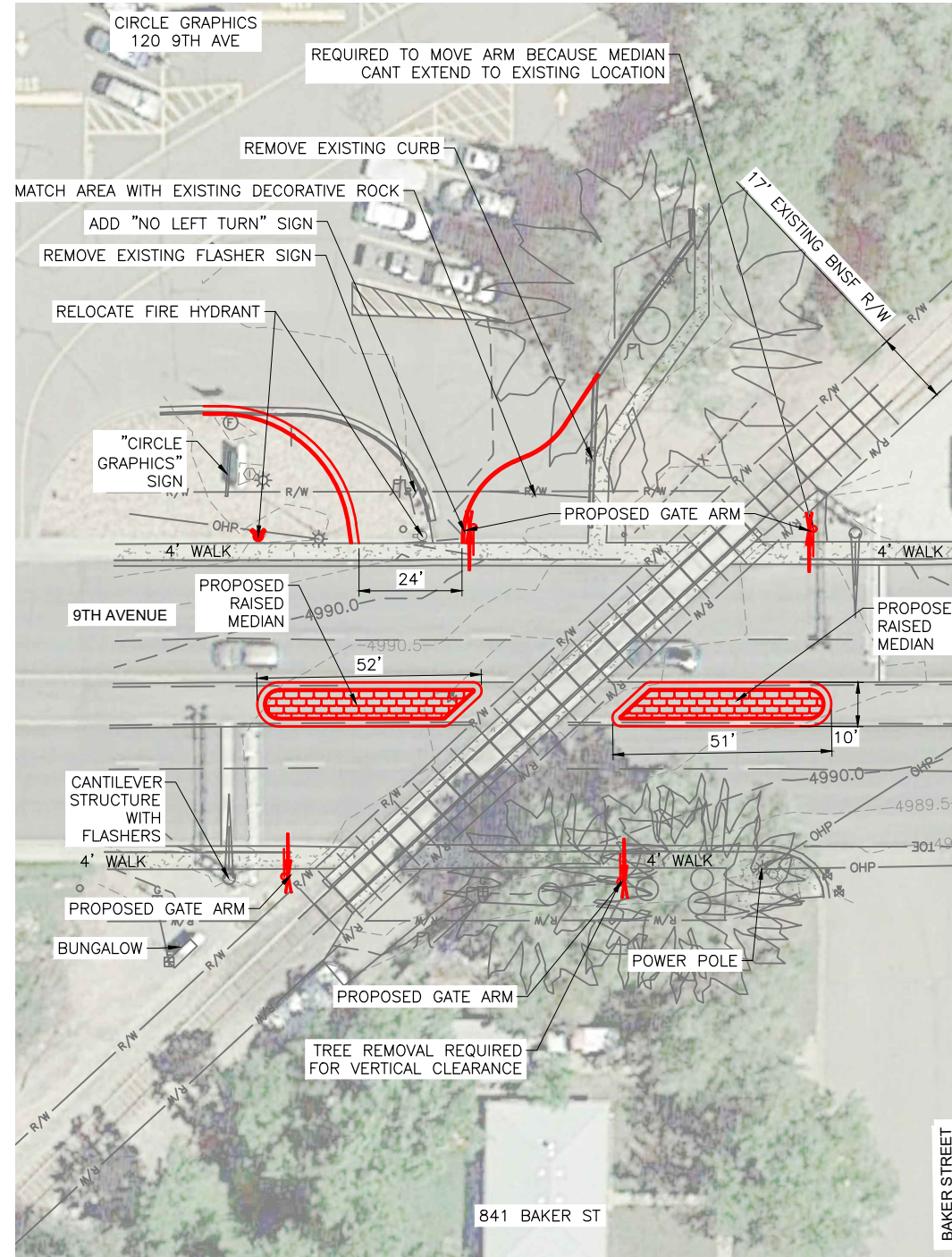
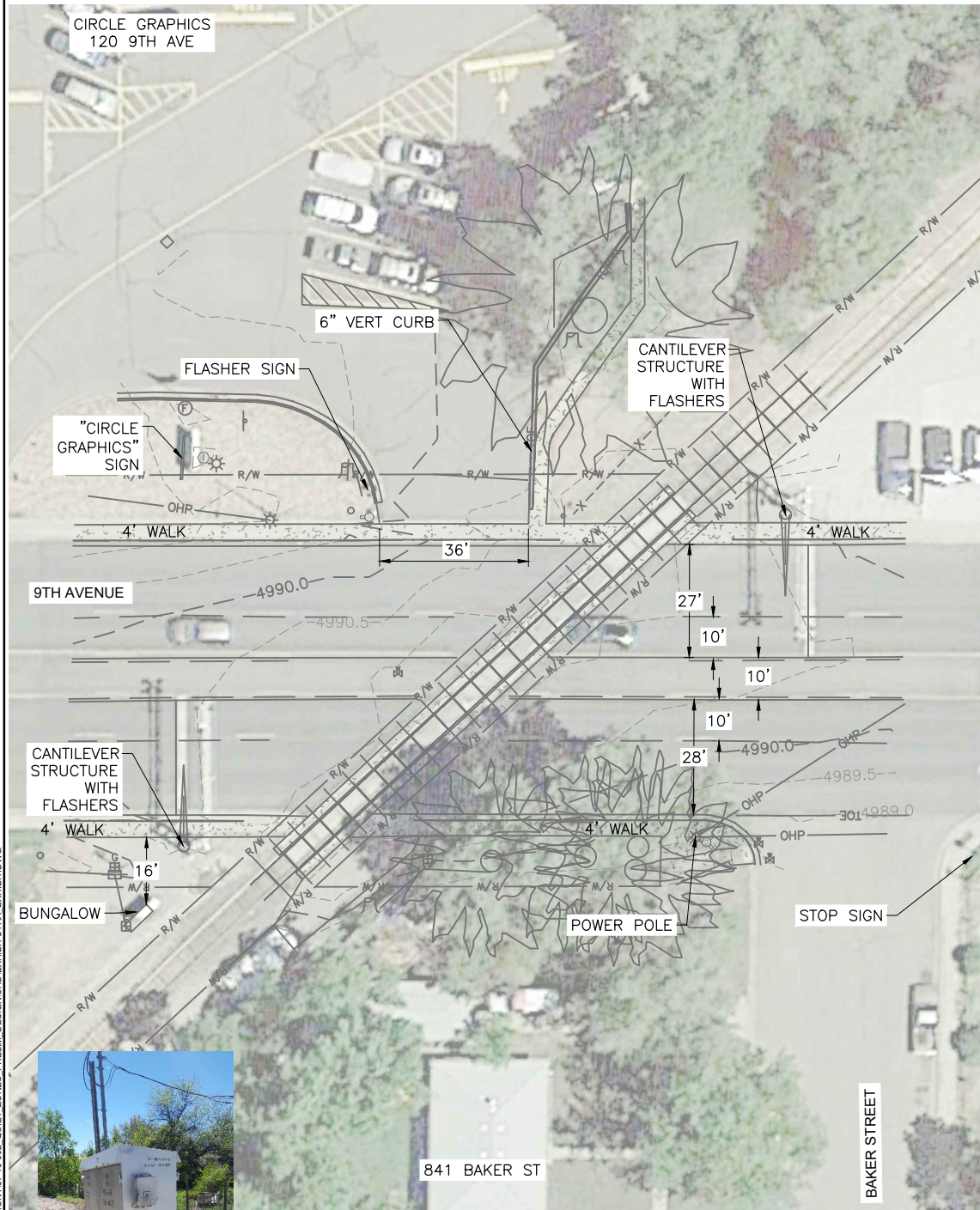




EXISTING CONDITION



PROPOSED CONDITION



9TH AVENUE

- 2019.06.04 INVENTORY #245007B:
- 1994 AADT = 9,450 W/ 5% TRUCKS
  - DC DETECTION
- PASSIVE:
- SIGN
    - NO W10-1 (UPDATE INVENTORY)
    - 2 CROSSBUCKS
  - STRIPING -
    - STOP LINES
    - RR KING SYMBOL
- ACTIVE:
- 2 CANTILEVER STRUCTURES
  - 2 MAST MOUNTED FLASHERS
  - 1 BELL

- 9TH AVE:
- MINOR ARTERIAL
  - ASPHALT
  - 4 LANES WITH SHOULDER/PARKING
  - PAINTED MEDIAN
  - 35 MPH
  - ADT = 15,500 (CITY)

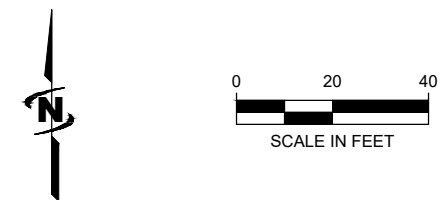
- PROPOSED IMPROVEMENTS:
- CWT CIRCUITRY
  - NEW BUNGALOW
    - 30' OFFSET
  - 4 GATES - GATE ARMS WILL SPAN ACROSS TWO LANES OF TRAFFIC.
    - MAX LENGTH OF ARM = 38' (VERIFY)
    - MEDIAN
    - 6" HEIGHT
  - RELOCATE FIRE HYDRANT

DISCUSSIONS WITH CIRCLE GRAPHICS FOR COORDINATION OF DRIVEWAY AND TRUCK TRAFFIC THROUGH PARKING LOT. NO ISSUES NOTED AT THIS TIME.

NARROW DRIVEWAY FOR RIGHT-IN AND RIGHT-OUT ONLY.

- DESIGN MINIMUM LANE WIDTH:
- 10' DRIVE
  - 12' DRIVE COMMERCIAL
  - 7' PARKING
  - 5' BIKE

- ABBREVIATIONS:
- ADT - AVERAGE DAILY TRAFFIC
  - AADT - ANNUAL AVERAGE DAILY TRAFFIC
  - C&G - CURB AND GUTTER
  - R/W - RIGHT OF WAY
  - VERT - VERTICAL



J-U-B ENGINEERS, INC.  
3538 JFK Parkway  
Suite #1  
Fort Collins, CO 80525  
Phone: 970.377.3602  
Fax: 970.377.3935  
www.jub.com



EXHIBIT - NOT FOR CONSTRUCTION

REUSE OF DRAWINGS  
THIS DOCUMENT AND THE IDEAS AND DESIGNS INCORPORATED HEREIN ARE THE PROPERTY OF JUB ENGINEERS, INC. AND IS NOT TO BE USED IN WHOLE OR PART FOR ANY OTHER PROJECT WITHOUT THE EXPRESS WRITTEN AUTHORIZATION OF JUB ENGINEERS, INC.

NO.	REVISION	DESCRIPTION	BY	DATE

QUIET ZONE PRELIMINARY DESIGN  
LONGMONT, CO

9TH AVENUE  
GROUP 1

FILE : 9THA EXHIBIT  
JUB PROJ. # : 87-19-002  
DRAWN BY: KK  
DESIGN BY: KK  
CHECKED BY: ALM  
AT FULL SIZE, IF NOT ONE INCH SCALE ACCORDINGLY  
LAST UPDATED: 9/24/2019

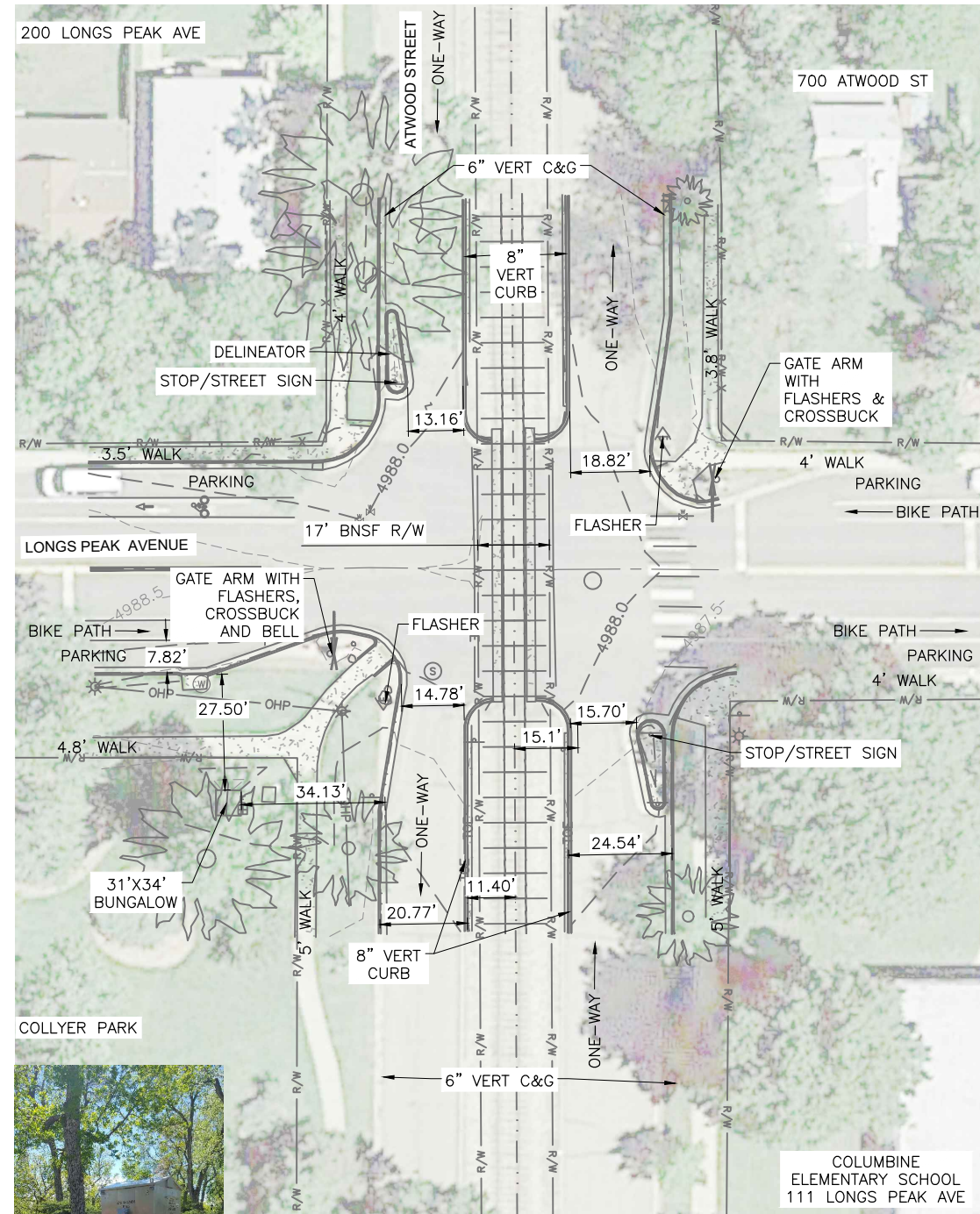
DRAWING NUMBER:  
**EX**

SHEET  
**5**

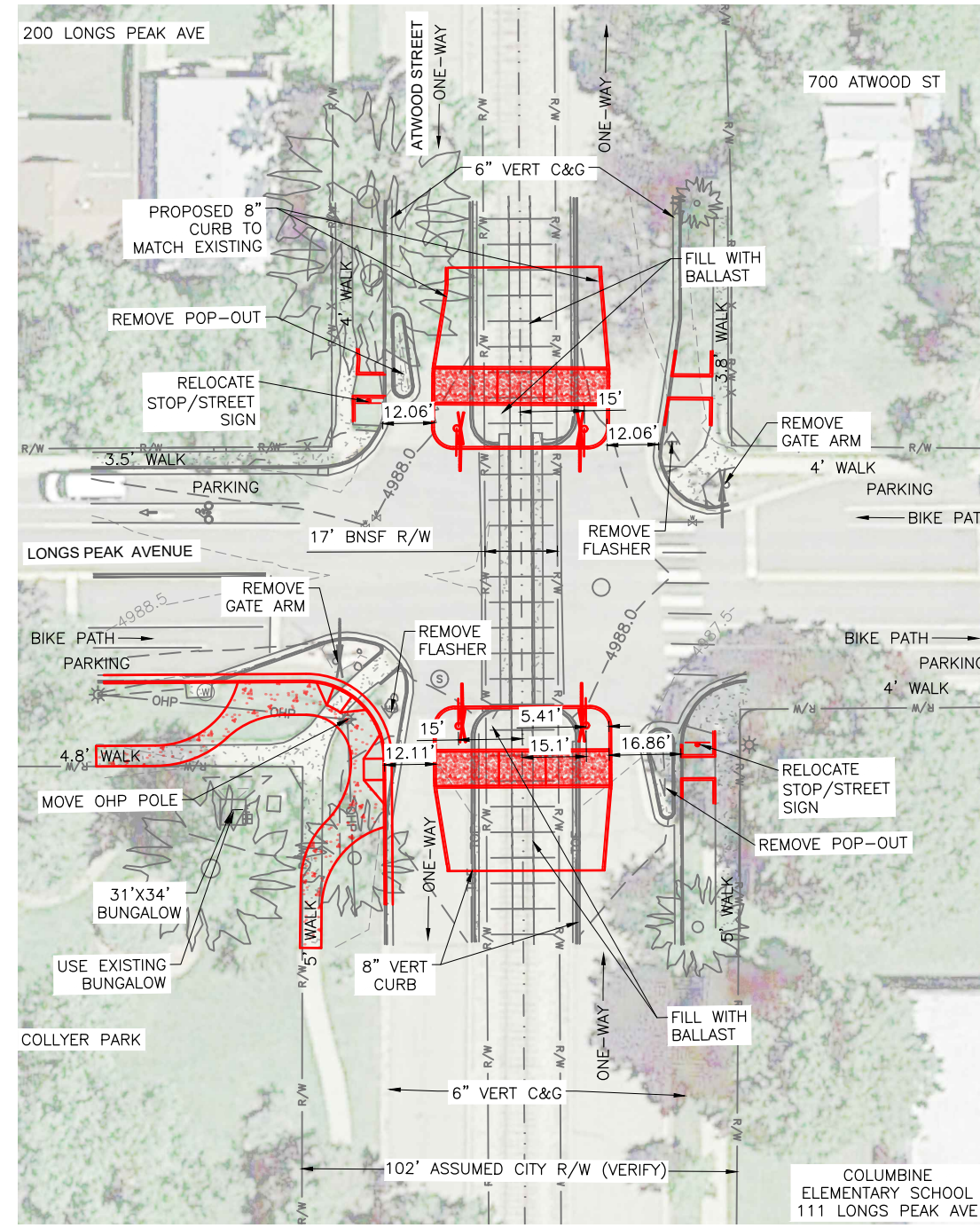




**EXISTING CONDITION**



**PROPOSED CONDITION**



**LONGS PEAK AVENUE & ATWOOD STREET**

- 2019.06.04 INVENTORY #245005M:
- 1994 AADT = 1,800 W/ 5% TRUCKS
  - CWT DETECTION
- PASSIVE:
- SIGNS
    - NO W10-1 (UPDATE INVENTORY)
    - NO CROSSBUCKS (UPDATE INVENTORY)
  - STRIPING/PAVING
    - STOP
    - RR XING SYMBOL
- ACTIVE:
- 2 GATE ARMS - SAFETRAN
  - 2 MAST MOUNTED FLASHERS
  - 1 BELLS
  - MINOR ARTERIAL - IS THIS CORRECT?

- LONGS PEAK AVE:
- LOCAL OR COLLECTOR
  - ASPHALT
    - 2 LANES, 2 NIKE LANES WITH PARKING
  - 25 MPH
  - RECENT INTERSECTION IMPROVEMENTS BY THE CITY
  - 2018 ADT = 1,300 (J-U-B)

- PROPOSED IMPROVEMENTS:
- 4 GATES
  - MODIFICATION OF PEDESTRIAN ISLANDS AND WALKWAYS
  - PEDESTRIAN PATH ACROSS TRACKS SIMILAR TO OTHER ATWOOD LOCATIONS TO THE SOUTH.
    - BALLAST - CLASS II (1" - 3/8")
  - REMOVE EXISTING GATE ARMS AND FLASHERS

CAN THIS BUNGALOW LOCATION BE USED FOR THE OTHER ATWOOD LOCATIONS TO THE SOUTH?

- DESIGN MINIMUM LANE WIDTH:
- 10' DRIVE
  - 7' PARKING
  - 5' BIKE

- ABBREVIATIONS:
- ADT - AVERAGE DAILY TRAFFIC
  - AADT - ANNUAL AVERAGE DAILY TRAFFIC
  - C&G - CURB AND GUTTER
  - OHP - OVERHEAD POWER LINE
  - R/W - RIGHT OF WAY
  - VERT - VERTICAL



J-U-B ENGINEERS, INC.  
 3538 JFK Parkway  
 Suite #1  
 Fort Collins, CO 80525  
 Phone: 970.377.3602  
 Fax: 970.377.3935  
 www.jub.com



EXHIBIT - NOT FOR CONSTRUCTION

REUSE OF DRAWINGS AND THE IDEAS AND DESIGNS INCORPORATED HEREIN ARE THE PROPERTY OF JUB ENGINEERS, INC. AND IS NOT TO BE USED IN WHOLE OR PART FOR ANY OTHER PROJECT WITHOUT THE EXPRESS WRITTEN AUTHORIZATION OF JUB ENGINEERS, INC.

NO.	REVISION	DESCRIPTION	BY	APPR.	DATE

QUIET ZONE PRELIMINARY DESIGN  
 LONGMONT, CO

LONGS PEAK AVENUE  
 GROUP 1

FILE : LONG EXHIBIT  
 JUB PROJ. # : 87-19-002  
 DRAWN BY: KK  
 DESIGN BY: KK  
 CHECKED BY: ALM  
 AT FULL SIZE, IF NOT ONE INCH, SCALE ACCORDINGLY  
 LAST UPDATED: 9/24/2019

DRAWING NUMBER:  
**EX**

SHEET  
**6**

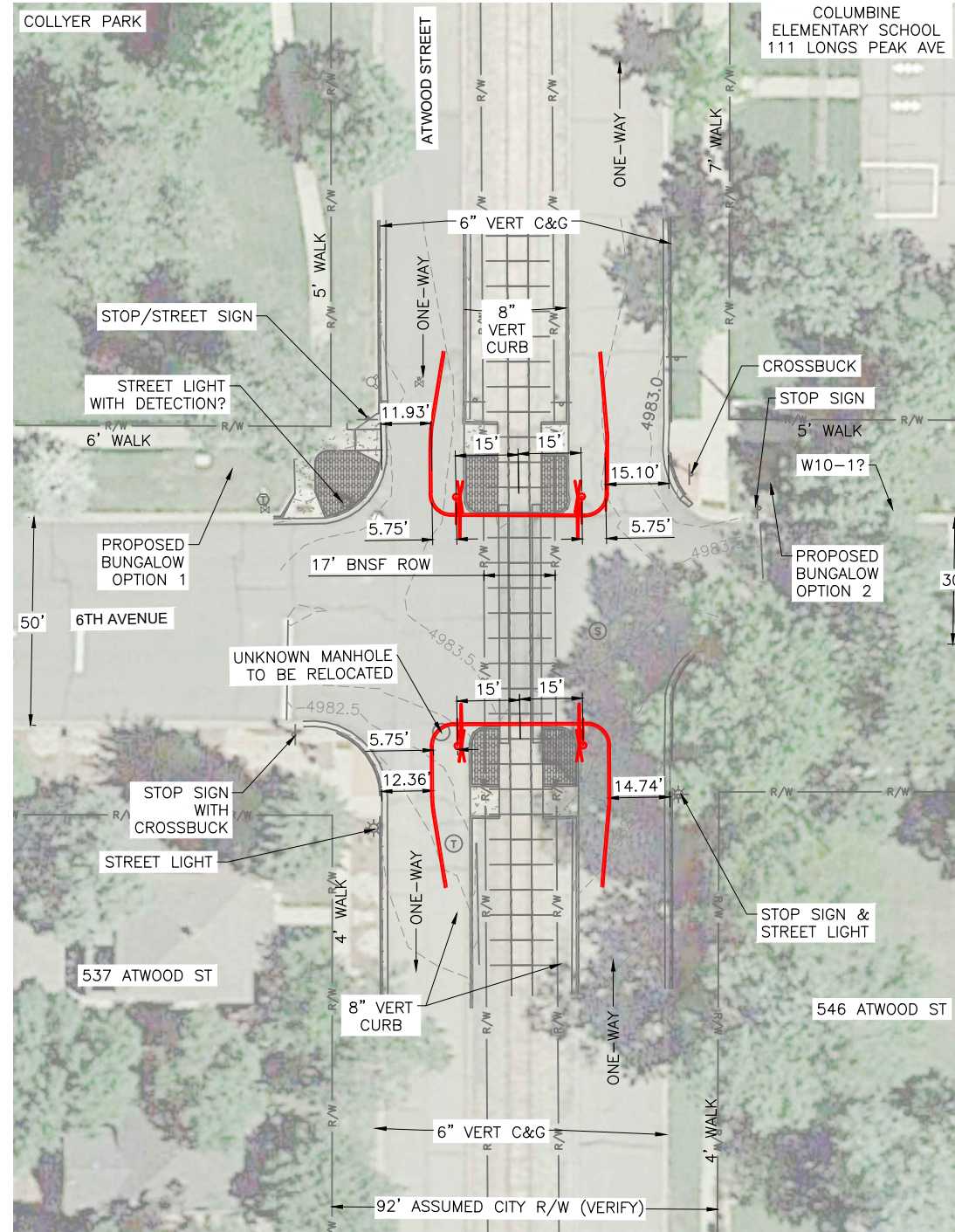
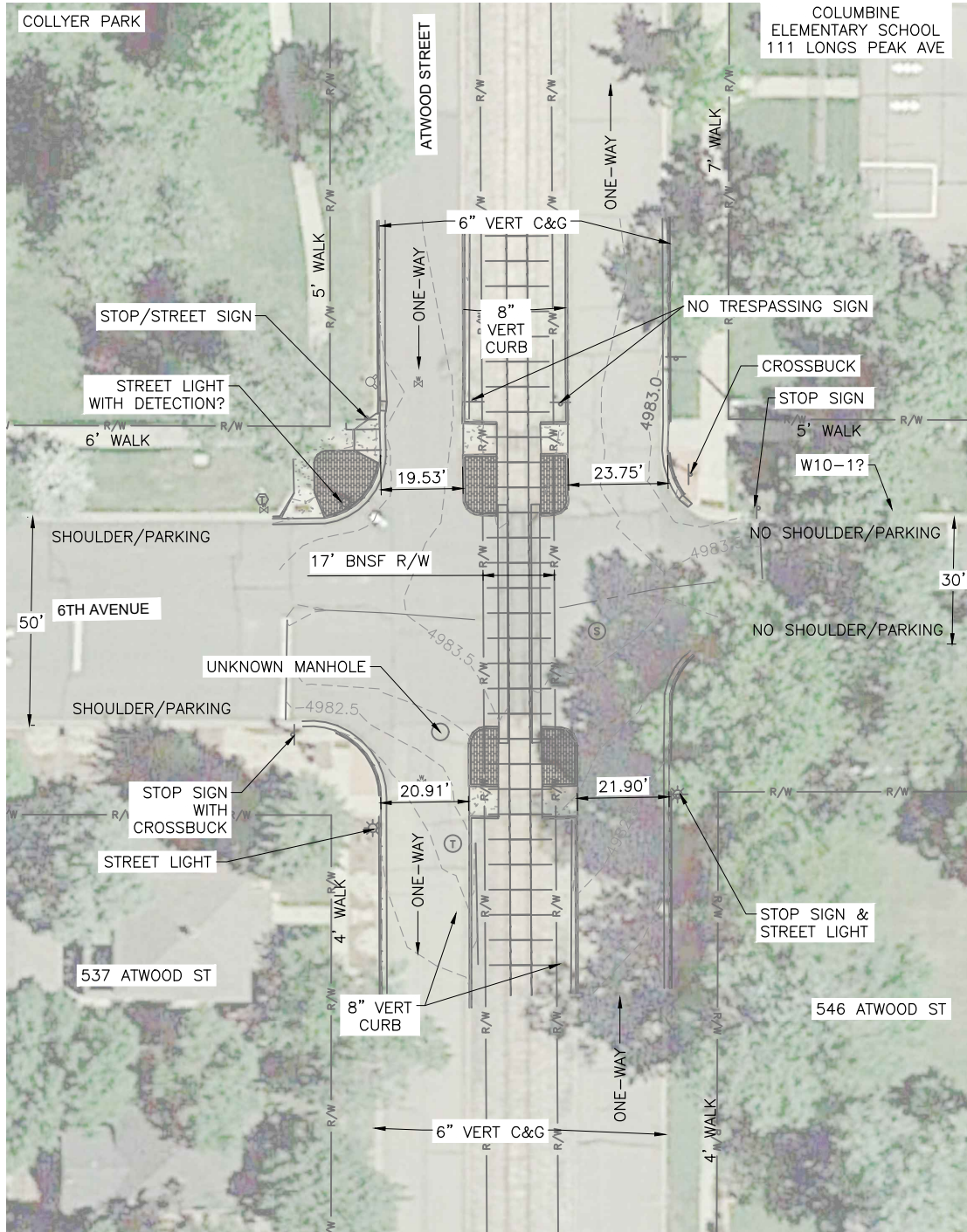




EXISTING CONDITION



PROPOSED CONDITION



6TH AVENUE & ATWOOD STREET

- 2019.06.04 INVENTORY #245004F:
- 1989 AADT = 1,000 W/ 9% TRUCKS
  - NO DETECTION
- PASSIVE:
- SIGNS
    - NO W10-1 (UPDATE INVENTORY)
    - 2 CROSSBUCKS
  - STRIPING/PAVING
    - NO STOP - VERIFY
    - YES ON 6TH; NOT ATWOOD
    - RR XING SYMBOL
- ACTIVE:
- NONE

- 6TH AVE:
- LOCAL
  - ASPHALT
    - WEST SIDE: 2 LANES WITH PARKING/SHOULDER
    - EAST SIDE: 2 LANES
  - 25 MPH
  - RECENT INTERSECTION IMPROVEMENTS BY THE CITY
  - 2018 ADT = 350 (J-U-B)

PROPOSED IMPROVEMENTS:

- 4 GATES
- MODIFICATION OF PEDESTRIAN ISLANDS AND WALKWAYS
- PEDESTRIAN PATH ACROSS TRACKS SIMILAR TO OTHER ATWOOD LOCATIONS TO THE SOUTH.
- BALLAST - CLASS II (1" - 3/8")
- NEW BUNGALOW OR USE EXISTING BUNGALOW AT LONGS PEAK?

DESIGN MINIMUM LANE WIDTH:

- 10' DRIVE
- 7' PARKING
- 5' BIKE

ABBREVIATIONS:

- ADT - AVERAGE DAILY TRAFFIC
- AADT - ANNUAL AVERAGE DAILY TRAFFIC
- C&G - CURB AND GUTTER
- OHP - OVERHEAD POWER LINE
- R/W - RIGHT OF WAY
- VERT - VERTICAL



J-U-B ENGINEERS, INC.  
 3538 JFK Parkway  
 Suite #1  
 Fort Collins, CO 80525  
 Phone: 970.377.3602  
 Fax: 970.377.3935  
 www.jub.com



EXHIBIT - NOT FOR CONSTRUCTION

REUSE OF DRAWINGS AND THE IDEAS AND DESIGNS INCORPORATED HEREIN ARE THE PROPERTY OF J-U-B ENGINEERS, INC. AND ARE NOT TO BE USED IN WHOLE OR PART FOR ANY OTHER PROJECT WITHOUT THE EXPRESS WRITTEN AUTHORIZATION OF J-U-B ENGINEERS, INC.

NO.	REVISION	DESCRIPTION	BY	DATE

QUIET ZONE PRELIMINARY DESIGN  
 LONGMONT, CO

6TH AVENUE  
 GROUP 1

FILE : 6THA EXHIBIT  
 JUB PROJ. # : 87-19-002  
 DRAWN BY: KK  
 DESIGN BY: KK  
 CHECKED BY: ALM  
 AT FULL SIZE, IF NOT ONE INCH, SCALE ACCORDINGLY  
 LAST UPDATED: 9/24/2019

DRAWING NUMBER:  
**EX**

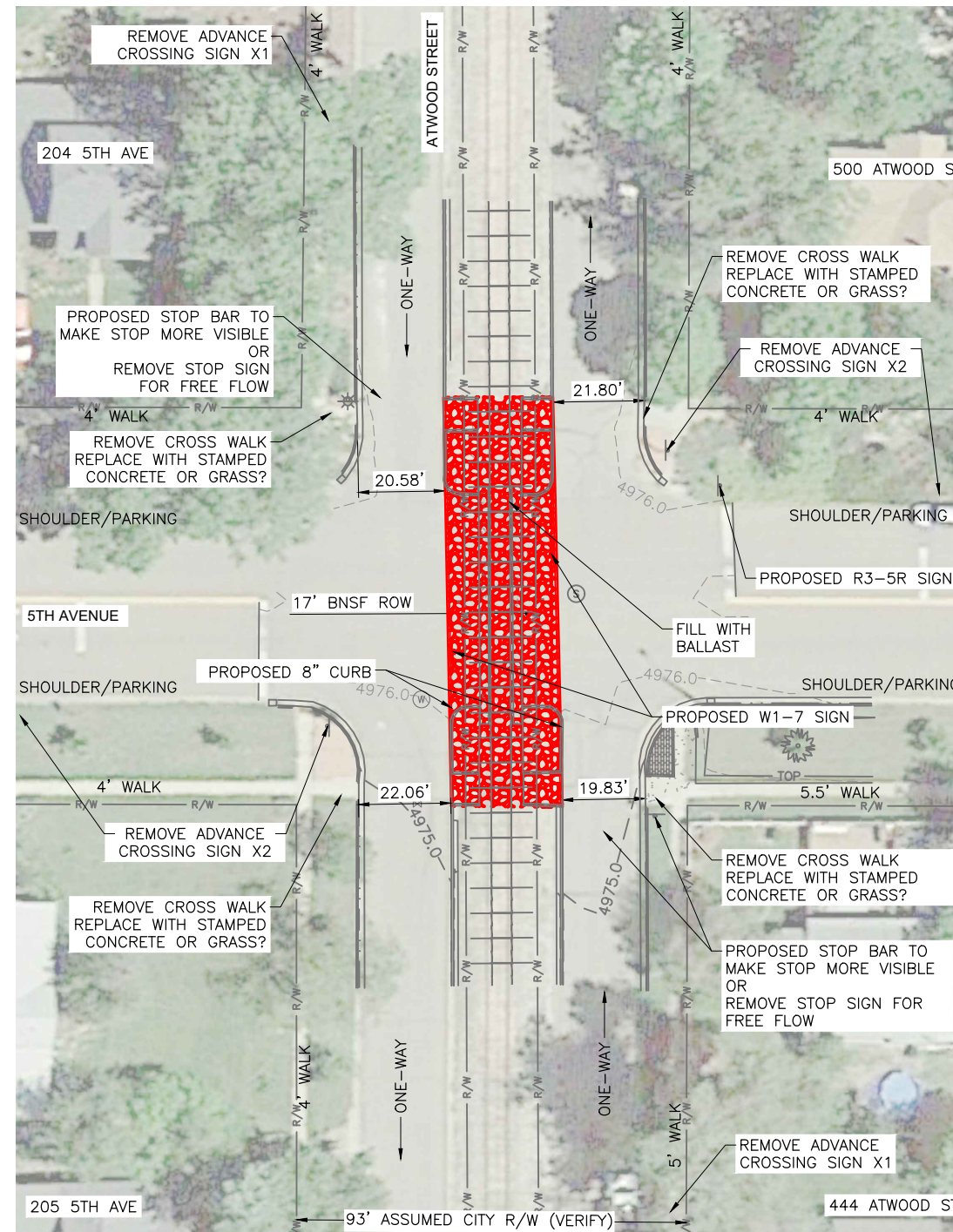
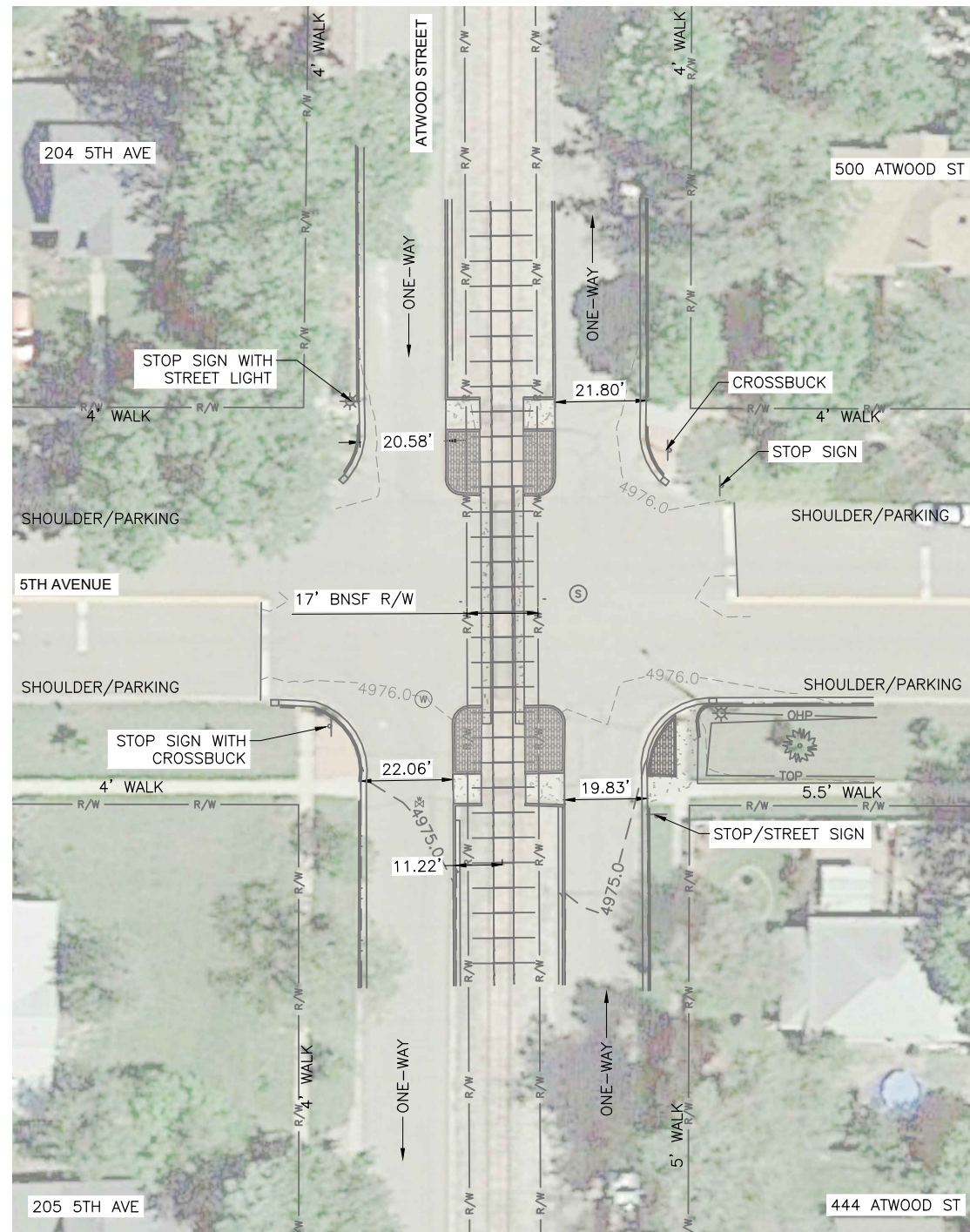
SHEET  
**7**





EXISTING CONDITION

PROPOSED CONDITION



5TH AVENUE & ATWOOD STREET

- 2019.06.04 INVENTORY #245003Y:
- 1989 AADT = 990 W/ 11% TRUCKS
  - NO DETECTION
- PASSIVE:
- SIGNS
    - NO W10-1 (UPDATE INVENTORY)
    - 2 CROSSBUCKS
  - STRIPING/PAVING
    - STOP
    - RR XING SYMBOL
- ACTIVE:
- NONE

- 5TH AVE:
- LOCAL
  - ASPHALT
  - 2 LANES WITH PARKING/SHOULDER
  - 25 MPH
  - RECENT INTERSECTION IMPROVEMENTS BY THE CITY
  - 2018 ADT = 500 (J-U-B)

- PROPOSED IMPROVEMENTS:
- ROAD CLOSURE
  - 8" C&G THROUGH ROADWAY CROSSING AND FILL WITH BALLAST SIMILAR TO OTHER LOCATIONS ALONG ATWOOD.
  - BALLAST - CLASS II (1" - 3/8")

- DESIGN MINIMUM LANE WIDTH:
- 10' DRIVE
  - 7' PARKING
  - 5' BIKE

- ABBREVIATIONS:
- ADT - AVERAGE DAILY TRAFFIC
  - AADT - ANNUAL AVERAGE DAILY TRAFFIC
  - C&G - CURB AND GUTTER
  - OHP - OVERHEAD POWER LINE
  - R/W - RIGHT OF WAY
  - VERT - VERTICAL



Know what's below.  
Call before you dig.



J-U-B ENGINEERS, INC.

J-U-B ENGINEERS, INC.  
3538 JFK Parkway  
Suite #1  
Fort Collins, CO 80525  
Phone: 970.377.3602  
Fax: 970.377.3935  
www.jub.com



EXHIBIT - NOT FOR CONSTRUCTION

REUSE OF DRAWINGS AND THE IDEAS AND DESIGNS INCORPORATED HEREIN ARE THE PROPERTY OF JUB ENGINEERS, INC. AND IS NOT TO BE USED IN WHOLE OR PART FOR ANY OTHER PROJECT WITHOUT THE EXPRESS WRITTEN AUTHORIZATION OF JUB ENGINEERS, INC.

NO.	REVISION	DESCRIPTION	BY	DATE

QUIET ZONE PRELIMINARY DESIGN  
LONGMONT, CO

5TH AVENUE  
GROUP 1

FILE : 5THA EXHIBIT  
JUB PROJ. # : 87-19-002  
DRAWN BY: KK  
DESIGN BY: KK  
CHECKED BY: ALM  
AT FULL SIZE, IF NOT ONE INCH SCALE ACCORDINGLY  
LAST UPDATED: 9/24/2019

DRAWING NUMBER:

EX

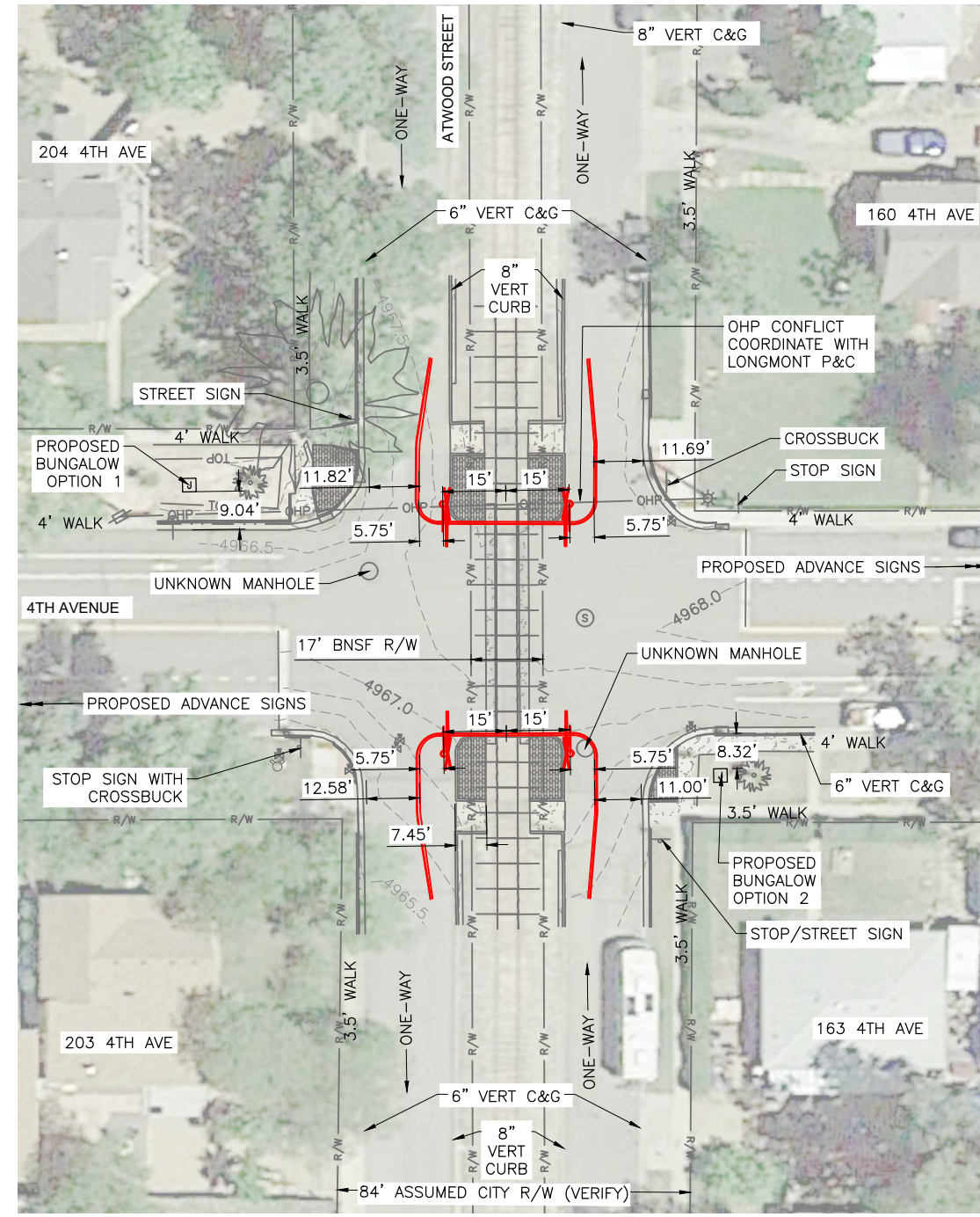
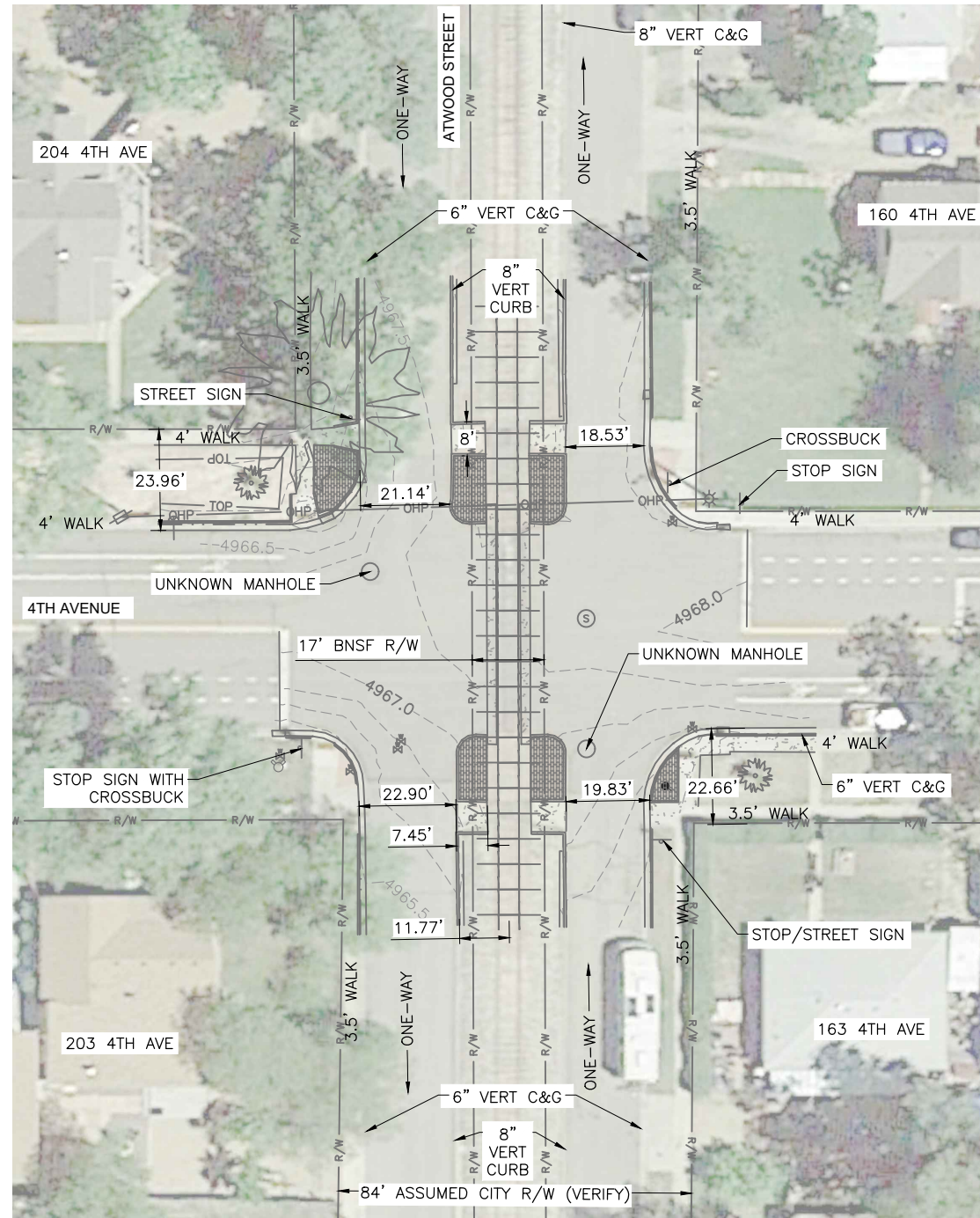
SHEET  
8





EXISTING CONDITION

PROPOSED CONDITION



4TH AVENUE & ATWOOD STREET

2019.06.04 INVENTORY #245002S:

- 1989 AADT = 700 W/ 8% TRUCKS
- NO DETECTION

PASSIVE:

- SIGNS
  - NO W10-1 (UPDATE INVENTORY)
  - NO CROSSBUCKS (UPDATE INVENTORY)
- STRIPING/PAVING
  - STOP
  - RR XING SYMBOL

ACTIVE:

- NONE

4TH AVE:

- LOCAL
- ASPHALT
  - 2 LANES, 2 BIKE LANES WITH PARKING
- 25 MPH
- RECENT INTERSECTION IMPROVEMENTS BY THE CITY
- 2018 ADT = 600 (J-U-B)

PROPOSED IMPROVEMENTS:

- 4 GATES
- MODIFICATION OF PEDESTRIAN ISLANDS AND WALKWAYS
- PEDESTRIAN PATH ACROSS TRACKS SIMILAR TO OTHER ATWOOD LOCATIONS TO THE NORTH.
- BALLAST - CLASS II (1" - 3/8")
- NEW BUNGALOW OR USE EXISTING BUNGALOW AT LONGS PEAK?
- UNDERGROUND OHP THROUGH INTERSECTION

DESIGN MINIMUM LANE WIDTH:

- 10' DRIVE
- 7' PARKING
- 5' BIKE

ABBREVIATIONS:

- ADT - AVERAGE DAILY TRAFFIC
- AADT - ANNUAL AVERAGE DAILY TRAFFIC
- C&G - CURB AND GUTTER
- OHP - OVERHEAD POWER LINE
- R/W - RIGHT OF WAY
- VERT - VERTICAL



Know what's below.  
Call before you dig.



J-U-B ENGINEERS, INC.

J-U-B ENGINEERS, INC.  
3538 JFK Parkway  
Suite #1  
Fort Collins, CO 80525  
Phone: 970.377.3602  
Fax: 970.377.3935  
www.jub.com



EXHIBIT - NOT FOR CONSTRUCTION

REUSE OF DRAWINGS  
THIS DOCUMENT AND THE IDEAS AND DESIGNS INCORPORATED HEREIN ARE THE PROPERTY OF JUB ENGINEERS, INC. AND ARE NOT TO BE REPRODUCED, COPIED, OR PART OF ANY OTHER PROJECT WITHOUT THE EXPRESS WRITTEN AUTHORIZATION OF JUB ENGINEERS, INC.

NO.	REVISION	DESCRIPTION	BY	DATE

QUIET ZONE PRELIMINARY DESIGN  
LONGMONT, CO

4TH AVENUE  
GROUP 1

FILE: 4THA EXHIBIT  
JUB PROJ. #: 87-19-002  
DRAWN BY: KK  
DESIGN BY: KK  
CHECKED BY: ALM  
AT FULL SIZE, IF NOT ONE INCH SCALE ACCORDINGLY  
LAST UPDATED: 9/24/2019

DRAWING NUMBER:

EX

SHEET  
9

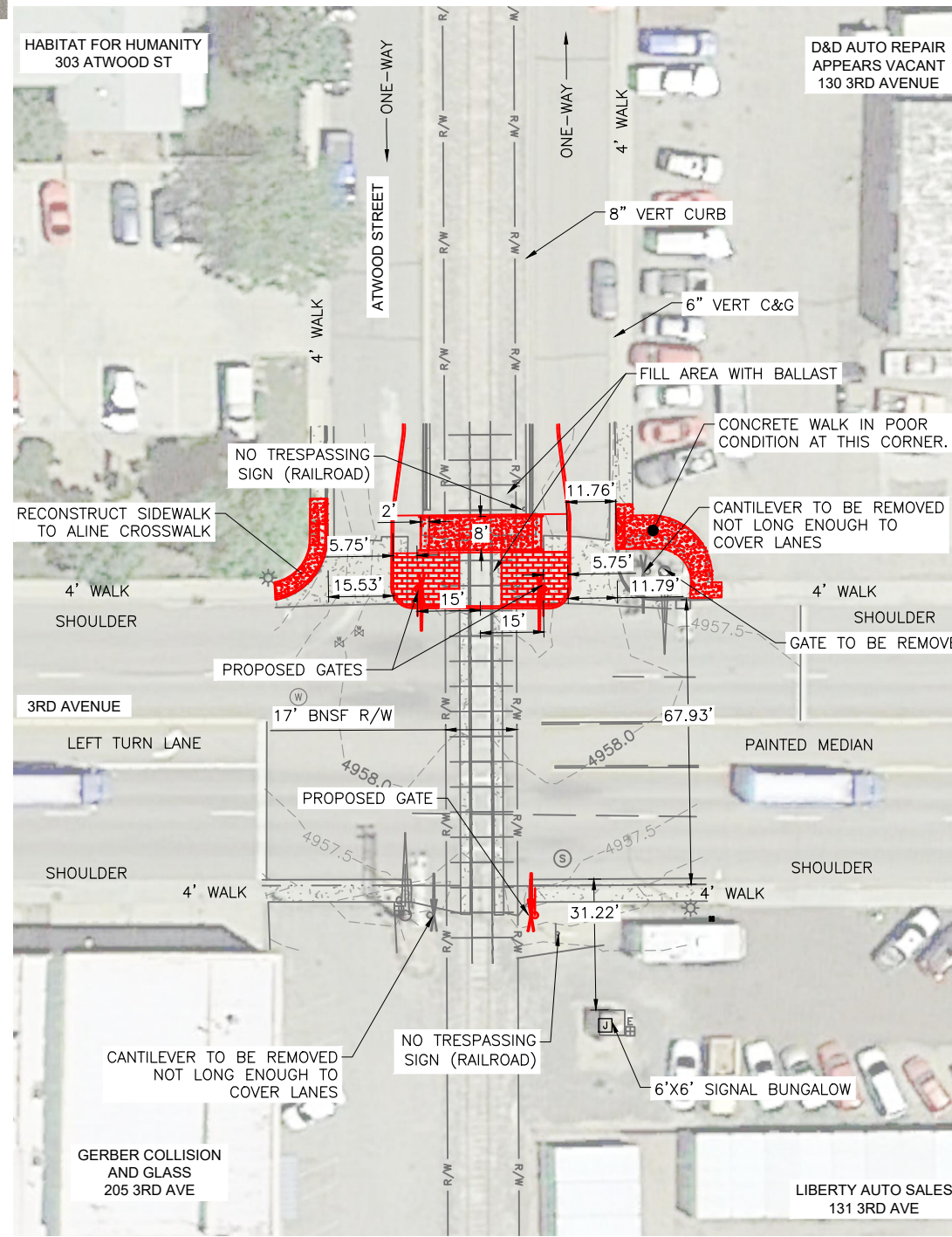
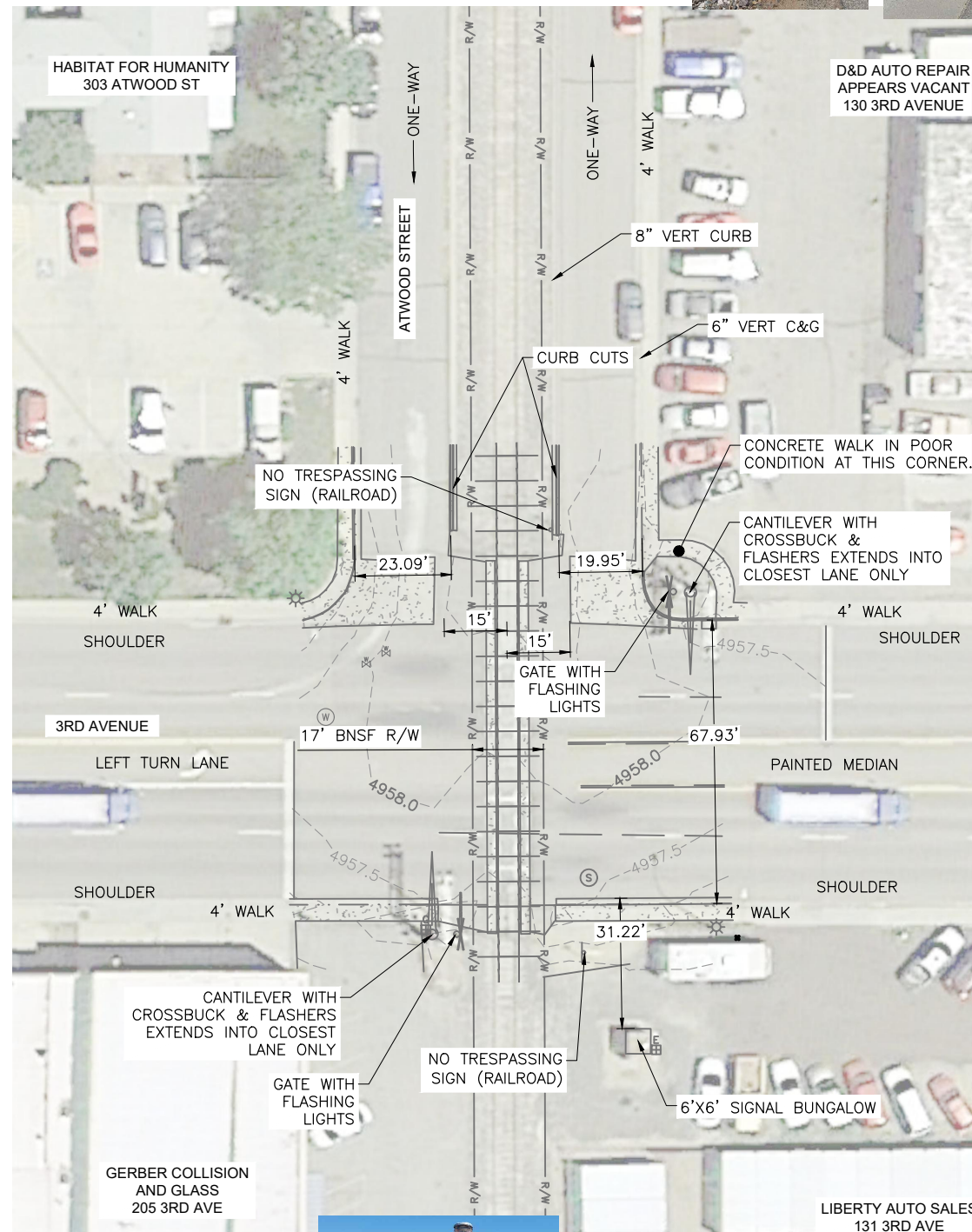




EXISTING CONDITION



PROPOSED CONDITION



3RD AVENUE & ATWOOD STREET

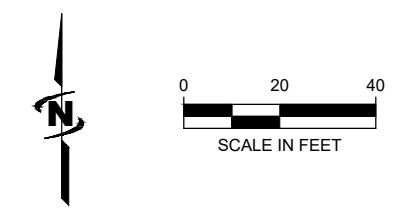


- 2019.06.04 INVENTORY #244848N:
- 1996 AADT = 19,600 W/ 6% TRUCKS
  - DC DETECTION
- PASSIVE:
- SIGNS
    - NO W10-1 (UPDATE INVENTORY)
    - NO CROSSBUCK (UPDATE INVENTORY)
  - STRIPING/PAVING
  - STOP
  - RR KING SYMBOL
- ACTIVE:
- 2 GATE ARMS - SAFETRAN
  - 2 CANTILEVERED FLASHING LIGHT STRUCTURES
  - 4 MAST MOUNTED FLASHERS
  - 1 BELLS
- 3RD AVE:
- ARTERIAL
  - ASPHALT
    - 4 THROUGH LANES, 1 CENTER LANE AND SHOULDERS
  - 35 MPH
  - 2018 ADT = 13,100 (J-U-B)

- PROPOSED IMPROVEMENTS:
- CWT CIRCUITRY
  - 3 GATES
  - REMOVE 1 GATE.
  - REMOVE OR REPLACE CANTILEVER ARMS TO CROSS ALL LANES?
  - REPLACE NE CORNER CONCRETE WALK.
  - PEDESTRIAN PATH ACROSS TRACKS SIMILAR TO OTHER ATWOOD LOCATIONS TO THE NORTH.
  - BALLAST - CLASS II (1" - 3/8")

- DESIGN MINIMUM LANE WIDTH:
- 10' DRIVE
  - 12' COMMERCIAL
  - 7' PARKING
  - 5' BIKE

- ABBREVIATIONS:
- ADT - AVERAGE DAILY TRAFFIC
  - AADT - ANNUAL AVERAGE DAILY TRAFFIC
  - C&G - CURB AND GUTTER
  - OHP - OVERHEAD POWER LINE
  - R/W - RIGHT OF WAY
  - VERT - VERTICAL



**JUB**  
J-U-B ENGINEERS, INC.  
3538 JFK Parkway  
Suite #1  
Fort Collins, CO 80525  
Phone: 970.377.3602  
Fax: 970.377.3935  
www.jub.com

EXHIBIT - NOT FOR CONSTRUCTION

NO.	REVISION	DESCRIPTION	BY	DATE

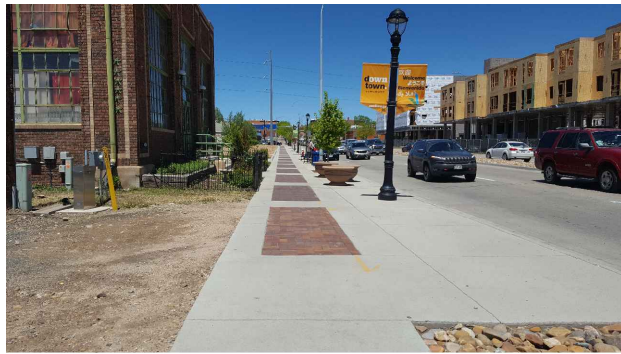
QUIET ZONE PRELIMINARY DESIGN  
LONGMONT, CO  
3RD AVENUE  
GROUP 1

FILE : 3RDA EXHIBIT  
JUB PROJ. # : 87-19-002  
DRAWN BY: KK  
DESIGN BY: KK  
CHECKED BY: ALM  
AT FULL SIZE, IF NOT ONE INCH SCALE ACCORDINGLY  
LAST UPDATED: 9/24/2019  
DRAWING NUMBER:  
**EX**  
SHEET  
10

Plot Date: 9/24/2019 9:54 AM Plotted By: Amber Moore  
Date Created: 10/2/2019 File Path: J:\JUB\LONGMONT\19-19-002 QUIET ZONES PRELIM DESIGN\3RDA EXHIBIT\3RDA EXHIBIT.DWG

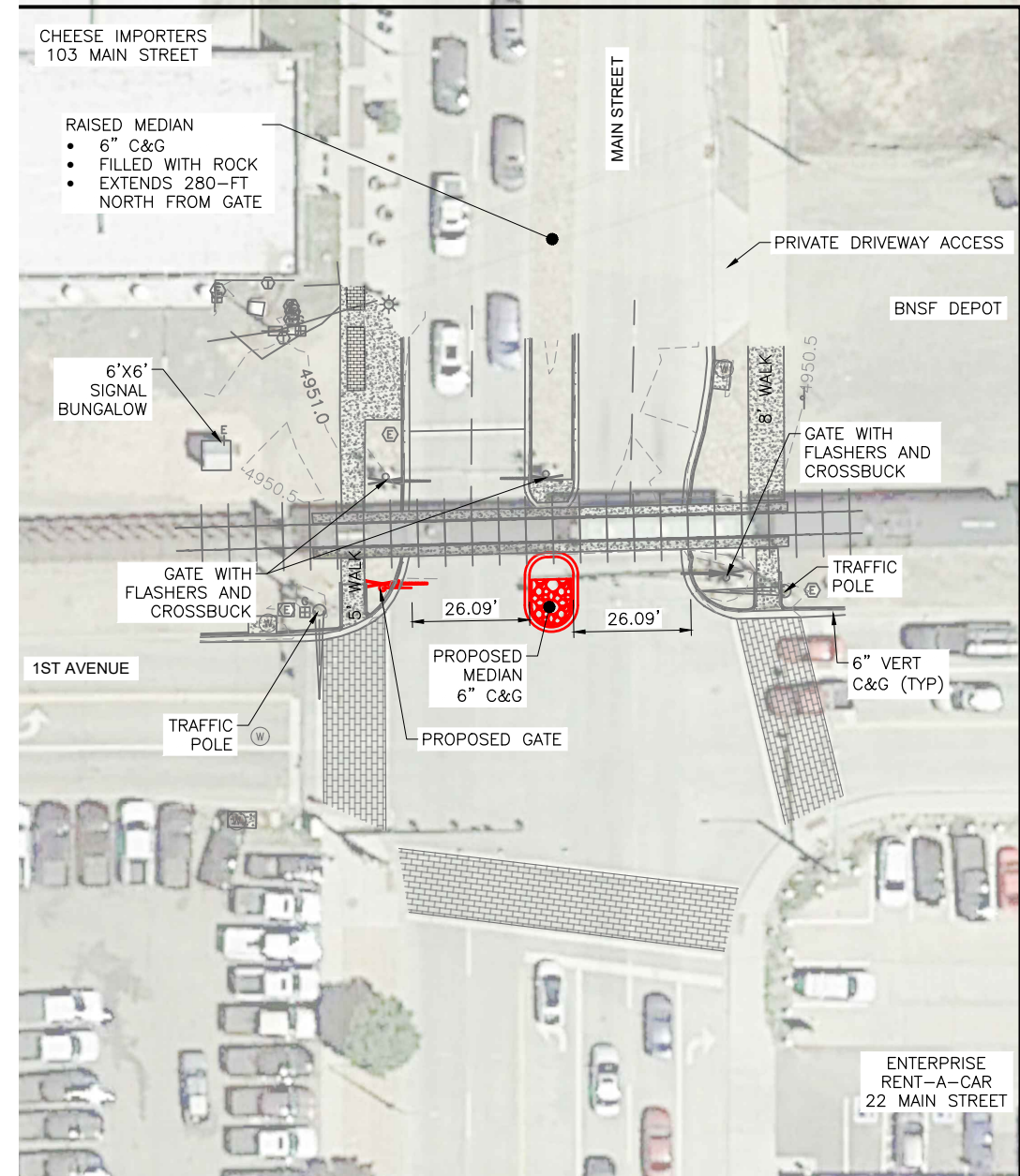
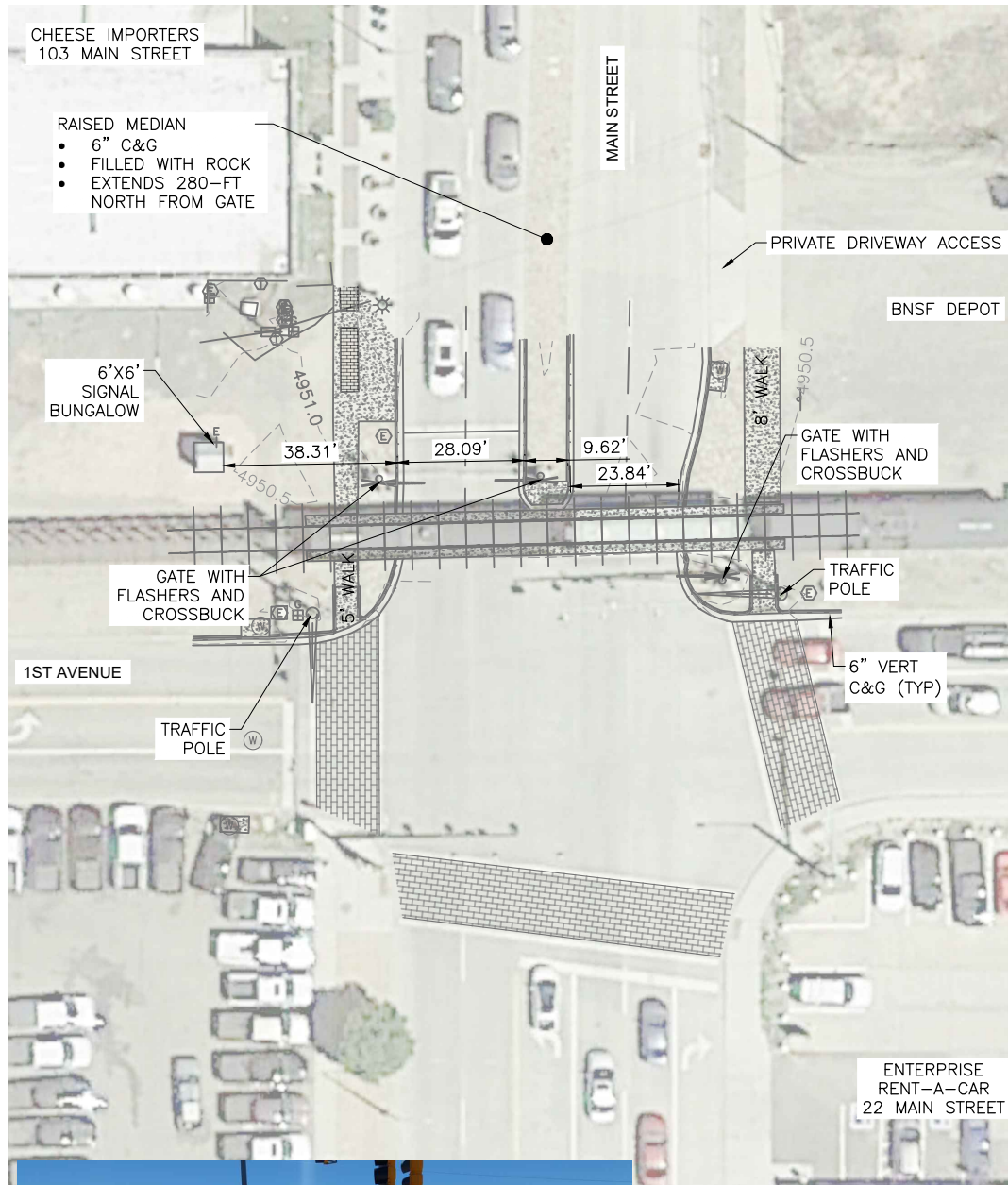






EXISTING CONDITION

PROPOSED CONDITION



MAIN STREET & 1ST AVENUE



- 2019.06.04 INVENTORY #244849V:
- 1996 AADT = 21,200 W/ 5% TRUCKS
  - CWT DETECTION
- PASSIVE:
- SIGNS
    - NO W10-1 (UPDATE INVENTORY)
    - NO CROSSBUCKS (UPDATE INVENTORY)
  - STRIPING/PAVING
    - STOP
    - RR XING SYMBOL
- ACTIVE:
- 2 GATE ARMS (UPDATE INVENTORY)
  - 2 MAST MOUNTED FLASHING LIGHTS
  - 1 BELLS

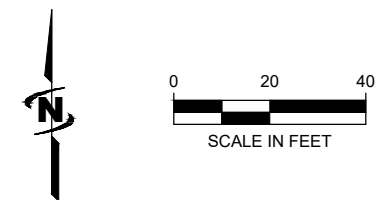
- MAIN STREET:
- ARTERIAL
  - CONCRETE
    - 4 LANES WITH RAISED MEDIAN
  - 35 MPH
  - ADT = 21,600 (CITY)

- PROPOSED IMPROVEMENTS:
- 1 GATE
  - MEDIAN
    - 6" C&G

CAN THIS BUNGLOW WITH CWT BE USED FOR THE COFFMAN CROSSING?

- DESIGN MINIMUM LANE WIDTH:
- 10' DRIVE
  - 12' COMMERCIAL
  - 7' PARKING
  - 5' BIKE

- ABBREVIATIONS:
- ADT - AVERAGE DAILY TRAFFIC
  - AADT - ANNUAL AVERAGE DAILY TRAFFIC
  - C&G - CURB AND GUTTER
  - OHP - OVERHEAD POWER LINE
  - R/W - RIGHT OF WAY
  - VERT - VERTICAL



J-U-B ENGINEERS, INC.  
 3538 JFK Parkway  
 Suite #1  
 Fort Collins, CO 80525  
 Phone: 970.377.3602  
 Fax: 970.377.3935  
 www.jub.com



EXHIBIT - NOT FOR CONSTRUCTION

REUSE OF DRAWINGS AND THE IDEAS AND DESIGNS INCORPORATED HEREIN ARE THE PROPERTY OF JUB ENGINEERS, INC. AND IS NOT TO BE USED IN WHOLE OR PART FOR ANY OTHER PROJECT WITHOUT THE EXPRESS WRITTEN AUTHORIZATION OF JUB ENGINEERS, INC.

NO.	REVISION	DESCRIPTION	BY	DATE

QUIET ZONE PRELIMINARY DESIGN  
 LONGMONT, CO

MAIN STREET

FILE: MAIN EXHIBIT  
 JUB PROJ. #: 87-19-002  
 DRAWN BY: KK  
 DESIGN BY: KK  
 CHECKED BY: ALM  
 AT FULL SIZE, IF NOT ONE INCH SCALE ACCORDINGLY  
 LAST UPDATED: 9/24/2019

DRAWING NUMBER:  
**EX**

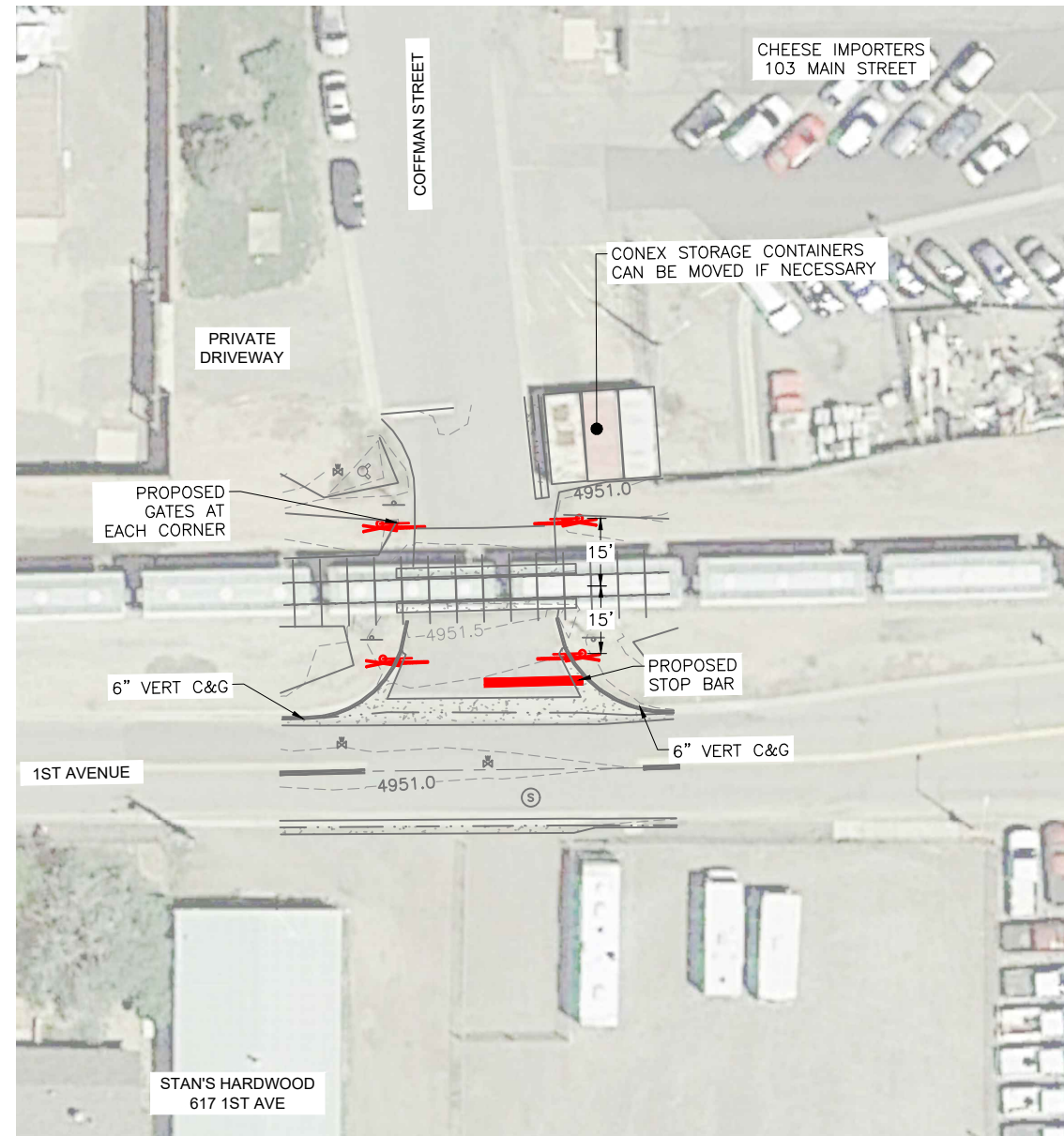
SHEET  
**11**



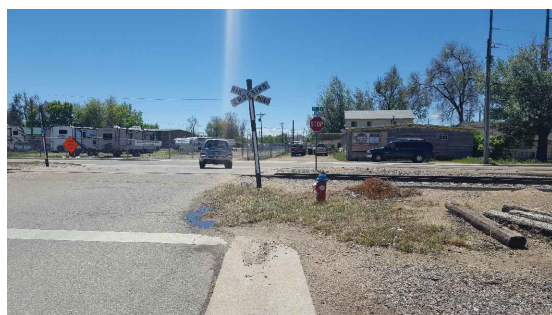
**EXISTING CONDITION**



**PROPOSED CONDITION**



**COFFMAN STREET & 1ST AVENUE**



2019.06.04 INVENTORY #244847G:

- 1989 AADT = 300 W/ 0% TRUCKS
- NO DETECTION

PASSIVE:

- SIGNS
  - NO W10-1 (UPDATE INVENTORY)
  - 2 CROSSBUCKS
- STRIPING/PAVING
  - STOP
  - RR XING SYMBOL

ACTIVE:

- NONE

COFFMAN ST.:

- LOCAL
- ASPHALT
  - 2 LANES WITH PARKING/SHOULDER
- NOT POSTED (25) MPH

PROPOSED IMPROVEMENTS:

- 4 GATES
- CWT AND BUNGALOW
  - CAN THE MAIN STREET BUNGALOW SERVICE THIS CROSSING?

DESIGN MINIMUM LANE WIDTH:

- 10' DRIVE
- 7' PARKING
- 5' BIKE

ABBREVIATIONS:

- ADT - AVERAGE DAILY TRAFFIC
- AADT - ANNUAL AVERAGE DAILY TRAFFIC
- C&G - CURB AND GUTTER
- OHP - OVERHEAD POWER LINE
- R/W - RIGHT OF WAY
- VERT - VERTICAL



Know what's below.  
Call before you dig.



J-U-B ENGINEERS, INC.

J-U-B ENGINEERS, INC.  
3538 JFK Parkway  
Suite #1  
Fort Collins, CO 80525  
Phone: 970.377.3602  
Fax: 970.377.3935  
www.jub.com



EXHIBIT - NOT FOR CONSTRUCTION

REUSE OF DRAWINGS  
THIS DOCUMENT AND THE IDEAS AND DESIGNS INCORPORATED HEREIN ARE THE PROPERTY OF J-U-B ENGINEERS, INC. AND IS NOT TO BE USED IN WHOLE OR PART FOR ANY OTHER PROJECT WITHOUT THE EXPRESS WRITTEN AUTHORIZATION OF J-U-B ENGINEERS, INC.

NO.	REVISION	DESCRIPTION	BY	DATE

QUIET ZONE PRELIMINARY DESIGN  
LONGMONT, CO

COFFMAN STREET

FILE : COFF EXHIBIT  
JUB PROJ. # : 87-19-002  
DRAWN BY: KK  
DESIGN BY: KK  
CHECKED BY: ALM  
ONE INCH  
AT FULL SIZE, IF NOT ONE  
INCH, SCALE ACCORDINGLY  
LAST UPDATED: 9/24/2019

DRAWING NUMBER:  
**EX**

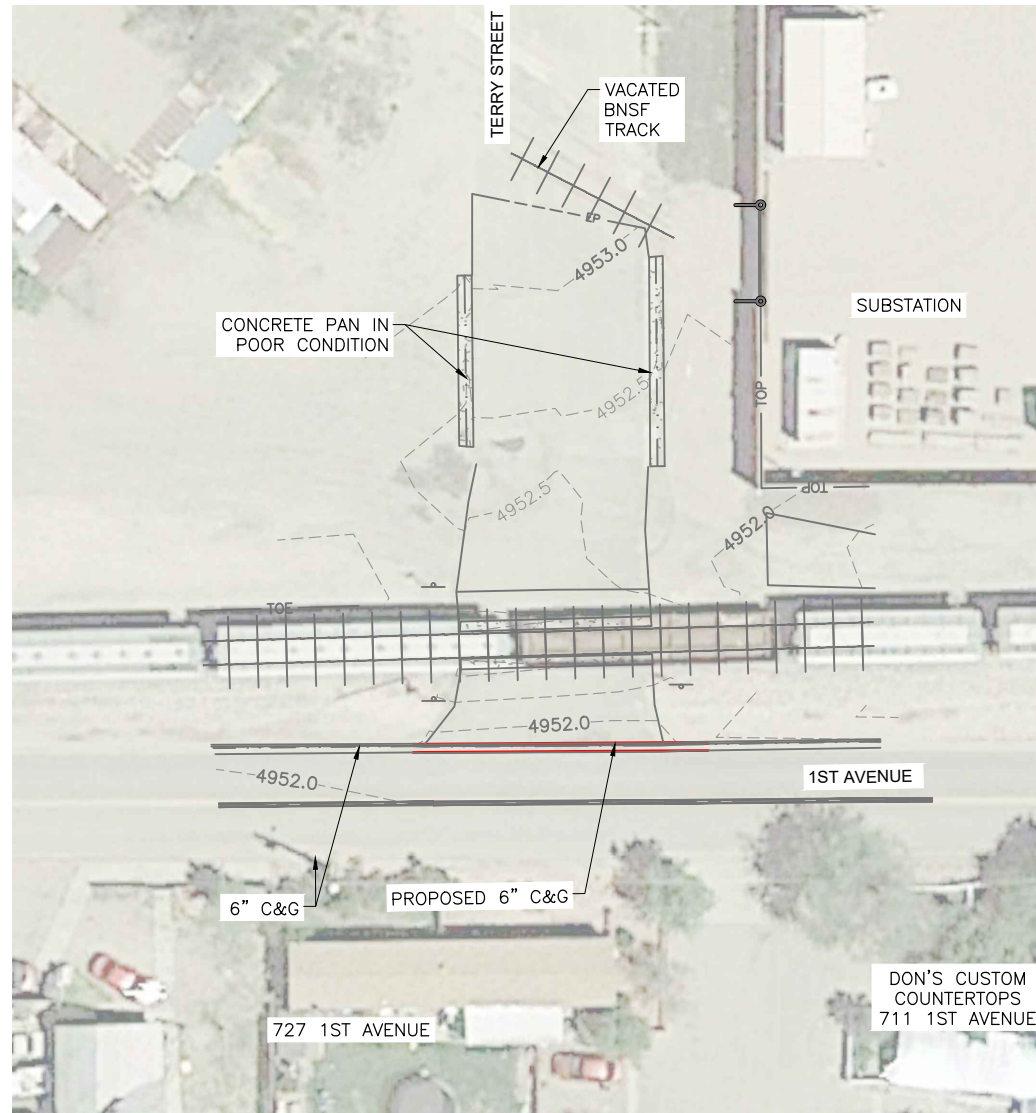
SHEET  
**12**



Plot Date: 2/24/2019 9:55 AM Plotted By: Amber Moore  
 Date Created: 2/20/19 File Path: F:\PROJECTS\JUL\LONGMONT\19-002 QUIET ZONES PRELIM DESIGN\CAD\EXHIBIT\TERR EXHIBIT.DWG



**PROPOSED CONDITION**



**TERRY STREET & 1ST AVENUE**



- 2019.06.04 INVENTORY #244846A:
- 1989 AADT = 500 W/ 0% TRUCKS
  - NO DETECTION
- PASSIVE:
- SIGNS
    - NO W10-1 (UPDATE INVENTORY)
    - 2 CROSSBUCKS
  - STRIPING/PAVING
    - NONE
- ACTIVE:
- NONE

- TERRY STREET:**
- LOCAL CUL-DE-SAC
  - ASPHALT
    - 2 LANES WITH PARKING/SHOULDER
  - 25 MPH
  - VACATED LOTS

- PROPOSED IMPROVEMENTS:**
- CLOSURE
    - 6" C&G

- DESIGN MINIMUM LANE WIDTH:**
- 10' DRIVE
  - 7' PARKING
  - 5' BIKE

- ABBREVIATIONS:**
- ADT - AVERAGE DAILY TRAFFIC
  - AADT - ANNUAL AVERAGE DAILY TRAFFIC
  - C&G - CURB AND GUTTER
  - OHP - OVERHEAD POWER LINE
  - R/W - RIGHT OF WAY
  - VERT - VERTICAL



J-U-B ENGINEERS, INC.

J-U-B ENGINEERS, INC.  
 3538 JFK Parkway  
 Suite #1  
 Fort Collins, CO 80525  
 Phone: 970.377.3602  
 Fax: 970.377.3935  
 www.jub.com



EXHIBIT - NOT FOR CONSTRUCTION

REUSE OF DRAWINGS  
 THIS DOCUMENT AND THE IDEAS AND DESIGNS INCORPORATED HEREIN ARE THE PROPERTY OF JUB ENGINEERS, INC. AND IS NOT TO BE USED IN WHOLE OR PART FOR ANY OTHER PROJECT WITHOUT THE EXPRESS WRITTEN AUTHORIZATION OF JUB ENGINEERS, INC.

NO.	REVISION	DESCRIPTION	BY	DATE

QUIET ZONE PRELIMINARY DESIGN  
 LONGMONT, CO

TERRY STREET

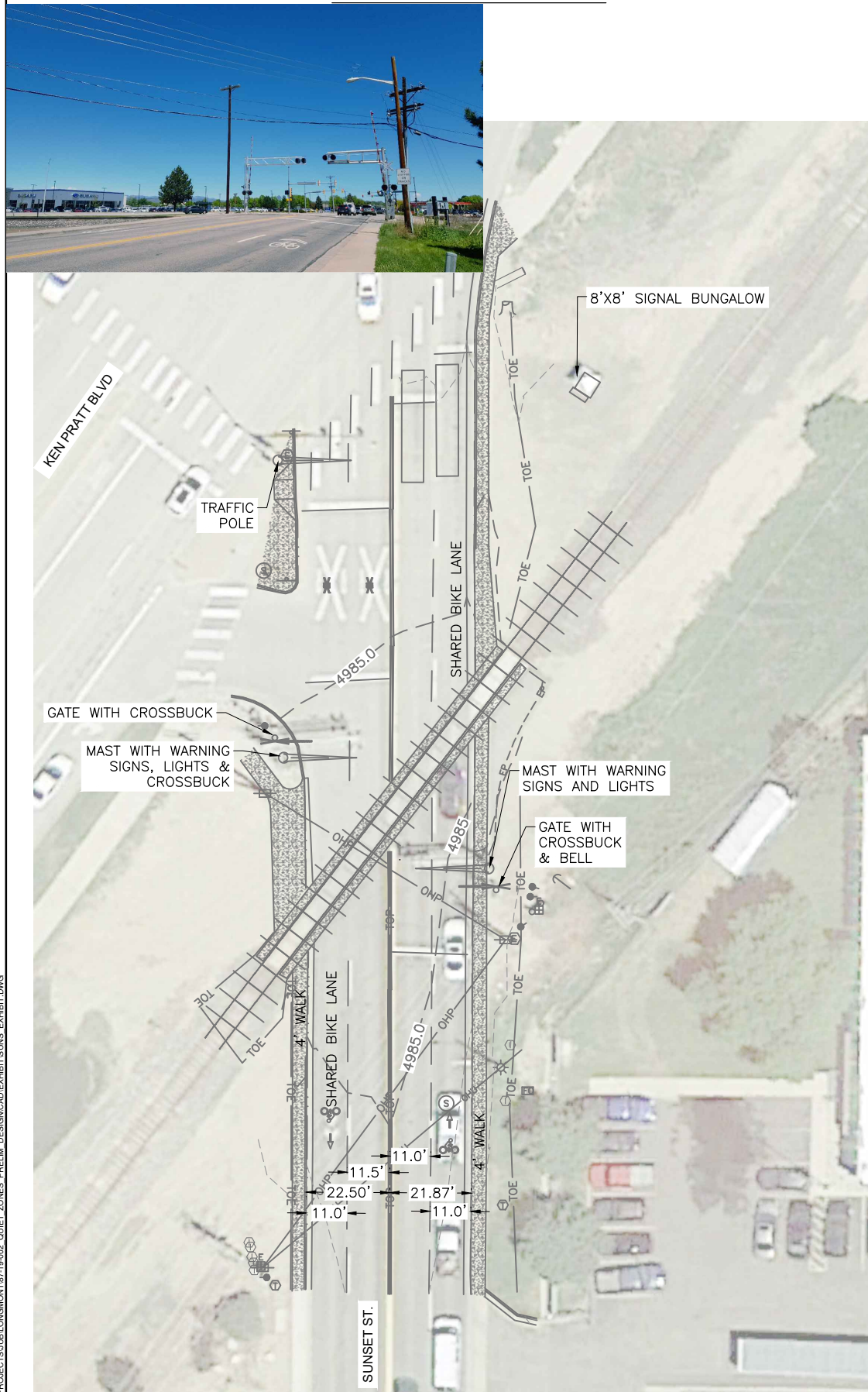
FILE : TERR EXHIBIT  
 JUB PROJ. # : 87-19-002  
 DRAWN BY: KK  
 DESIGN BY: KK  
 CHECKED BY: ALM  
 ONE INCH  
 AT FULL SIZE, IF NOT ONE  
 INCH, SCALE ACCORDINGLY  
 LAST UPDATED: 9/24/2019

DRAWING NUMBER:  
**EX**

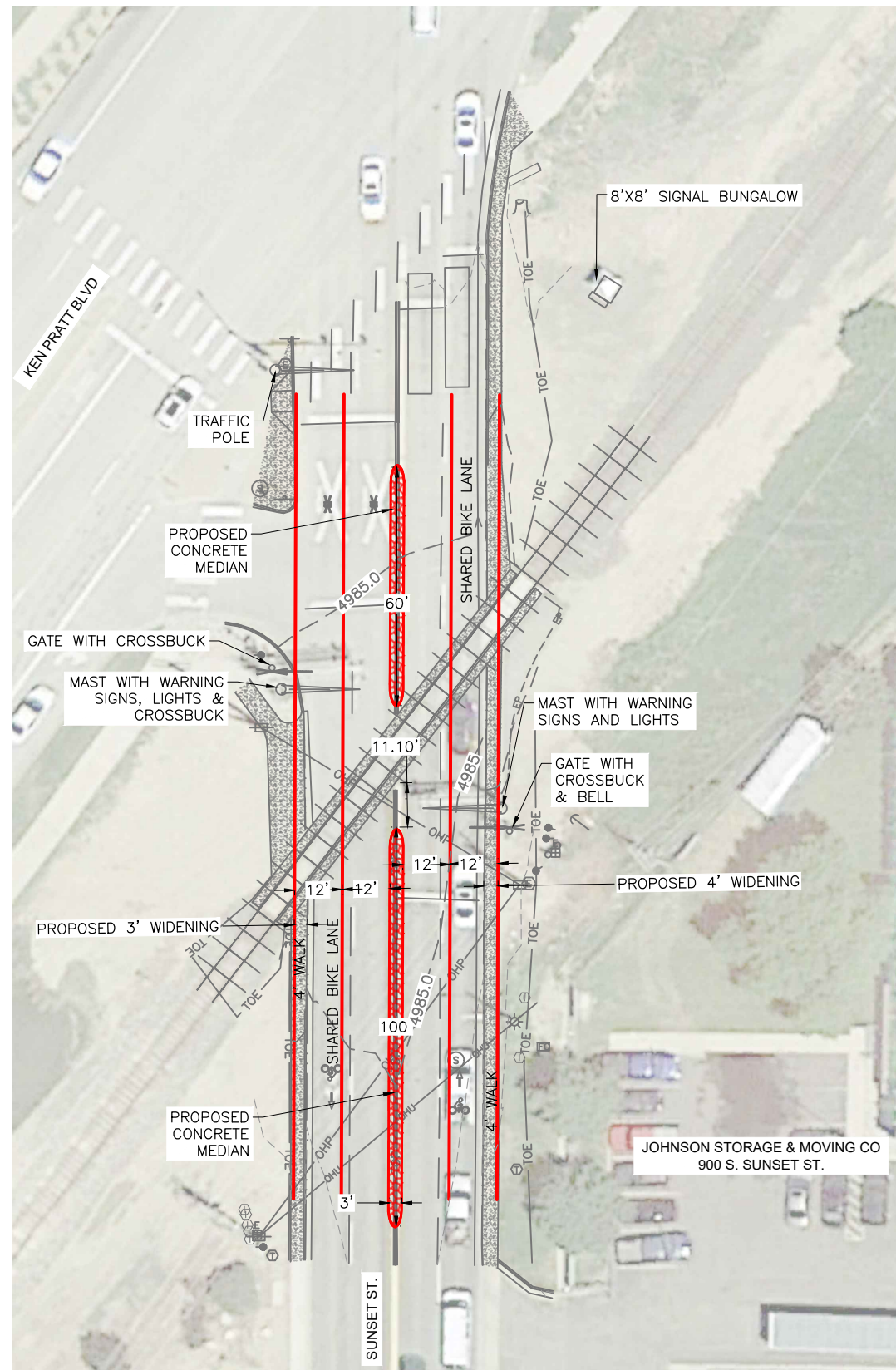
SHEET  
**13**



**EXISTING CONDITION**



**PROPOSED CONDITION**



**SUNSET AVENUE & KEN PRATT BOULEVARD**

2019.07.26 INVENTORY #244844L:

- 1994 AADT = 5,500 W/ 5% TRUCKS
- CWT DETECTION

PASSIVE:

- SIGNS
  - NO W10-1 (UPDATE INVENTORY)
  - NO CROSSBUCKS (UPDATE INVENTORY)
- STRIPING/PAVING
  - STOP
  - RR XING SYMBOL

ACTIVE:

- 2 GATE ARMS - SAFETRAN
- 2 CANTILEVERED FLASHING LIGHT STRUCTURES
- 4 MAST MOUNTED FLASHING LIGHTS
- 1 BELLS

SUNSET STREET:

- MAJOR COLLECTOR
- ASPHALT
  - 4 LANES
  - SHARED BIKE AND DRIVE LANE
- 35 MPH
- ADT = 8,200 (CITY)

PROPOSED IMPROVEMENTS:

- RAISED MEDIAN
  - 6" C&G
- REMOVE & REPLACE C&G AND WALKS TO ACCOMMODATE WIDTH - 7'
  - R/W ACQUISITION?

SEE LONGMONT CONCEPT IMPROVEMENTS NEXT SHEET - DATED 2014.

DESIGN MINIMUM LANE WIDTH:

- 10' DRIVE
- 12' COMMERCIAL
- 7' PARKING
- 5' BIKE

ABBREVIATIONS:

- ADT - AVERAGE DAILY TRAFFIC
- AADT - ANNUAL AVERAGE DAILY TRAFFIC
- C&G - CURB AND GUTTER
- OHP - OVERHEAD POWER LINE
- R/W - RIGHT OF WAY
- VERT - VERTICAL



Know what's below.  
Call before you dig.



J-U-B ENGINEERS, INC.

J-U-B ENGINEERS, INC.  
3538 JFK Parkway  
Suite #1  
Fort Collins, CO 80525  
Phone: 970.377.3602  
Fax: 970.377.3935  
www.jub.com



EXHIBIT - NOT FOR CONSTRUCTION

REUSE OF DRAWINGS INCORPORATED  
THIS DOCUMENT AND THE IDEAS AND DESIGNS INCORPORATED HEREIN ARE THE PROPERTY OF JUB ENGINEERS, INC. AND IS NOT TO BE USED IN WHOLE OR PART FOR ANY OTHER PROJECT WITHOUT THE EXPRESS WRITTEN AUTHORIZATION OF JUB ENGINEERS, INC.

NO.	REVISION	DESCRIPTION	BY	DATE

QUIET ZONE PRELIMINARY DESIGN  
LONGMONT, CO

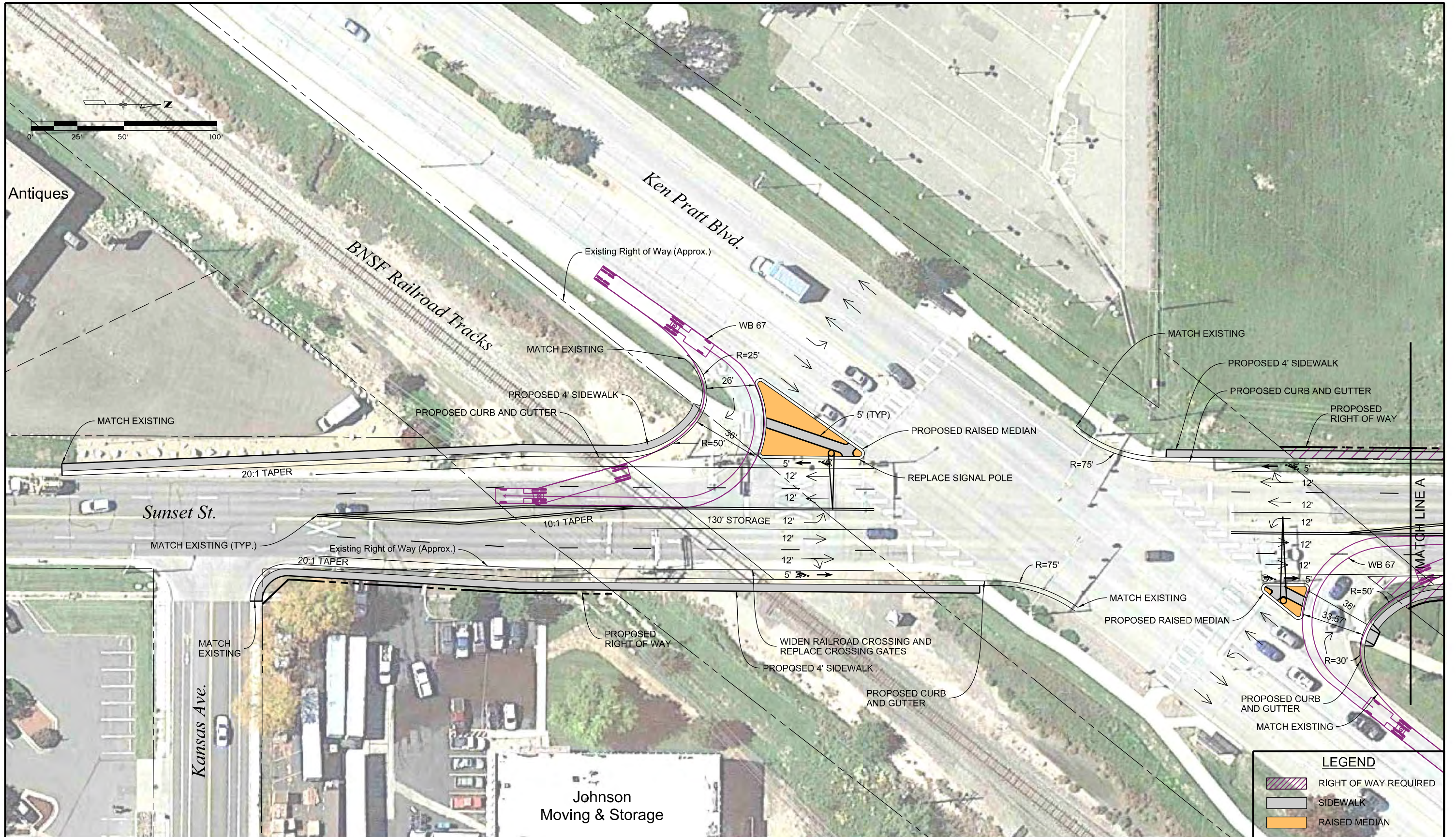
SUNSET STREET

FILE : SUNS EXHIBIT  
JUB PROJ. # : 87-19-002  
DRAWN BY: KK  
DESIGN BY: KK  
CHECKED BY: ALM  
AT FULL SIZE, IF NOT ONE INCH, SCALE ACCORDINGLY  
LAST UPDATED: 9/24/2019

DRAWING NUMBER:  
**EX**

SHEET  
**14**





copy: 2:53:54 PM P:\13-022.01 Longmont Roadway Improvement Plan\CAD\13022 Ken Pratt and Sunset01.dgn  
 CDOT-Design\Finaler\_V81.tbl  
 4/3/2014

Print Date: 4/3/2014

File Name: 13022 Ken Pratt and Sunset01.dgn

Scale: 1:50

**MULLER ENGINEERING CO., INC.** 777 S. Wadsworth Blvd.  
 CONSULTING ENGINEERS #4 - 100  
 Lakewood, CO 80226  
 303-988-4939

Sheet Revisions		
Date:	Comments	Init.

PREPARED FOR:  
 CITY OF LONGMONT  
 385 KIMBARK STREET  
 LONGMONT, COLORADO 80501  
 (303) 651-8323  
 CONTACT: Bob Ball



As Constructed
No Revisions:
Revised:
Void:

KEN PRATT BLVD. & SUNSET ST. INTERSECTION			
Designer:	SNG	Structure Numbers	
Detailer:	CLJ		
Sheet Subset:	PLAN	Subset Sheets:	1 OF 2

Project No /Code	EX
DRAWING NUMBER:	
SHEET	15
Sheet No	