



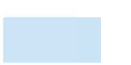


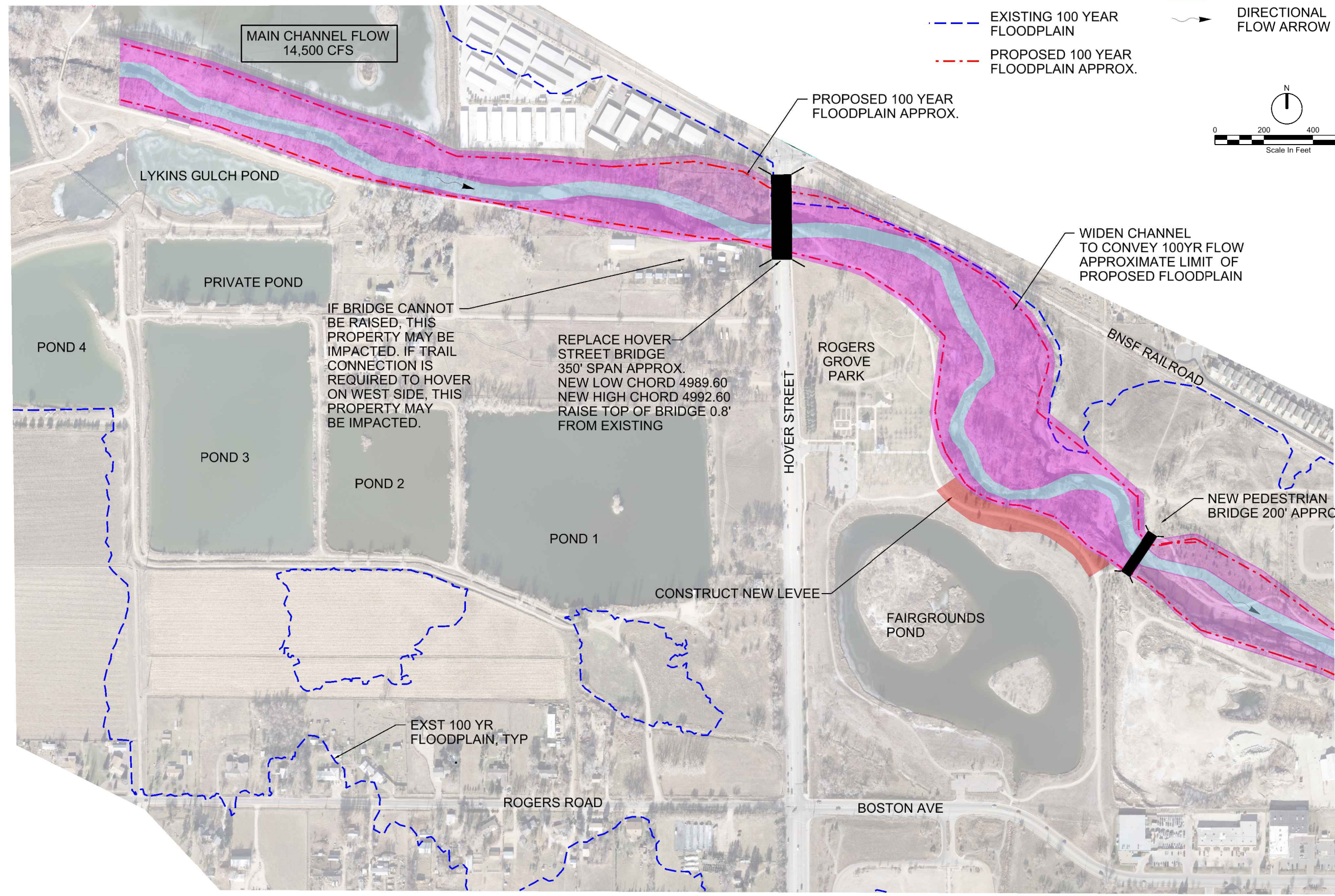
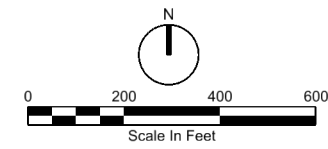


Attachment A
2015 Alternatives Analysis Figures

LEGEND

-  BRIDGE/CULVERT
-  FILL AREA
-  EXISTING 100 YEAR FLOODPLAIN
-  PROPOSED 100 YEAR FLOODPLAIN APPROX.
-  SAINT VRAIN LOW FLOW CHANNEL
-  PROPOSED SAINT VRAIN CHANNEL
-  DIRECTIONAL FLOW ARROW



MAIN CHANNEL FLOW
14,500 CFS

PROPOSED 100 YEAR
FLOODPLAIN APPROX.

WIDEN CHANNEL
TO CONVEY 100YR FLOW
APPROXIMATE LIMIT OF
PROPOSED FLOODPLAIN


IF BRIDGE CANNOT
BE RAISED, THIS
PROPERTY MAY BE
IMPACTED. IF TRAIL
CONNECTION IS
REQUIRED TO HOVER
ON WEST SIDE, THIS
PROPERTY MAY
BE IMPACTED.

REPLACE HOVER
STREET BRIDGE
350' SPAN APPROX.
NEW LOW CHORD 4989.60
NEW HIGH CHORD 4992.60
RAISE TOP OF BRIDGE 0.8'
FROM EXISTING







NEW PEDESTRIAN
BRIDGE 200' APPROX.

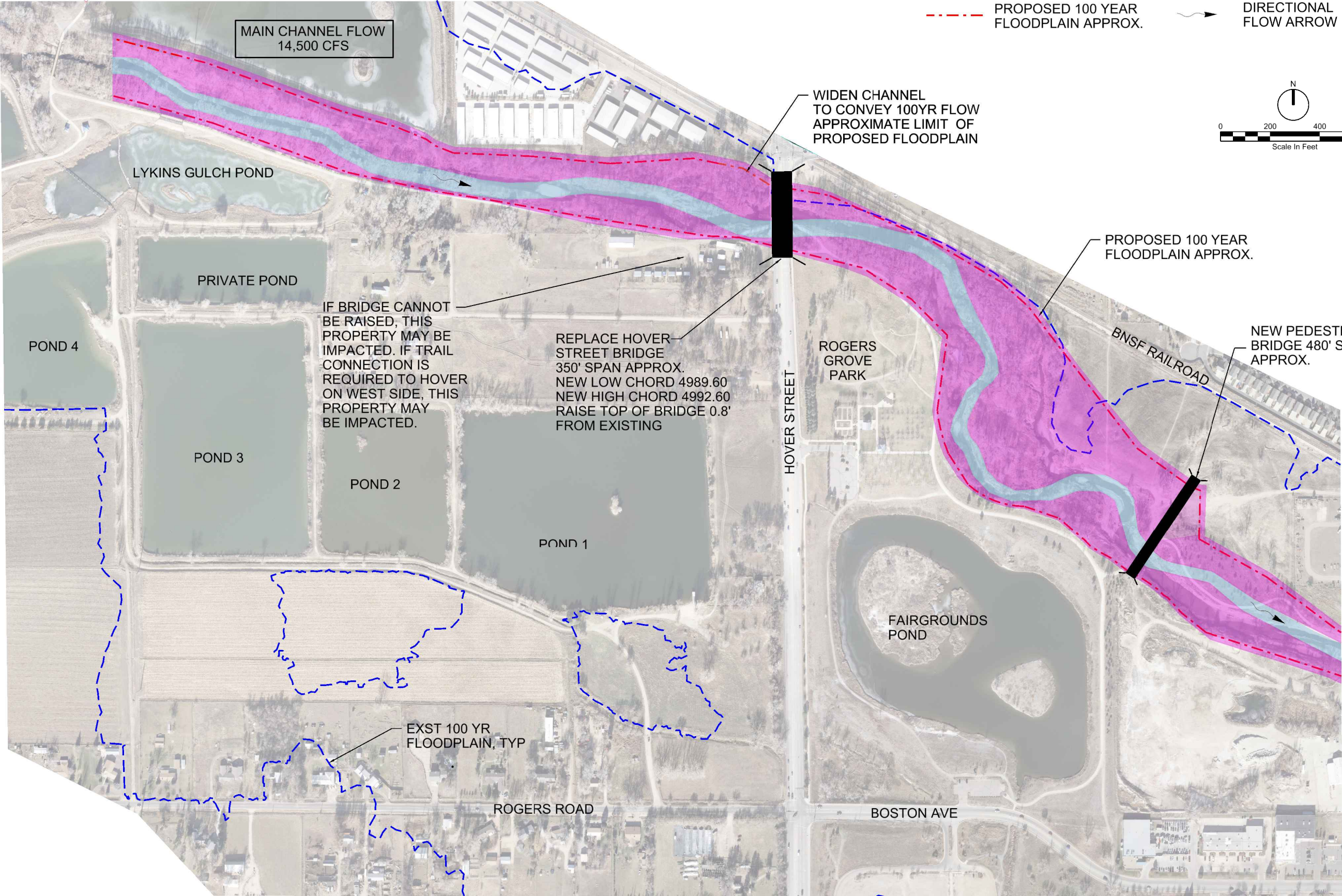
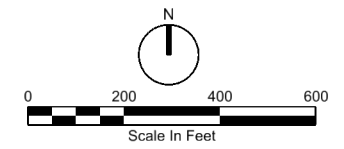
CONSTRUCT NEW LEVEE

EXST 100 YR
FLOODPLAIN, TYP

PRELIMINARY NOT FOR CONSTRUCTION	
9193 S. JAMAICA ST. ENGLEWOOD, CO 80112  City of Longmont	REVISION NO. DATE DSGN DR CHK APVD
CH2MHILL® RESILIENT SAINT VRAIN PROJECT HOVER REACH ANALYSIS ALTERNATIVE 1A SINGLE THREAD WITH LEVEE	
VERIFY SCALE BAR IS ONE INCH ON ORIGINAL DRAWING.	
DATE: OCTOBER 2015 PROJ: 653819 DWG: SHEET: of	

LEGEND

-  BRIDGE/CULVERT
-  EXISTING 100 YEAR FLOODPLAIN
-  PROPOSED 100 YEAR FLOODPLAIN APPROX.
-  SAINT VRAIN LOW FLOW CHANNEL
-  PROPOSED SAINT VRAIN CHANNEL
-  DIRECTIONAL FLOW ARROW



MAIN CHANNEL FLOW
14,500 CFS

WIDEN CHANNEL
TO CONVEY 100YR FLOW
APPROXIMATE LIMIT OF
PROPOSED FLOODPLAIN

PROPOSED 100 YEAR
FLOODPLAIN APPROX.

NEW PEDESTRIAN
BRIDGE 480' SPAN
APPROX.

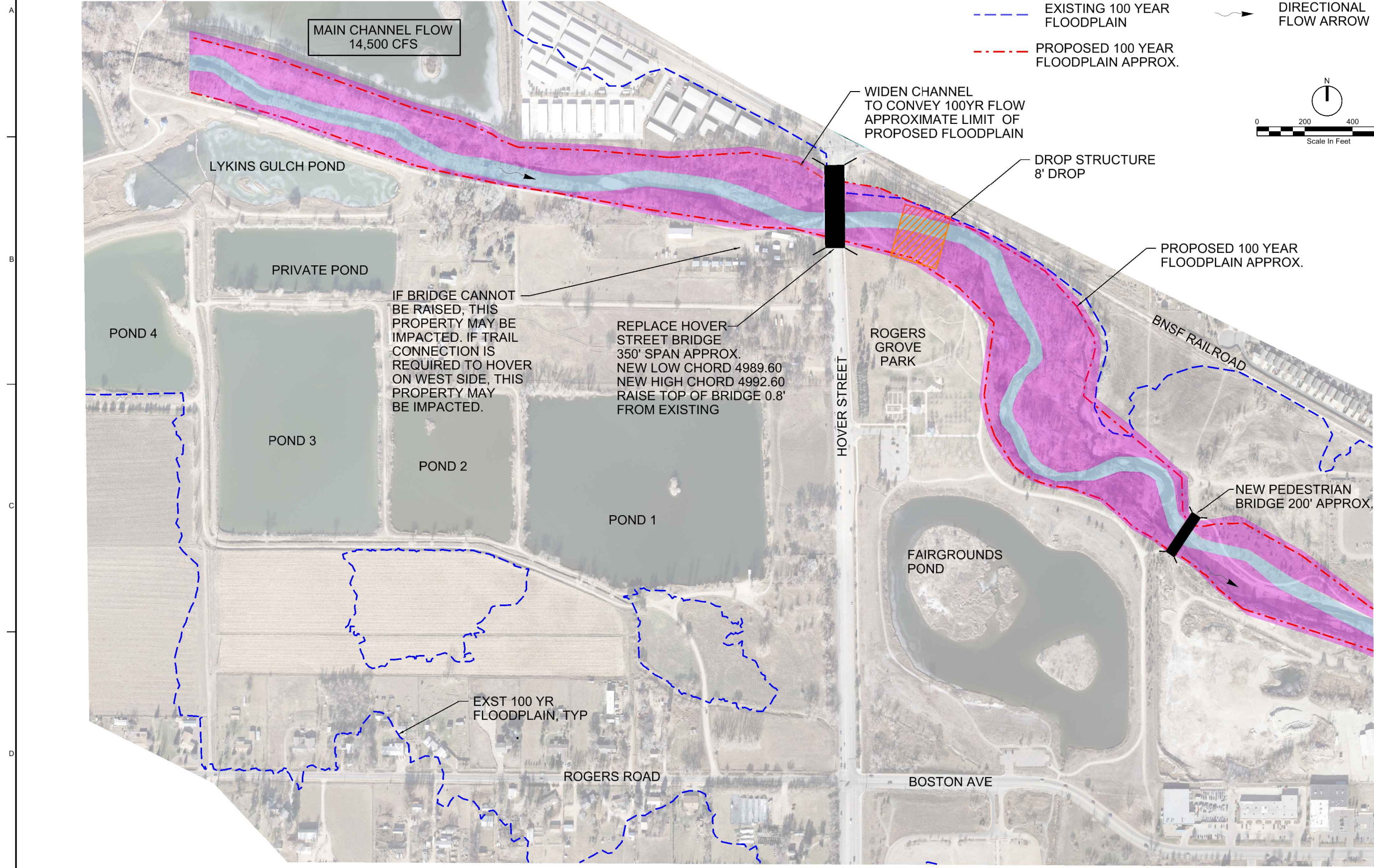
IF BRIDGE CANNOT
BE RAISED, THIS
PROPERTY MAY BE
IMPACTED. IF TRAIL
CONNECTION IS
REQUIRED TO HOVER
ON WEST SIDE, THIS
PROPERTY MAY
BE IMPACTED.

REPLACE HOVER
STREET BRIDGE
350' SPAN APPROX.
NEW LOW CHORD 4989.60
NEW HIGH CHORD 4992.60
RAISE TOP OF BRIDGE 0.8'
FROM EXISTING

EXST 100 YR
FLOODPLAIN, TYP

PRELIMINARY NOT FOR CONSTRUCTION	
CH2MHILL® RESILIENT SAINT VRAIN PROJECT HOVER REACH ANALYSIS ALTERNATIVE 1B SINGLE THREAD WITHOUT LEVEE	City of Longmont 9193 S. JAMAICA ST. ENGLEWOOD, CO 80112
VERIFY SCALE BAR IS ONE INCH ON ORIGINAL DRAWING.	
DATE: OCTOBER 2015	
PROJ: 653819	
DWG:	
SHEET: of	
SPWURL	SPWPATH
FILENAME: Alt 1B WK.dgn	PLOT DATE: \$PLOTDATE
PLOT TIME: \$PLOTTIME	REVISION: BY: APVD
NO. DATE	DR
DGN	CHK
APVD	APVD

REUSE OF DOCUMENTS: THIS DOCUMENT, AND THE IDEAS AND DESIGNS INCORPORATED HEREIN, AS AN INSTRUMENT OF PROFESSIONAL SERVICE, IS THE PROPERTY OF CH2M HILL AND IS NOT TO BE USED, IN WHOLE OR IN PART, FOR ANY OTHER PROJECT WITHOUT THE WRITTEN AUTHORIZATION OF CH2M HILL. © CH2M HILL 2014. ALL RIGHTS RESERVED.



LEGEND

- BRIDGE/CULVERT
- DROP STRUCTURE
- EXISTING 100 YEAR FLOODPLAIN
- PROPOSED 100 YEAR FLOODPLAIN APPROX.
- SAINT VRAIN LOW FLOW CHANNEL
- PROPOSED SAINT VRAIN CHANNEL
- DIRECTIONAL FLOW ARROW

MAIN CHANNEL FLOW
14,500 CFS

WIDEN CHANNEL
TO CONVEY 100YR FLOW
APPROXIMATE LIMIT OF
PROPOSED FLOODPLAIN

DROP STRUCTURE
8' DROP

PROPOSED 100 YEAR
FLOODPLAIN APPROX.

IF BRIDGE CANNOT
BE RAISED, THIS
PROPERTY MAY BE
IMPACTED. IF TRAIL
CONNECTION IS
REQUIRED TO HOVER
ON WEST SIDE, THIS
PROPERTY MAY
BE IMPACTED.

REPLACE HOVER
STREET BRIDGE
350' SPAN APPROX.
NEW LOW CHORD 4989.60
NEW HIGH CHORD 4992.60
RAISE TOP OF BRIDGE 0.8'
FROM EXISTING

NEW PEDESTRIAN
BRIDGE 200' APPROX.

EXST 100 YR
FLOODPLAIN, TYP

CH2MHILL®

RESILIENT SAINT VRAIN PROJECT
HOVER REACH ANALYSIS
ALTERNATIVE 1C
SINGLE THREAD NO LEVEE

City of Longmont
9193 S. JAMAICA ST.
ENGLEWOOD, CO 80112

PRELIMINARY
NOT FOR
CONSTRUCTION





NO.	DATE	DR	CHK	BY	APVD

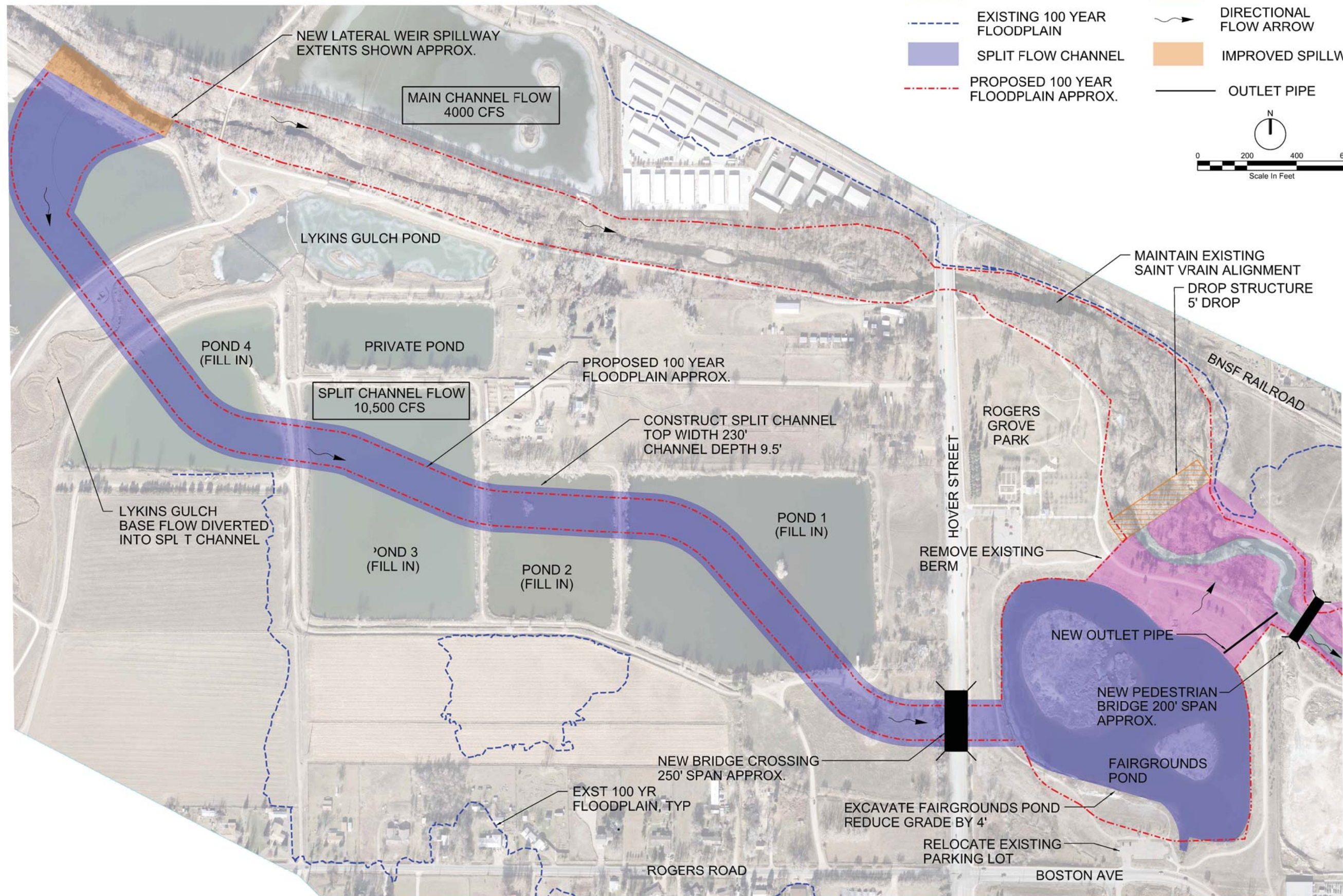
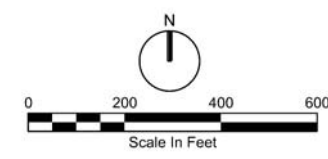
VERIFY SCALE
BAR IS ONE INCH ON ORIGINAL DRAWING.


DATE: OCTOBER 2015
PROJ: 653819
DWG: of
SHEET: of

REUSE OF DOCUMENTS: THIS DOCUMENT, AND THE IDEAS AND DESIGNS INCORPORATED HEREIN, AS AN INSTRUMENT OF PROFESSIONAL SERVICE, IS THE PROPERTY OF CH2M HILL AND IS NOT TO BE USED, IN WHOLE OR IN PART, FOR ANY OTHER PROJECT WITHOUT THE WRITTEN AUTHORIZATION OF CH2M HILL. © CH2M HILL 2014. ALL RIGHTS RESERVED.

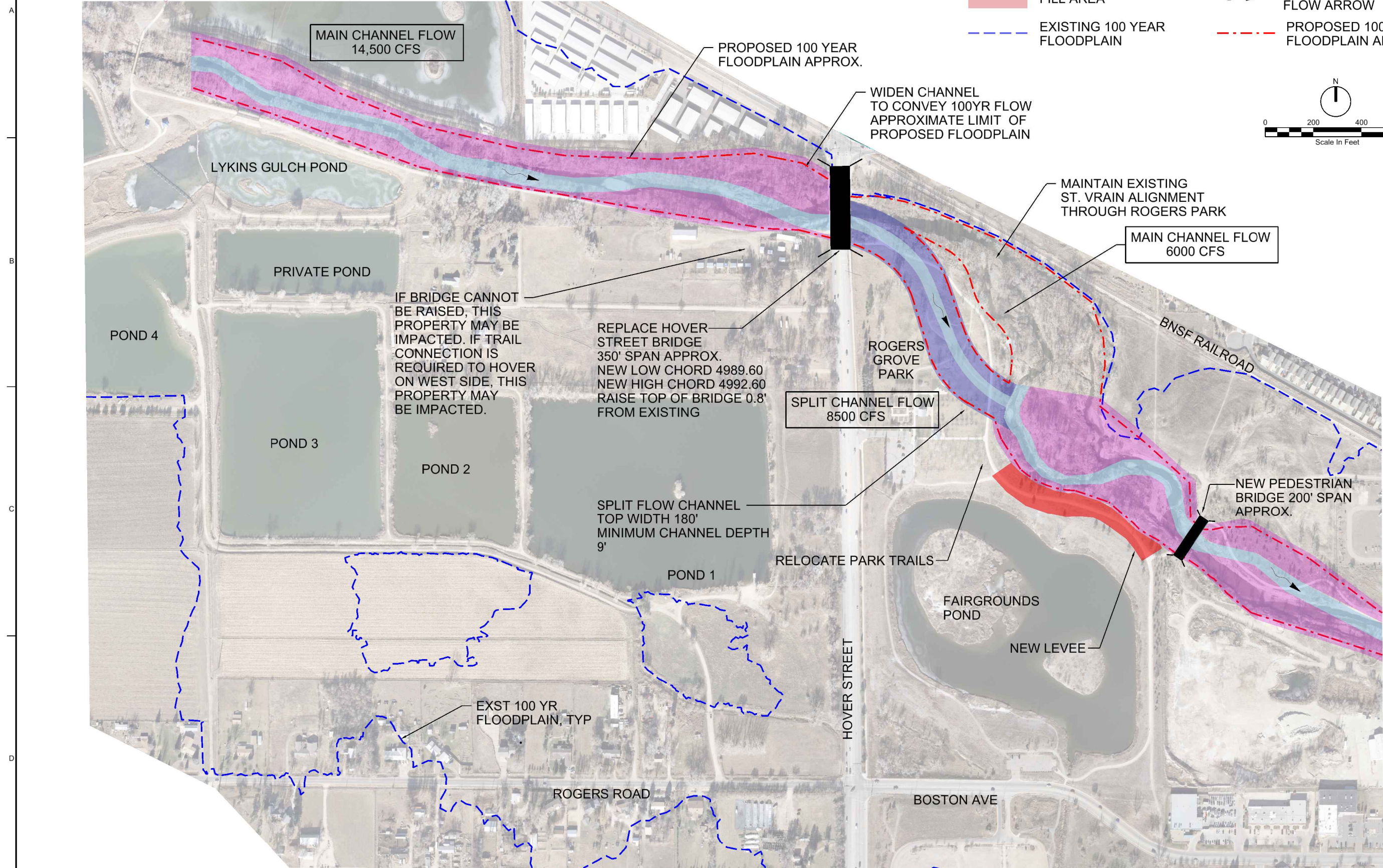
LEGEND

-  BRIDGE/CULVERT
-  DROP STRUCTURE
-  EXISTING 100 YEAR FLOODPLAIN
-  SPLIT FLOW CHANNEL
-  PROPOSED 100 YEAR FLOODPLAIN APPROX.
-  SAINT VRAIN LOW FLOW CHANNEL
-  PROPOSED SAINT VRAIN CHANNEL
-  DIRECTIONAL FLOW ARROW
-  IMPROVED SPILLWAY
-  OUTLET PIPE



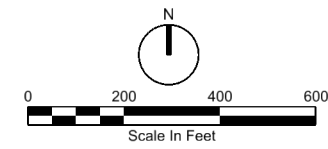
PRELIMINARY NOT FOR CONSTRUCTION	
9193 S JAMAICA ST ENGLEWOOD, CO 80112	
CH2MHILL® RESILIENT SAINT VRAIN PROJECT HOVER REACH ANALYSIS ALTERNATIVE 2B SPLIT FLOW U.S. OF HOVER ST.	
VERIFY SCALE BAR IS ONE INCH ON ORIGINAL DRAWING.	
DATE	OCTOBER 2015
PROJ	653819
DWG	
SHEET	of

REUSE OF DOCUMENTS: THIS DOCUMENT, AND THE IDEAS AND DESIGNS INCORPORATED HEREIN, AS AN INSTRUMENT OF PROFESSIONAL SERVICE, IS THE PROPERTY OF CH2M HILL AND IS NOT TO BE USED, IN WHOLE OR IN PART, FOR ANY OTHER PROJECT WITHOUT THE WRITTEN AUTHORIZATION OF CH2M HILL. © CH2M HILL 2014. ALL RIGHTS RESERVED.



LEGEND

- BRIDGE/CULVERT
- SPLIT FLOW CHANNEL
- FILL AREA
- EXISTING 100 YEAR FLOODPLAIN
- SAINT VRAIN LOW FLOW CHANNEL
- PROPOSED SAINT VRAIN CHANNEL
- DIRECTIONAL FLOW ARROW
- PROPOSED 100 YEAR FLOODPLAIN APPROX.



PRELIMINARY NOT FOR CONSTRUCTION

NO.	DATE	DR	CHK	BY	APVD

9193 S. JAMAICA ST
ENGLEWOOD, CO 80112

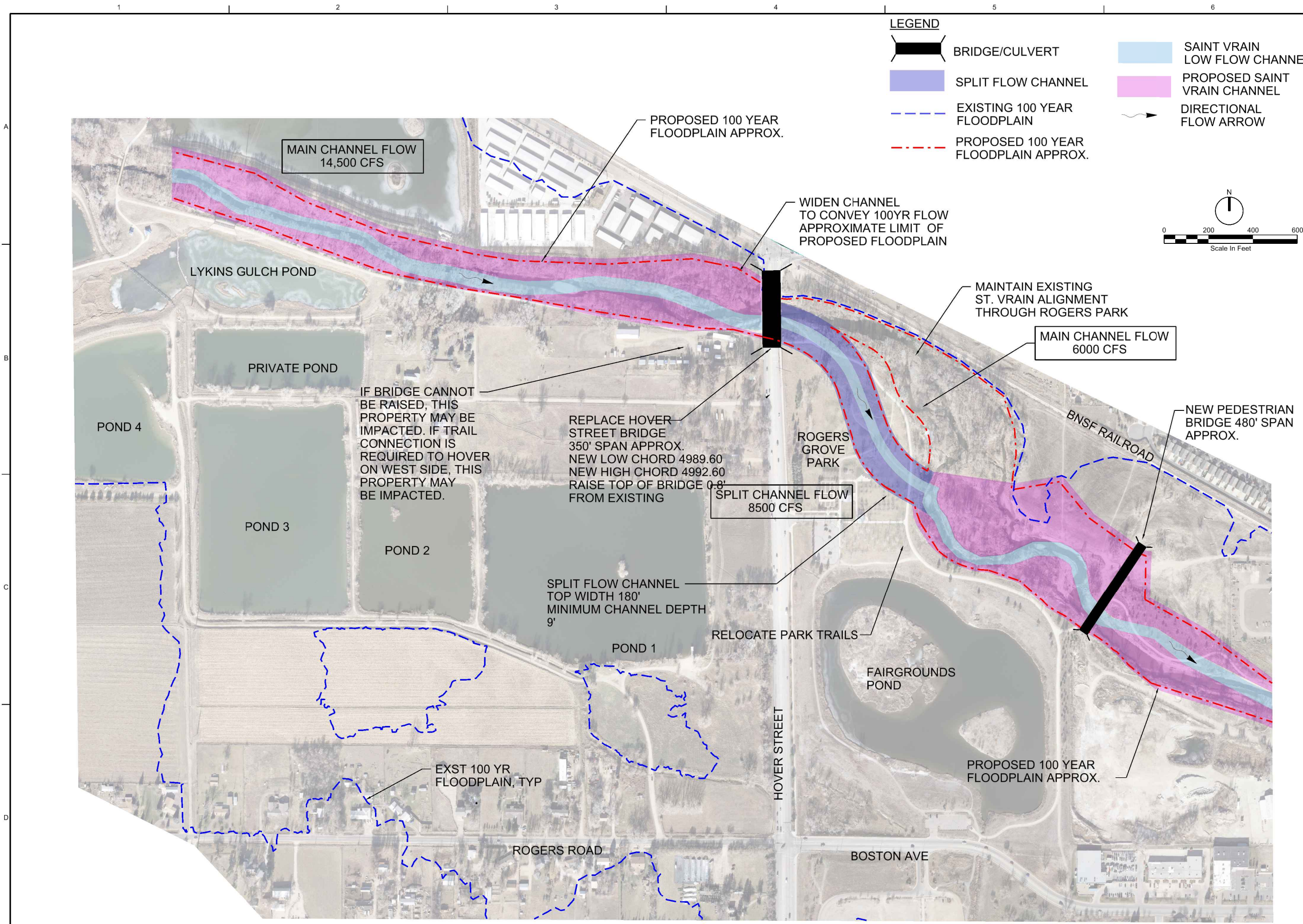
City of Longmont

CH2MHILL®

RESILIENT SAINT VRAIN PROJECT
HOVER REACH ANALYSIS
ALTERNATIVE 3A
SPLIT FLOW D.S. OF HOVER ST. W/LEVEE

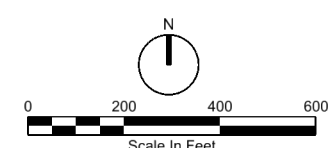
VERIFY SCALE	BAR IS ONE INCH ON ORIGINAL DRAWING.
DATE	OCTOBER 2015
PROJ	653819
DWG	
SHEET	of

REUSE OF DOCUMENTS: THIS DOCUMENT, AND THE IDEAS AND DESIGNS INCORPORATED HEREIN, AS AN INSTRUMENT OF PROFESSIONAL SERVICE, IS THE PROPERTY OF CH2M HILL AND IS NOT TO BE USED, IN WHOLE OR IN PART, FOR ANY OTHER PROJECT WITHOUT THE WRITTEN AUTHORIZATION OF CH2M HILL. © CH2M HILL 2014. ALL RIGHTS RESERVED.



LEGEND

- BRIDGE/CULVERT
- SPLIT FLOW CHANNEL
- EXISTING 100 YEAR FLOODPLAIN
- PROPOSED 100 YEAR FLOODPLAIN APPROX.
- SAINT VRAIN LOW FLOW CHANNEL
- PROPOSED SAINT VRAIN CHANNEL
- DIRECTIONAL FLOW ARROW



CH2MHILL®

RESILIENT SAINT VRAIN PROJECT
HOVER REACH ANALYSIS
ALTERNATIVE 3B
SPLIT FLOW D.S. OF HOVER ST. W/O LEVEE

9193 S. JAMAICA ST.
ENGLEWOOD, CO 80112

City of Longmont

REUSE OF DOCUMENTS: THIS DOCUMENT AND THE IDEAS AND DESIGNS INCORPORATED HEREIN, AS AN INSTRUMENT OF PROFESSIONAL SERVICE, IS THE PROPERTY OF CH2M HILL AND IS NOT TO BE USED, IN WHOLE OR IN PART, FOR ANY OTHER PROJECT WITHOUT THE WRITTEN AUTHORIZATION OF CH2M HILL. © CH2M HILL 2014. ALL RIGHTS RESERVED.

DATE	OCTOBER 2015	NO.	DATE	DR	APVD	PRELIMINARY NOT FOR CONSTRUCTION
PROJ	653819	REVISION	CHK	BY	APVD	
DWG						
SHEET						

VERIFY SCALE
BAR IS ONE INCH ON ORIGINAL DRAWING.

FILENAME: Alt 3B WK.dgn PLOT DATE: \$PLOTDATE PLOT TIME: \$PLOTTIME

