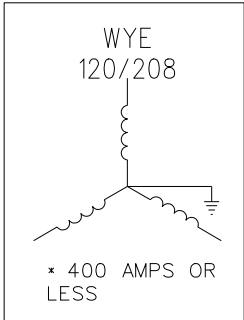


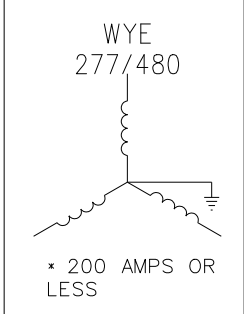
ALL NEW COMMERCIAL METERING INSTALLATIONS REQUIRE THE INSTALLATION OF FAULT LIMITING DISCONNECTS ON THE LINE SIDE OF THE METER. THE FUSED DISCONNECT SHALL BE PURCHASED, INSTALLED AND OWNED BY THE CUSTOMER AND SHALL INCLUDE PROVISIONS FOR AN LPC SEAL. WIRE SEALS WILL BE USED BY LPC TO SECURE THE ENCLOSURE FROM UNAUTHORIZED ENTRY BUT WILL ALLOW THE CUSTOMER EMERGENCY ACCESS FOR FUSE REPLACEMENT.

\* ALL COMMERCIAL METERING INSTALLATIONS ARE REQUIRED TO BE COLD SEQUENCED



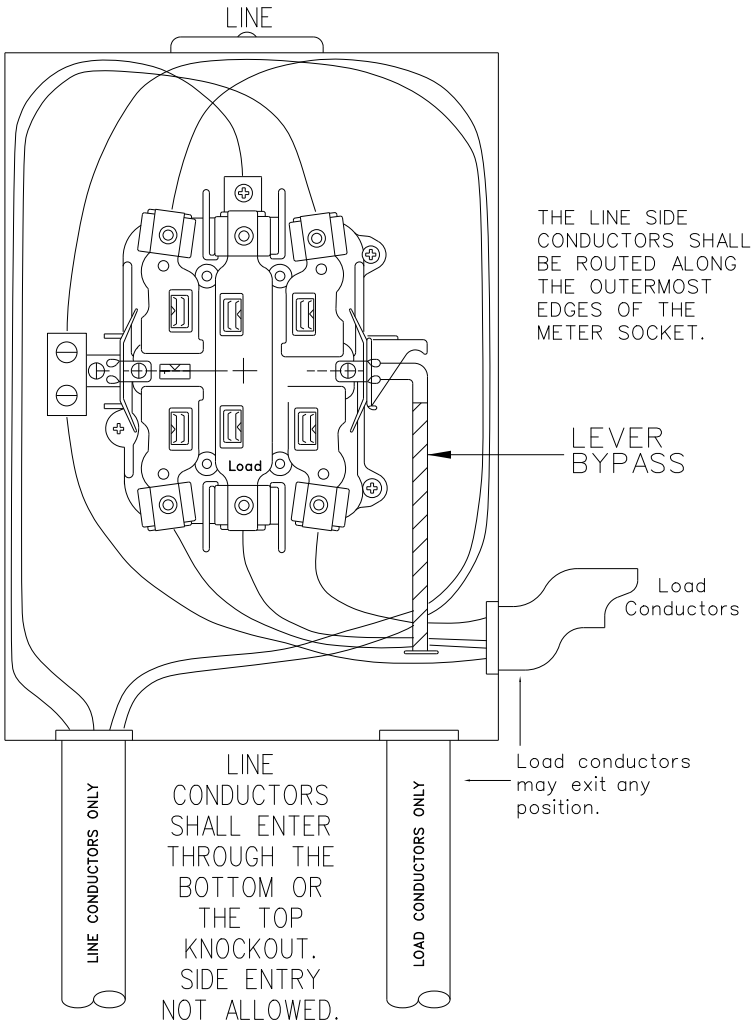
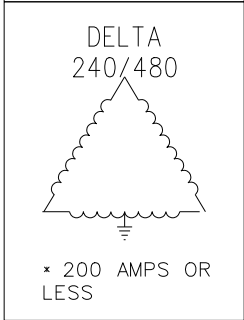
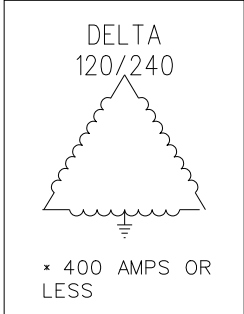
\*277/480V 201 AMPS AND ABOVE WILL REQUIRE CT'S AND PT'S

LEVER OPERATED BYPASS REQUIRED ON ALL SERVICES 400 AMPS OR LESS, EXCLUDING CT RATED SERVICES



7TH TERMINAL REQUIRED AND SHALL BE CONNECTED TO THE NEUTRAL WITHIN THE METER SOCKET.

HIGH-LEG MARKING. THE SERVICE ENTRANCE CONDUCTOR INTENDED TO BE CONNECTED TO THE HIGH-LEG OF A 3-PHASE, 4 WIRE DELTA-CONNECTED SYSTEM SHALL BE DURABLY AND PERMANENTLY MARKED AT BOTH ENDS OF THE CONDUCTOR BY AN OUTER FINISH THAT IS ORANGE IN COLOR AND SHALL BE INSTALLED IN THE FAR RIGHT HAND POSITION OF THE METER MOUNTING BLOCK.



WIRING CONFIGURATION FOR 3 PHASE  
NON-CT RATED  
N.T.S.



Print Date: 9/12/2019	<p>CITY of LONGMONT</p> <p>1100 S SHERMAN ST Longmont, CO 80501</p> <p>Phone: 303-651-8386 FAX: 303-651-8796</p>	DETAIL
File: MTR Drawings.cel		<p>MTR-16</p>
REVISION BY: NOTEBOOMJ		
SCALE: NOT TO SCALE		