

YOU CAN BE A PRO RECYCLER

Use these helpful 3-Steps to develop good recycling habits



Step 1: Know Before You Throw

The following items **CANNOT** be recycled in your *curbside recycling bin*.

For more information on why and options for responsible disposal, visit our website <https://bit.ly/longmont-recycles>.



NO plastic bags, plastic film wraps

Why? It gets tangled in the recycling equipment.

Instead: Return plastic bags, wrap and film to grocery store collection bins to be properly recycled.



NO Styrofoam™ food containers

Why? Styrofoam is not recyclable in our area

Instead: Place in trash and try to use alternative take-away food containers.



NO paper towels, napkins and tissues

Why? Fibers aren't strong enough to be recycled into new paper products.

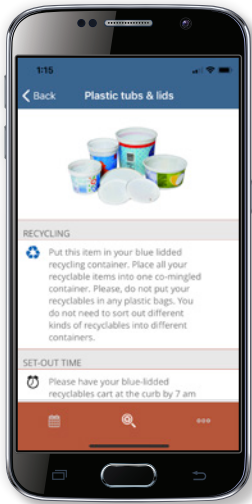
Instead: Please compost or use cloth reusable towels.



NO scrap metal, coat hangers, spare auto parts

Why? These items damage the recycling machinery.

Instead: Bring them to the waste diversion center and place it in the special scrap metal collection bin.



Step 2: Download the Waste Services app

Our free Longmont Waste Services mobile app can help with all your recycling-related questions.

- Wondering what can and can't be recycled? Simply search the item in the app to find out what should be recycled, composted or thrown in the garbage — so you can sort your waste properly.
- View the collection schedule to find your trash, recycling and compost pickup days.
- Learn about special collection services, changes to your collection routes, and more.



Step 3: Rinse to Recycle

Be sure to empty, lightly rinse your recyclable cans, bottles and jars before putting them in your recycling bin. Items with residue can cause odors and attract pests in your bin and at the processing centers.



Thanks, Longmont, for helping us recycle more and recycle better.

For answers to frequently asked questions, more information, or for recycling pick-up times and dates in your area, visit our website <https://bit.ly/longmont-recycles>.



**RECYCLE
COLORADO**