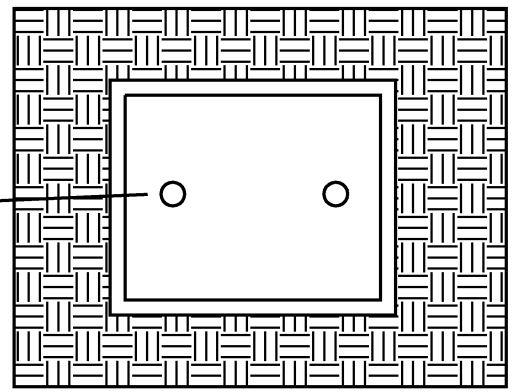
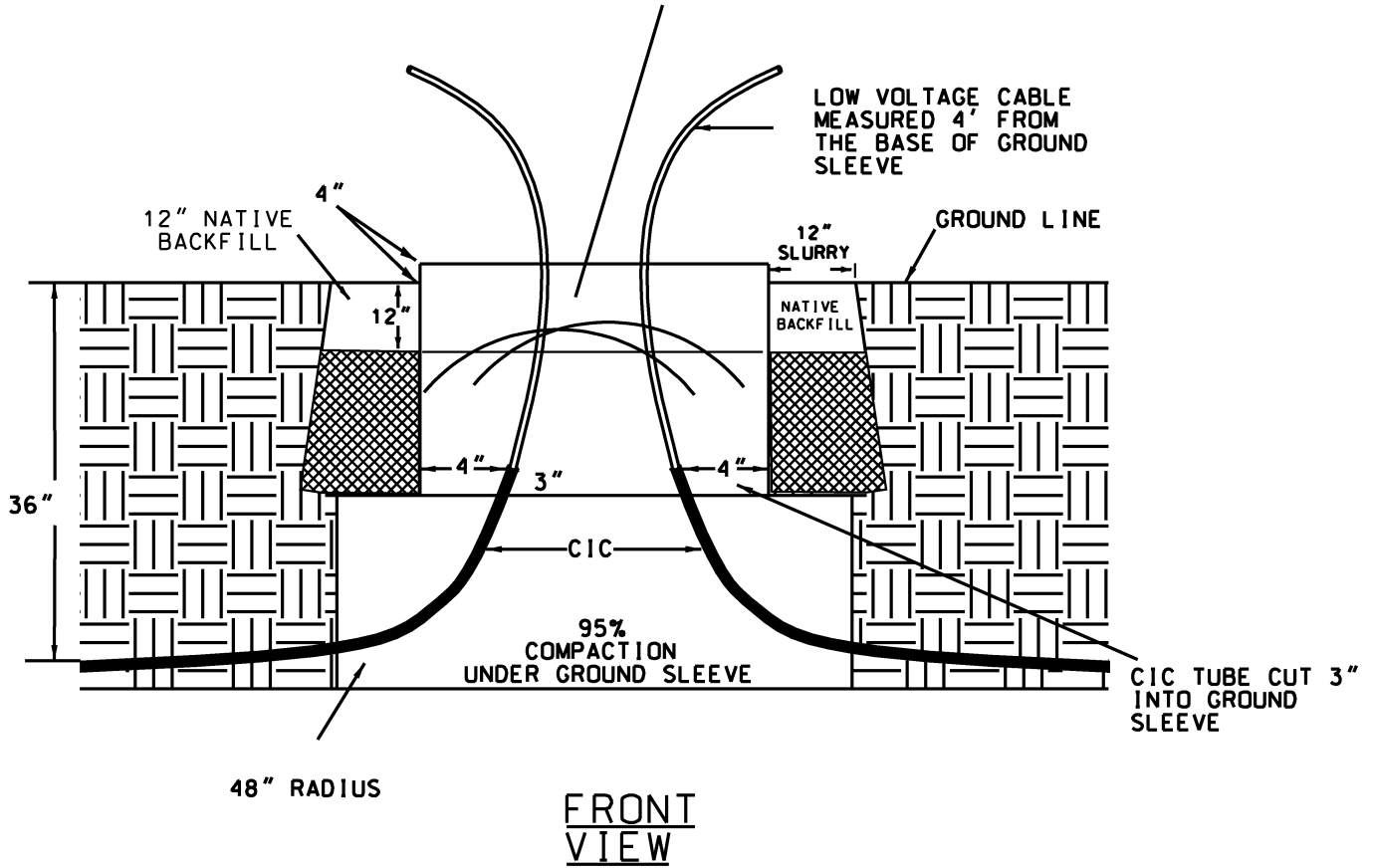


SECONDARY OR LOW VOLTAGE CABLE



TOP
VIEW

LEAVE WIRE WITH MINIMAL LOOP
FOR TEMPORARY STORAGE



FRONT
VIEW

1. GROUND SLEEVE MUST BE LEVEL
2. SET 4" ABOVE FINAL GRADE
3. PROVIDE 95% COMPACTION UNDER AND AROUND THE SLEEVE
4. PROVIDE SIDE COMPACTION WITH 12" APPROVED SLURRY MIX
5. CABLE LENGTH SHALL BE 4' AND MEASURED FROM THE BASE OF THE GROUND SLEEVE
6. THE CABLE DUCT SHALL HAVE 3" EXPOSED IN THE GROUND SLEEVE
7. CABLE SWEEP INTO GROUND SLEEVE MUST BE GRADUAL AND HAVE A 48" RADIUS
8. MUST MAINTAIN CLEARANCES FROM VEHICLES OR BE TRAFFIC RATED; REFERENCE CLEARANCE AND BOLLARD DETAIL DRAWINGS

	SECONDARY JUNCTION FACILITY GROUND SLEEVE		
	REV. 2	700-12	SCALE: NA
POWER & COMMUNICATIONS	DATE: 10/07	DRAWN BY: RAWTMF, KZ	APPROVAL: