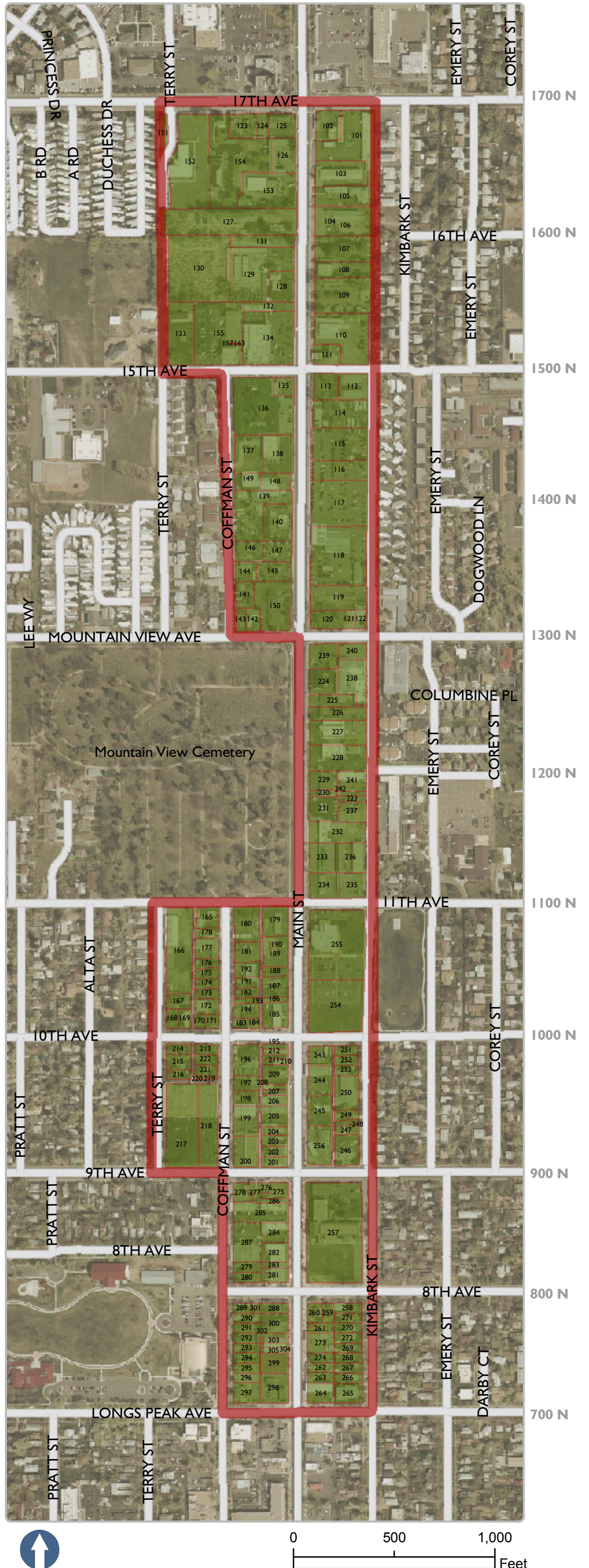


Longmont Midtown Redevelopment Plan Conditions Survey

f. Unusual topography or inadequate public improvements

Problems with one or more of the following:

- Slopes or Unusual Terrain
- Street Pavement
- Curb & Gutter
- Street Lighting
- Utilities Not Buried
- Lack of Sidewalks
- Water/Sewer Service
- Storm Sewer/Drainage



[Draft 22 Sep 05]