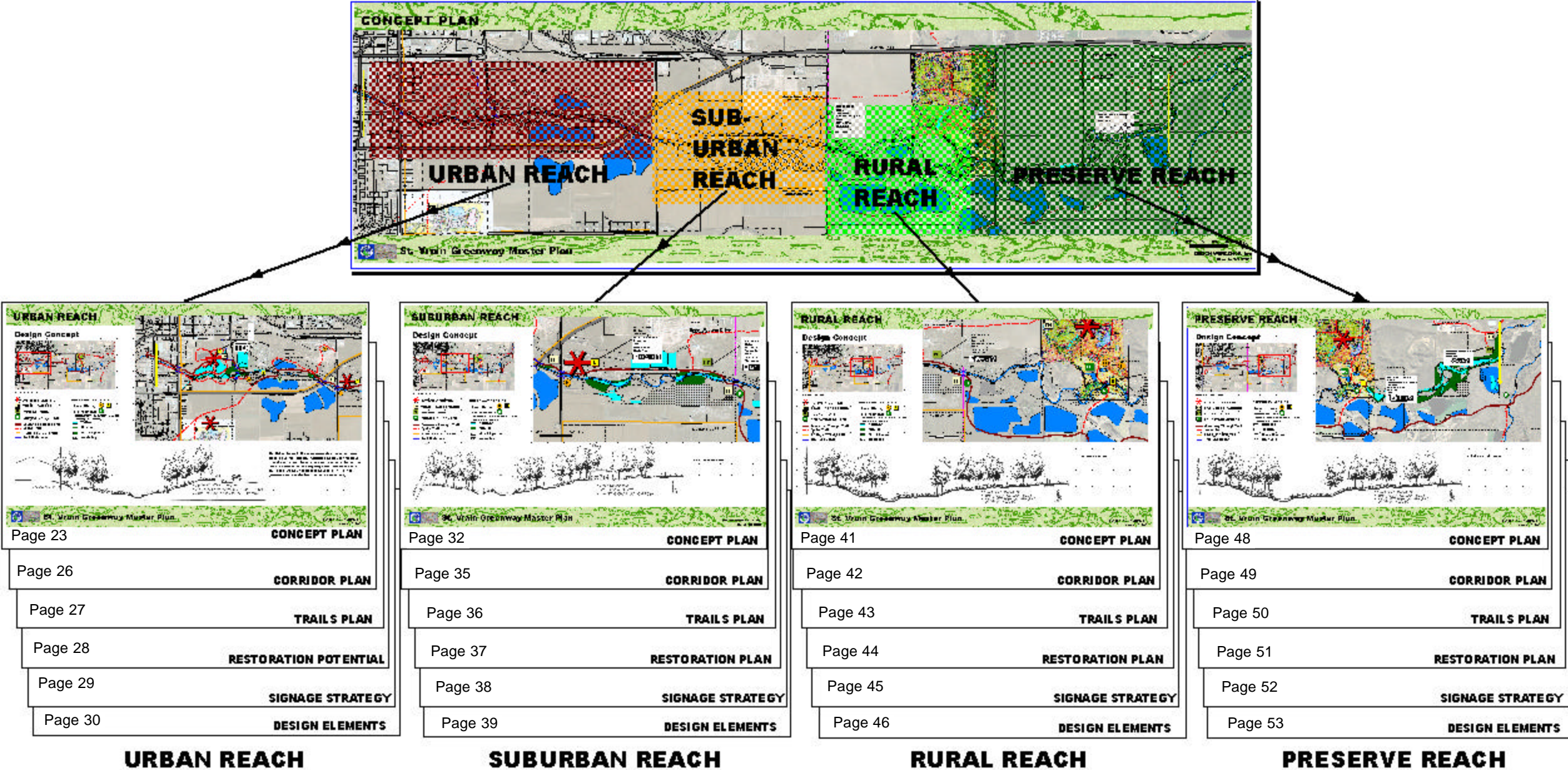


Vision Plan by Reach

Each of the four Reaches has a Concept Plan, Corridor Plan, Trail Plan, Restoration Potential Plan, Signage Strategy, and Design Elements.



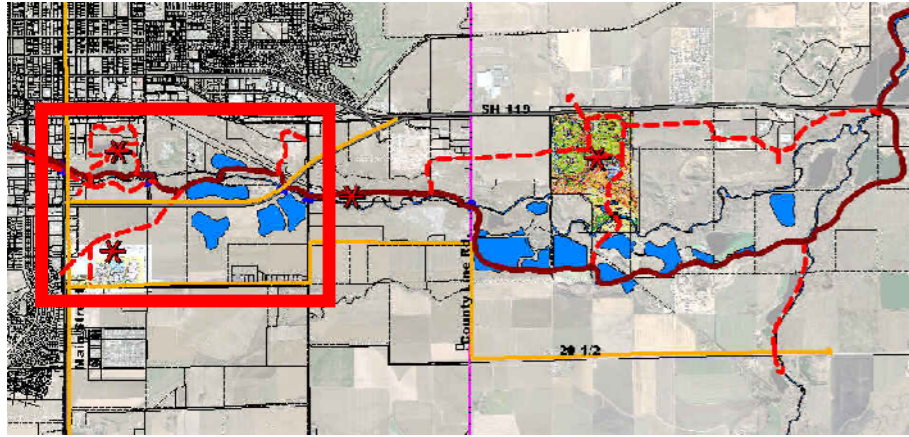
Urban Reach



South Pratt Parkway to 119th Street

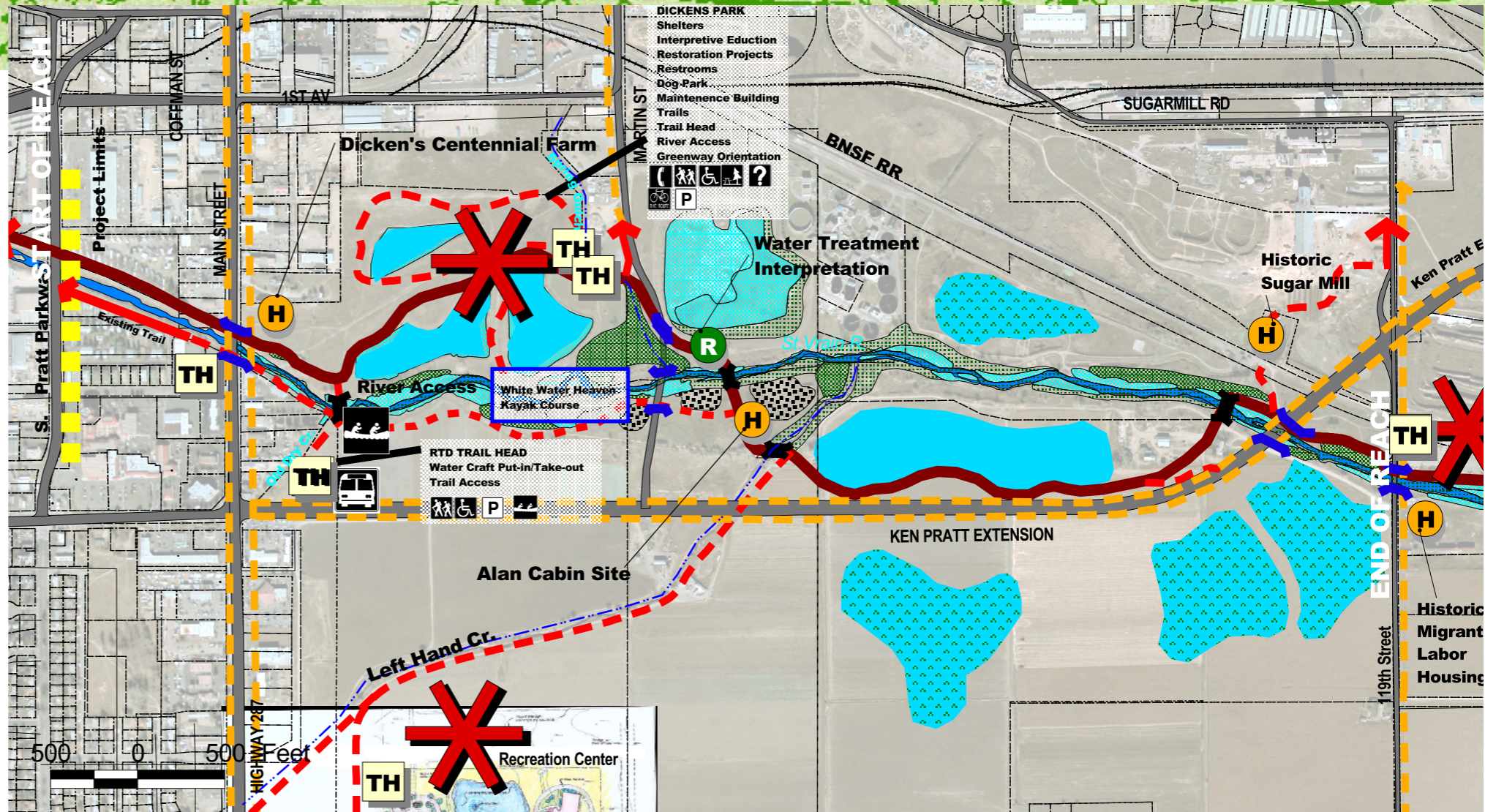
URBAN REACH

Concept Plan

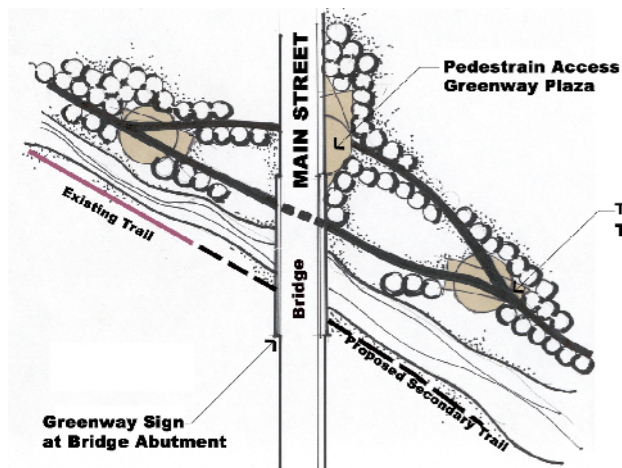


REGIONAL CONTEXT:

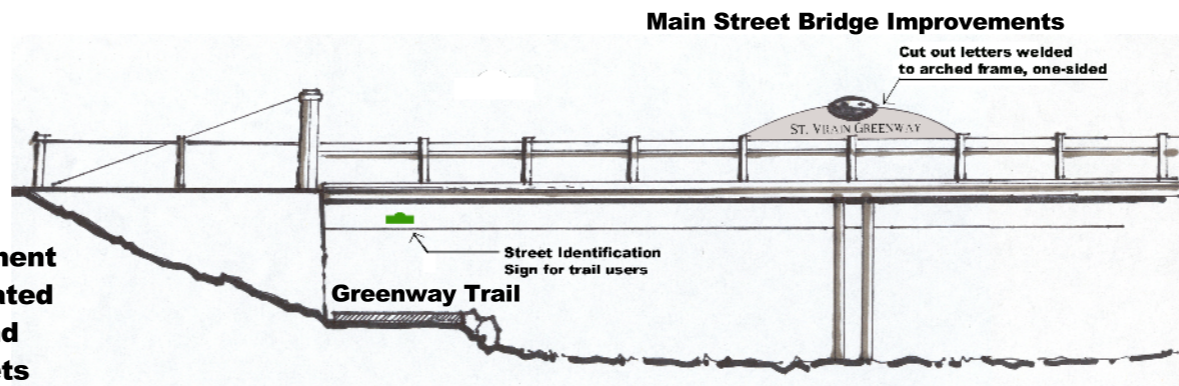
- ACTIVITY CENTER**
 - TRAILHEAD PARKING**
 - POCKET PARK**
 - EDUCATION CENTER**
 - Greenway Through Trail**
 - Secondary Trail**
 - Bike Path & On-street Lanes**
 - Trail Underpass**
-
- GREENWAY STORIES:**
- Local History**
 - Environmental**
preservation / reclamation / restoration
water cycle / wildlife /
 - Wetlands**
 - Riparian**
 - Mixed Riparian**
 - Prairiedogs**



Main Street Entry Plaza Concept



Elements from the Downtown Improvement Plan should be repeated at the entry plaza and where the ramp meets the Greenway trail



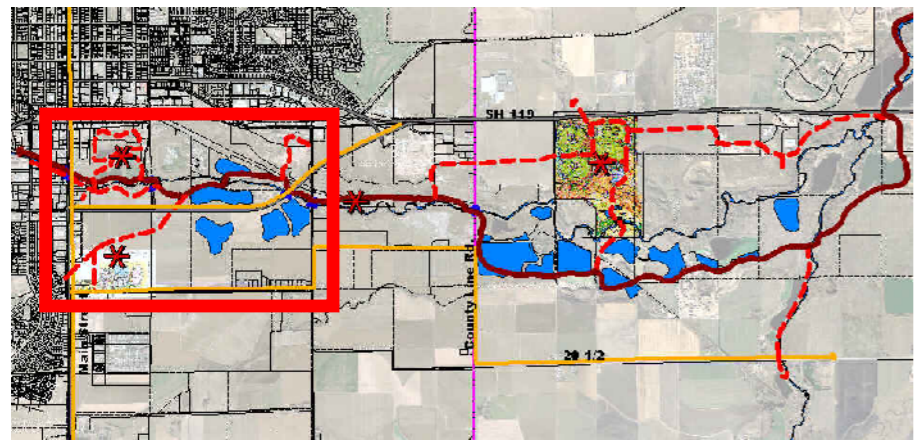
The Urban Reach is the most recreationally active zone along Greenway Corridor. Activities include all trail uses except equestrian. A large urban park adjacent to the trail will allow for picnicking, fishing, dog parks, and other urban park uses. Adjacent land uses need to front onto the Greenway and use the trail system as an amenity.



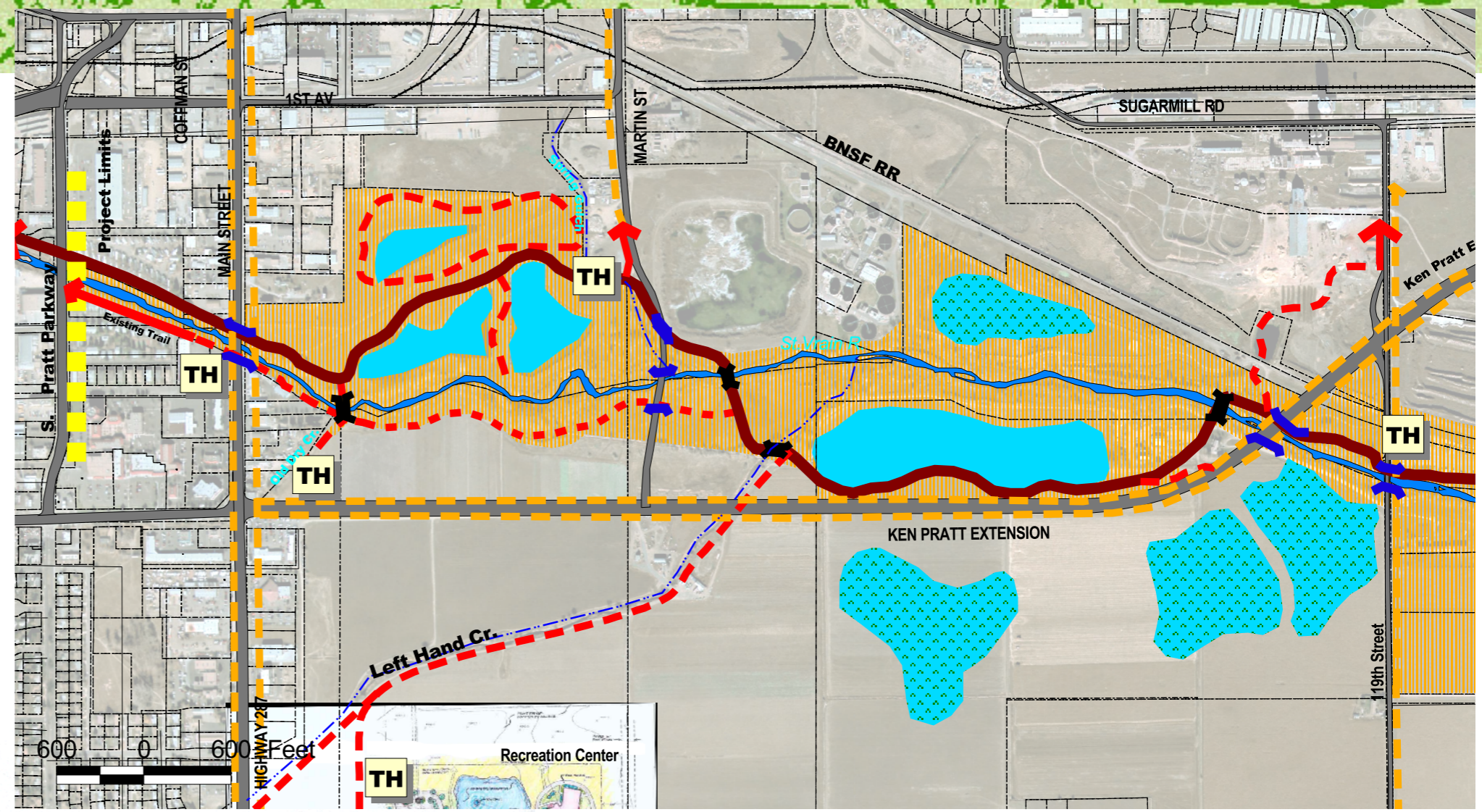
St. Vrain Greenway Master Plan

URBAN REACH

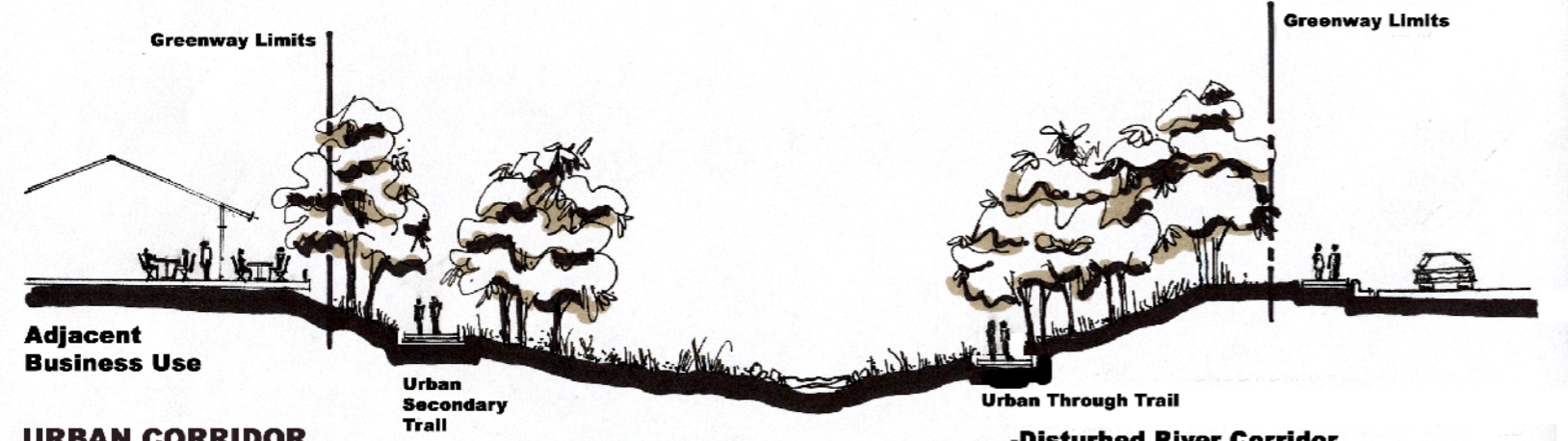
Corridor Plan



REGIONAL CONTEXT:



 Greenway Corridor



URBAN CORRIDOR

- Disturbed River Corridor
- Natural Character Needs to be Improved
- More Intensive Recreational Uses
- Controlled River Access

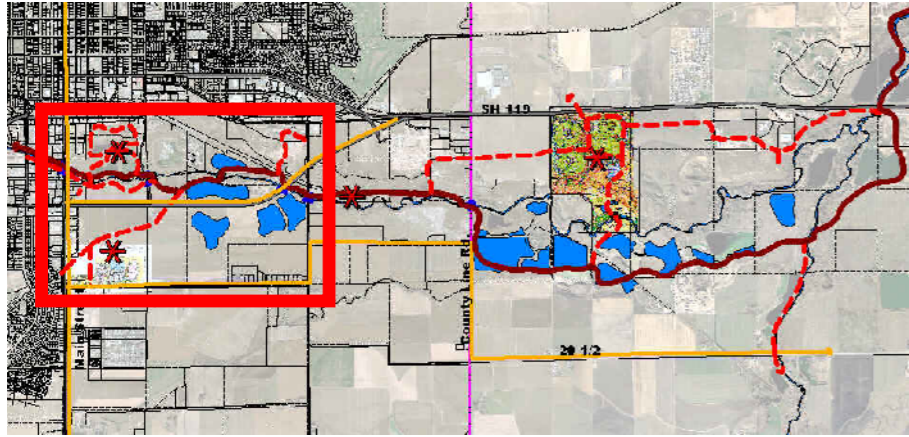
The width of the Corridor needs to be adequate to protect the resource, as well as respond to activity areas and resource constraints along the Greenway. In general, this Corridor width should be narrow enough to encourage adjacent uses, taking every opportunity to use the trails as an amenity.



St. Vrain Greenway Master Plan

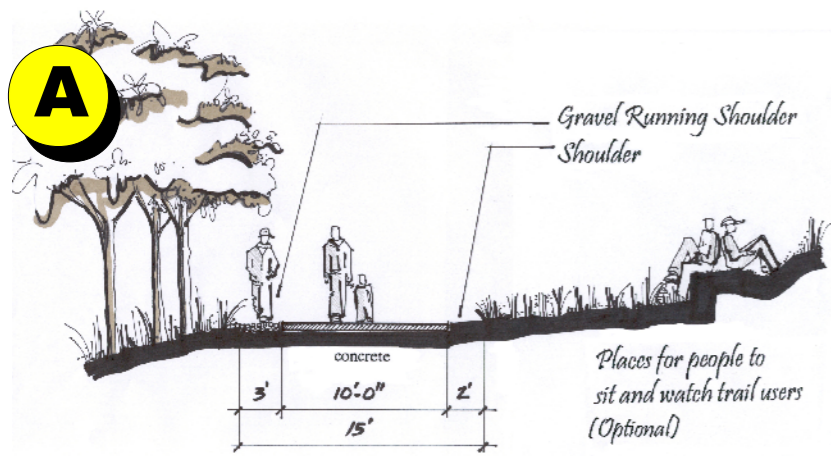
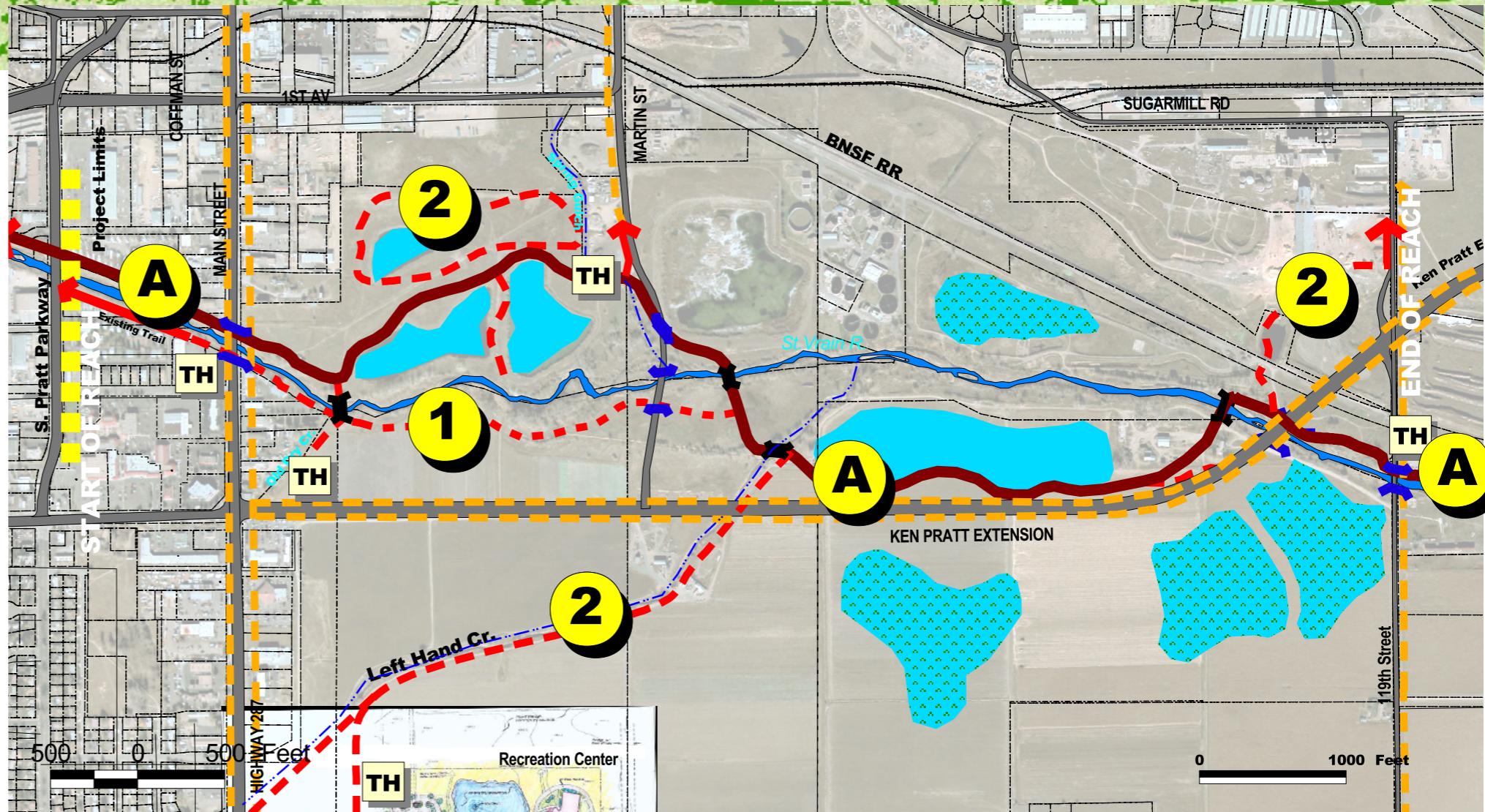
URBAN REACH

Trail Plan

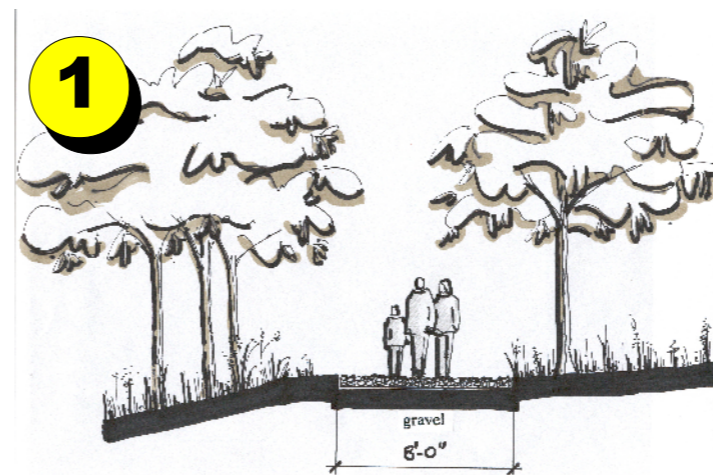


REGIONAL CONTEXT:

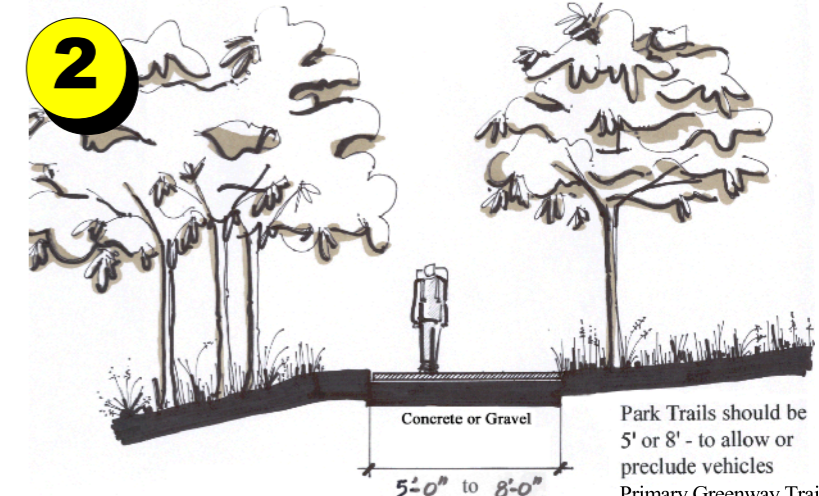
- Existing Trail
- Urban/Suburban Through Trail
- Urban Secondary Trail
- Primary Greenway and Park Trails
- Roadway Trails
- Trailhead (Parking)



Urban/Suburban Through Trail



Urban Secondary Trail



Greenway Trail or Park Trail

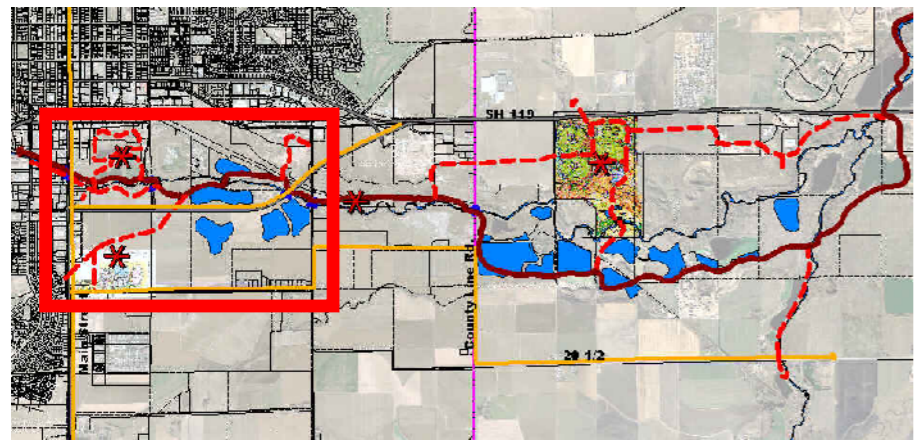
Park Trails should be 5' or 8' - to allow or preclude vehicles
Primary Greenway Trail to be 8' concrete



St. Vrain Greenway Master Plan

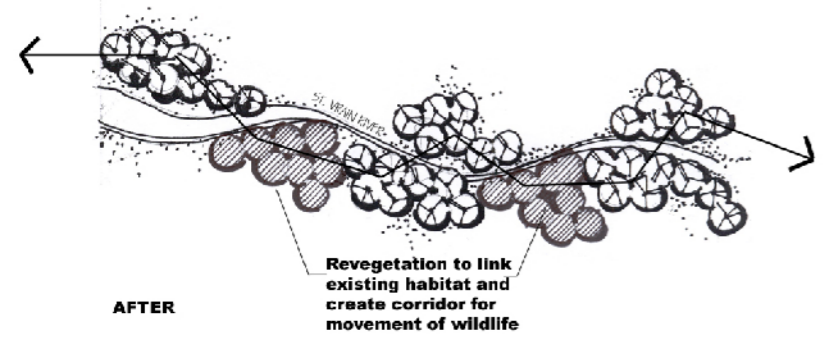
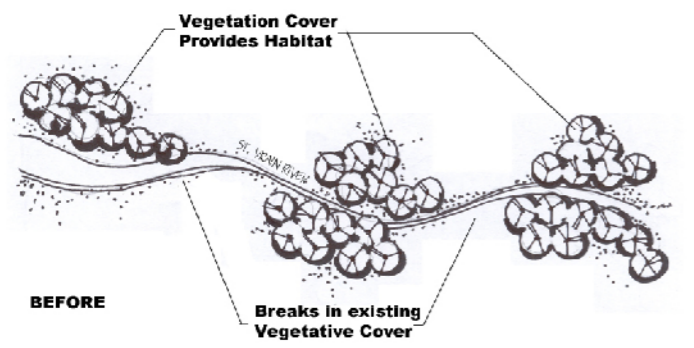
URBAN REACH

Restoration Potential

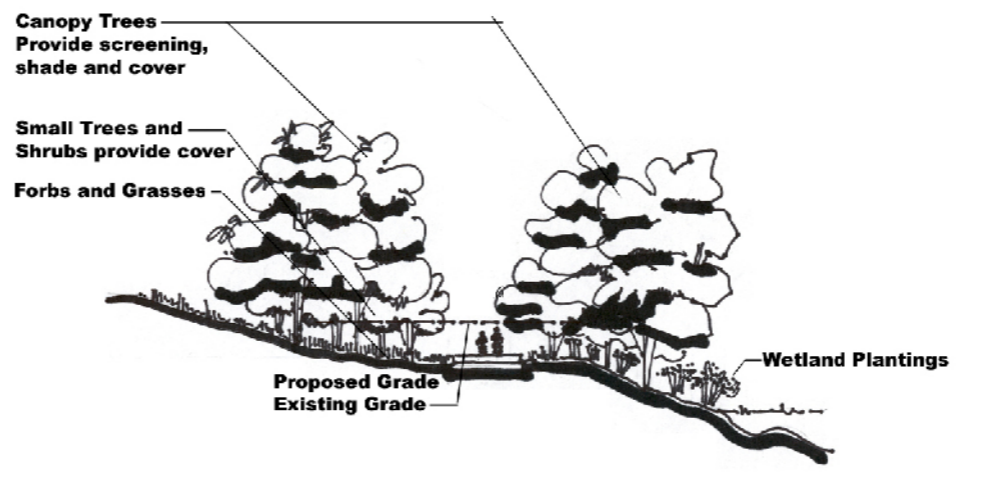
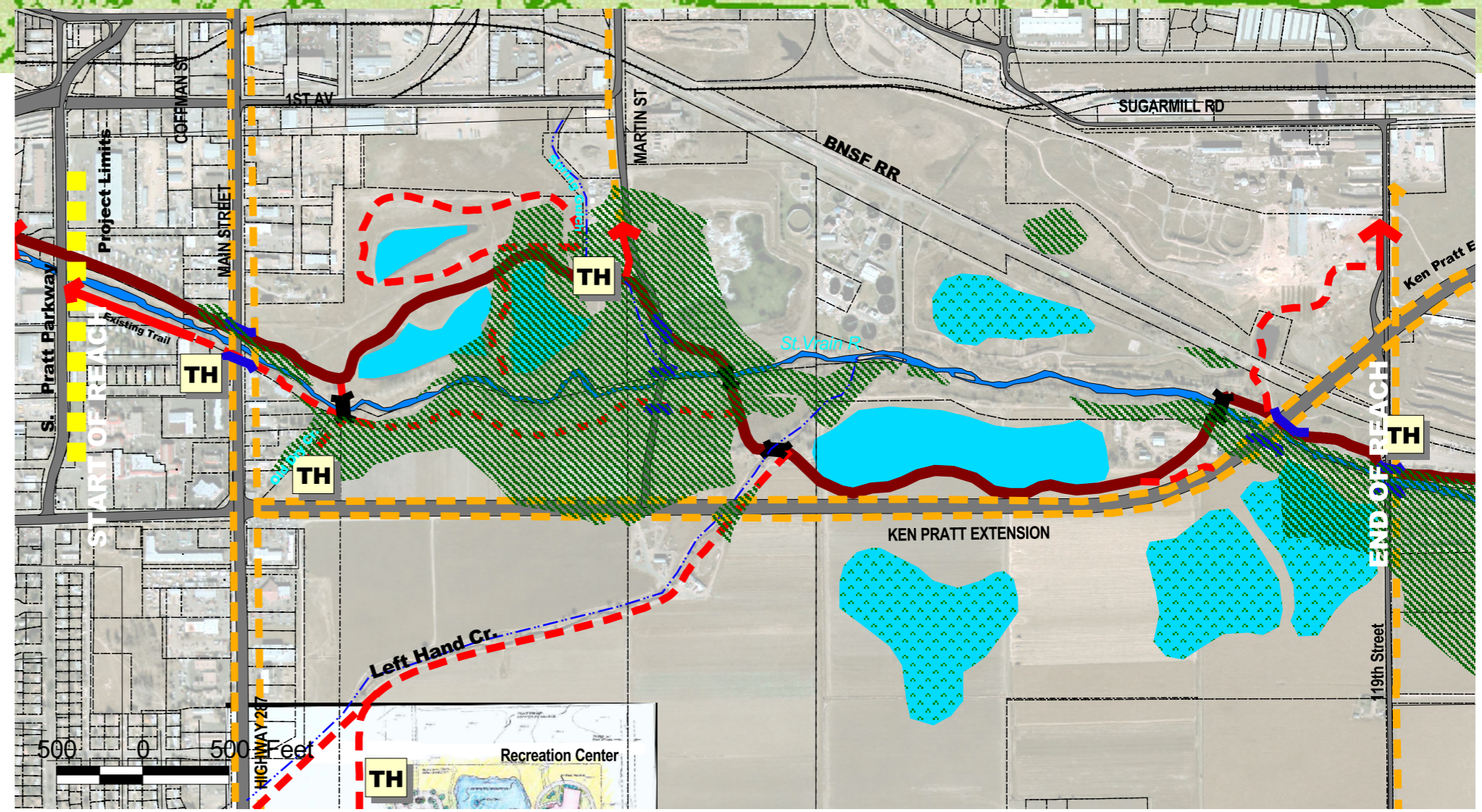


REGIONAL CONTEXT:

Restoration Potential, Highest



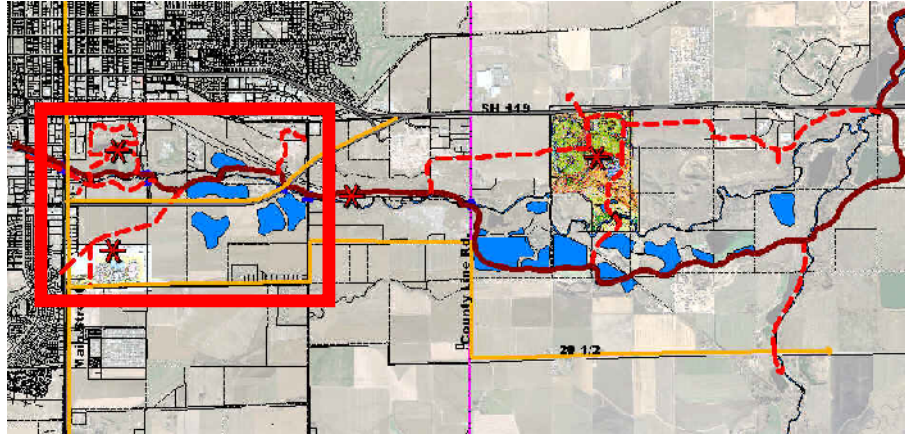
REVEGETATION PLANS



St. Vrain Greenway Master Plan

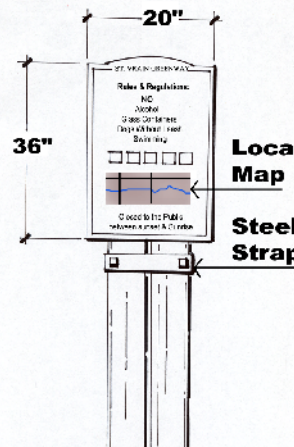
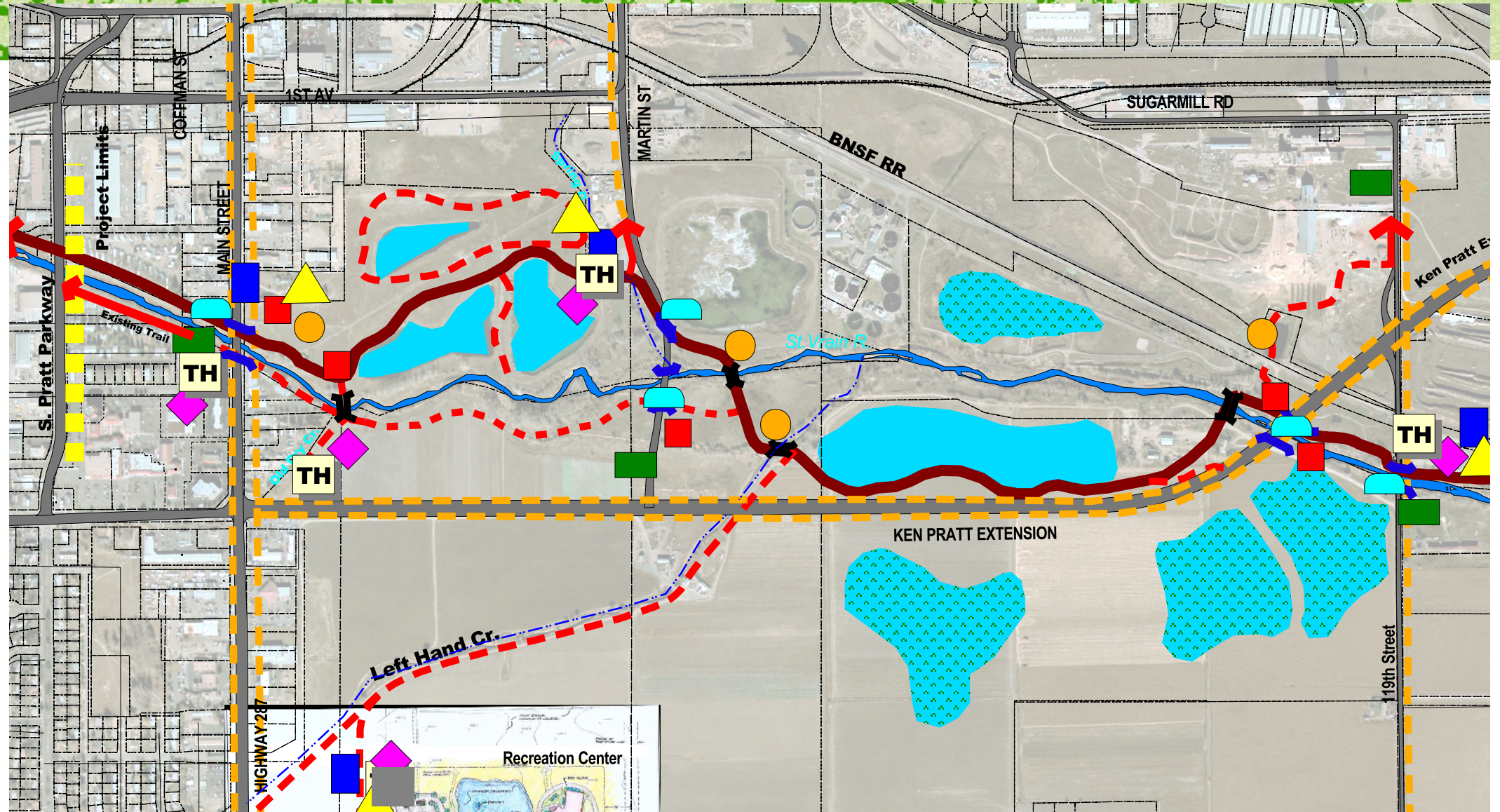
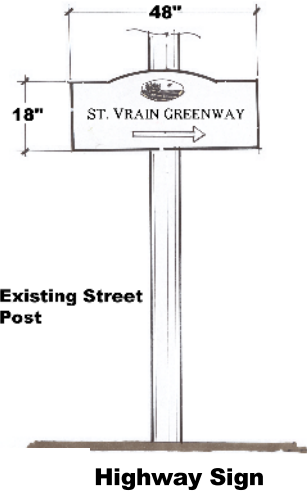
URBAN REACH

Signage Strategy

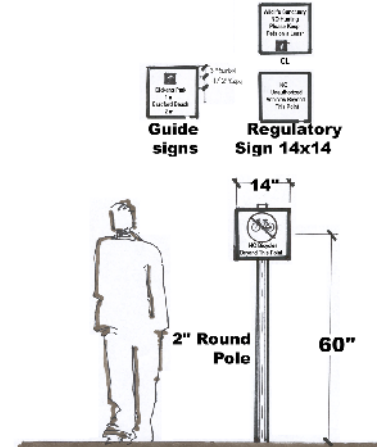


REGIONAL CONTEXT:

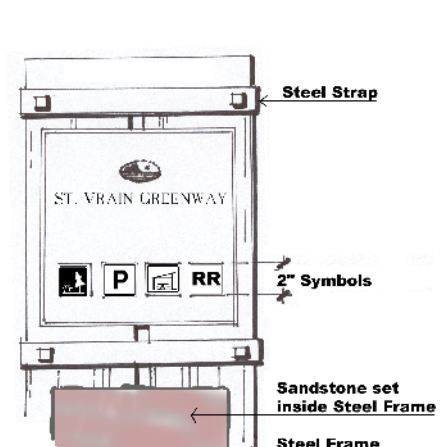
- 1 - Highway Sign
- 2 - Rules & Regulations
- 3 - Regulatory Signs
- ◆ 4 - Trail Marker
- ▲ 5 - Free Standing Park Sign
- 6 - Interpretive Signs
- ◐ 7 - Bridge Identity Sign



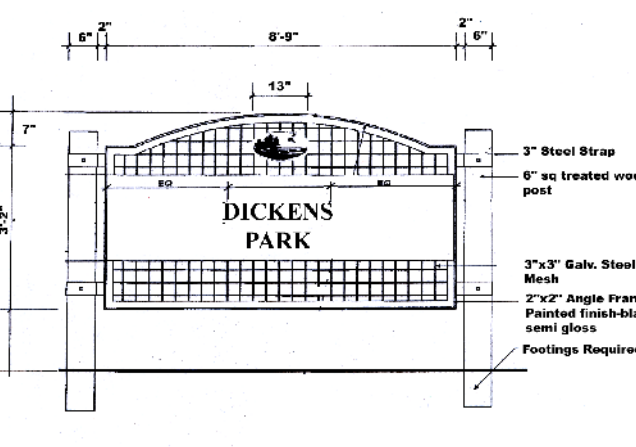
2 - Rules & Regulations



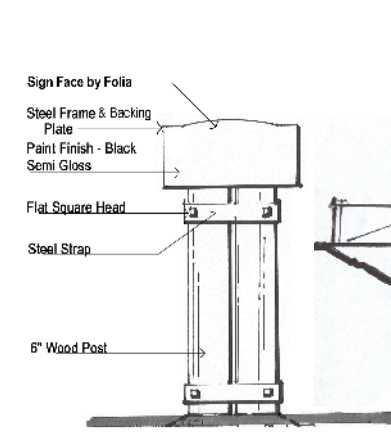
3 - Regulatory Signs



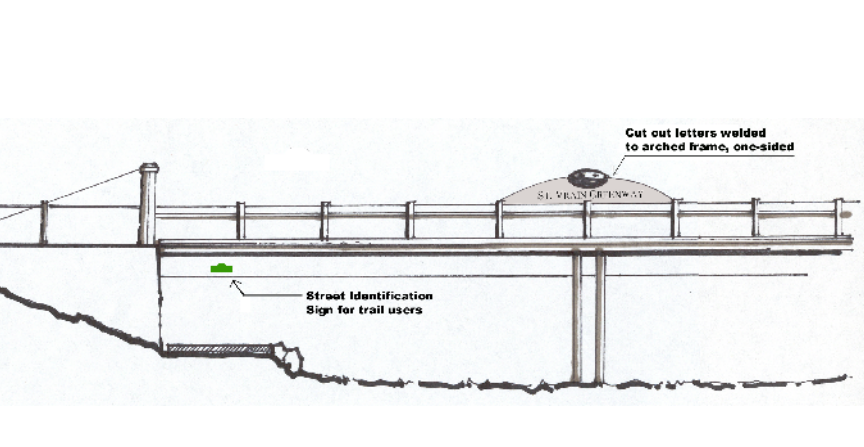
4 - Trail Marker



5 - Free Standing Park Sign



6 - Interpretive Signs



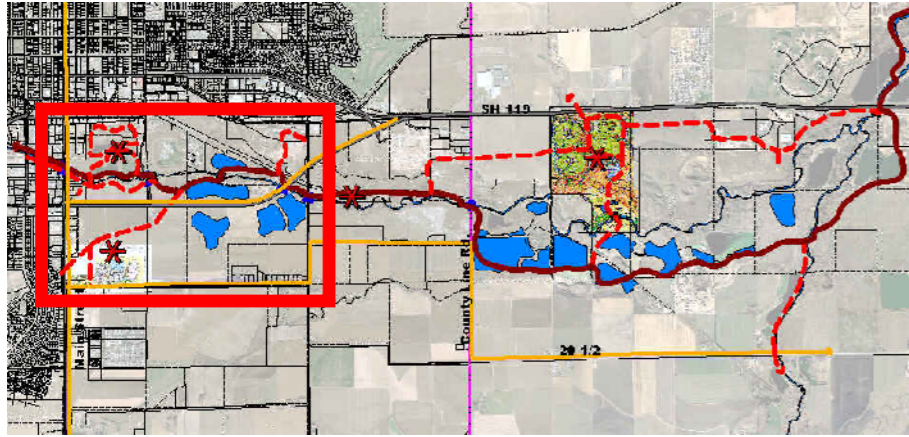
7 - Bridge Identity Sign



St. Vrain Greenway Master Plan








URBAN REACH

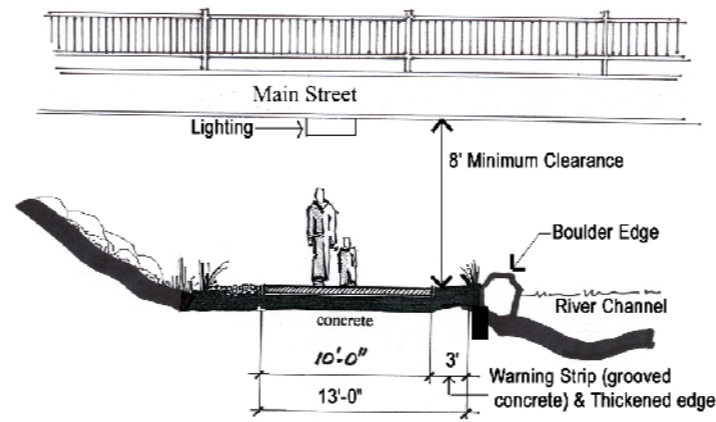
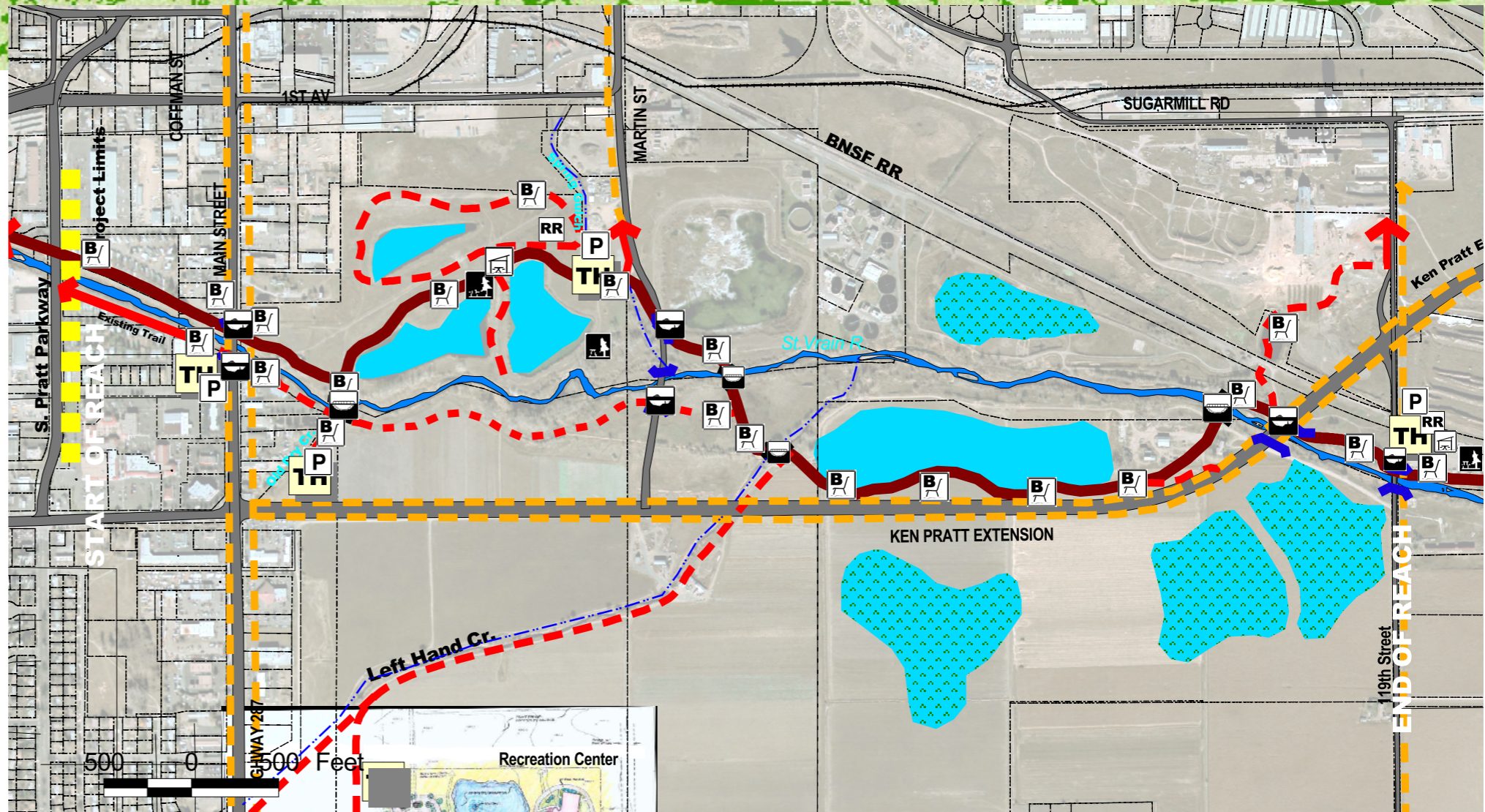
Design Elements



REGIONAL CONTEXT:

DESIGN ELEMENTS

-  Bench (1/4 mile in Urban and Suburban / 1/2 Mile in Rural / 3/8 Mile in Preserve) w/ Trash Receptacle
-  Bridge w/ Trash Receptacle
-  Shelter / Picnic Structure w/ Trash Receptacle
-  Trailhead / Parking w/ Trash Receptacle
-  Underpass (Lighted) w/ Trash Receptacle & High Water Gates
-  Picnic Area w/Trash Receptacle
-  Rest Rooms



Underpass Section



St. Vrain Greenway Master Plan