

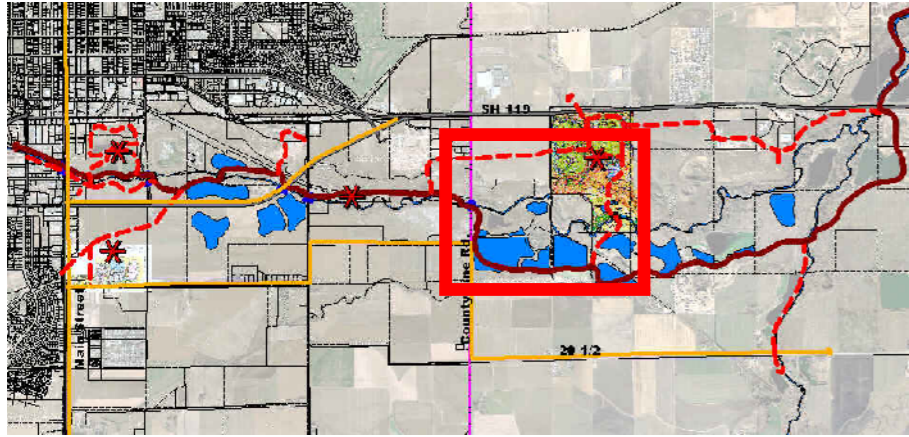
Rural Reach



County Line Road to Sandstone Ranch

RURAL REACH

Design Concept



REGIONAL CONTEXT:

ACTIVITY CENTER

TRAILHEAD PARKING

POCKET PARK

EDUCATION CENTER

Greenway Through Trail

Secondary Trail

Bike Path & On-street Lanes

Trail Underpass

GREENWAY STORIES:

Local History

Environmental

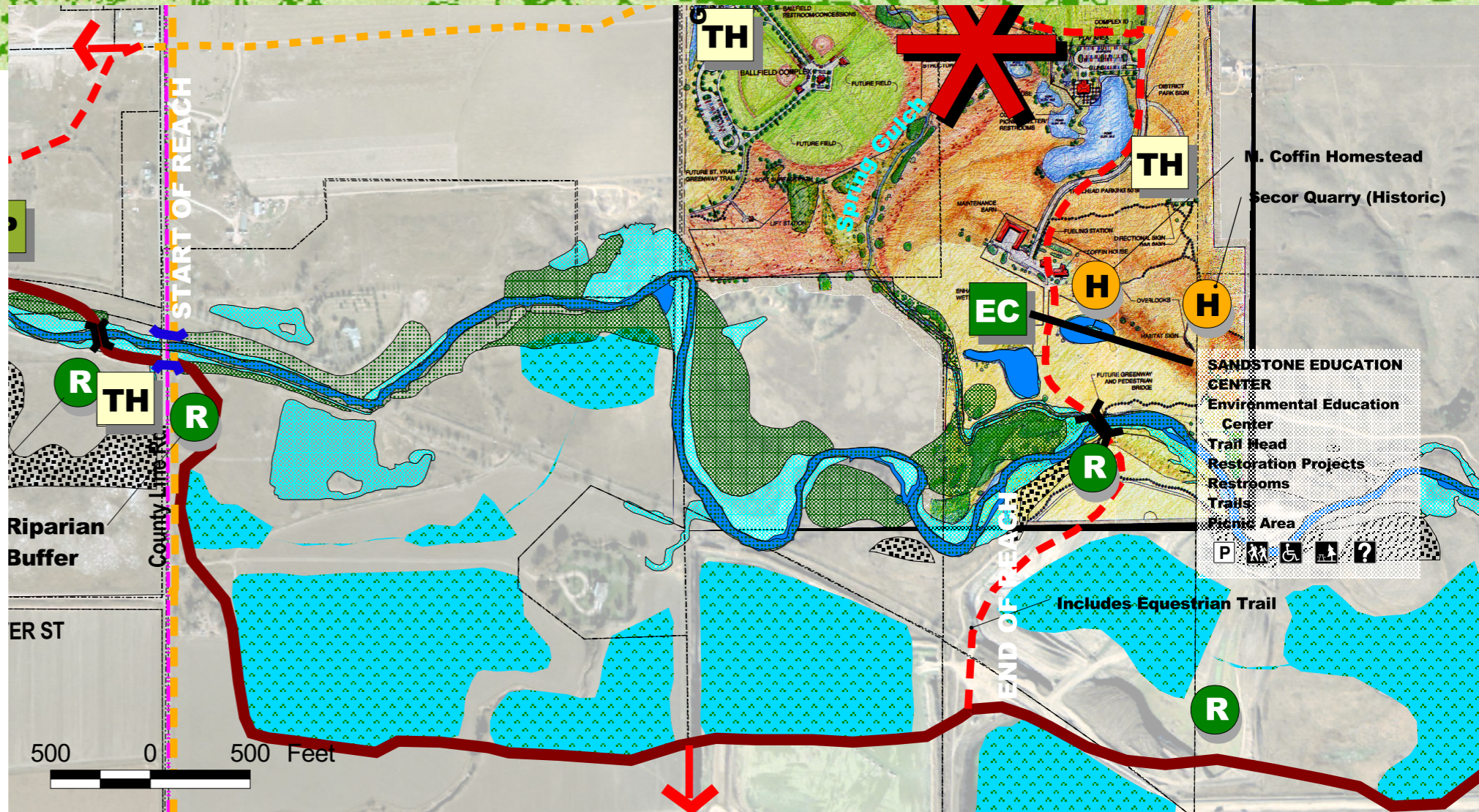
preservation / reclamation / restoration
water cycle / wildlife /

Wetlands

Riparian

Mixed Riparian

Prairiedogs



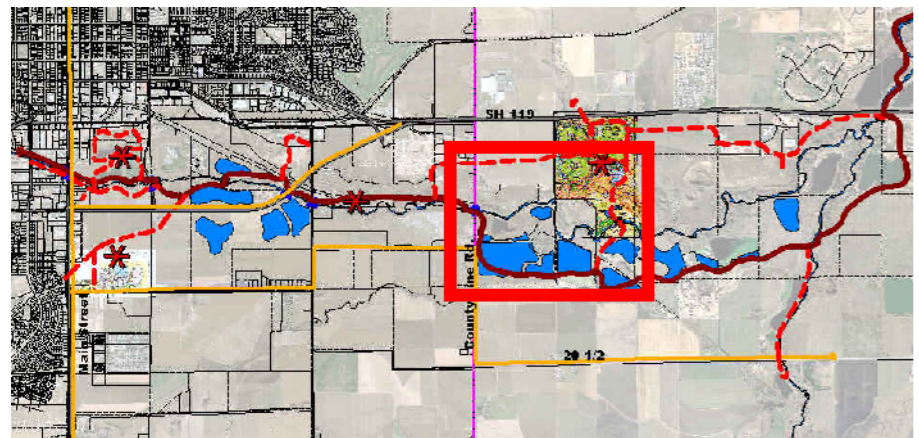
The Rural Reach is a transition area to the environmentally sensitive Preserve zone on the eastern end of the study area. The trails should move away from the River Corridor to provide a 1/4-mile buffer. It is important that residential or other intensive uses not be allowed to occur between the trail and the River. Social trails between the River and adjacent land uses should be controlled and trail users need to stay on the constructed trails.

The secondary trail to Sandstone Ranch crosses the St. Vrain River at an area with minimal environmental impact. As the trailhead in Sandstone Ranch has equestrian accommodations, the secondary trail from Sandstone Ranch will have the addition of an equestrian trail.



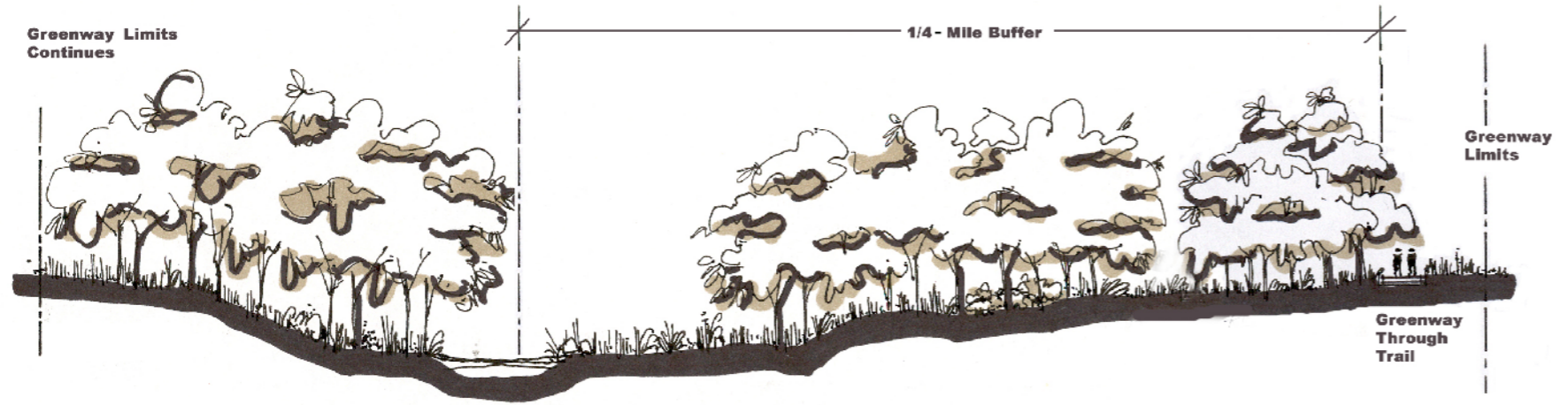
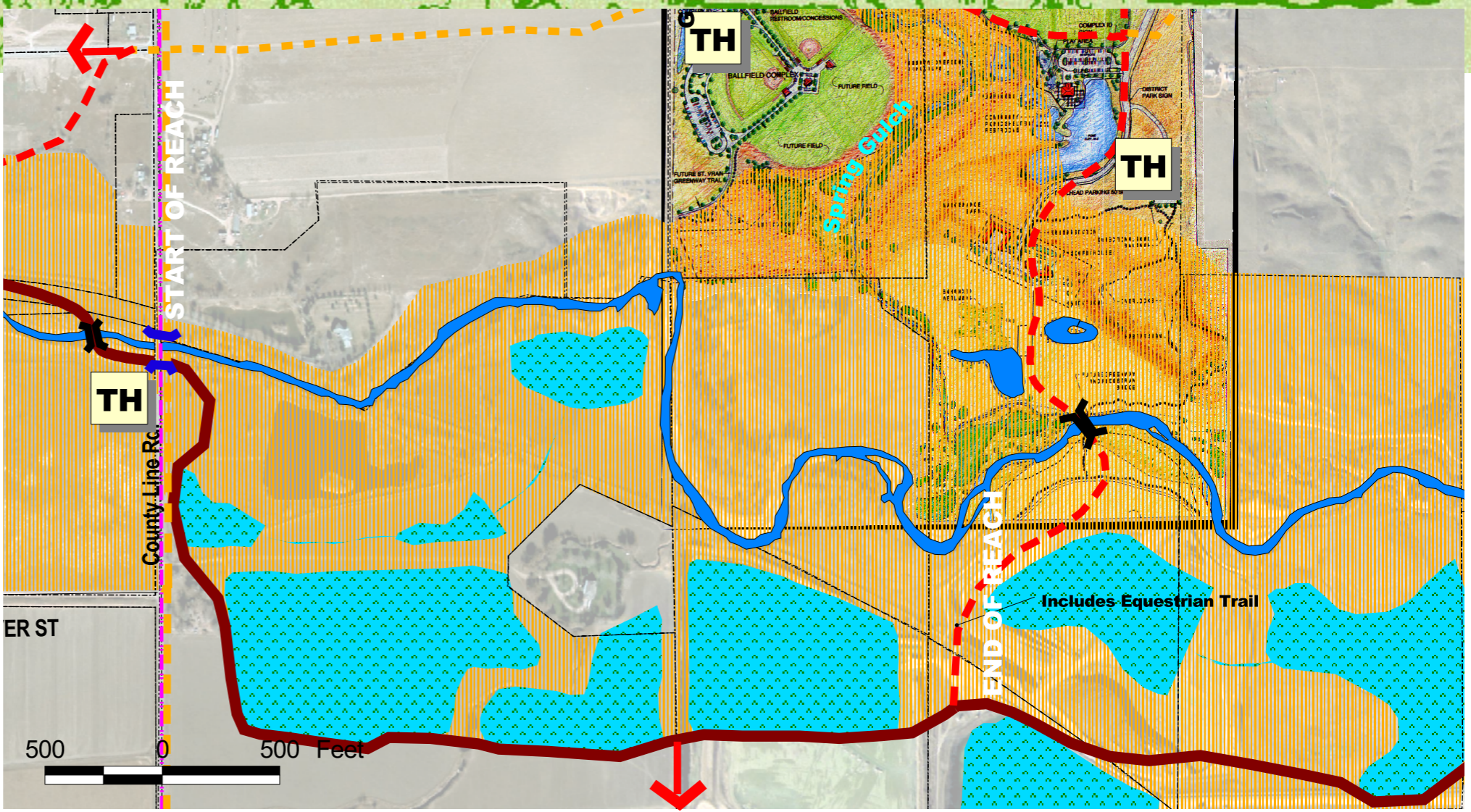
RURAL REACH

Greenway Corridor



REGIONAL CONTEXT:

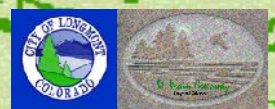
 Greenway Corridor



RURAL CORRIDOR

- Relatively Undisturbed Corridor
- High Quality Wildlife Habitat
- Limited Pedestrian Access

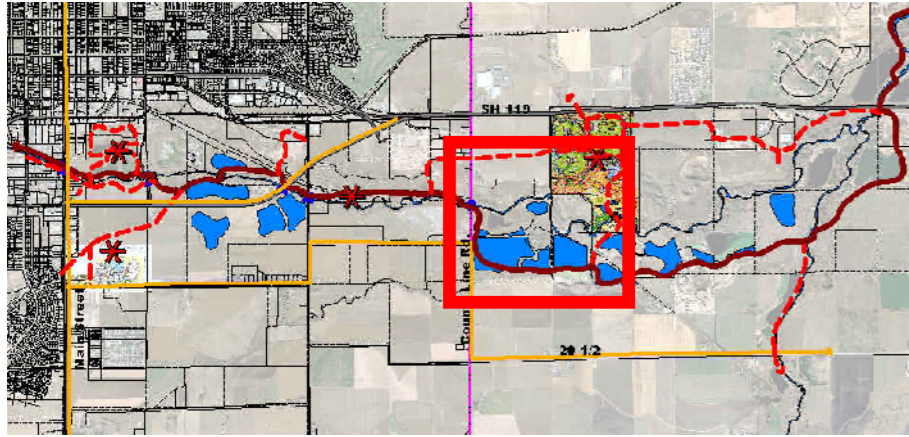
The width of the Corridor needs to be adequate to protect the resource, as well as respond to activity areas and resource constraints along the Greenway. As the Corridor starts to widen, control of the activities between the trail and the river need to be managed to protect the resource values. Protection strategies such as conservation easements and acquisition of development rights should be considered along with fee simple purchase to obtain the protection necessary.



St. Vrain Greenway Master Plan

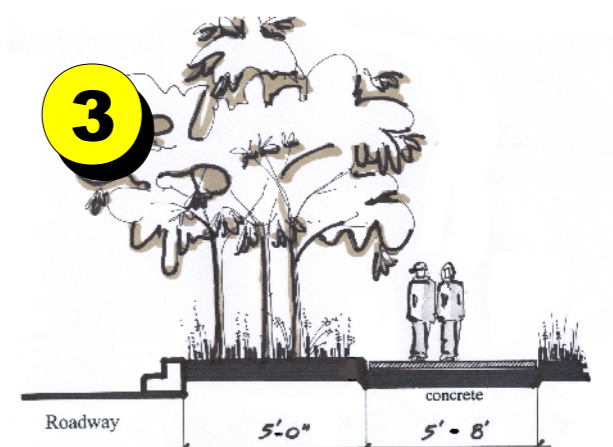
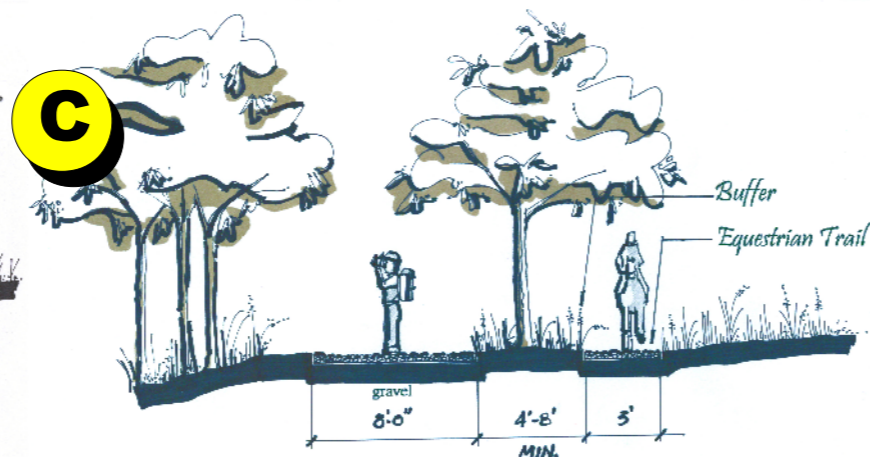
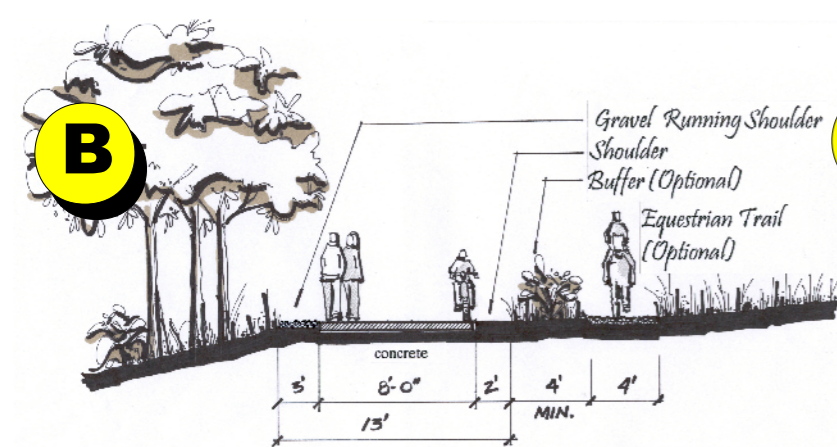
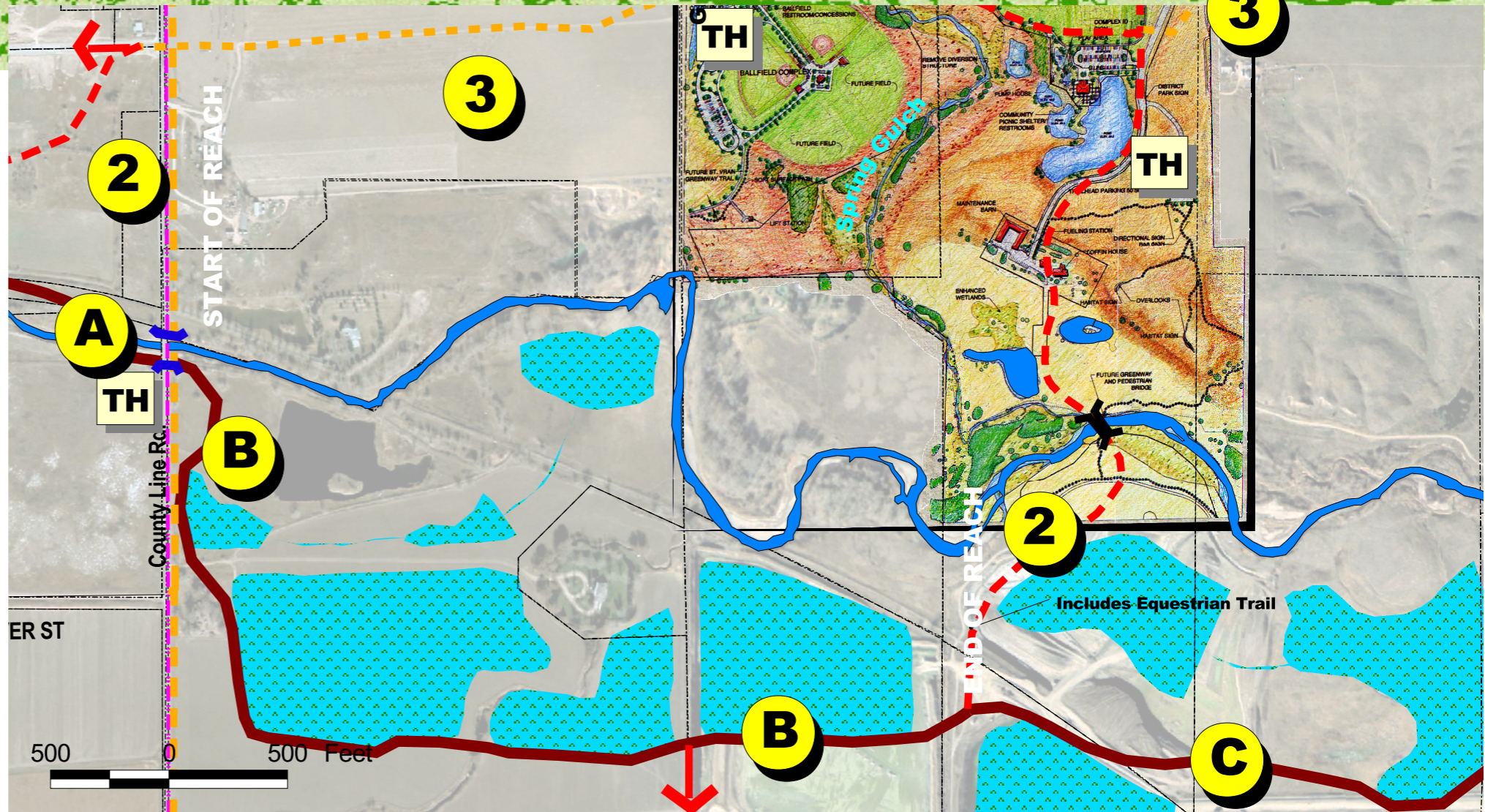
RURAL REACH

Trail System



REGIONAL CONTEXT:

- Greenway Through Trails
- Primary Greenway and Park Trails
- Roadway Trails
- Trailhead (Parking)
- Neighborhood Connections



Rural Through Trail

Preserve Through Trail

Greenway Trail / Park Trail

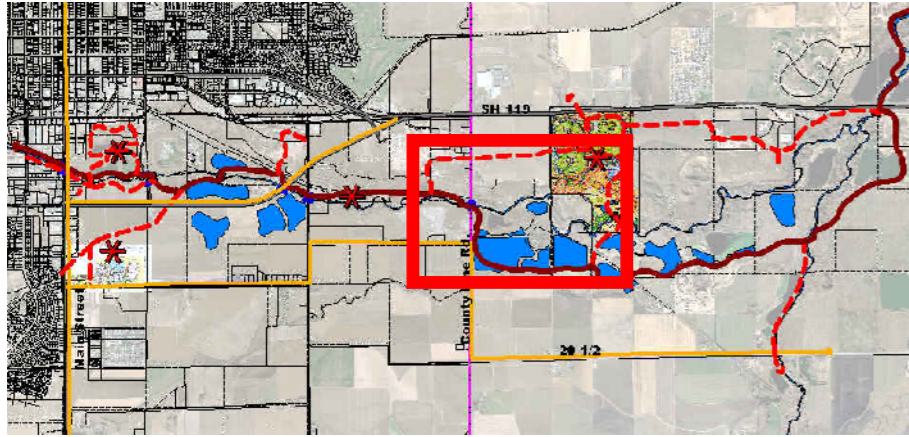
Bypass Route

St. Vrain Greenway Master Plan



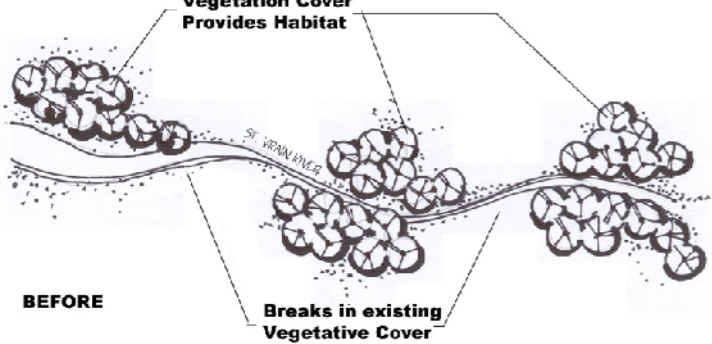
RURAL REACH

Restoration Potential



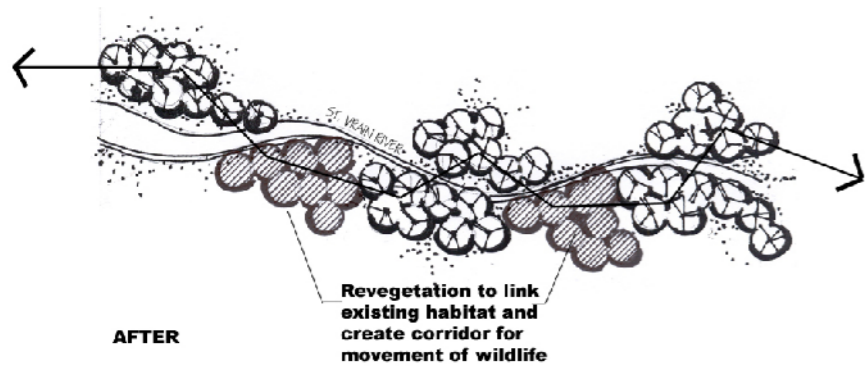
REGIONAL CONTEXT:

Restoration Potential, Highest
Vegetation Cover
Provides Habitat



BEFORE

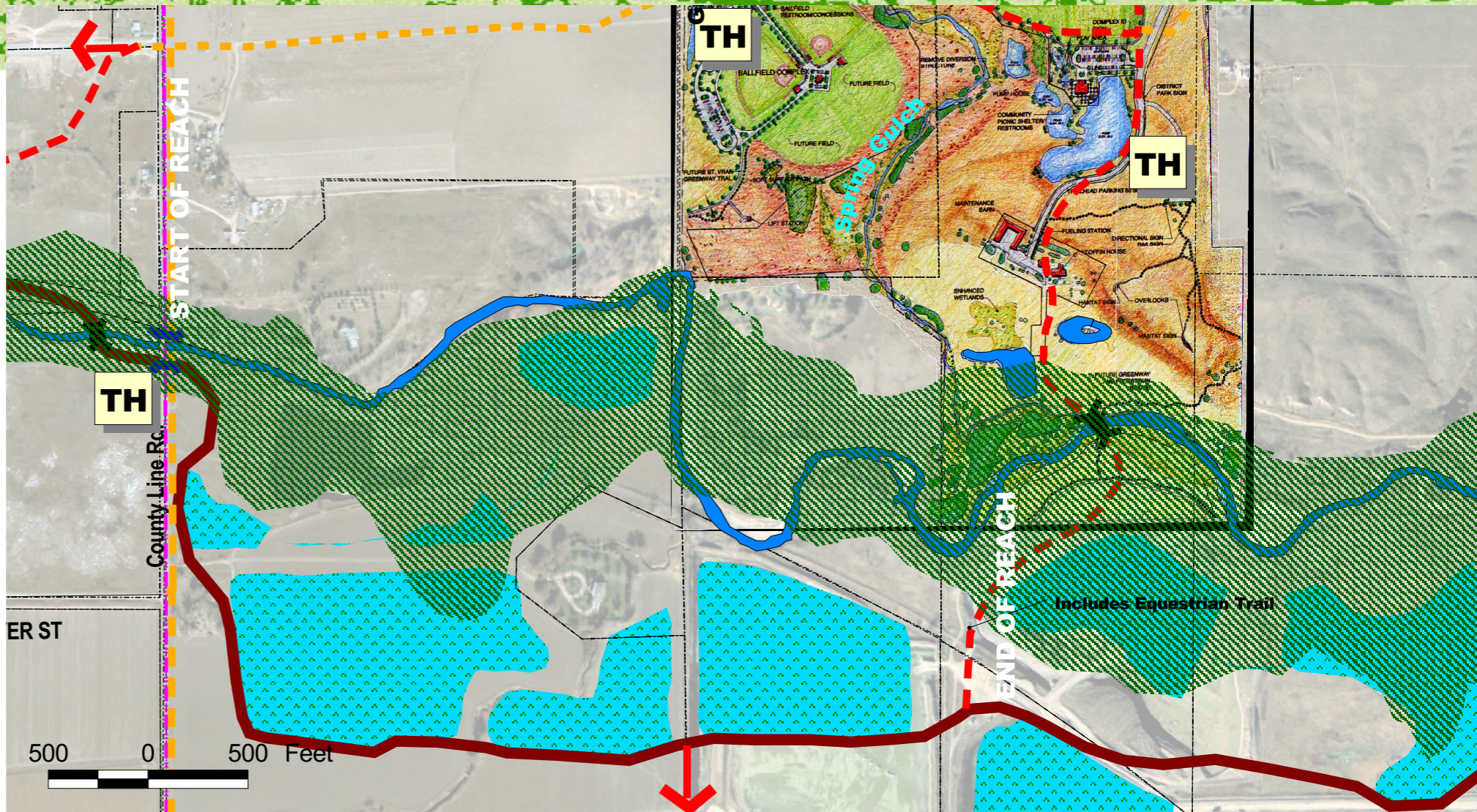
Breaks in existing
Vegetative Cover



AFTER

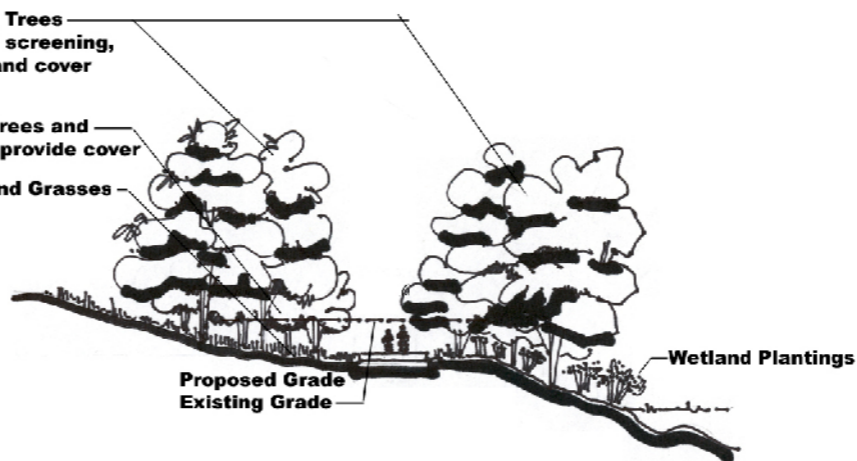
Revegetation to link
existing habitat and
create corridor for
movement of wildlife

REVEGETATION PLANS



Canopy Trees
Provide screening,
shade and cover

Small Trees and
Shrubs provide cover
Forbs and Grasses



Proposed Grade
Existing Grade

Wetland Plantings

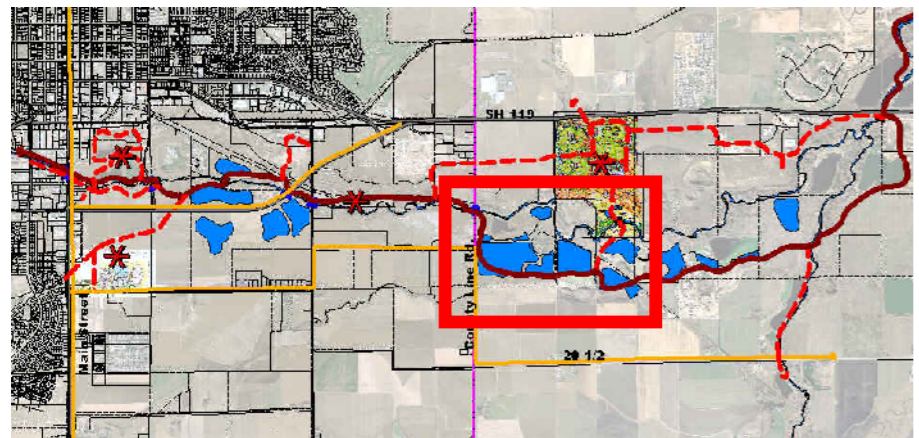
SECTION: Elements of Vegetation



St. Vrain Greenway Master Plan

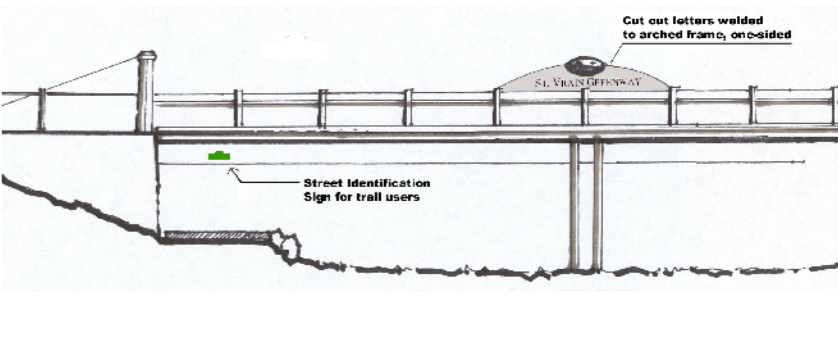
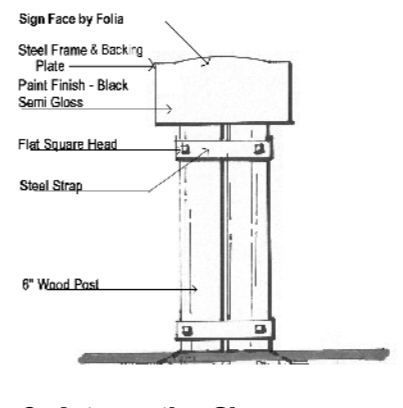
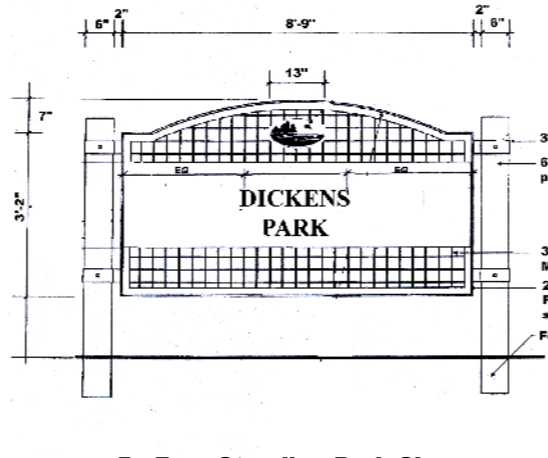
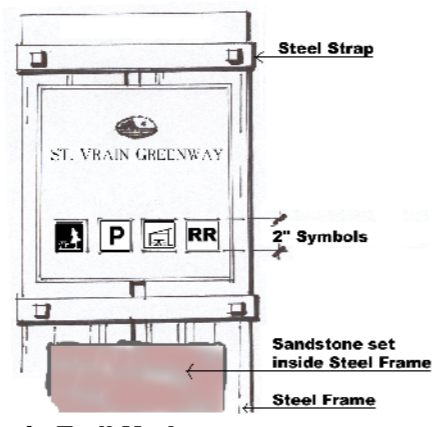
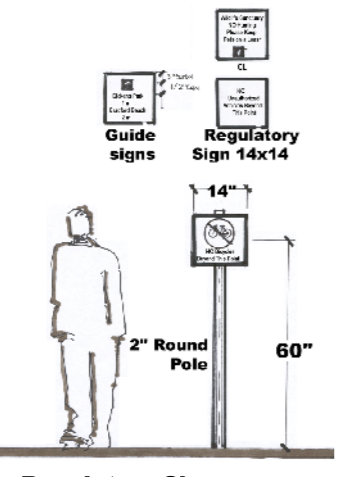
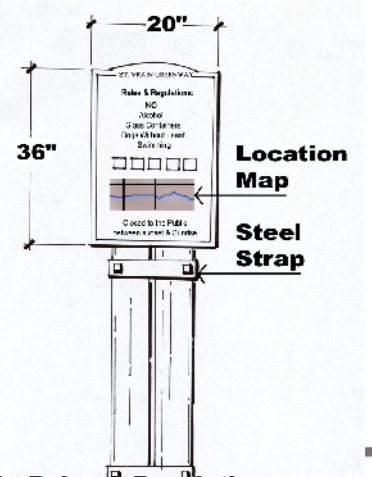
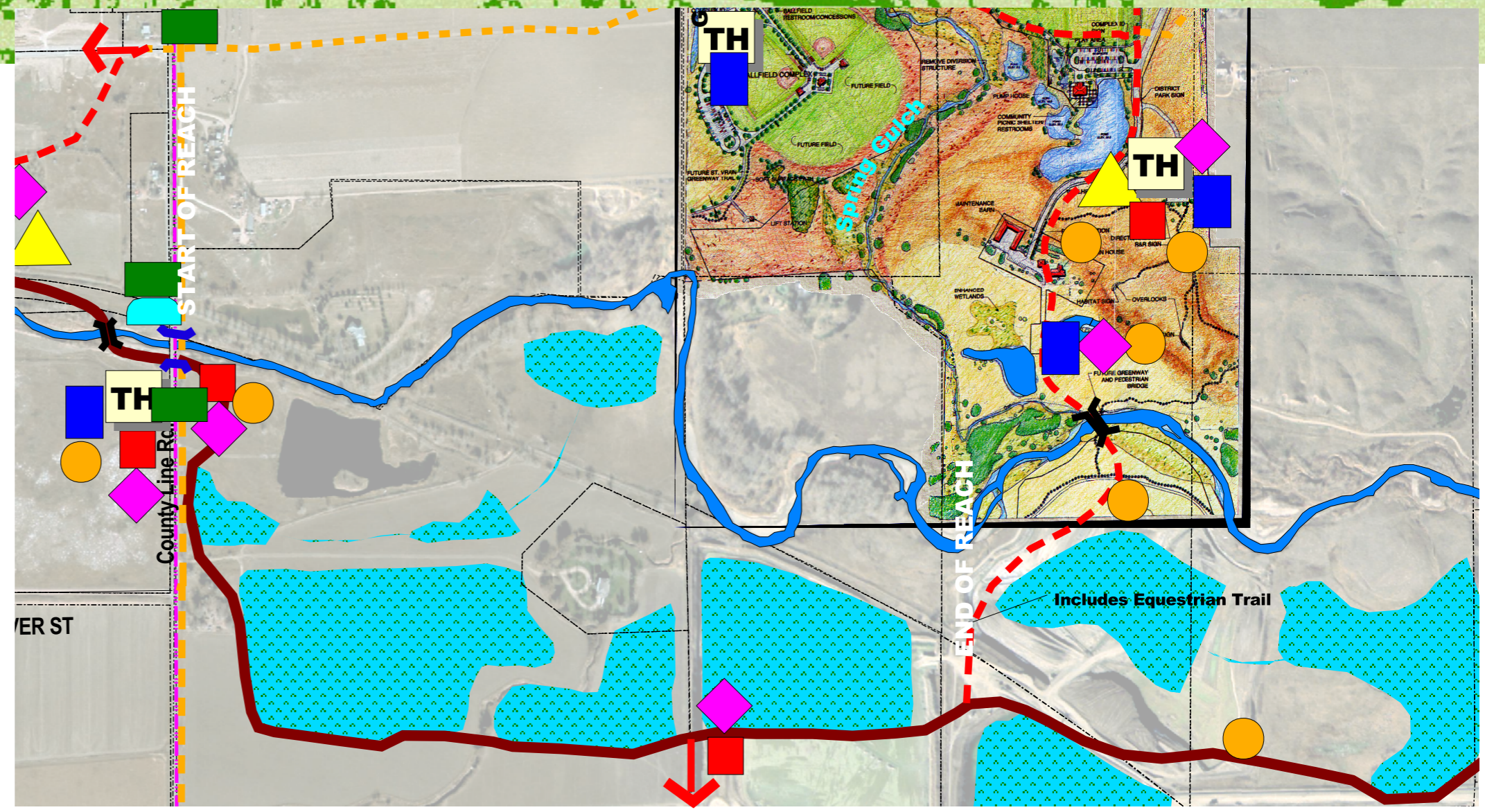
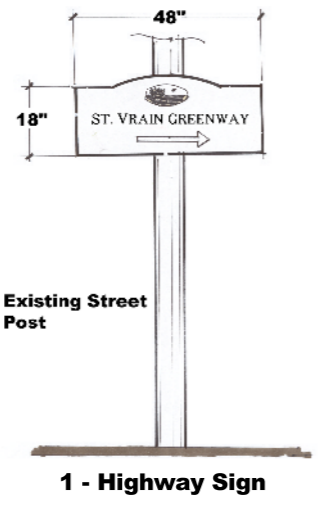
RURAL REACH

Signage Strategy



REGIONAL CONTEXT:

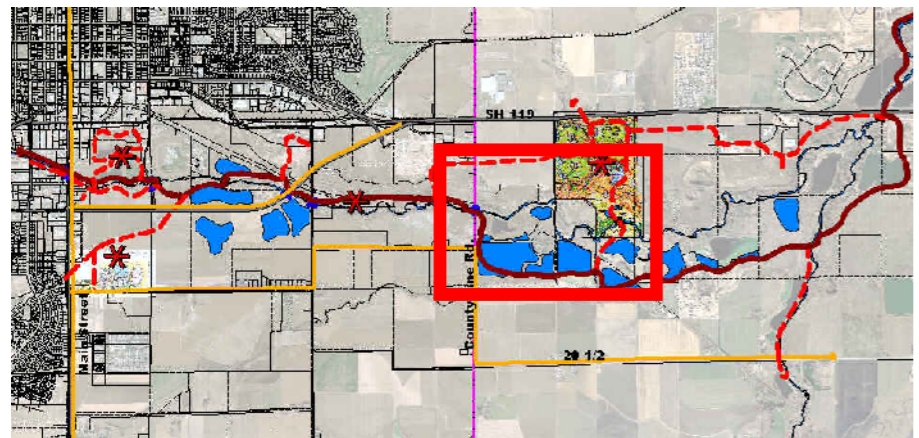
- 1 - Highway Sign
- 2 - Rules & Regulations
- 3 - Regulatory Signs
- ◆ 4 - Trail Marker
- ▲ 5 - Free Standing Park Sign
- 6 - Interpretive Signs
- ▭ 7 - Bridge Identity Sign



St. Vrain Greenway Master Plan

RURAL REACH

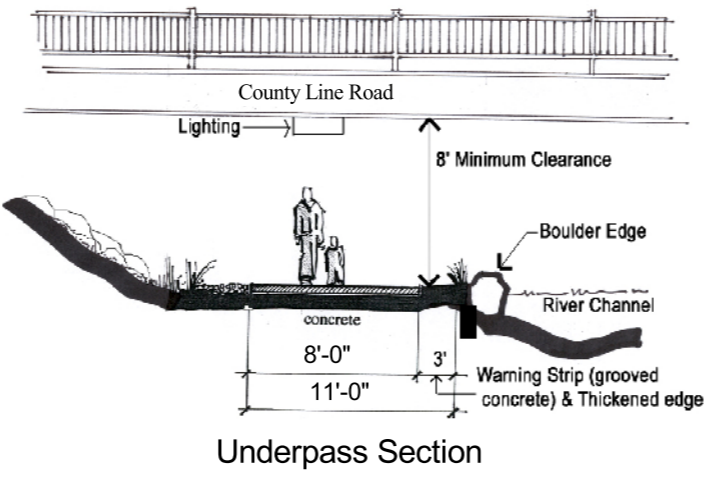
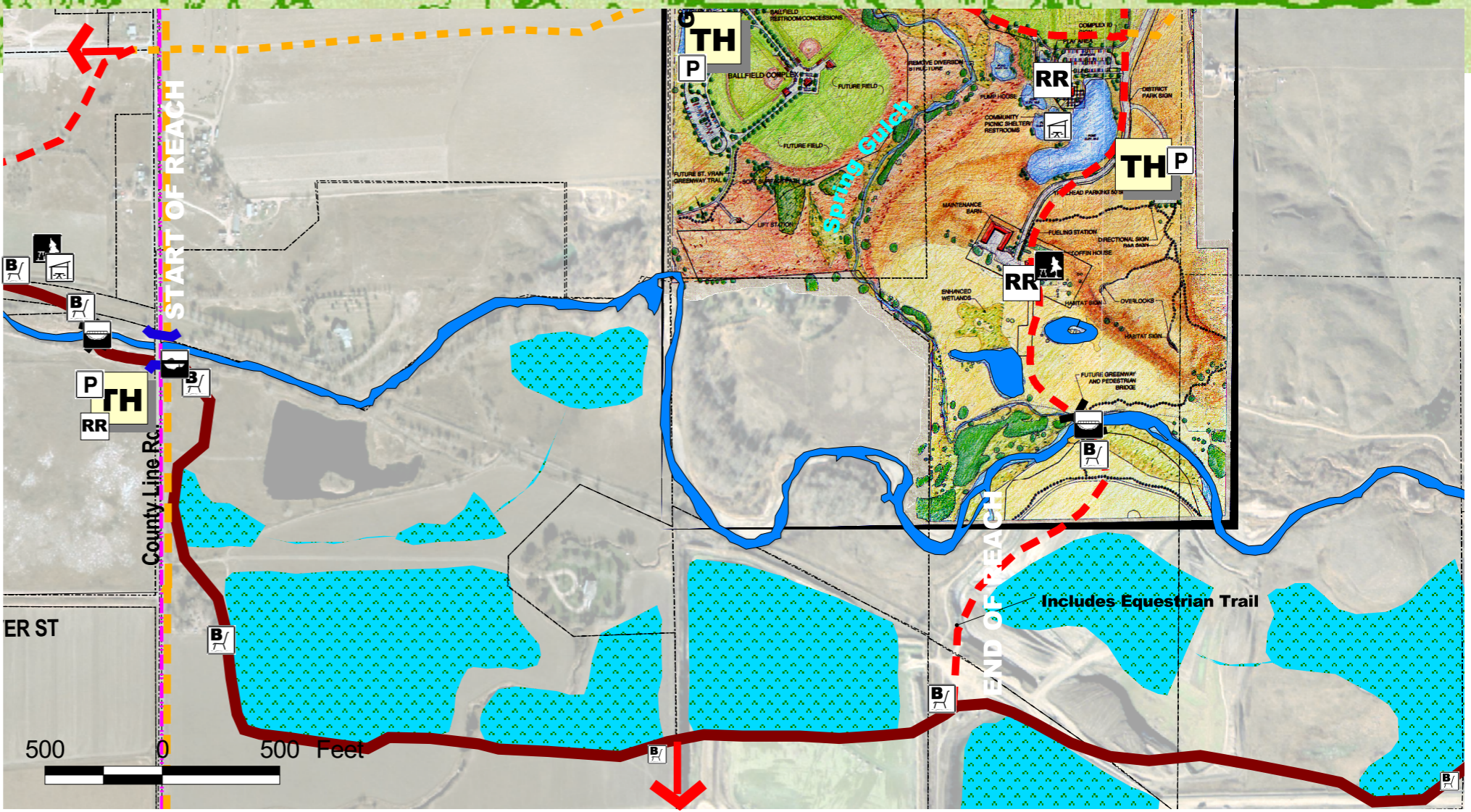
Design Elements



REGIONAL CONTEXT:

DESIGN ELEMENTS

- Bench (1/4 mile in Urban and Suburban / 1/2 Mile in Rural / 3/8 Mile in Preserve) w/ Trash Receptacle
- Bridge w/ Trash Receptacle
- Shelter / Picnic Structure w/ Trash Receptacle
- Trailhead / Parking w/ Trash Receptacle
- Underpass (Lighted) w/ Trash Receptacle & High Water Gates
- Picnic Area w/Trash Receptacle
- Rest Rooms



St. Vrain Greenway Master Plan