

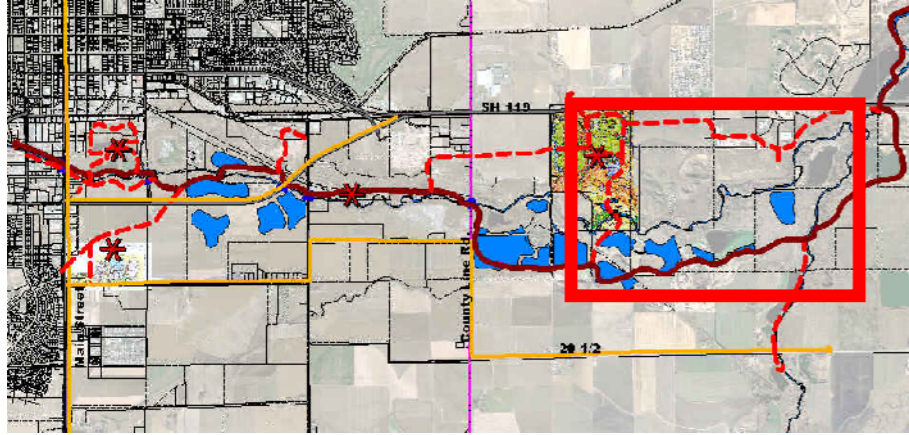
Preserve Reach



Sandstone Ranch to East Project Limits

PRESERVE REACH

Design Concept



REGIONAL CONTEXT:

ACTIVITY CENTER

TRAILHEAD PARKING

POCKET PARK

EDUCATION CENTER

Greenway Through Trail

Secondary Trail

Bike Path & On-street Lanes

Trail Underpass

GREENWAY STORIES:

Local History

Environmental

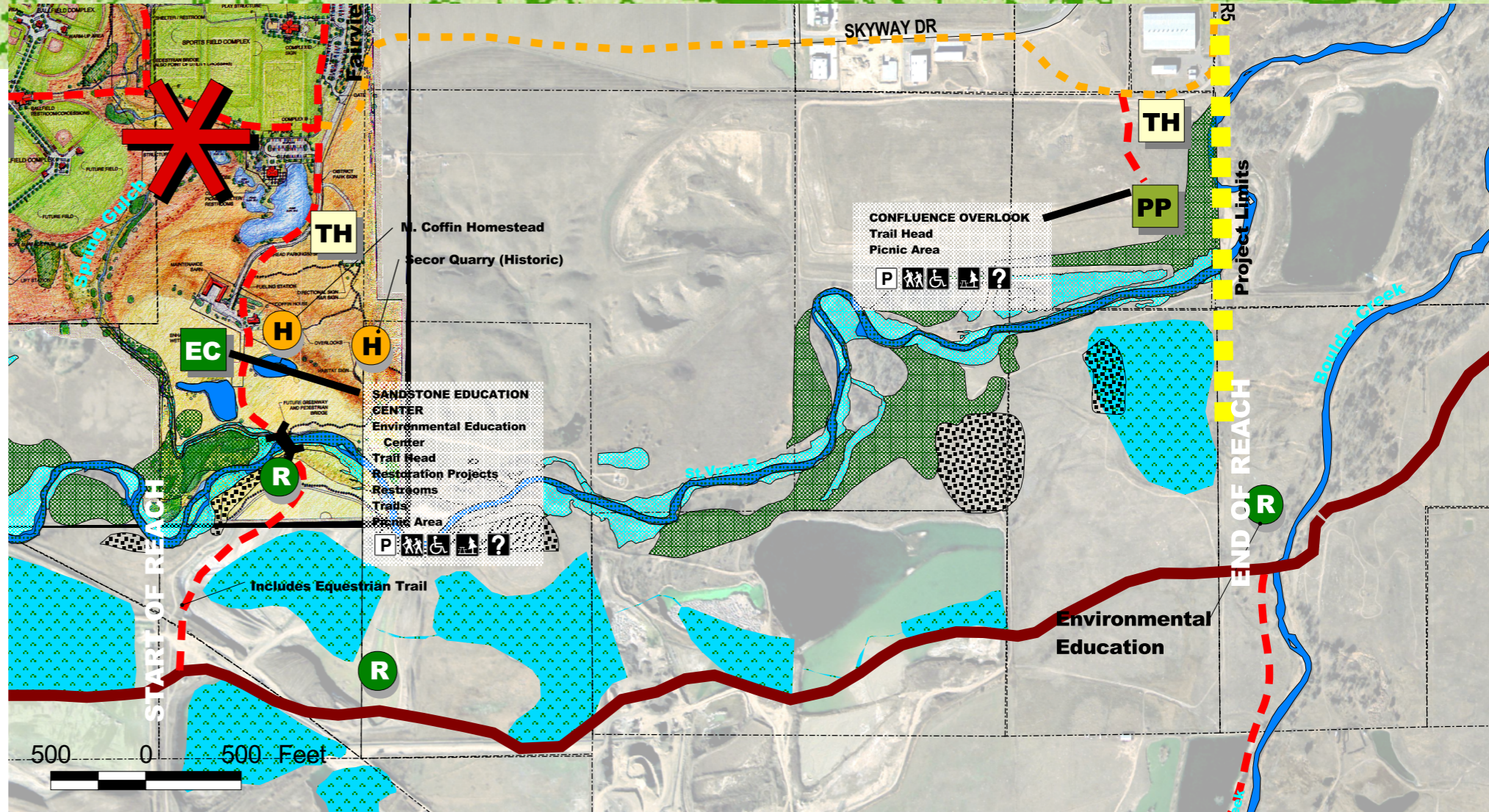
preservation / reclamation / restoration
water cycle / wildlife /

Wetlands

Riparian

Mixed Riparian

Prairiedogs

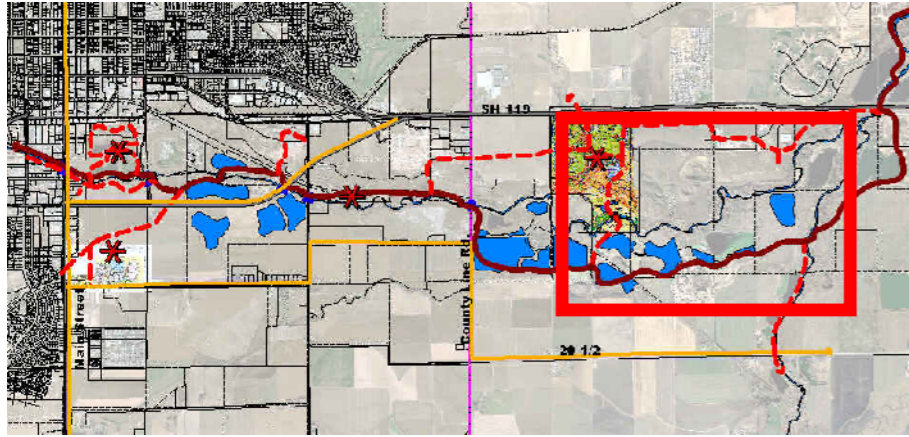


The Preserve Reach has the least active recreational use. This Reach includes significant environmental resources. River uses and trails that penetrate into sensitive portions of this area should not be encouraged. Special attention needs to be given to trail design to screen trail uses when in proximity of sensitive resources. The 1/4-mile buffer between the River and the trail needs to remain free of intensive uses such as residential. Social trail development is strongly discouraged.



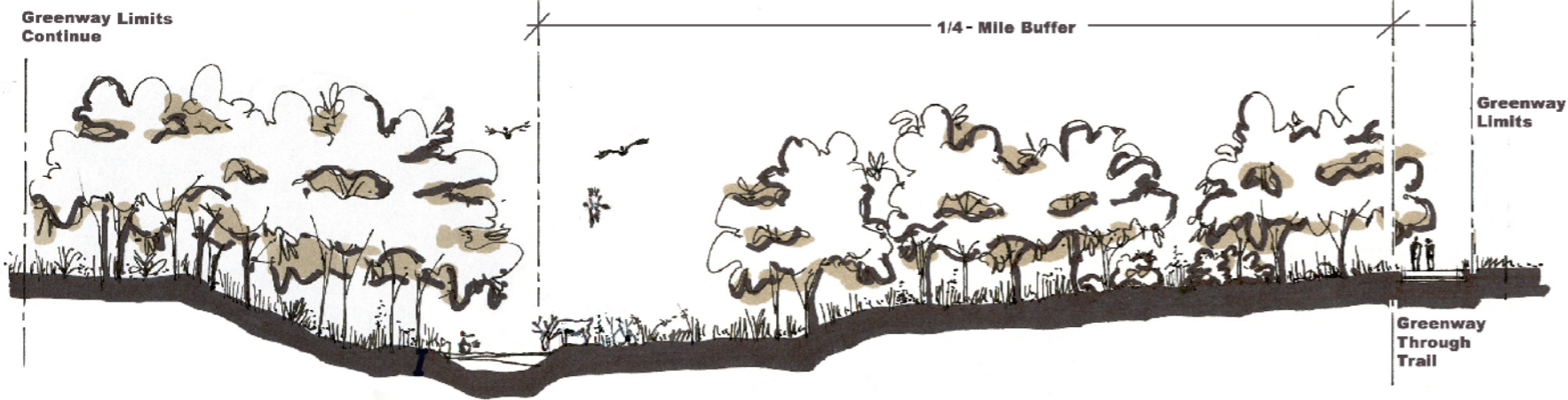
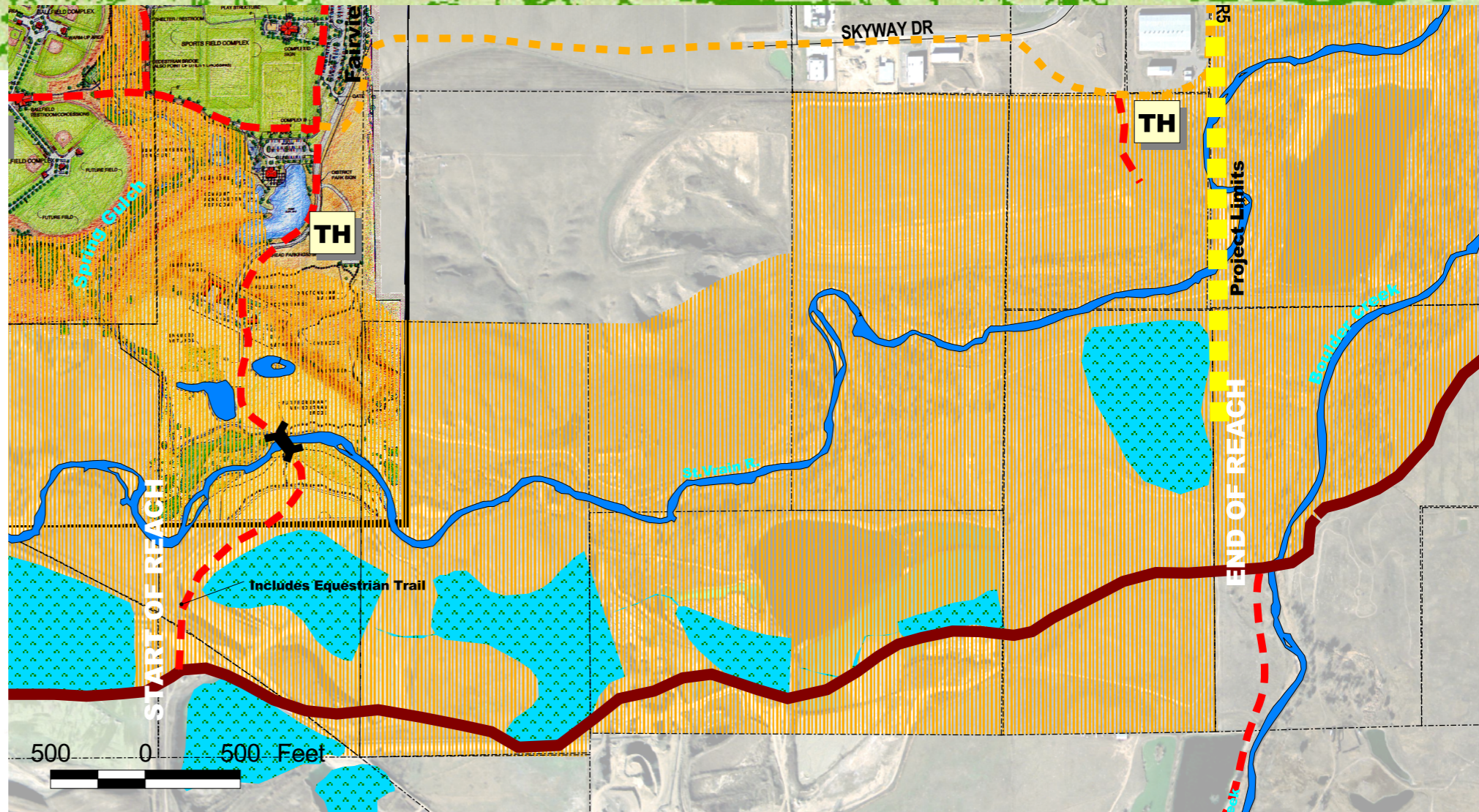
PRESERVE REACH

Greenway Corridor



REGIONAL CONTEXT:

 Greenway Corridor



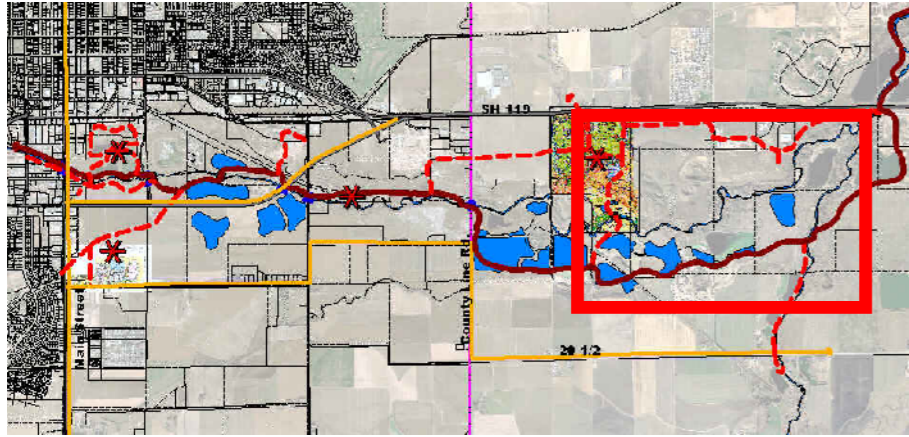
PRESERVE CORRIDOR

- Mostly Undisturbed
- High-Quality Wildlife Habitat
- Restricted Pedestrian Access

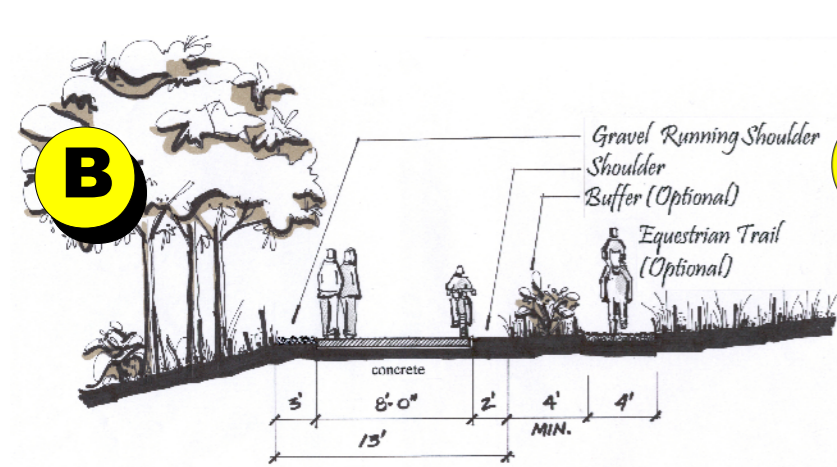
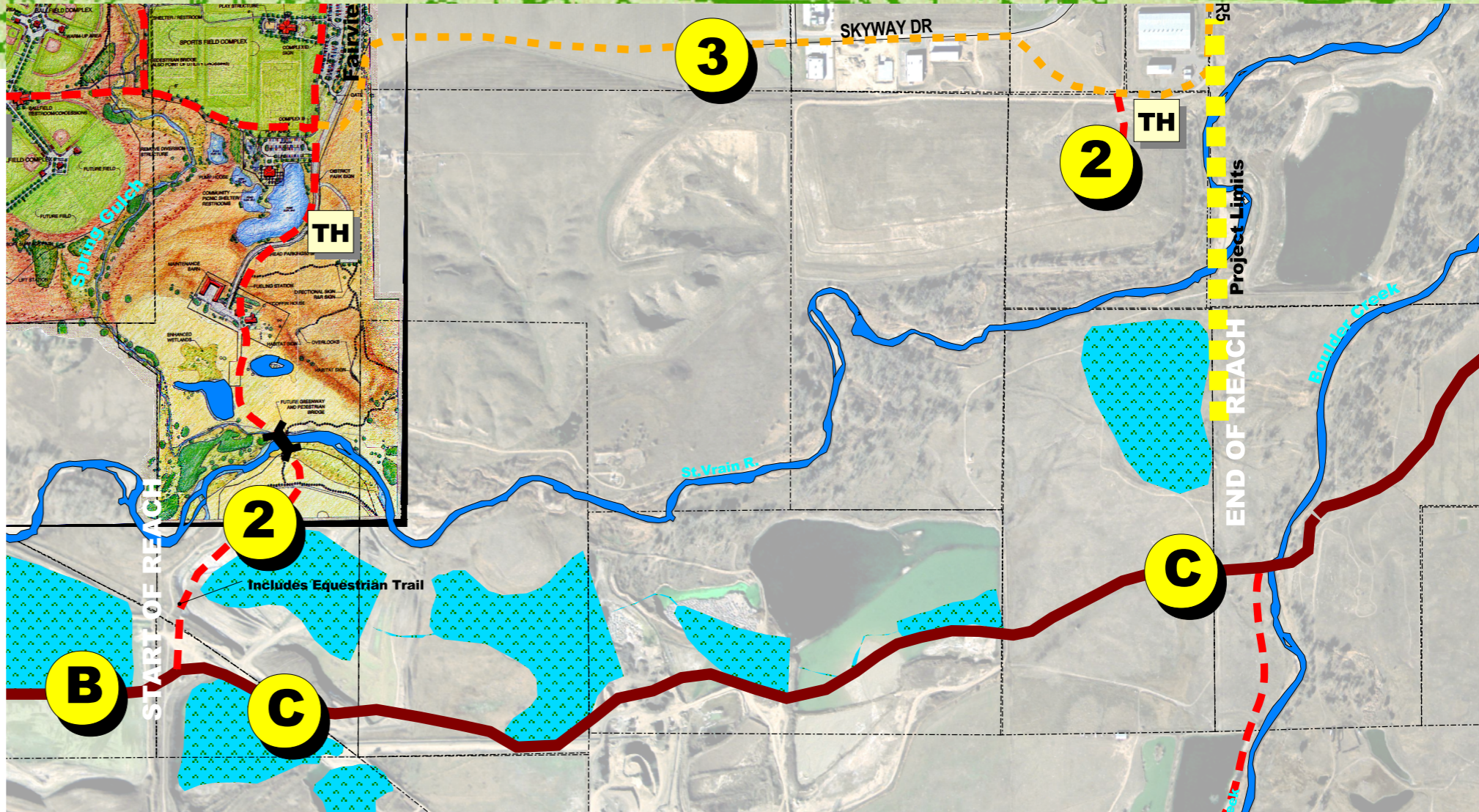
The width of the Corridor needs to be adequate to protect the resource, as well as respond to activity areas and resource constraints along the Greenway. In general, the Corridor width through this Reach should be sufficiently wide to buffer the sensitive resources along the River Corridor. This has been determined to be 1/4-mile from the St. Vrain. Active landuses should not be allowed between the trail corridor and the River.

PRESERVE REACH

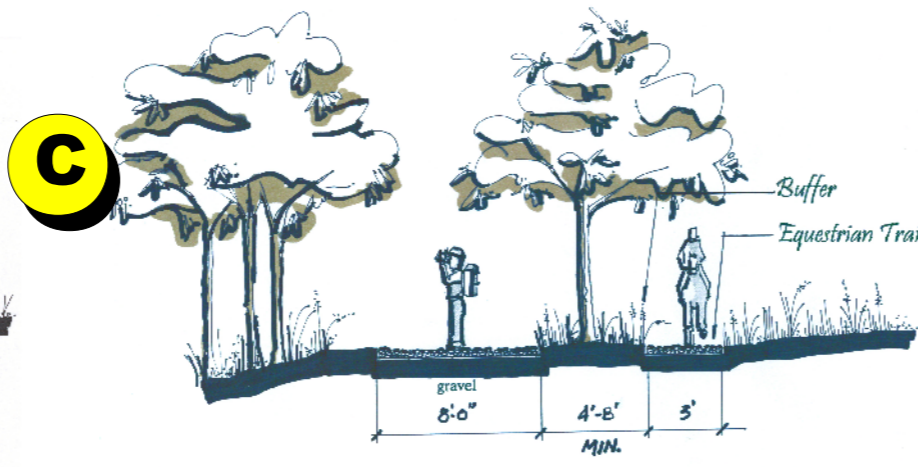
Trail System



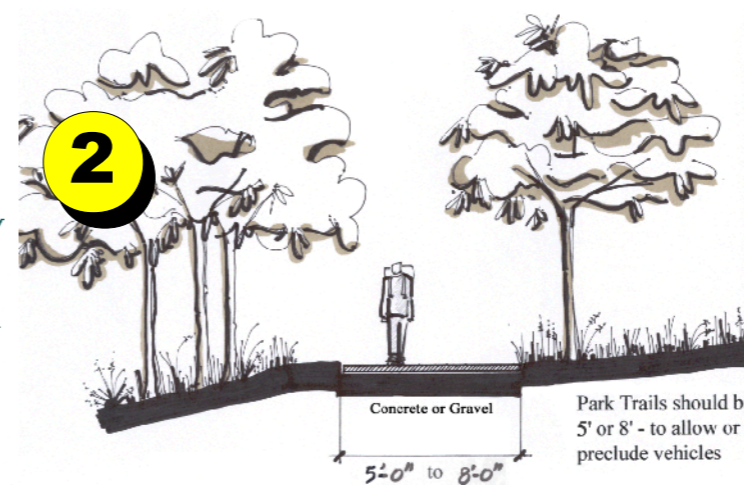
- Greenway Through Trails
- Primary Greenway and Park Trails
- Roadway Trails
- Trailhead (Parking)
- Neighborhood Connections



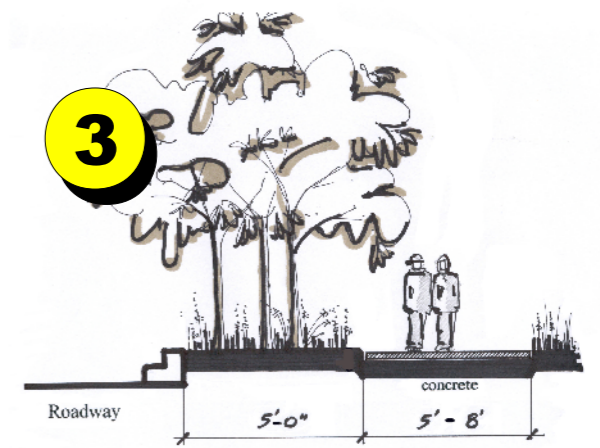
Rural Through Trail



Preserve Through Trail



Greenway Trail / Park Trail



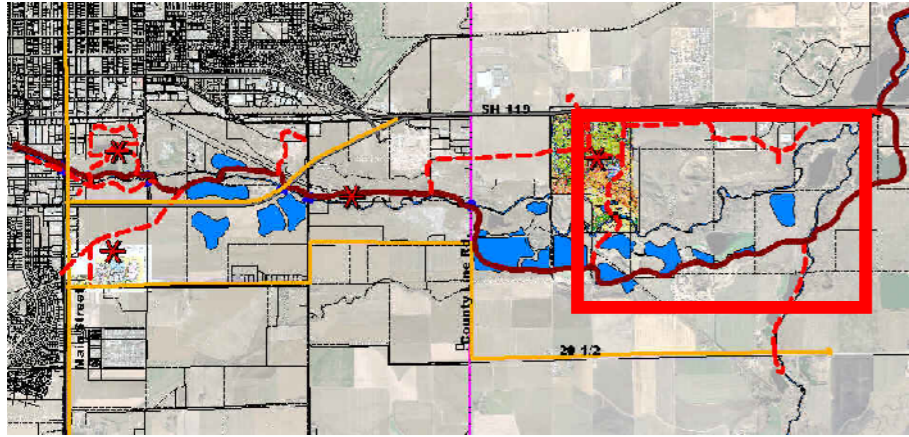
Bypass Route



St. Vrain Greenway Master Plan

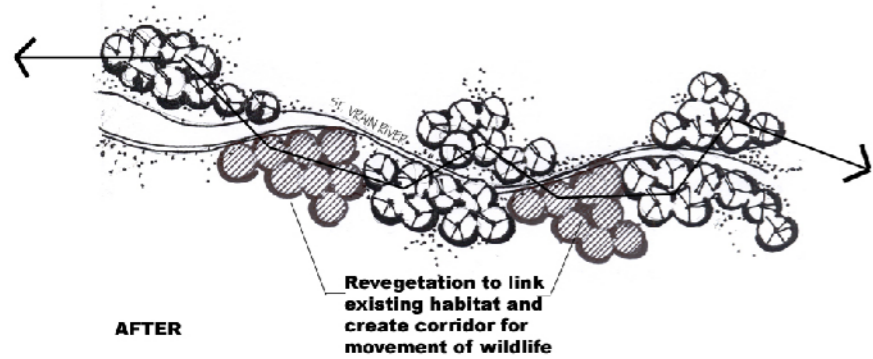
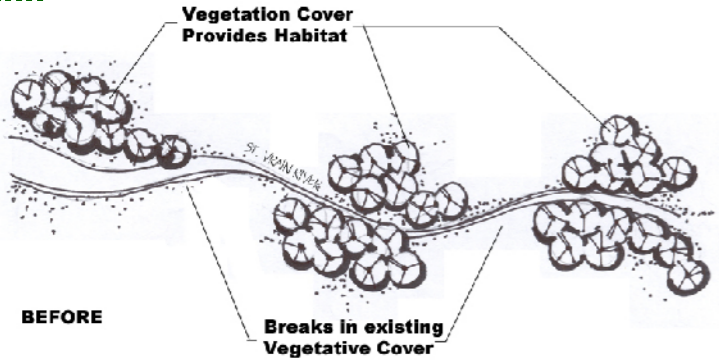
PRESERVE REACH

Restoration Potential

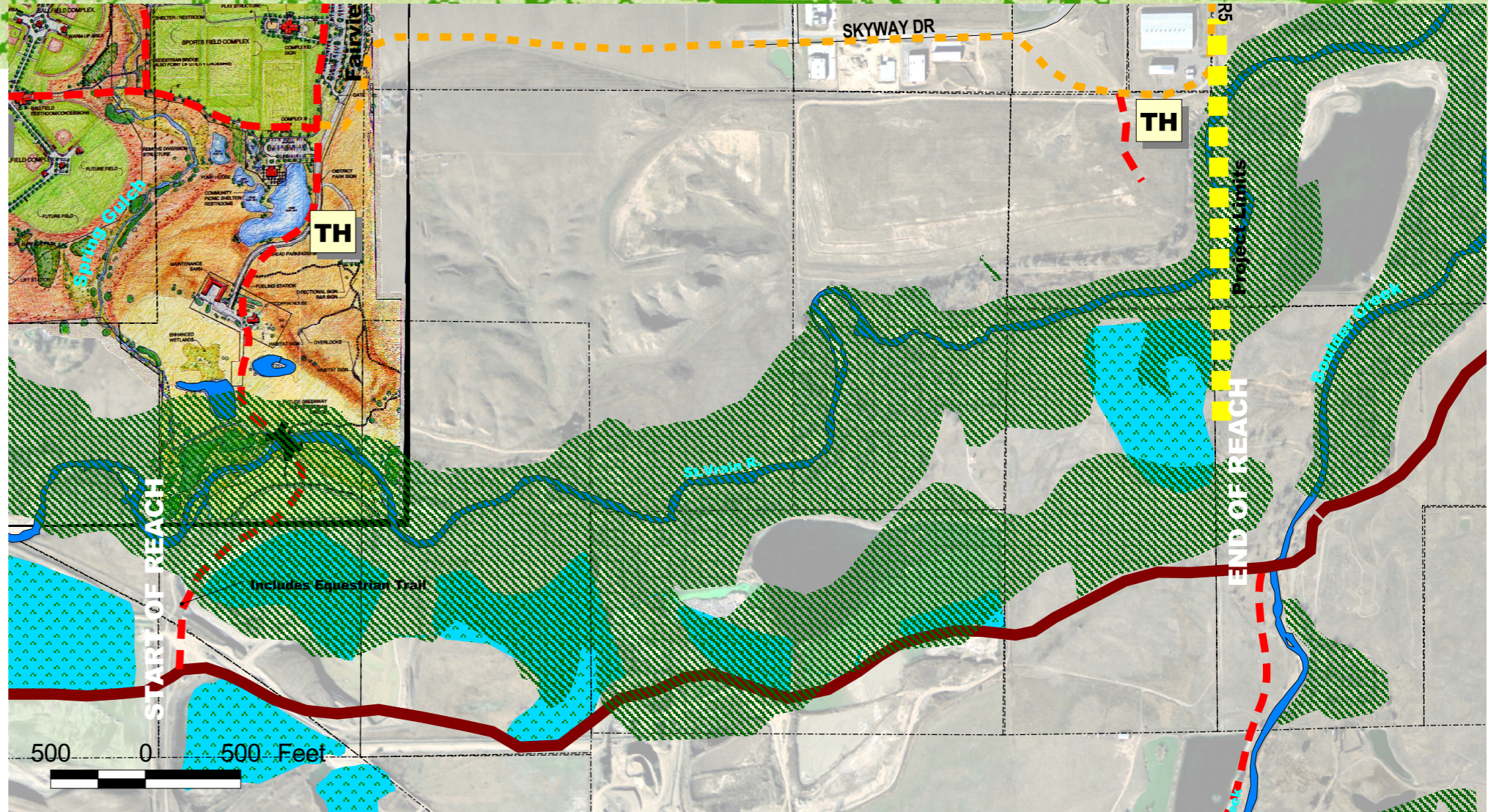


REGIONAL CONTEXT:

Restoration Potential, Highest

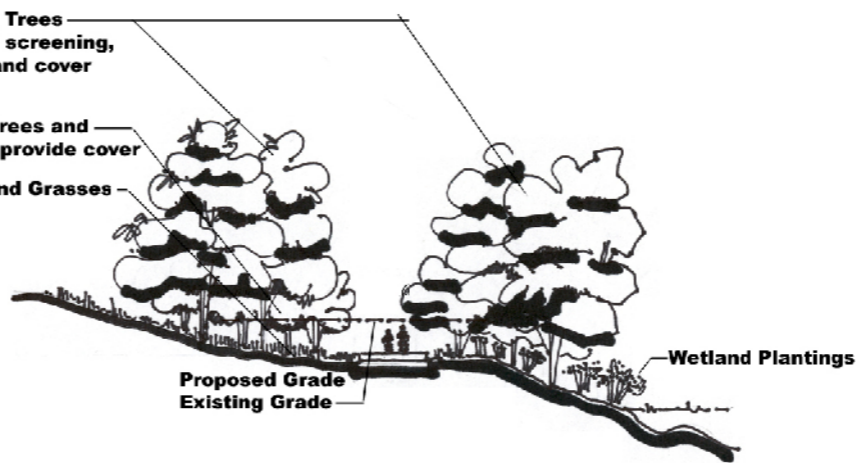


REVEGETATION PLANS



Canopy Trees
Provide screening,
shade and cover

Small Trees and
Shrubs provide cover
Forbs and Grasses



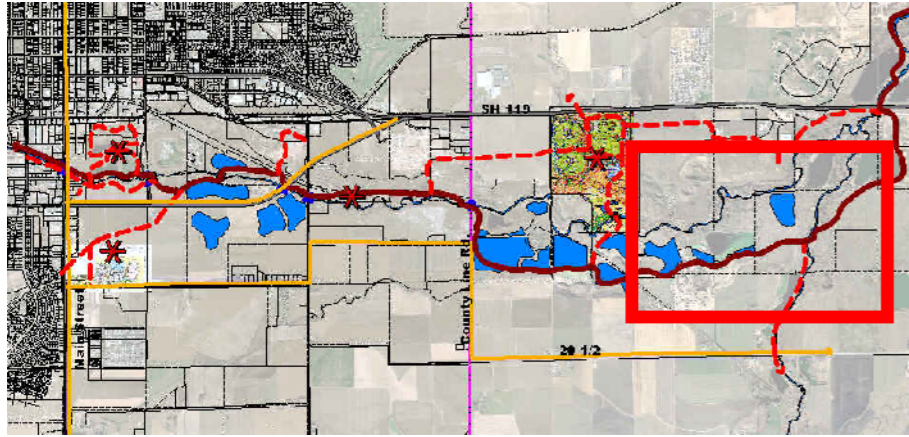
SECTION: Elements of Vegetation



St. Vrain Greenway Master Plan

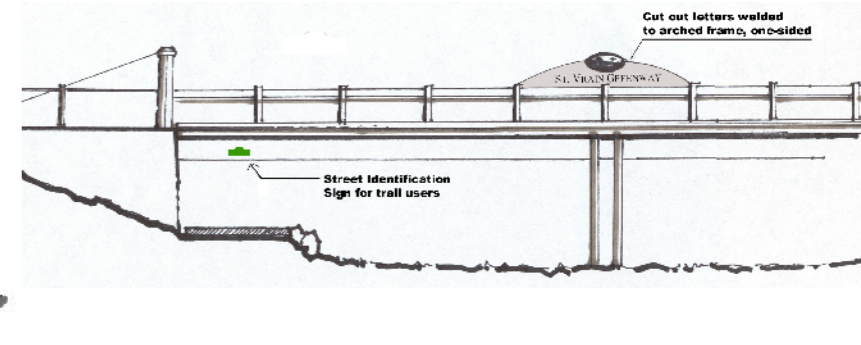
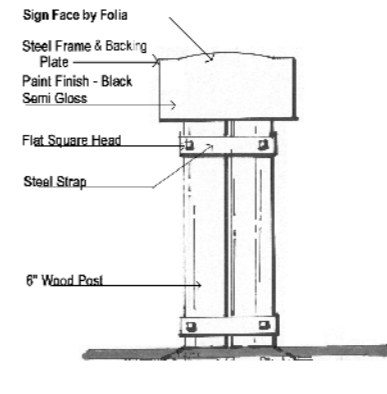
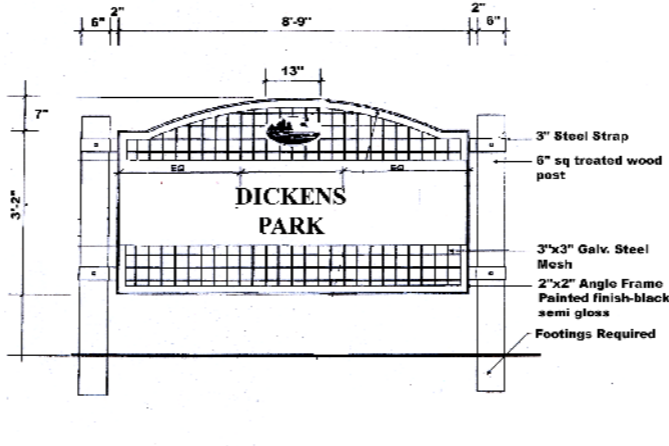
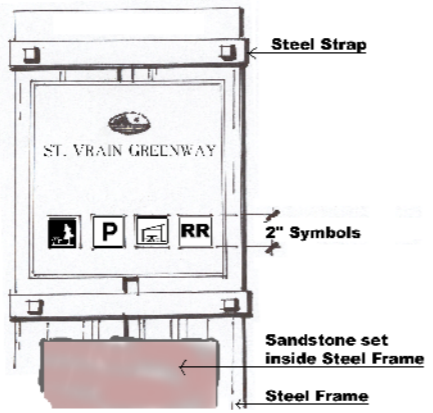
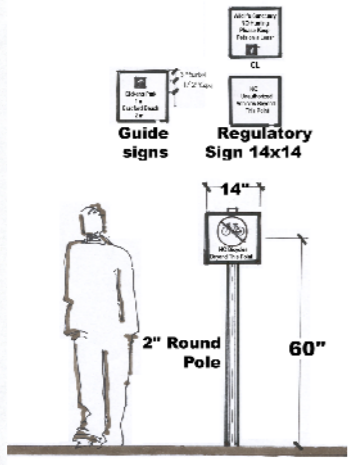
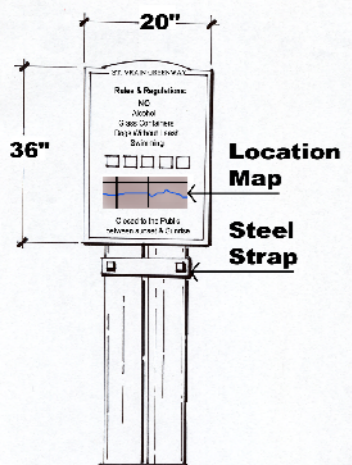
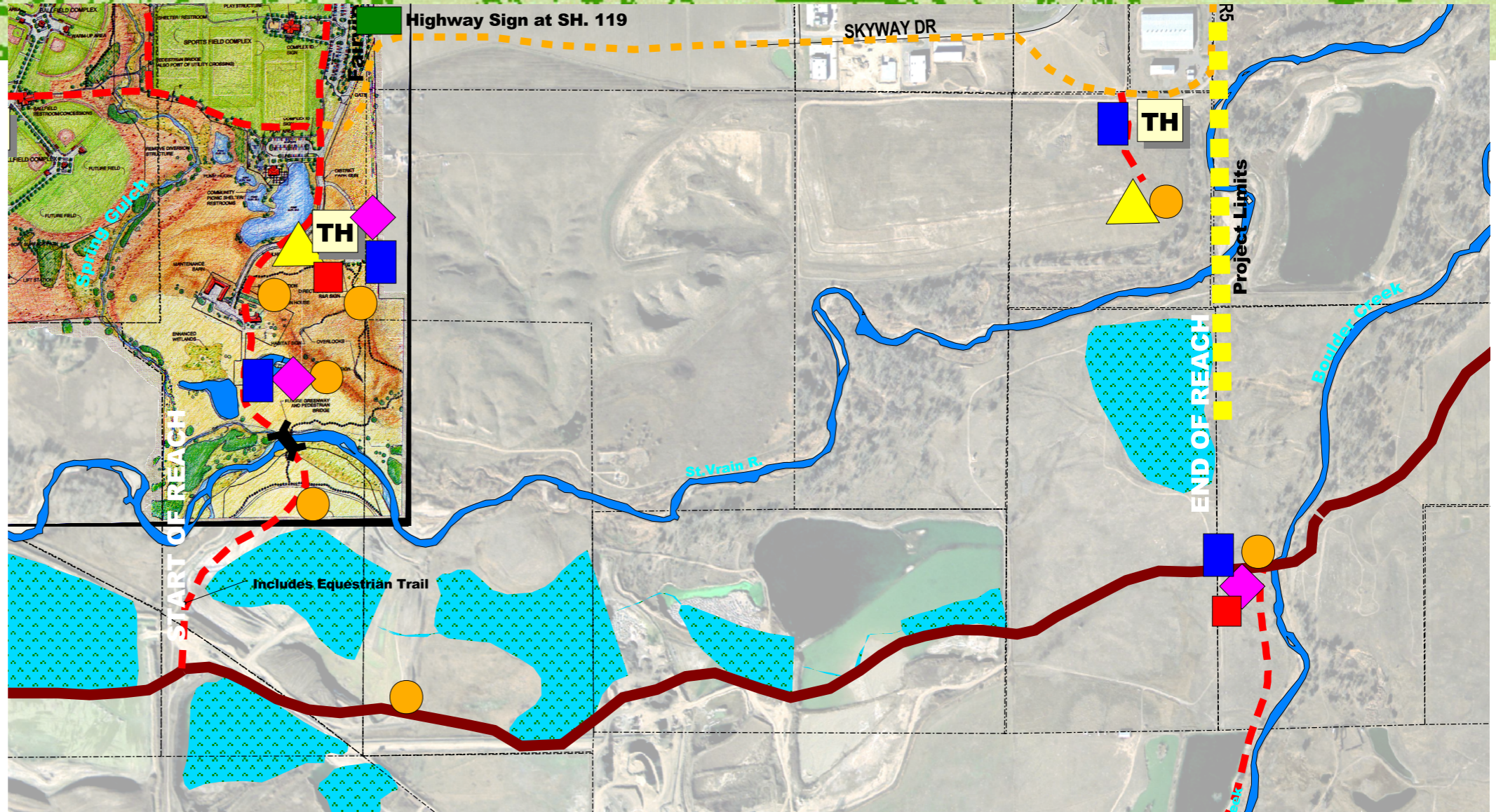
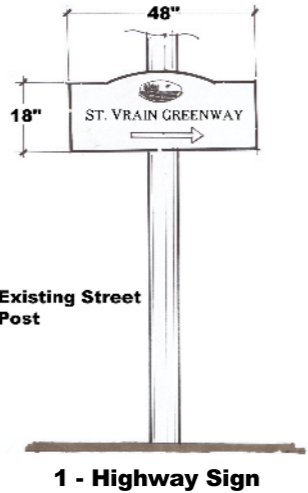
PRESERVE REACH

Signage Strategy



REGIONAL CONTEXT:

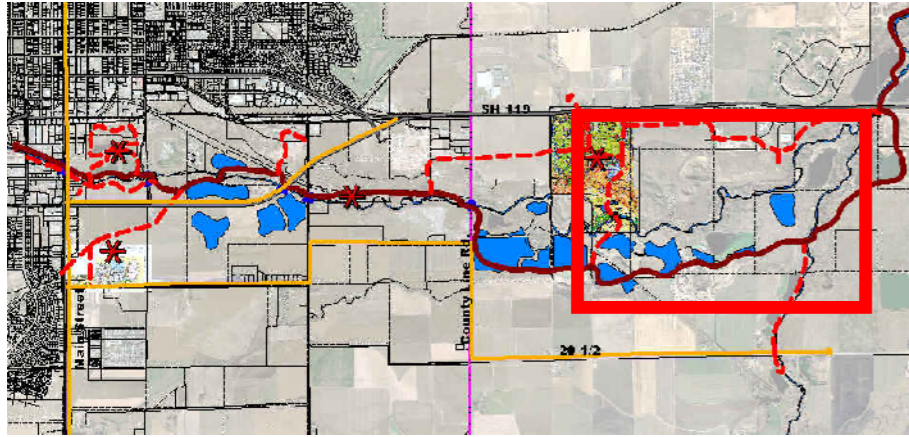
- 1 - Highway Sign
- 2 - Rules & Regulations
- 3 - Regulatory Signs
- ◆ 4 - Trail Marker
- ▲ 5 - Free Standing Park Sign
- 6 - Interpretive Signs
- 7 - Bridge Identity Sign



St. Vrain Greenway Master Plan







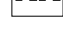
PRESERVE REACH

Design Elements



REGIONAL CONTEXT:

DESIGN ELEMENTS

-  Bench (1/4 mile in Urban and Suburban / 1/2 Mile in Rural / 3/8 Mile in Preserve) w/ Trash Receptacle
-  Bridge w/ Trash Receptacle
-  Shelter / Picnic Structure w/ Trash Receptacle
-  Trailhead / Parking w/ Trash Receptacle
-  Underpass (Lighted) w/ Trash Receptacle & High Water Gates
-  Picnic Area w/Trash Receptacle
-  Rest Rooms

