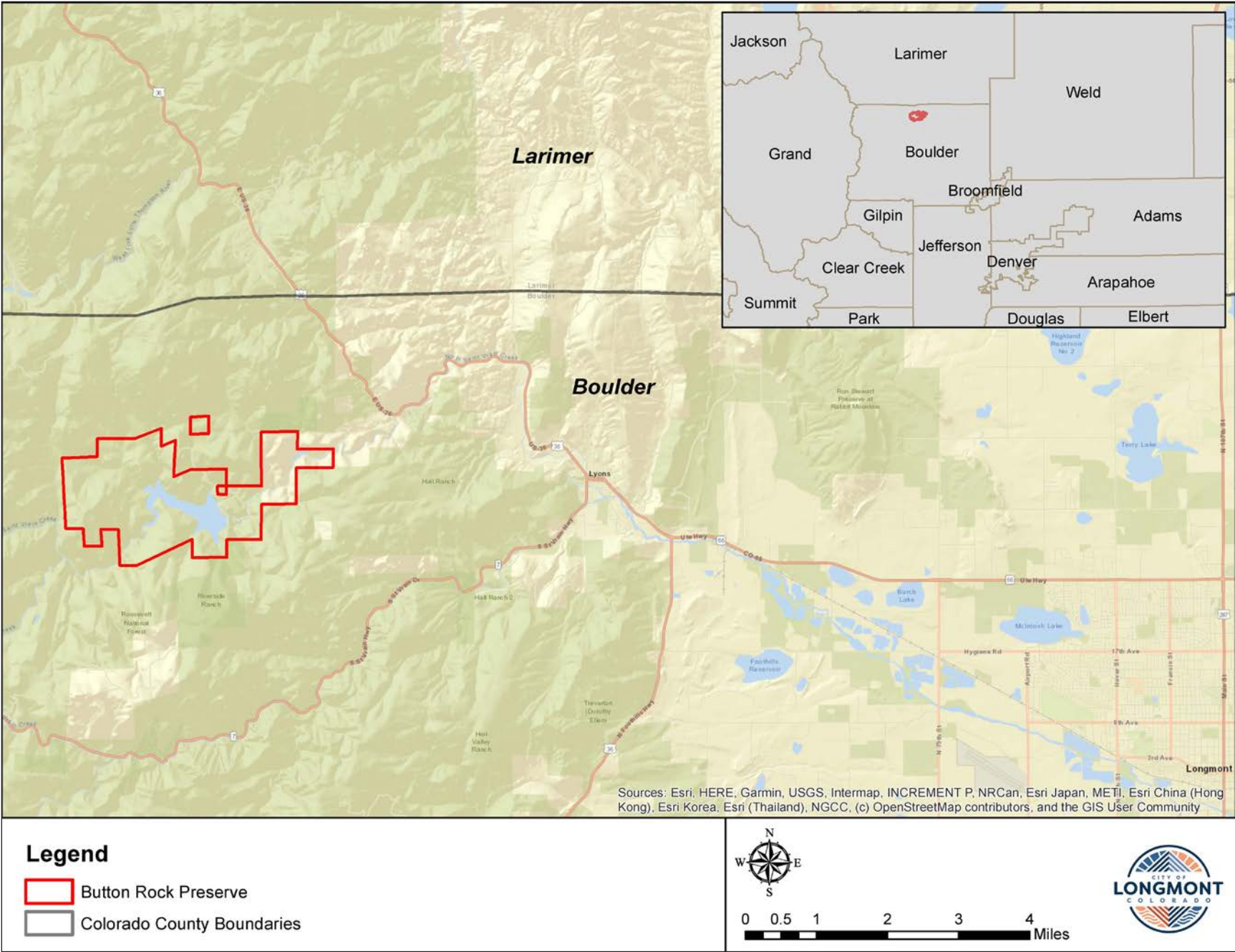
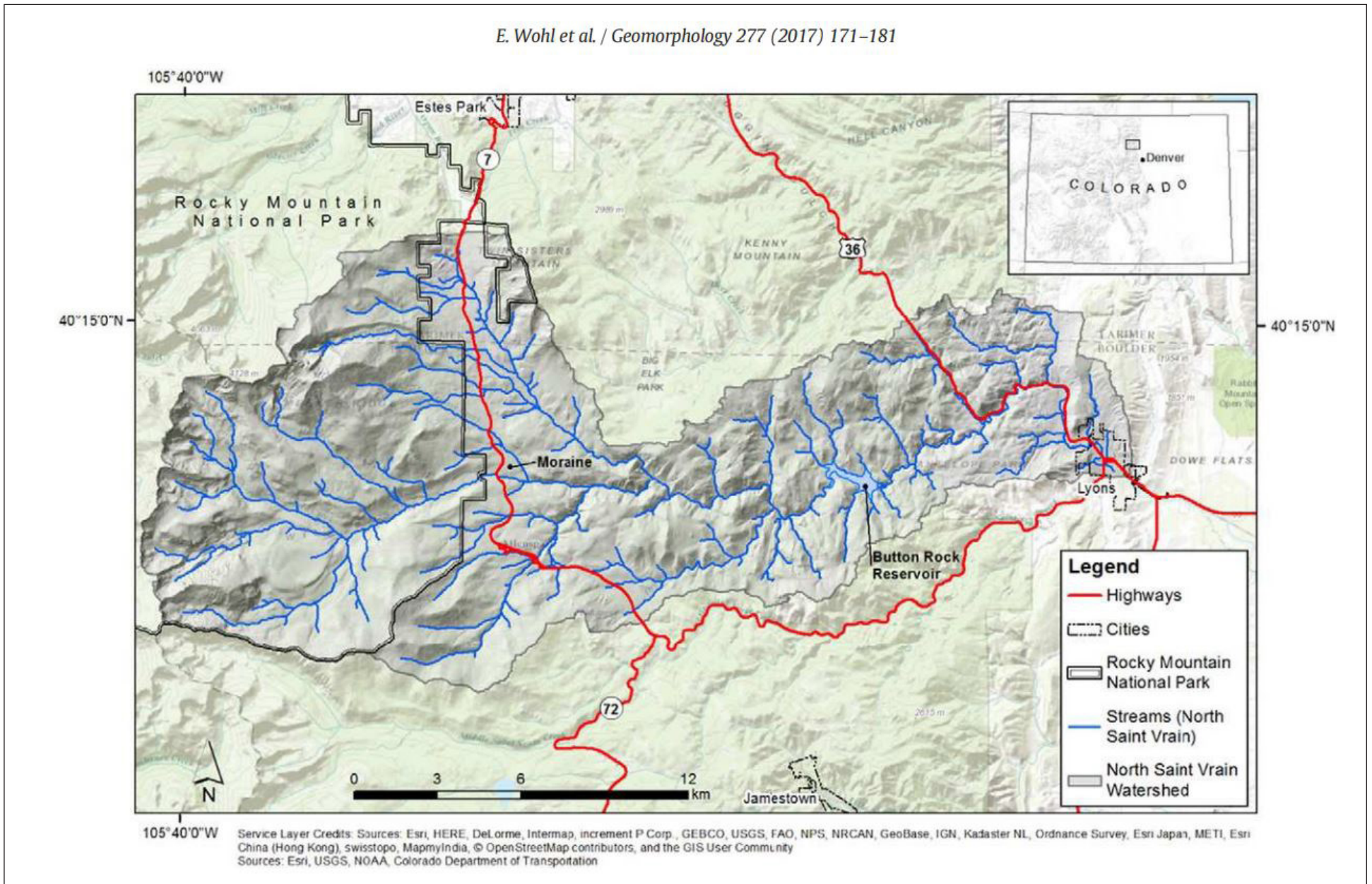




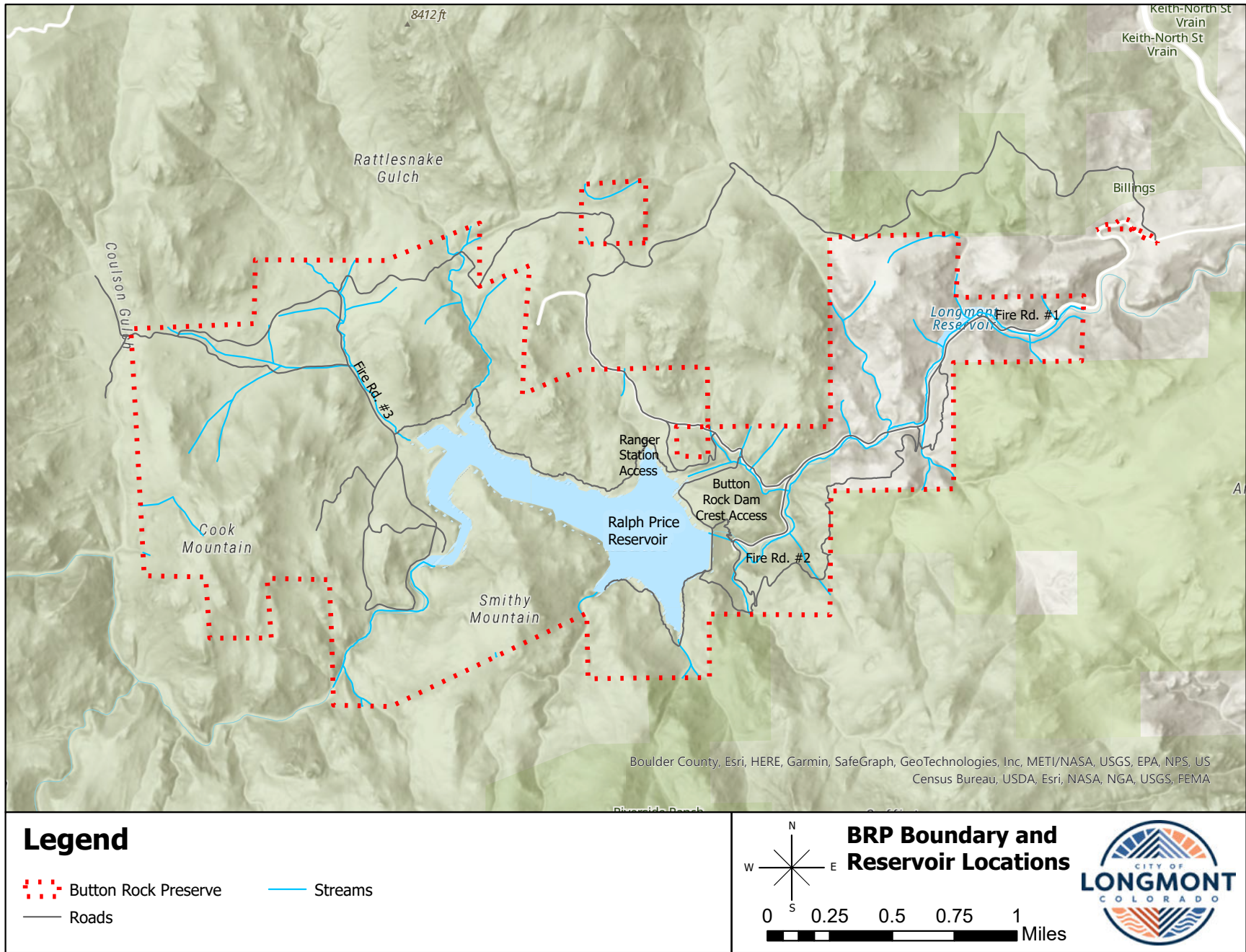
# APPENDIX A



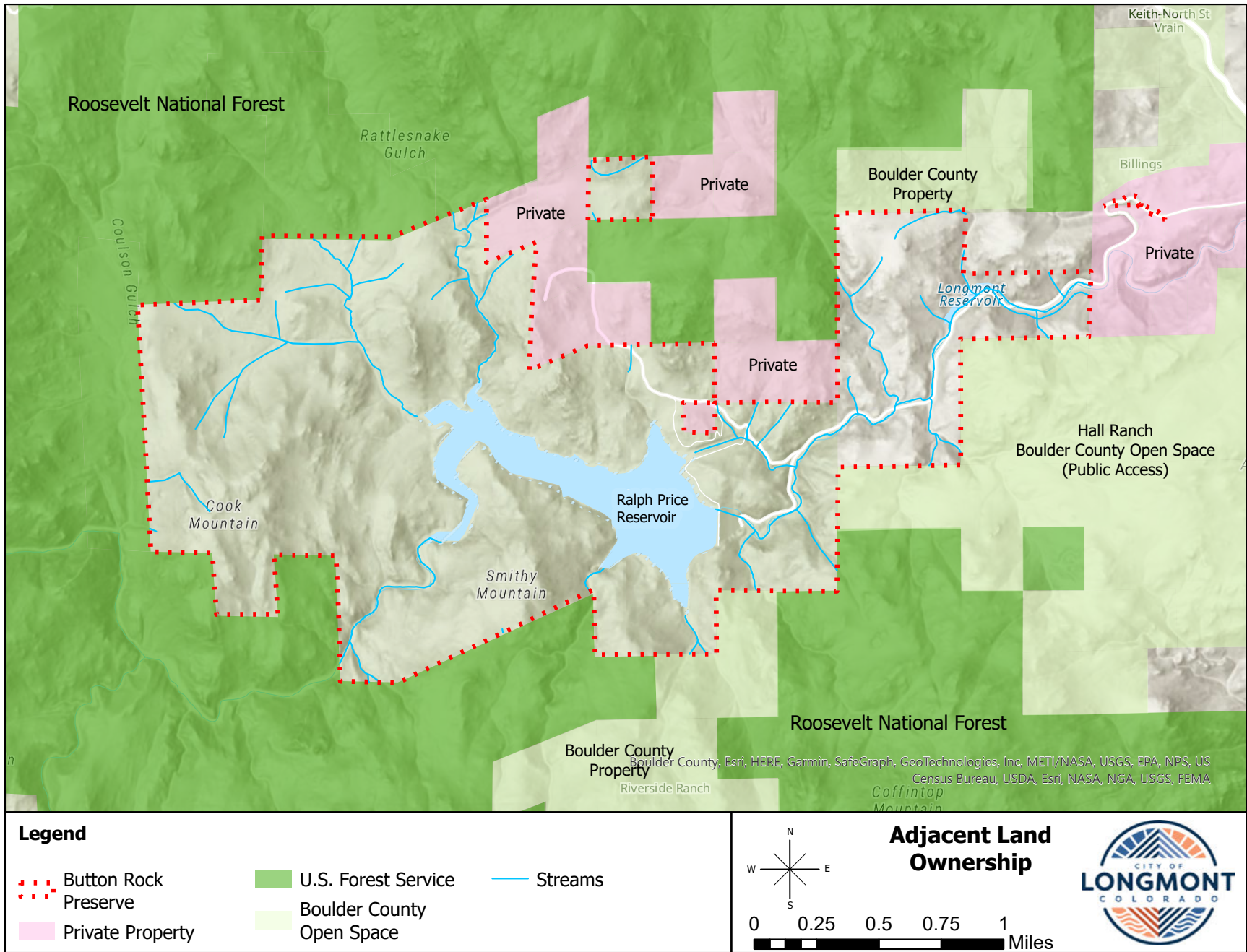
Map 1. Button Rock Preserve location.



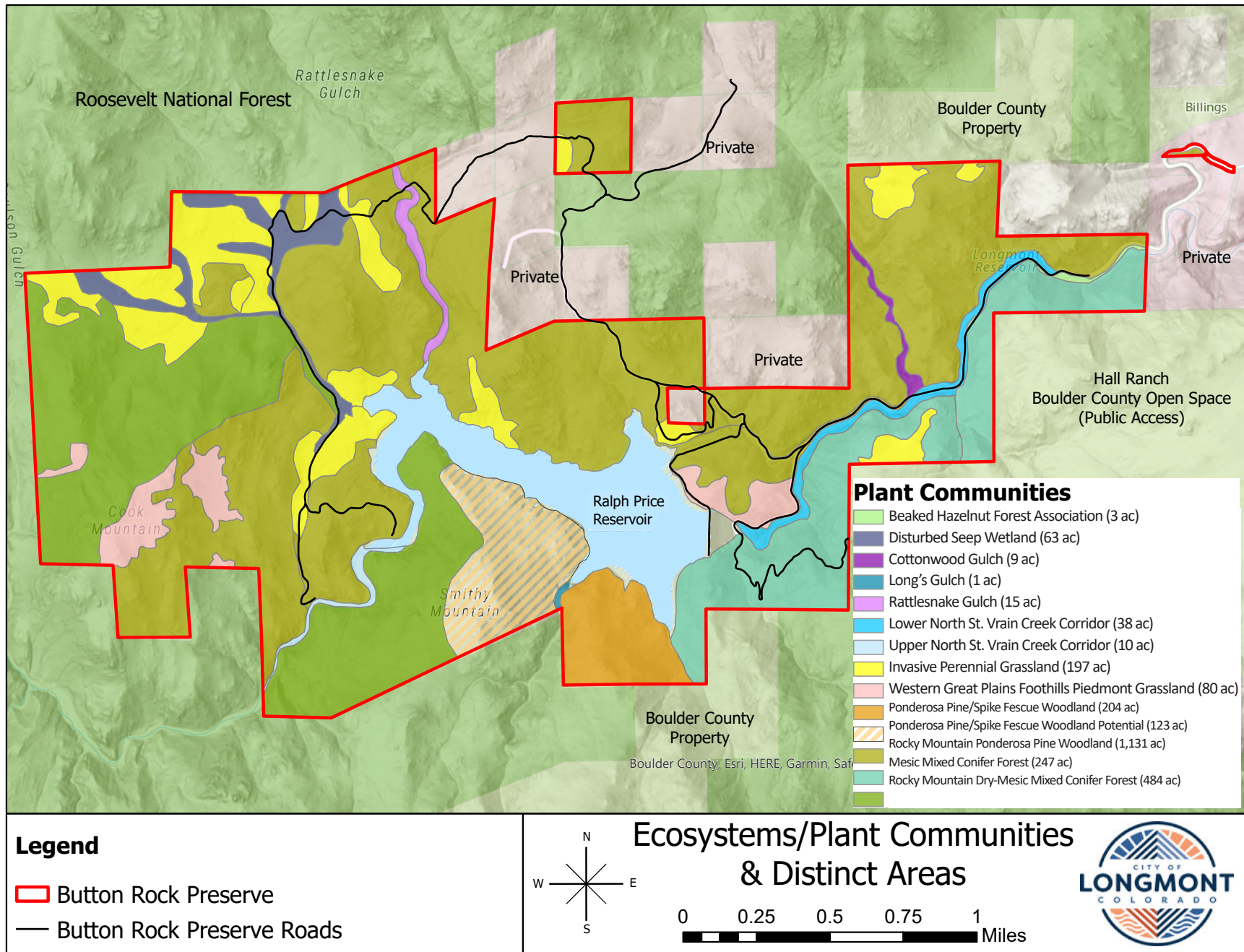
Map 2. North St. Vrain Creek Headwaters (Wohl et al., 2016)



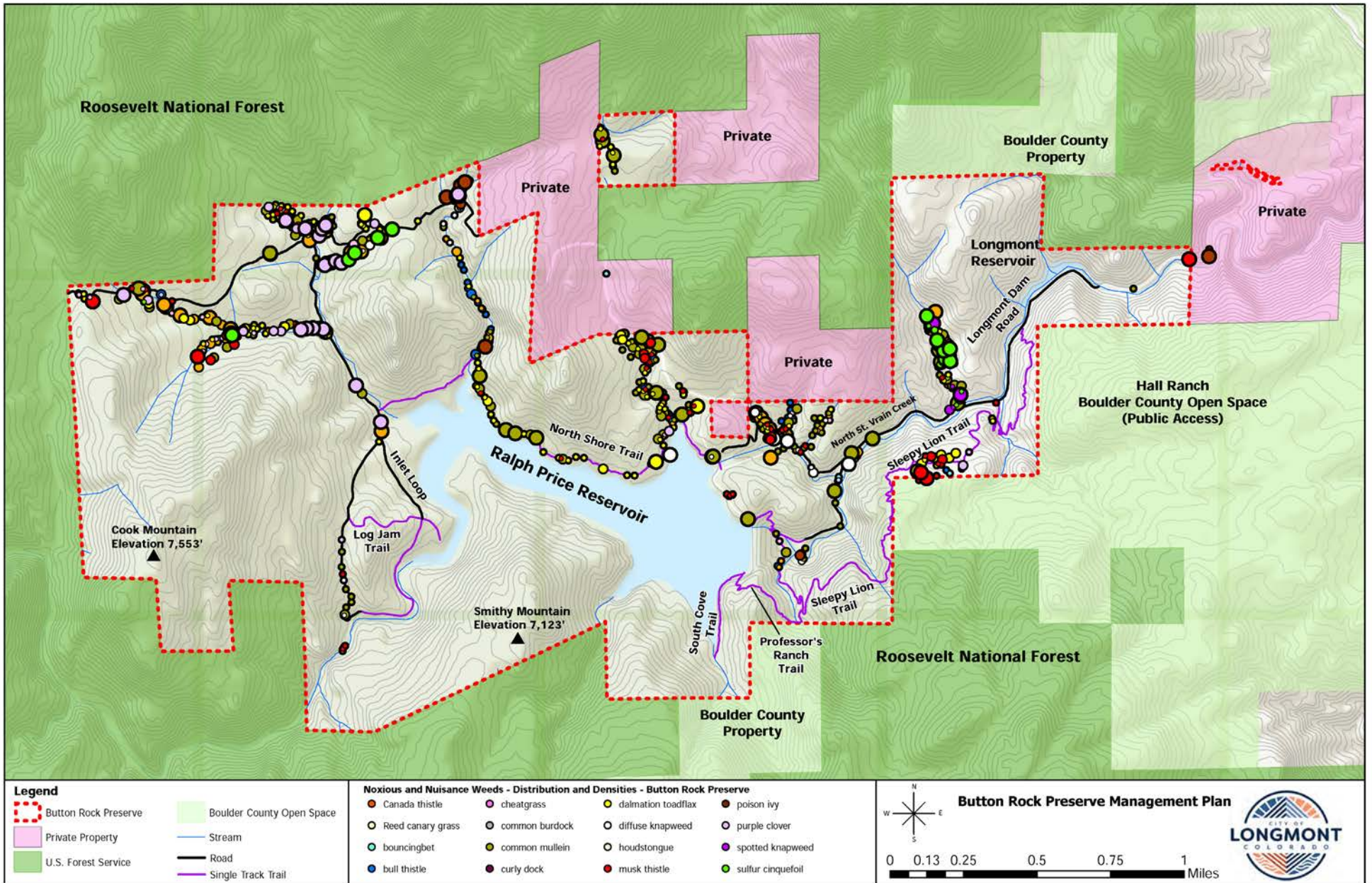
Map 3. Button Rock Preserve boundary and reservoir locations.



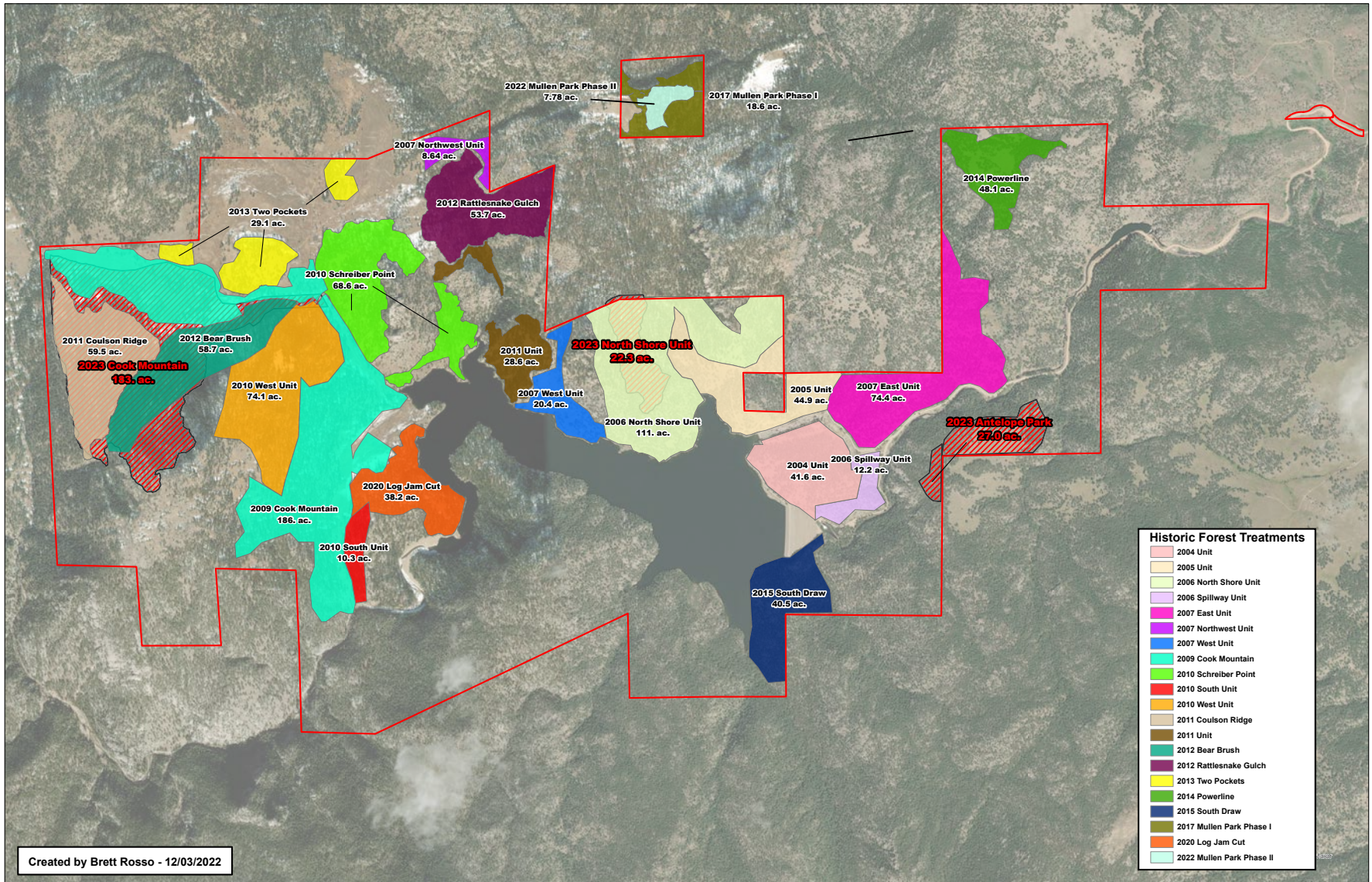
Map 4. Adjacent land ownership.



Map 5. Ecological Systems, Plant Communities & Distinct Communities (CNHP, 2019).

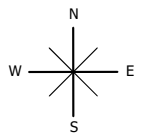


Map 6. Noxious weeds along major corridors (roads) in Button Rock Preserve (DHM Design, 2019).

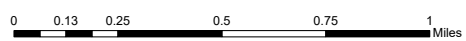


**Legend**

- Button Rock Preserve Boundary
- Future Forest Treatments

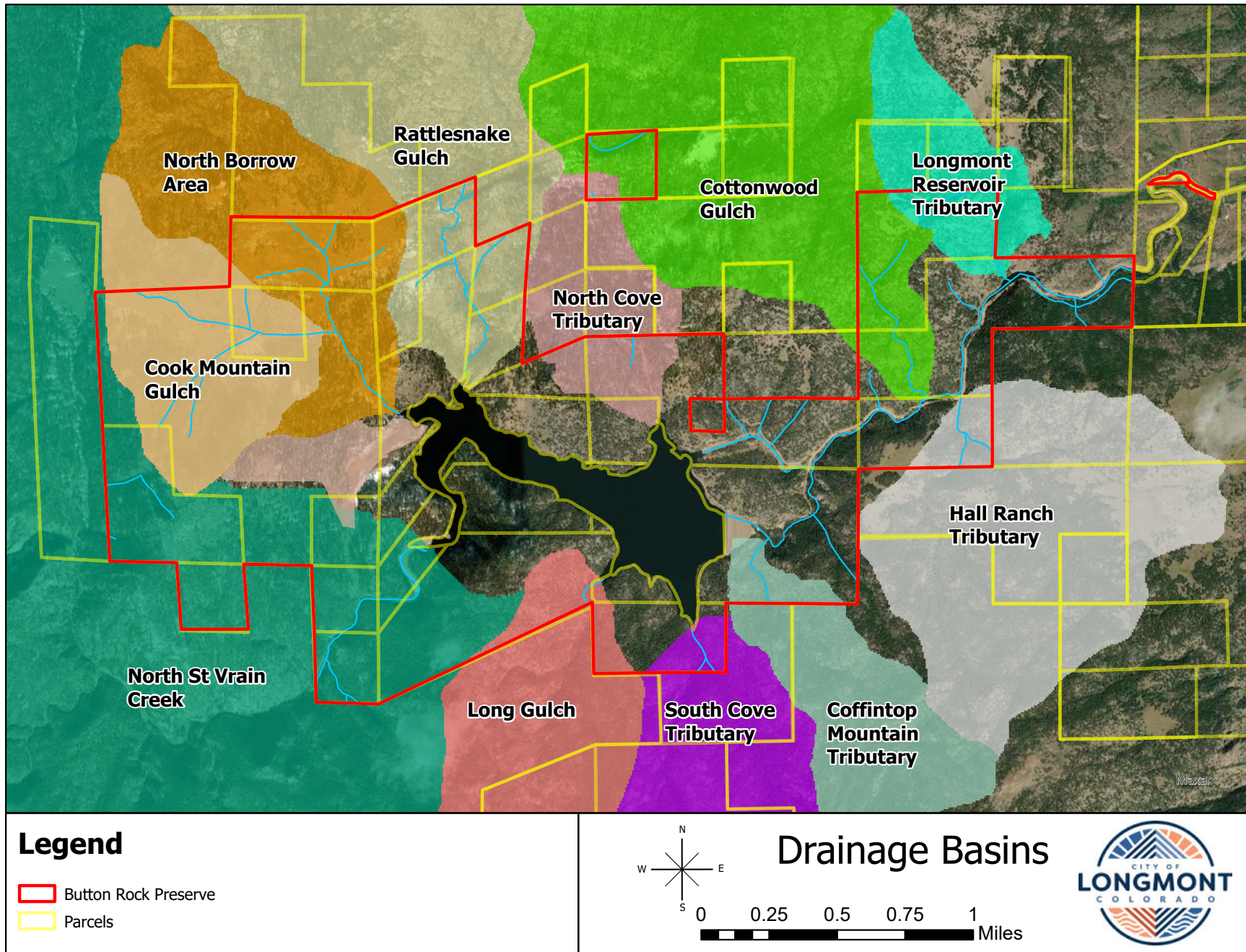


## Button Rock Preserve: Historic & Future Forestry Treatments

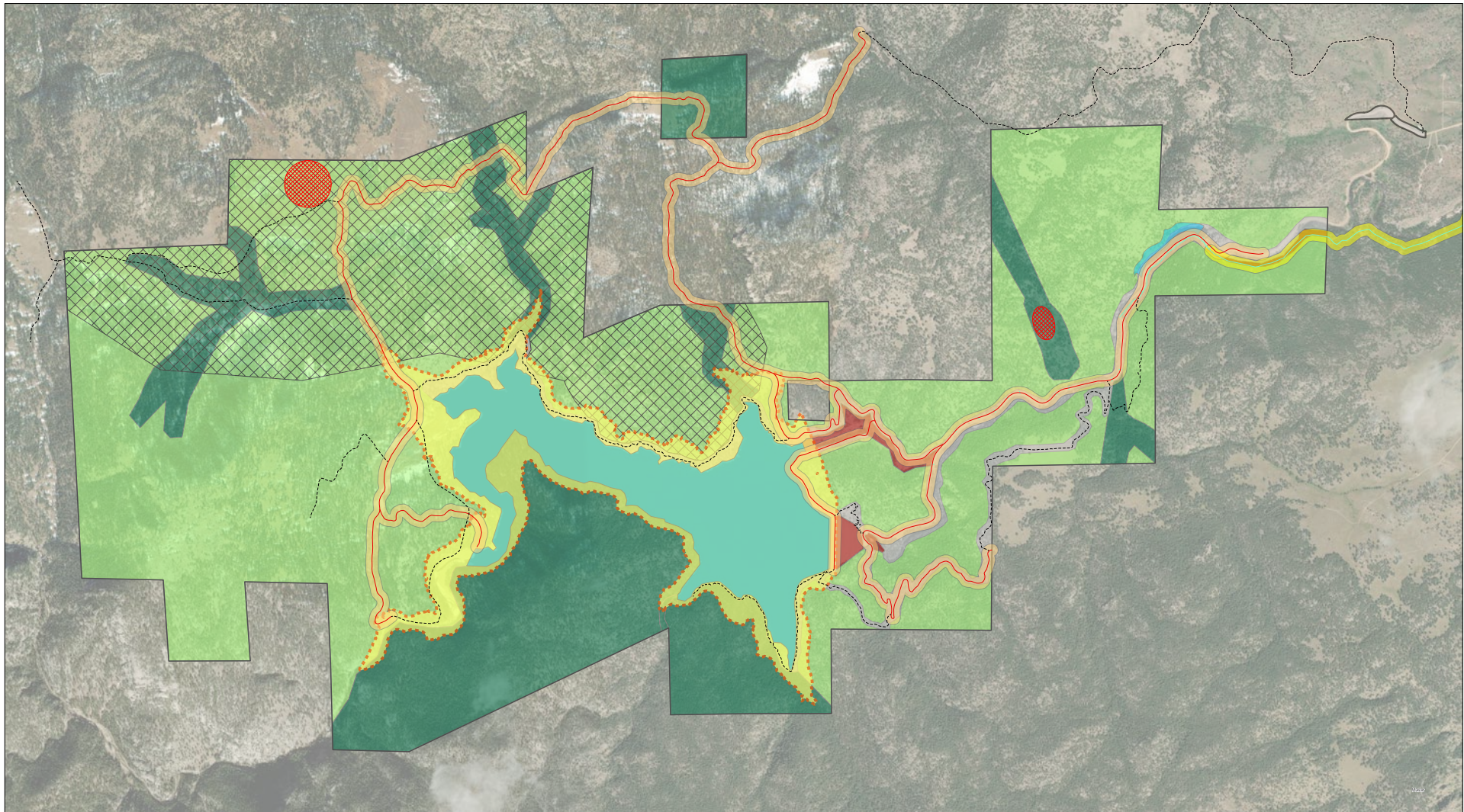


Map 7. Past and planned forest stewardship treatments at Button Rock Preserve (2023).



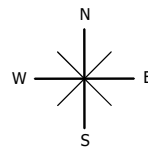


Map 8. Button Rock Preserve drainage basins (RiverRestoration, 2019).

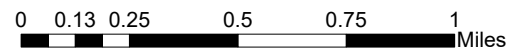


**Legend**

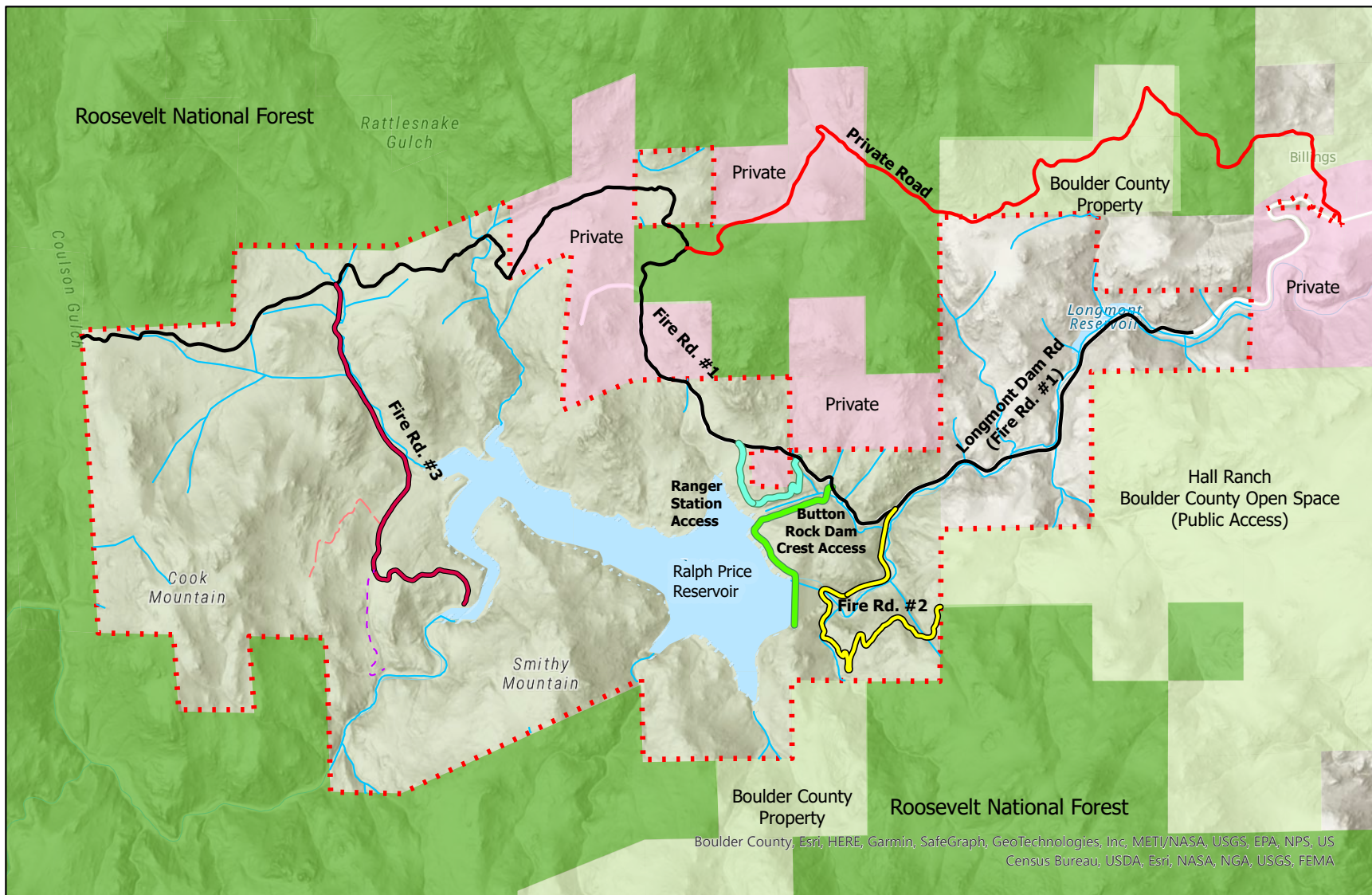
- Roads
- - - Trails
- ▨ 6500' Contour Extent
- 100' Road Buffer
- ▨ Borrow Areas
- BRP Boundary
- Raw Water Main Buffer



**Button Rock  
Enlargement Project**



**Map 9.** Potential future enlargement limits of Ralph Price Reservoir.



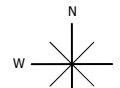
Boulder County, Esri, HERE, Garmin, SafeGraph, GeoTechnologies, Inc, METI/NASA, USGS, EPA, NPS, US Census Bureau, USDA, Esri, NASA, NGA, USGS, FEMA

**Legend**

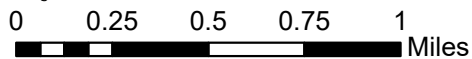
- Button Rock Preserve
- U.S. Forest Service
- Private Property
- Boulder County Open Space
- Streams

**Button Rock Preserve Roads**

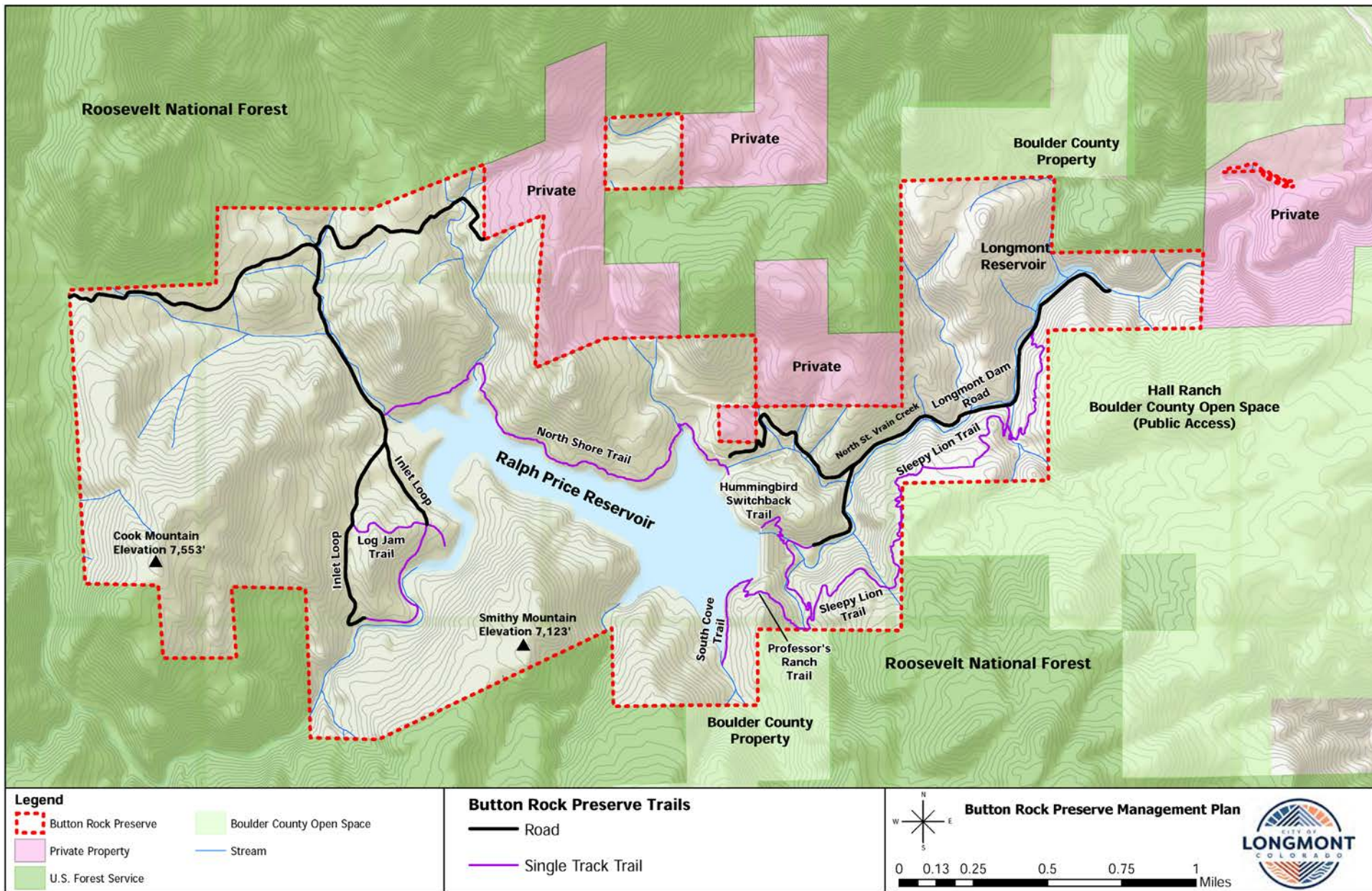
- Button Rock Dam Rd.
- Fire Rd. #2
- Log Jam Rd.
- East Cook Mountain Rd
- Longmont Dam Rd.
- Ranger Rd. Loop
- Grocery Rd Emergency Egress
- Fire Rd #1
- Fire Rd. #3
- R.P. Inlet Access



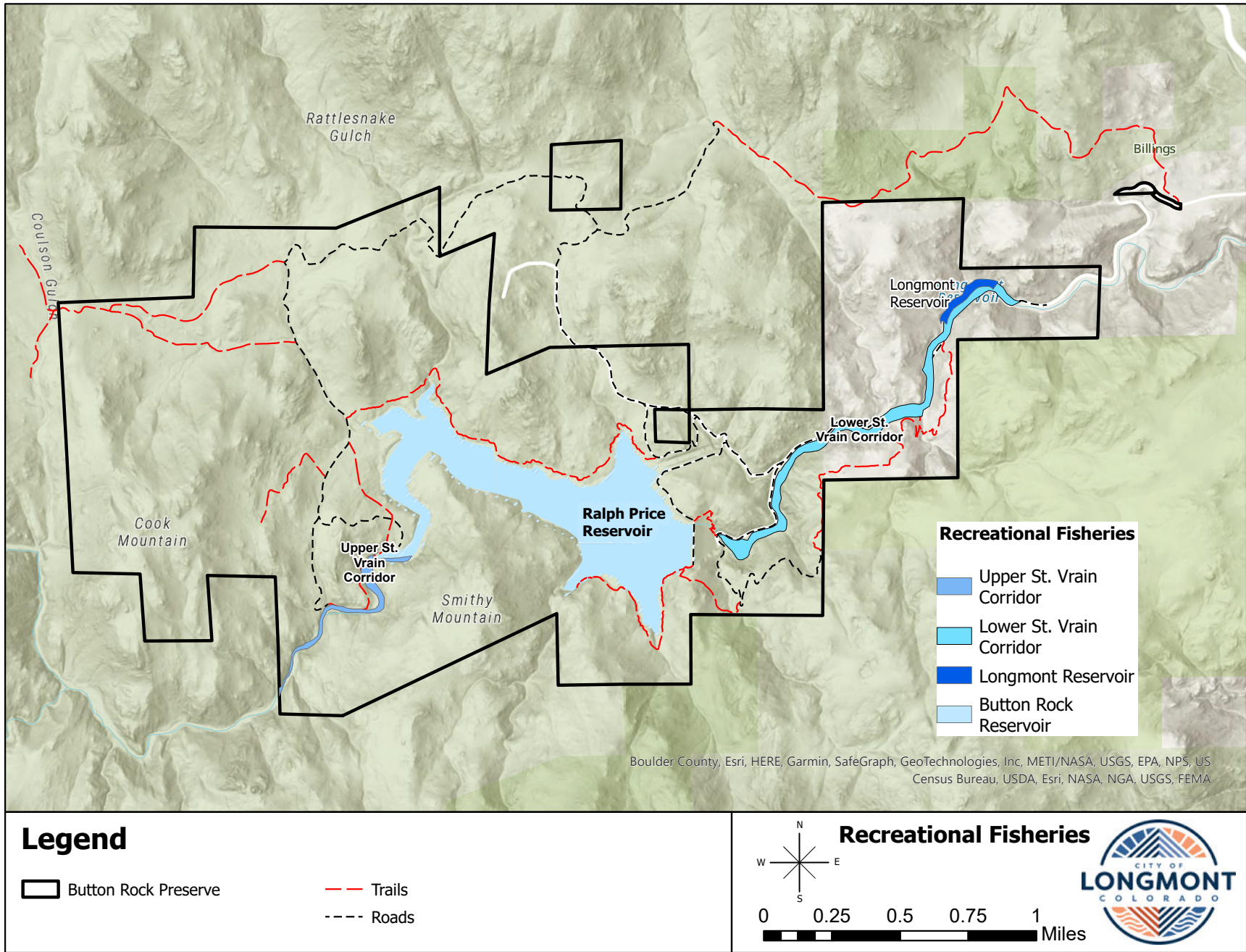
**Button Rock Preserve Management Plan**



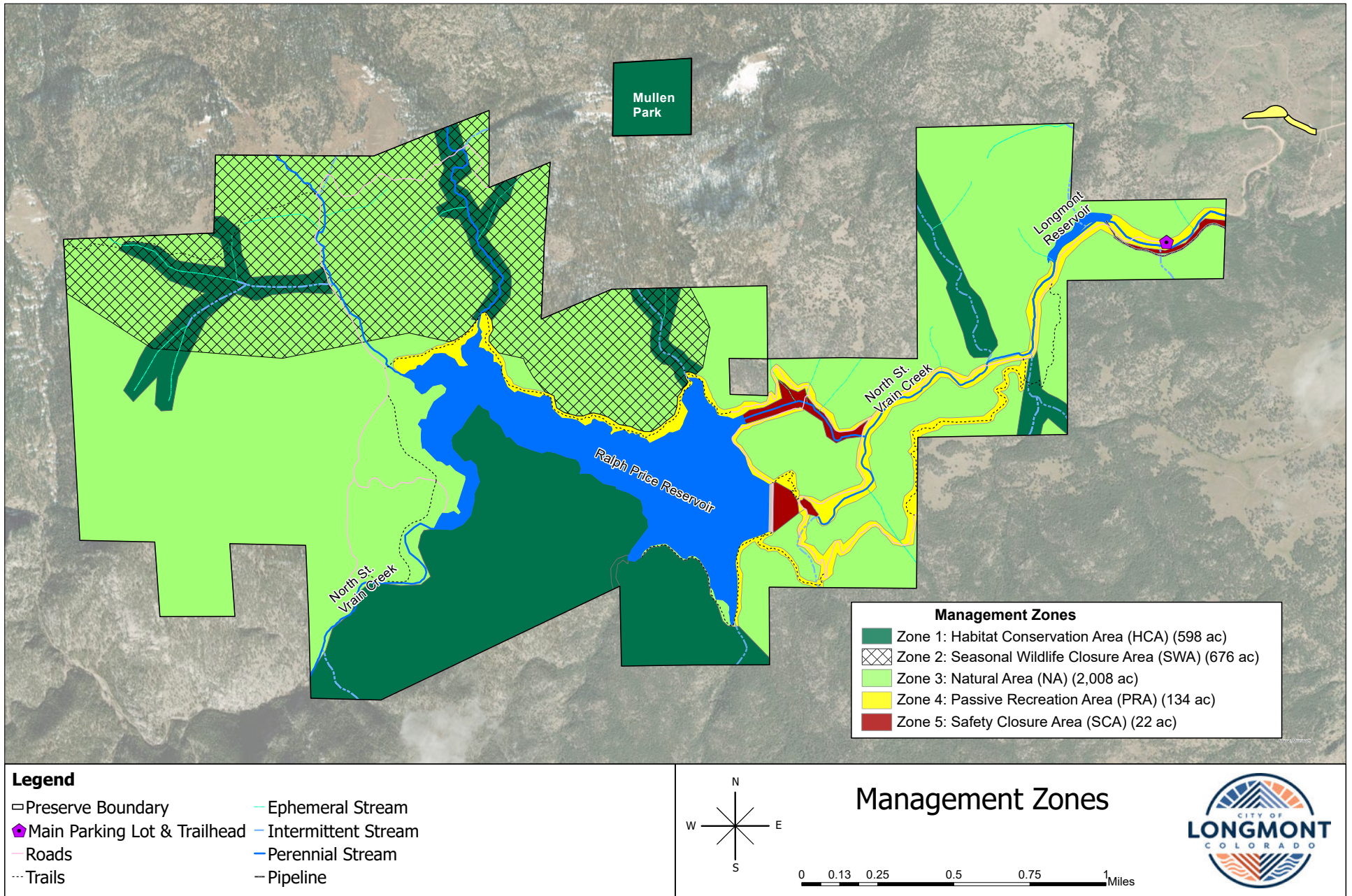
Map 10. Button Rock Preserve roads network.



Map 11. Button Rock Preserve trails network.



Map 12. Button Rock Preserve recreational fisheries.



Map 13. Button Rock Preserve management zones (2023).