

Collyer Park Master Plan



Final Report

for
Historic Eastside Neighborhood Association

booklet prepared by
Collyer Park Master Plan Committee

July 10, 2003

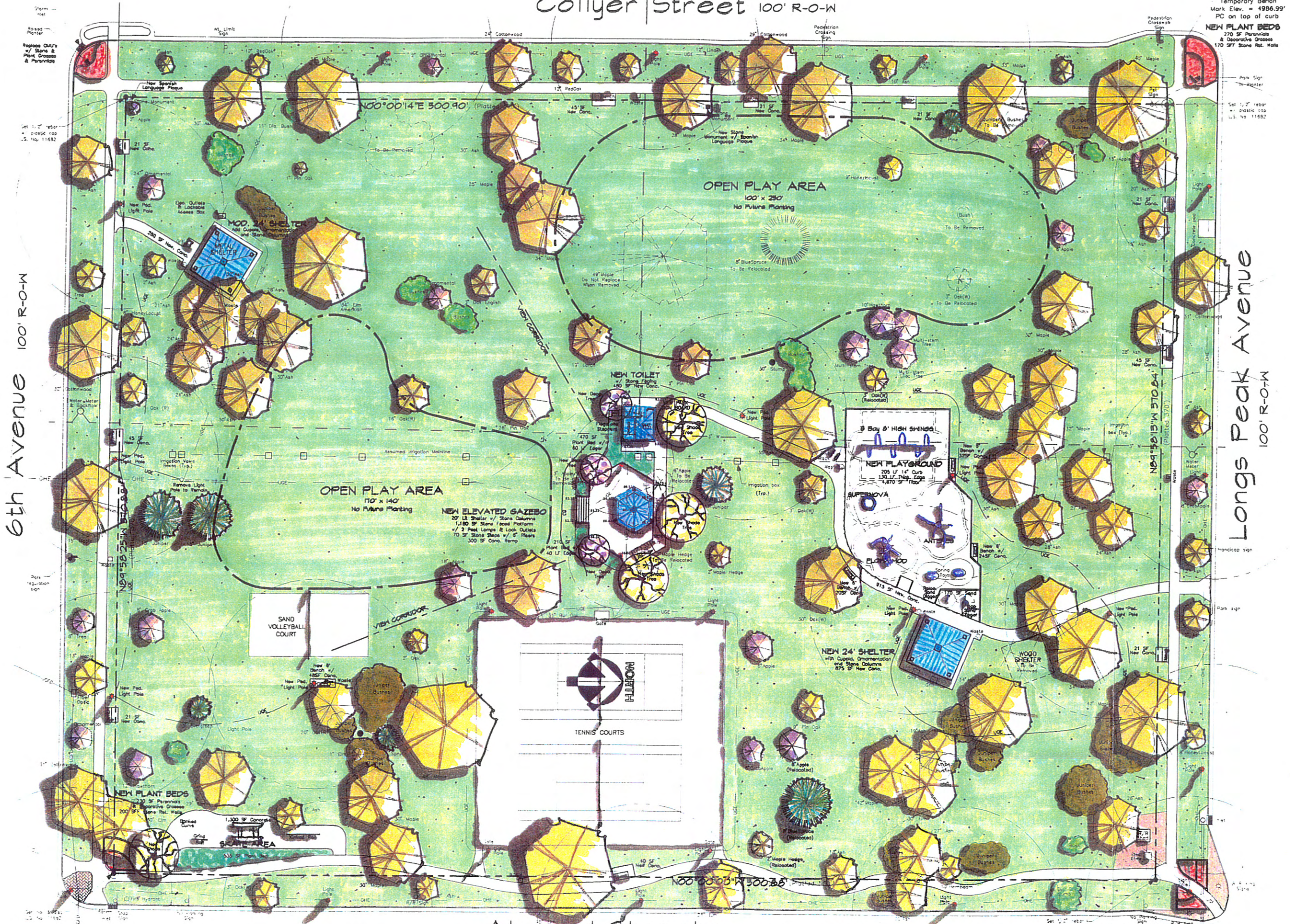
Collyer Street 100' R-O-W

Temporary Bench
Mark Elev. = 4986.99'
PC on top of curb
NEW PLANT BEDS
270 SF Perennials
& Deciduous Grasses
170 SF Stone Ret. Walls

6th Avenue 100' R-O-W

Longs Peak Avenue
100' R-O-W

Atwood Street 100' R-O-W



Historic Eastside Neighborhood Association

COLLYER PARK MASTER PLAN

Play Environments, LLC July 10, 2003 Not to Scale

NEW PLANT BEDS
180 SF Perennials
& Deciduous Grasses
220 SF Stone Ret. Walls

Table of Contents

Final Report.....	1
Appendix A: Amount of Neighborhood Involvement	3
Appendix B: Historical Report	4
Appendix C: Walking Tour Results	10
Appendix D: Design Program Recommendations	19
Appendix E: Second Neighborhood Meeting Summary	21

Additional Project Information

Rendered Final Master Plan Reduction
Proposed Elevated Gazebo Sheet
Proposed Light Fixture & Site Furniture Sheet
Proposed Playground Equipment Sheet
Proposed Informal Skate Area Components Sheet
Final Master Plan Cost Estimates
Walking Tour Survey samples (English and Spanish) of questionnaires, stations, etc.
First Neighborhood Meeting Packet
Second Neighborhood Meeting Packet
Grant Project Budget

COLLYER PARK MASTER PLAN

FINAL REPORT

Since over fifty percent of the Historic Eastside Neighborhood is Latino, all printed material was available in English and Spanish, as well as having a Spanish translator at all neighborhood meetings. All announcements and pertinent information for neighborhood involvement were:

- Posted at the park site,
- Placed at the OUR Center,
- Sent to all known email addresses for HENA residents and businesses, and
- Hand delivered to every household and business located within the historic eastside neighborhood.

Refer to Appendix A for the amount of neighborhood involvement.

Between November 1, 2002, and April 30, 2003, the Collyer Park Master Plan Committee hired a surveyor and historian to prepare the park topographic survey and a park historical report, respectively. See Appendix B for the Historical Report. They also hired the landscape architecture firm, Play Environments LLC (Consultant) to design the park master plan.

From December 8, 2002 through January 4, 2003, the committee placed a self-guided walking tour asking individuals and families to explore and assess the overall park site and existing park features. Seven stations were placed around the park site. Refer to Additional Project Description Information - Walking Tour Survey Samples. The committee received thirty-two survey questionnaires. One third of the respondents are of Spanish descent. See Appendix C for the Walking Tour Results.

On May 15, 2003, the committee and Consultant conducted the first neighborhood meeting at the Longmont Public Library to review the walking survey results and historical report, and to discuss specific park elements and recreation facilities to be included in the preliminary designs. Refer to Additional Project Description Information - First Neighborhood Meeting Packet. Seven people attended this meeting. Please note that these comments were incorporated into the design program recommendations (mentioned below) and that no separate meeting summary was prepared.

The committee then produced design program recommendations based on information obtained through a compilation of findings from the self-guided walking tour, the first neighborhood meeting and from the park historical report. See Appendix D for the Design Program Recommendations.

The Consultant used these recommendations along with other information they gathered to prepare a preliminary master plan with cost estimates, elevation drawings and site element details. Information they gathered includes:

- Researching period lighting within the neighborhood,
- Working with manufacturers for the existing southwest shelter, playground equipment and period street lighting, and
- Working with City of Longmont Parks & Recreation Department staff.

Upon completion of the preliminary design, the Consultant conducted the second neighborhood meeting on Wednesday, June 25, 2003, at the southwest shelter in Collyer Park. Refer to Additional Project Description Information - Second Neighborhood Meeting Packet. Nine people attended this meeting to review and make comments about the preliminary master plan. All participants agreed with the design program recommendations and liked the preliminary master plan (i.e., overall design, revised playground layout, central gazebo, informal skate area, designated open space areas, relocation of interior park lighting, new restroom building, etc.) with the exception of one individual. This attendee did not want to preserve the open space areas or have an informal skating area because of the increase of noise these elements may generate.

All attendees preferred:

- The historical period lighting that is located on the 500 block of Atwood Street, 4th Avenue between Collyer and Martin Streets, and on 6th Avenue east of Baker Street.
- Replacing the slats of the existing exterior wood benches with recycled plastic lumber.
- The proposed interior benches and trash receptacles.
- Raising and constructing a new restroom building rather than modify the existing one.
- Using flagstone instead of brick for the shelters' and central gazebo posts, the new bathroom facade and the raised plant beds.

Their suggested changes were:

- Retain the electrical outlets at the southwest shelter because they are used for the Carriage Rides but relocate them and have them lockable.
- Provide a small low planting buffer between the informal skate area and the existing sidewalk to avoid potential conflicts with pedestrians and skaters.
- Remove one spring toy in the revised playground and replace it with a sand digger.
- Have vines grow on the existing restroom building until it can be replaced.

See Appendix E for the Second Neighborhood Meeting Summary.

The Consultant then prepared a final park master plan with revised cost estimates to reflect the second neighborhood meeting attendee's comments.

Since there was continual concensus throughout the neighborhood involvement processes concerning the park's development goals and desirable park facilities/recreation activities, and that only a few minor changes to the preliminary master plan were requested at the second neighborhood meeting , the committee decided not to hold a third neighborhood meeting but rather make a presentation to the HENA Board to review the overall project, Final Master Plan and, present the board with the Final Report and applicable material. The Consultant attended this board meeting to briefly discuss the park master plan and answer questions that may arise.

APPENDIX A: AMOUNT OF NEIGHBORHOOD INVOLVEMENT

Collyer Park Master Plan Committee

Joyce Jensen (committee chairperson), 500 Atwood
Nancy Eletto, 616 Kimbark
Paula Fitzgerald, 419 Emery
Rick Jacobi, 419 Collyer
Sharon O'Leary, 534 Emery

Walking Tour Survey

Up in park for one month, 32 returned questionnaires (9 in Spanish)

1st Meeting Attendees

Thursday, May 15, 2003, 6:00 p.m. - 8:00 p.m., Longmont Public Library, Room B

ATTENDEES (7)

Bob Carlson, 501 Emery
Paula Fitzgerald, 419 Emery
Joyce Jensen, 500 Atwood
Rock Kurczak, 700 Atwood
Patty Leonard, 700 Atwood
Daria C. Leverne, 429 Emery
Jennifer Pollman, 352 Collyer

Consultants:

Nancy Eletto: Play Environments, LLC
Bruce Pizzimenti: Play Environments, LLC

2nd Meeting Attendees

Wednesday, June 25, 2003, 6:00 p.m. - 8:00 p.m., Collyer Park SW Shelter

ATTENDEES (9)

Doug Brown, 1448 Hillstop Dr
Sandy Fallingin, 510 Baker
Paula Fitzgerald, 419 Emery
Kevin Hodgden, 601 Collyer
Rick Jacobi, 419 Collyer
Joyce Jensen, 500 Atwood
Michelle & Nathan Pulley, 540 Emery
Sue Ann Vollmer, 400 Baker

Consultants:

Nancy Eletto: Play Environments, LLC
Bruce Pizzimenti: Play Environments, LLC

HENA Board Meeting Presentation

Thursday, July 10, 2003, 7:30 p.m., YMCA Meeting Room

ATTENDEES (other attendees not noted since report was finished before the meeting)

Joyce Jensen, 500 Atwood

Consultant:

Nancy Eletto: Play Environments, LLC

NATIVE CULTURAL SERVICES

AN HISTORICAL REVIEW

OF

COLLYER PARK

BOULDER COUNTY, COLORADO

By

Peter J. Gleichman

Prepared For:

Historic Eastside Neighborhood Association

Prepared By:

Native Cultural Services

P.O. Box 357

Ward, Colorado

April 2003

INTRODUCTION

Collyer Park was established by the Chicago-Colorado Colony when Longmont was founded in 1871. The park is named for Robert Collyer, the first president of the Chicago-Colorado Colony. The park is in the Historic Eastside Neighborhood, and at the request of the Historic Eastside Neighborhood Association Native Cultural Services conducted an historical study of the park. This study is one part of the historic documentation of the Eastside Neighborhood.

Collyer Park is in the SE1/4 of the NE1/4 of Section 3, T2N, R69W of the 6th PM, Boulder County, CO. The park is the entirety of Block 24 of the original townsite of the City of Longmont. It is bounded on the north by Longs Peak (Seventh) Ave., on the south by Sixth Avenue, on the east by Atwood St., and on the west by Collyer St. The Burlington Northern Railroad tracks (formerly Colorado & Southern RR) run along the east side of the park.

Research for this study was conducted using resources at the Longmont Public Library, the Longmont City Archives and the Carnegie Branch Library for Local History in Boulder. Records and photographs pertaining to the park were sought at the Longmont Parks Department, Planning Department, and City Clerk's office; and at the Colorado Historical Society, Denver Public Library - Western History Department and the Berthoud Museum.

Collyer Park was documented as an historic site by the City of Longmont Landmark Designation Commission in 1978. A state inventory form was filled out by Virginia Estes and Dorothy Large, and the park was assigned Smithsonian Number 5BL559. The Inventory Form is appended.

CURRENT STATUS

Collyer Park has been and is well maintained and used as a public park. The park is fully landscaped with grass and mature trees and shrubs. Two open-sided shelters with picnic tables are present, one in the northeast corner of the park was built in the 1970s. The shelter in the southwest corner of the park is 5-8 years old. A modern playground is near the northeast corner. A brick building with restrooms is in the center of the park, built in the 1970s. A volleyball court is present, and 2 lighted tennis courts are on the east side of the park. The current tennis courts are 2 years old, and replaced earlier courts. Concrete sidewalks are present along the perimeter of the park. In 1978 Lyons flagstone sidewalks were located on the west and south perimeters, these have since been replaced with concrete walks. Several benches are along the perimeter of the park, and there is lighting.

A plaque placed by the Historic Eastside Neighborhood at the southwest corner of the park summarizes the history of the park.

The current built environment of the park is thus entirely modern, with the exception of some of the trees. The Parks Department does have a complete tree inventory of the park. There are no historic buildings or structures in the park.

FOUNDING AND EARLY HISTORY

Collyer Park was one of the original parks planned and platted by the Chicago-Colorado Colony, the founders of Longmont. The Chicago-Colorado Colony was part of a movement to colonize the west with planned communities or colonies. According to the St. Vrain Historical Society, a call for an organizational meeting of the Chicago-Colorado Colony was made by Robert Collyer, prominent Chicago minister, on February 22, 1870 (St. Vrain Historical Society, 1971).

The Chicago-Colorado Colony is most thoroughly documented in Willard and Goodykoontz's 1926 study "Experiments in Colorado Colonization, 1869-1872". The colony is also summarized and the plans and by-laws given in Boyles 1967. In November 1870, a meeting was held in Farwell Hall, Chicago, to pursue the founding of a colony in Colorado. An organization was established with Robert Collyer elected President, S.H. Gay Vice-President, the Hon. Wm Bross treasurer, and Col. C.N. Pratt Secretary. Initiation into the colony was \$5.00. The officers appointed a locating committee of 3 to travel to Colorado and find a site suitable for the Colony (Boyles, 1967).

The locating committee arrived in Denver in January, 1871, and had selected the site by February. Names proposed for the Colony were: New Chicago, Collyer, and Bross. On January 14, 1871, the Chicago Tribune referred to it as the "Collyer Colony" (Willard and Goodykoontz 1926:240). A local name for the Colony - Longmont - was decided upon, due to the view of Longs Peak. Willard and Goodykoontz relate that Collyer and other founding organizers would not reside at the Colony but would build dwellings for occasional visits. "At the close of his present lecture season, Rev. Robert Collyer will visit the Colony and other parts of Colorado. He will then make a three months' lecturing tour in England with reference to bringing out accessions of English families to the Colony" (1926:245).

Robert Collyer apparently never made it to Longmont or Colorado. The Great Chicago Fire occurred in 1871, and destroyed his church along with much of the city. Collyer was a leader in the rebuilding of Chicago, and this effort seems to have diverted him from visiting the colony.

The Colony was a planned community, with Industry, Temperance and Morality the themes. As part of the planning, the townsite was platted with streets, blocks, and lots. Land was set aside for parks, schools, churches, county buildings, and a university. Robert Collyer had mentioned a library as being part of the planned community at a meeting in Chicago in January 1871. Library Hall was opened on June 12, 1871, apparently the first library built in Colorado. The opening was celebrated with the first Strawberry Festival. (St. Vrain Historical Society, 1971).

Three original parks were planned. Collyer Park on the eastside, Thompson Park on the west side, and Lake Park (now Roosevelt Park) on the north. Collyer and Thompson parks each comprised a city block. The original plat for the colony shows the parks with paths or walks, with the walks in Collyer park leading to the center of the park (Figure 1).

Virtually no information is available about Collyer Park in the 19th century. In 1884 Arbor day was proclaimed for April 19. A day of festivities was held at Collyer Park, with citizens cleaning the park and planting trees and shrubs (Duncan 1981).

There is an indication that a bandstand stood in the park in the late 1880s or 1890s. A photograph of a raised wooden platform with a Cornet Band posing in front of it is on file at the Longmont City Archives, and at the Denver Public Library - Western History Department (Figure 2). The photograph was taken by Charles W. Boynton, publisher of the Longmont Ledger. The City Archives have dated the photo as being taken between 1894-1896. The Denver Public Library (DPL) has the photo dating between 1880 and 1900. A hand-written note on the back of the print at DPL says the photo is of the Cornet Band next to the bandstand in Collyer or Thompson Park.

The Longmont Daily Times-Call has published the photo stating it was taken about 1915, and that it is of the "old band stand at Collyer Park" (Times-Call, 1971:4A). The St. Vrain Valley Historical Association, in their book "They Came to Stay" published the same photo with the caption "Longmont's Coronet Band, in Thompson Park" (1971:218).

It is possible that wooden bandstands were present in both Collyer and Thompson Parks prior to the brick bandstands which were built in both parks in 1920. However, no written records of 19th century bandstands in either park have been located., including the absence of any newspaper articles about concerts or bandstands. The only record is the photograph.

One other historic photograph of Collyer Park is at the Longmont City Archives. Archivist Eric Mason thinks the photo may date to around 1890. The photo shows trees, walks, and what may be a drinking fountain at the left side. There does not appear to be much built in the park (Figure 3).

ROBERT COLLYER - A BIOGRAPHICAL SUMMARY

The following is abstracted from the *Dictionary of American Biography*, volume 4:310-311, and from the *Sketch of Robert Collyer* (Willard & Goodykoontz 1926).

Robert Collyer (12/8/1823 - 11/30/1912) was born in Keighley, England. He worked in a cotton mill from the age of 7 to 14, then apprenticed to a blacksmith at Ilkley. He married Harriet Watson in 1846, she died in 1849. In the late 1840s he became a Methodist and started preaching. He married Ann Armitage of Ilkley in 1850 and on their wedding day they sailed for America. He worked as a blacksmith near Philadelphia, educated himself, and also worked as a Methodist lay preacher. He was a strong Abolitionist. Collyer found he didn't agree with the doctrines of Hell, and his strong anti-slavery beliefs led him away from the Methodist Church. Under the influence of Lucretia Mott and Dr. Wm. H. Furness became a Unitarian. In February 1859 he became Minister-at-large to the First Unitarian Church in Chicago. Collyer was ordained a Unitarian Minister in May, and became pastor of the Unity Church on the North side of Chicago. He was a successful minister and his congregation was known for its diversity of social classes. He was a principal in establishing the Liberal Christian League in 1866. A new stone Unity Church was dedicated in 1869. The church was destroyed in the Great Chicago Fire of 1871, but was rebuilt and enlarged. Collyer was a leader in the work of relief and reconstruction of Chicago after the fire. Collyer was good friends with Henry Wadsworth Longfellow. In 1879 he became pastor of the Unitarian Church of the Messiah in New York City, until 1903, and then was pastor emeritus until his death.

Collyer published volumes of sermons, and several lectures and books. Included are: *Life of A. H. Conant* (1868); *Ilkley, Ancient and Modern* (1885); *Father Taylor* (1906); *Clear Grit* (1913); and his autobiography, *Some Memories* (1905). Biographies include John H. Holmes, *Life and Letters of Robert Collyer* (1917); *Robert Collyer, a Memorial* (Unity Church, Chicago, 1914).

A statement published in the Boston Bazar, and reprinted in the Greeley Tribune on February 1, 1871 indicates his power as a speaker: "The bare announcement that he is to speak in any place fills the house to its utmost capacity".

20TH CENTURY HISTORY

In 1919 a measure for Park Improvement Bonds passed and some \$10,000 was slated for improvements to Collyer Park. The planned improvements were to install a sprinkling system, put in "sanitary closets", walks and seats, and to trim the trees. As the Longmont Ledger put it "It will cause people who pass by Collyer Park in the railroad trains to speak well of Longmont if they see a beautiful well-kept park from the car windows. But better than talk is the comfort the Eastside people will get out of the park when it is made thus beautiful and attractive" (Ledger 3/28/1919).

By May, 1919 the improvements to both Collyer and Thompson Parks were underway, under the direction of J.M. Gorham. DeBore and Pessen of Denver were the landscape artists. Gorham had 15 men working in the park, and requested people to follow the paths and not walk on the lawn or pick the flowers (Ledger 5/9/1919). The State Inventory Form for Collyer Park says that S.R. DeBoer (Denver) and W.G. Sutherland (Boulder) prepared plans for planting shrubs and trees, and a sprinkling system was installed.

Apparently around this time the name of the park and Collyer St. had been changed to Collier on street signs, through an error of the signmaker. The Ledger called for the mistake to be corrected: "The only reason we would like to see this name changed is because the original spelling of street and park has been changed by a blunder. They were named for Robert Collyer, of colony times, and in changing the spelling the honor to Mr. Collyer is lost, and the name has no significance" (5/9/1919). In April of 1920 the Ledger again railed against the misspelling of Collyer: "We still insist it is a shame that the spelling of Collyer Park should have been changed when the signs on the street corners were placed....The city never should have accepted the signs, no matter who was to blame for changing the spelling" (4/2/1920). The variation in spelling of Collyer was not a new incident. The plan of the Chicago-Colorado Colony townsite from 1871 has Collyer Park, but the street running north-south on the west side of the park is spelled Collier St.

On May 16, 1919 the Ledger stated "Work in Thompson and Collyer parks goes merrily on. Some criticism has been offered for the way the trees were cut down in Thompson Park, and criticism is bound to follow the cutting of trees in Collyer Park. But we must understand that this is the beginning of a laid out plan of a landscape gardener or park artist. We cannot all see the end." By the middle of June Gorham had received the blueprints of the plans of construction for Collyer Park and was proceeding (Ledger 6/13/1919).

In early April of 1920, the park was prepared to be seeded in grass. "The whole park will be seeded except a plat on the south where the swing is, and, which will be used as a children's playground, and also the center where a brick and concrete bandstand will be constructed" (Ledger 4/2/1920). The Longmont Ledger went on to say: "The cottonwoods were cleaned out last year and soon the planting of trees will commence. Mr. Gorham, who has charge, says the blueprints call for elm, 3 kinds of hard maple, birch, Colorado spruce and some juniper bushes. Some fancy varieties of shrubbery will be put out. This will be an attractive park before the summer is over.

The State Inventory Form for Collyer Park (SBL559) states that according to the Record of Minutes for the Longmont Parks Board (1915 to 1939) Pete Jacobsen was awarded the contract in May, 1920 to build a bandstand and comfort station in the center of the park. The form lists B.C. Viney as architect. The 1915 to 1939 Record of Minutes for the Longmont Parks Board are currently missing. The Record was used by Estes and Large of the Landmark Designation Commission for information to fill out the State Inventory Form, so it does exist. This is one of the few primary sources for historical information on the park, but it was unavailable for this study.

Bandstands were constructed in both Collyer and Thompson Parks, and were completed and in use by 1921. "J.M. Gorham, Superintendent of parks, commenced work with his helpers last Tuesday. Thompson and Collyer Parks took his first attention. He says he will have hanging boxes of vines and flowers from the band stands in both parks, and also flower beds in each park, and each bed will have a different appearance" (Ledger 3/4/1921)

The bandstand became an important aspect of the park. Concerts were held in the summer, with both the High School bands and the Longmont Municipal Band providing music. Eastside residents Ms. Irma Bledsoe and Ms. Kelly recall that the Longmont High School Band played weekly, in the evening. The park was sprayed for mosquitoes before concerts. The concerts were so popular that family groups made reservations to insure space. People sat on the grass, although there were some movable picnic tables (personal communication 2003).

The bandstand was raised in 1969. No pictures of the bandstand have been located.

Other improvements in the 1920s were a drinking fountain at the southwest corner, and two swings on the southern perimeter (Darby 1982).

The park played a role during the Depression. Darby (1982) relates that "many an unemployed rider of the rails dropped from freight trains nearby to scrounge the neighborhood for a bite to eat and a bit of work to pay for it. They were seldom turned away, but they did chop wood, mow lawns, etc. in exchange for food and a dollar or two to take them along their way". Camping or sleeping in municipal parks was commonplace before World War II, and its quite likely that Collyer Park saw a fair amount of transient use.

A photograph of a group of new citizens in Collyer Park is in the DPL-Western History Department. The photo was taken on July 2, 1939 by Harley E. Link, and is titled "Citizenship picnic at Collier Park. Gertrude Fonda, teacher". The title is hand-written on the back of the photo, and stamped on the back is: Federal Works Agency Works Projects Administration. The photo shows a group of adults and children posing under a large tree, "new" Longmont citizens, assumed to be immigrants who had achieved citizenship (Figure

Two tennis courts were built on the eastern side of the park in the 1940s. Prior to this the tennis courts were on the Columbine School grounds across Atwood St., but were moved when the new addition to Columbine was planned (Darby 1982).

The Record of Minutes for the Longmont Parks Commission from 1939 to 1959 is at the City Archives. It gives little direct information about Collyer Park other than some of the annual budget figures allocated to the park:

1944	\$714.24	1952	\$1236.00
1945	765.00	1954	1320.00
1948	1105.00	1955	1452.00
1949	1039.62	1956	2812.00
1951	1217.00		

In 1968 a 5 year development plan was presented to the Parks Advisory Board. \$200,00. was slated for updating park facilities (Times-Call 1/16/1968). Some of this was apparently used for the restrooms and shelter constructed in Collyer Park in the early 1970s.

In 1994, 35 children and youth from Longmont's Alternatives for Youth Program painted picnic tables and cleaned up the park (Times-Call 8/5/1994). Some 110 years after the first Arbor Day clean-up, the park remains an important part of the Eastside community.

CONCLUSIONS

Collyer Park has been an integral part of the Eastside Neighborhood since the founding of Longmont. As urban development intensified over the last 130 years, the role and importance of the park has also expanded, providing open space within the city. As Virginia Estes and Dorothy Large stated on the State Inventory Record "Collyer Park has been a haven of rest and recreation, not only to the neighborhood and adjacent Columbine School, but also to persons from all over the city, the St. Vrain Valley, and weary travelers since the early beginnings of the community"(1978).

Collyer Park does not have a dramatic history, and written records of the history and development of the park are meager. It is clear that the park has been well-loved and used by the community. The current buildings and structures in the park are modern, and are of insufficient age to be considered cultural resources. However the park itself, in its entirety is a cultural property worthy of designation. Collyer Park is eligible to the State Register of Historic Properties as a geographic place of significance to the Eastside Neighborhood and the City of Longmont.

REFERENCES

- Boyles, B.L.
1967 *The St. Vrain Valley...Its Early History.*
St. Vrain Valley Press, Longmont.
- Darby, Lorena
1982 Pumpkin Pie Days a Longmont Heritage
Longmont Daily Times-Call, 10/2/1982
- Duncan, Joyce
1981 *Community Review 1981*
Longmont Daily Times-Call.
- Estes, Virginia, and Dorothy Large
1978 State Inventory Form for Collyer Park (5BL559).
On file at the Office of Archaeology & Historic Preservation,
Colorado Historical Society.
- St. Vrain Valley Historical Association
1971 *They Came to Stay.*
Longmont Printing Co.
- Willard, James F, and Colin B. Goodykoontz
1926 *Experiments in Colorado Colonization 1869-1872.*
Historical Collections V.3, University of Colorado Press
- | | | |
|------------------|----------------------------|------------------|
| Longmont Ledger: | Longmont Daily-Times-Call: | Greeley Tribune: |
| 3/28/1919 | 1/16/1968 | 2/1/1871 |
| 5/9/1919 | 3/27/1971 | |
| 5/16/1919 | 8/5/1994 | |
| 6/13/1919 | | |
| 4/2/1920 | | |
| 3/4/1921 | | |

APPENDIX C: WALKING TOUR RESULTS

COLLYER PARK EVALUATION & WALKING TOUR RESULTS SUMMARY

From December 8, 2002 through January 4, 2003, the Collyer Park Master Plan Committee placed a self-guided walking tour asking individuals and families to explore and assess the overall park site and existing park features. The committee received thirty-two survey questionnaires. One third of the respondents are of Spanish descent.

A summary of the findings are listed below in the order as they appeared on the questionnaire with the exception of the shelters since comments related to one another. Responses to accessibility appear to have several meanings while the committee's intention was ADA accessibility.

1. Raised Annual Plant Bed (southwest corner of 6th & Collyer)

- 58% of the respondents felt that the raised planter bed is in good or excellent condition while the remainder were equally distributed between fair to somewhat poor condition.
- 56% requested no change while the remainder would like to see it renovated. Renovations included:
 - Use more plant varieties such as perennials, bulbs, xeriscape plants and plants that have winter interest (1/3 of the respondents made these suggestions).
 - Use natural stone (i.e., flagstone, moss rock) in place of the segmented masonry units.
- Other comments include:
 - Have more raised annual plant beds located at the other corners and/or within the park.
 - Whoever is taking care of this bed does a great job.
 - I love the flowers.

2. Shelters

New Shelter (southwest corner of site)

- The majority of the respondents felt that the new shelter, tables and grills are in good or excellent condition and are accessible.
- 67% requested no change while 21% would like to see it renovated, 8% want it removed and 4% want it relocated. Renovation suggestions include:
 - Make it more historical looking (i.e., fascia, detailing, paint).
 - Enlarge the shelter.
 - Provide a sidewalk connection from the existing sidewalk to the shelter for ADA access.
 - Have more tables and grills.
 - Replace the grills.

Shelter (northeast corner of site)

- Half of the respondents felt that the shelter, tables and grills are in good or excellent condition while the remainder were equally distributed between fair, somewhat poor and poor.
- 67% feel the shelter has good or excellent accessibility.
- 45% requested no change while 40% would like to see it renovated and 15% want it removed. Renovation suggestions include:
 - Have it match the other shelter.
 - Make it more historical looking to match the other shelter.

Comments for both shelters include:

- Litter from the shelters blow around the park and into neighboring yards.
- Consider their placement in the overall master plan.
- This shelter is used a lot (new shelter).
- Providing electricity and grills encourages parties and noise (new shelter).
- One shelter is enough remove the new one.
- Older one is cooler than the new one.

3. Public Restrooms Building

- 56% of the respondents felt that the public restrooms building is in somewhat poor to poor condition while 16% felt it is in fair condition and 28% stated good condition.
- The majority of respondents felt the restrooms are accessible.

- 62% would like to see it renovated while the remainder were equally distributed between remove, relocate or no change. Renovation and relocation suggestions include:
 - Have a more historical style building to fit the park character (i.e., logs and natural stone).
 - Modernize the restrooms (i.e., skylight, uni-sex style).
 - Include other features (i.e., drinking fountain, neighborhood meeting room, mural representing old Longmont).
 - Relocate it so that it is not the central feature of the park.
 - Relocate it if a bandstand works well.
- Other comments include:
 - Availability issues:
 - They are locked so I could not access the inside (1/3 could not access interior).
 - There are no instructions about when they are open or how to arrange for unlocking them.
 - Have the bathrooms open year round.
 - They are poorly maintained, smell, in need of repair, occasionally has graffiti, woman's sign is missing.

4. Playground

- The majority of the respondents felt that the playground, play equipment and seating are in fair to excellent condition and are accessible.
- 45% would like to see it renovated, 40% requested no change and 15% want it removed. Renovation suggestions include:
 - Repaint the equipment.
 - Keep the sand cleaner (trash/glass).
 - Add an ADA accessible area like other park playgrounds.
 - Enlarge the playground.
 - Have two separate play areas (young children; older kids) with age-appropriate equipment.
 - Benches: include more, replace old benches.
- Other comments include:
 - Children like the playground a lot and it is in a good central location.
 - It's small but nice.
 - The play area needs to be monitored for older kids bullying smaller kids.

5. Lighted Tennis Courts (tennis courts have recently been renovated)

- The majority of the respondents felt that the lighted tennis courts and lighting are in fair to excellent condition and are accessible.
- 95% requested no change while 5% would like to see it renovated. Renovation suggestions include:
 - Add center straps to the nets and a timer or off switch for the lights.
- Other comments include:
 - It looks great/very nice/awesome/excellent feature to the park.
 - I don't use these courts but they are used.
 - The sprinkler system waters the courts and this is a waste of water.

6. Sand Volleyball Court

- The majority of the respondents felt that the sand volleyball court is in fair to excellent condition, the size is adequate and it is accessible.
- 44% would like to see it renovated, 39% requested no change and 17% want it removed. Renovation suggestions include:
 - The edges need to be better defined and the court appears to need more sand.
- Other comments include:
 - Add a second court.
 - People use it a lot especially during the summer months.
 - People love the court.
 - If people don't use it, I would remove it.

7. Park Lighting

- 42% of the respondents felt that the park lighting is in good to excellent condition while 35% felt it is in fair condition and 23% stated poor condition.
- 75% would like to see it renovated and 25% requested no change. Renovation suggestions include:
 - Have historical lights/fixtures in the park.
 - The park lighting should have a more amber cast of light than white or fluorescent.

- Add more lights for better security/safety.
- Light the shelters.
- Need lights by the restrooms.

8. Park Benches (benches are fairly new)

- Over 70% of the respondents felt that the park benches are in good to excellent condition, the amount is adequate and they are accessible.
- 89% requested no change while the remainder were equally distributed between relocate and renovate. Relocation and renovation suggestions include:
 - Have a few benches located inside the park / add more benches away from the street.
 - Need concrete in front of and on the sides of the benches so that it is easier to shovel.
 - Use another material instead of wood because the wood is starting to splinter (overall condition varies).
- Other comments include:
 - I like the perimeter locations because kids and adults can enjoy the open space in the middle.

9. Multi-Use Grass Areas (north and east of the new shelter & west of playground)

- Over 80% of the respondents felt that the multi-use grass areas are in fair to excellent condition and the amount is adequate.
- 70% requested no change, 26% were undecided and 4% would like them changed to another use. Other uses include:
 - If the volleyball area is not used, make a soccer field.
 - Maybe have a small area to run dogs but do not take away the main grass areas.
- Other comments include:
 - The grass areas are great/nice/used a lot.
 - We need more grass areas.
 - Have a doggie mitt dispenser.
 - Increase trash pickup.

10. Existing Vegetation (trees and shrubs)

- Over 80% of the respondents felt that the trees are in good to excellent condition and over 70% felt that the shrubs are in good to excellent condition.
- 50% felt that the shade was just right, 25% requested more shade, 18% were undecided and 6% would like less shade. Suggestions include:
 - Provide more shade at the playground.
 - It is a good amount of shade and the grass grows without drying out.
- When asking about varieties, 62% were undecided, 31% requested more varieties and 8% felt that the varieties are just right. Suggestions include:
 - Review landscaping for historical look, size and location for a more aesthetic arrangement.
 - We do not need any more varieties.
- Other comments include:
 - Replace old trees as they die off.
 - The trees are terrific / I love the trees.
 - Shrubs provide hiding places.
 - Remove the Cedar trees and shrubs in the south area and add grass.

11. Are there any other existing features in the park that you like or dislike?

Like and why?

- Like/love park (5)
- Like/love park - Keep as is/Don't change much (3)
- Tennis Courts (2)
- Old Shade Trees (2)
- Boulders with historic plaques (2)
- It's informal feel, lots of places for kids to run and play.
- Is a place where can come to rest a while and to have a moment of peace.
- I like the park a lot because it is easy to get to and it's in a good location.

Dislike and why, suggested changes?

- Dogs (2):
 - Too many dogs off leash. Need more responsible pet owners.
 - There's a conspicuous absence of pet waste bags (and bag dispensers) at this park. Add bag dispensers.

- Litter (2):
 - Placing no parking signs would deter people from drinking in their cars and tossing litter out onto the park.
 - I dislike the shelters because they generate litter and food debris that litters the park.
- Collyer Street Traffic:
 - Collyer St.'s street traffic/speed poses daily dangers to the children crossing it. I would like to have Collyer St. speed lower in 1-2 blocks around the park and Columbine. Why no School Zone?
 - People parking and cruising on Sat. and Sun. Have no parking on Collyer Sat. and Sun.
- New "kiosk" board at new shelter is old and is rarely used. Take out the kiosk and replace with something well-built but see if there is a need.
- Nothing is consistent.

12. Other Comments

- Gazebo/Band Shelter (4)
 - Add historic gazebo/band stand.
 - Would like a band/concert shelter.
 - Maybe a gazebo or something.
 - Bandstand erected for music in the park.
- Have more activities (2)
 - I'd like to see some weddings.
 - Would like to see more city activities here.
- Historic plaques (2)
 - Interesting and well done plaques.
 - I'd like other plaques added on the other side describing the history of the two school buildings.
- I would like more emphasis on history and botanical names; provide bird baths, fountains, more tasteful historical retrospects featured; I would like every tree, shrub and plant identified with a small informational sign (species, origin, age).
- I think the park is a great multi-use facility and funds should go toward some where needed.
- The tennis court lighting, doesn't work in an historic district.

Walking Tour Survey Core Results

Received 32 questionnaires (9 in Spanish)

1= Excellent 5=Poor %= % of total responses

Raised Plant Bed	1 / %	2 / %	3 / %	4 / %	5 / %	Total Responses
overall condition	10 / 32.2	8 / 25.8	6 / 19.4	7 / 22.6	0	31
	remove	relocate	renovate	no change		
what to do with it	0	0	12 / 44.4	15 / 55.6		27

Relocate/renovate suggestions:

- More plants/variety (10)
 - More flower variety - 4
 - Include perennials - 3
 - Include bulbs - 2
 - Plant more flowers - 2
 - Need winter plants/winter interest (seed heads) - 2
 - Change plants or put a variety of plants instead of all the same
 - More plantings
- Xeriscape plants (4)
- Natural stone (3)
 - Use flagstone or stone
 - Use moss rock instead of artificial
 - Use historic materials - sandstone
- Other locations (3)
 - Have on other corner
 - More plant beds (perennials/bulbs) throughout park with informational descriptions
 - Put more in the center of the park - they are so pretty and they will entertain children and families

Other Comments:

- I like the idea of flowers here but I think they were pretty rough this past year - maybe will get more rain this year
- Whoever is taking care of this bed does a great job - I love the flowers (in season)

1= Excellent 5=Poor %= % of total responses

New Shelter (SW)	1 / %	2 / %	3 / %	4 / %	5 / %	Total Responses
overall condition	12 / 40	8 / 26.7	5 / 16.7	3 / 10	2 / 6.6	30
tables/grills	10 / 34.5	8 / 27.6	6 / 20.7	2 / 6.9	3 / 10.3	29
accessibility	13 / 46.4	4 / 14.3	5 / 17.9	4 / 14.3	2 / 7.1	28
	remove	relocate	renovate	no change		
what to do with it	2 / 8.3	1 / 4.2	5 / 20.8	16 / 66.7		24

Relocate/renovate suggestions:

- Historical Renovation (3)
Redo historically - 2
Paint/stain fascia, add historic detail to make look better
- Access (2)
Sidewalk/path to shelter - 2
- New grills and fire pit (1)
- Put in more tables and grills (1)
- Enlarge (1)

Other Comments:

- Litter (2)
Trash that is not in the bins need to be picked up
The shelters generate huge amount of litter that blows all around the park and into neighboring yards
- Consider placement in overall plan
- One is enough
- This shelter is very much used by all the people.

1= Excellent 5=Poor %= % of total responses

Restrooms	1 / %	2 / %	3 / %	4 / %	5 / %	Total Responses
overall condition	0	7 / 28	4 / 16	4 / 16	10 / 40	25
accessibility	4 / 15.4	8 / 30.8	6 / 23.1	3 / 11.5	5 / 19.2	26
	remove	relocate	renovate	no change		
what to do with it	2 / 9.5	3 / 14.3	13 / 61.9	3 / 14.3		21

Relocate/renovate suggestions:

- Other Features (5)
Add a Drinking fountain
Replace landscape timbers
Include a neighborhood meeting room in bldg.
It would be nice with a mural representing old Longmont
Have them so they are not so hidden by vegetation
- Other Renovation Suggestions (4)
Raze and replace with new secure restrooms
Restyle the bathroom. Uni-sex better?
Modernize the restrooms and utilities
Modernize featuring a skylight roof so it's bright inside; it should be designed of logs and natural stone
- Historical renovation (3)
Historic architecture
More historic style building
Make it look like it fits park character
- Location Suggestions (3)
Consider different placement in park
It should be relocated so that it is not the central feature of the park
Only move if a bandstand works well

Other Comments:

- Availability (9)
Locked so could not access inside - 6
Have bathrooms available/open year round - 3
When are they unlocked? How to arrange for unlocking? No instructions - 2
You might start by unlocking them so people can use them
It's never opened
- Cleanliness/Graffiti (5)
Poorly maintained - 3
It occasionally gets graffiti - 2
They smell and are in need of repair; they need to be rebuilt with a more reliable sewer and kept clean or remove

- Keep it cleaner
- Woman's sign is missing (2)
- This is a problem with the park - horrible - tear it down

1= Excellent 5=Poor %= % of total responses

Playground	1 / %	2 / %	3 / %	4 / %	5 / %	Total Responses
overall condition	6 / 22.2	6 / 22.2	10 / 37.1	5 / 18.5	0	27
play equipment	4 / 14.8	9 / 33.3	8 / 29.7	5 / 18.5	1 / 3.7	27
accessibility	8 / 29.7	9 / 33.3	5 / 18.5	5 / 18.5	0	27
seating	5 / 19.2	9 / 34.6	3 / 11.5	8 / 30.8	1 / 3.9	26
	remove	relocate	renovate	no change		
what to do with it	3 / 15	0	9 / 45	8 / 40		20

Relocate/renovate suggestions:

- Suggested playground elements (3)
 - Add accessible area like other parks
 - 2 playgrounds like at Roosevelt: 1 for young kids and 1 for older kids
 - Have equipment for young children under 3
- Repaint equipment (2)
 - Equipment needs painting
 - Repaint over graffiti
- Cleanliness (2)
 - Keep sand cleaner (trash/glass) - 2
 - Needs clean up

Playground Other Comments:

- Benches (2)
 - Could use more benches, I like benches
 - Benches old - replace
- Monitor - a few too many bully boys, 8-10 year olds
- Playgrounds are important - enlarging this one would make it better
- Looks good -
- Small but nice
- The children like the playground a lot and it is in a good location
- More rustic than orange

1= Excellent 5=Poor %= % of total responses

Shelter (NE)	1 / %	2 / %	3 / %	4 / %	5 / %	Total Responses
overall condition	3 / 12.5	9 / 37.5	3 / 12.5	6 / 25	3 / 12.5	24
tables/grills	3 / 13	8 / 34.8	4 / 17.4	4 / 17.4	4 / 17.4	23
accessibility	9 / 37.5	7 / 29.2	4 / 16.7	1 / 4.1	3 / 12.5	24
	remove	relocate	renovate	no change		
what to do with it	3 / 15	0	8 / 40	9 / 45		20

Relocate/renovate suggestions:

- Match other shelter (3)
 - Match other shelter - 2
 - Have it similar to SW shelter with electricity and new grills
- Historically to look like other shelter

Other Comments:

- Trash (2)
 - Trash cleanup needed more routinely - I watch crews empty bins but the same ground trash (cigarette butts) stays for days
 - Keep it cleaner
- Cooler than the new one
- Only accessible shelter in bad condition
- Picnic tables are one thing but providing electricity and grills encourages people to come and set up camp in the park; It can get noisy and parking is limited for others who are not there for BBQ's and birthday parties

1= Excellent 5=Poor %= % of total responses

Tennis Courts	1 / %	2 / %	3 / %	4 / %	5 / %	Total Responses
overall condition	3 / 16.7	6 / 33.3	3 / 16.7	4 / 22.2	2 / 11.1	18
lighting	3 / 15.8	7 / 36.8	4 / 21.1	3 / 15.8	2 / 10.5	19
accessibility	9 / 39.1	4 / 17.4	4 / 17.4	4 / 17.4	2 / 8.7	23
	remove	relocate	renovate	no change		
what to do with it	0	0	1 / 5.3	18 / 94.7		19

Relocate/renovate suggestions:

- Add center straps to the nets - they are in great need
- Add a timer or off switch to the lights

Other Comments:

- Looks great/very nice/excellent for neighborhood/ awesome - 4
- Best feature of park
- Lights don't come on
- Sprinkler system waters the courts and is a waster of water
- Locked gate is tough to get stroller through
- I do not make use of these courts but they are used!

1= Excellent 5=Poor %= % of total responses

Sand Volleyball	1 / %	2 / %	3 / %	4 / %	5 / %	Total Responses
overall condition	6 / 24	6 / 24	5 / 20	6 / 24	2 / 8	25
size	6 / 25	7 / 29.2	5 / 20.8	4 / 16.7	2 / 8.3	24
accessibility	7 / 29.2	8 / 33.3	4 / 16.7	2 / 8.3	3 / 12.5	24
	remove	relocate	renovate	no change		
what to do with it	3 / 16.7	0	8 / 44.4	7 / 38.9		18

Sand Volleyball Relocate/renovate suggestions:

- Sand/Edges (4)
 - Better define edges - 2
 - Rake sand
 - Might need more sand - looks a little thin
- Second court
 - Add another court - 2
- Need cement for access

Other Sand Volleyball Comments:

- Is it used? (3)
 - Do people use it? If not remove
 - Is it used? If not, I would prefer something else like a soccer field
 - Who places volleyball? I don't see much activity here and it doesn't interest me
- Seems is used a lot (great deal in summer) - 2
- People like/love it - 2

1= Excellent 5=Poor %= % of total responses

Park Lighting	1 / %	2 / %	3 / %	4 / %	5 / %	Total Responses
overall condition	4 / 15.4	7 / 26.9	9 / 34.6	0	6 / 23.1	26
	remove	relocate	renovate	no change		
what to do with it	0	0	15 / 75	5 / 25		20

Relocate/renovate suggestions:

- Security (4)
 - Spooky/scary at night - 2
 - Lighting by the restrooms is inadequate need more - 2
 - Add more lights not safe at night - 2
 - It would be nice if the lights could stay on more frequently before 10-10:30
- Historic renovation (3)
 - Historic lights/fixtures around the park - 3
 - Light the shelters
 - Park lighting should have a more amber cast of light than white or fluorescent

Other Comments:

- Don't know, I'm looking at them in day time
- It is very necessary to have lights in our park to avoid the crime
- There's enough light on the north side of the park

1= Excellent 5=Poor %= % of total responses

Park Benches	1 / %	2 / %	3 / %	4 / %	5 / %	Total Responses
overall condition	14 / 51.9	7 / 25.9	2 / 7.4	2 / 7.4	2 / 7.4	27
amount	11 / 42.4	5 / 19.2	3 / 11.5	5 / 19.2	2 / 7.7	26
accessibility	15 / 57.7	4 / 15.4	1 / 3.8	4 / 15.4	2 / 7.7	26
	remove	relocate	renovate	no change		
what to do with it		1 / 5.3	1 / 5.3	17 / 89.4		19

Relocate/renovate suggestions:

- Interior location (2)
Could add more away from street
A few more benches should be located inside the park along a winding walkway that transects the park from NE corner to SW corner
- Need concrete in front and on sides; easier to shovel and cleaner

Other Comments:

- Want more/more is better (2)
- Perimeter location (2)
Good around perimeter
I like them where they are so kids and adults can enjoy the open space in the middle
- Don't use wood in future - starting to splinter; overall condition varies

1= Excellent 5=Poor %= % of total responses

Grass Areas	1 / %	2 / %	3 / %	4 / %	5 / %	Total Responses
overall condition	10 / 43.5	6 / 26.1	4 / 17.4	2 / 8.7	1 / 4.3	23
size	9 / 39.1	5 / 21.8	5 / 21.8	3 / 13	1 / 4.3	23
	yes	no	undecided			
changed to specific use	1 / 4.3	16 / 69.6	6 / 26.1			23

Change suggestions:

- Expand into volleyball area to make soccer field
- Maybe a corner to run dogs off leash but don't take away main grass area

Other Comments:

- Open grass areas are mostly used - we need more of this
- Nice
- Please increase trash/dog poop pickup; grass areas are great

1= Excellent 5=Poor %= % of total responses

Vegetation	1 / %	2 / %	3 / %	4 / %	5 / %	Total Responses
trees overall condition	17 / 63	5 / 18.5	2 / 7.4	1 / 3.7	2 / 7.4	27
shrub overall condition	15 / 55.6	4 / 14.8	1 / 3.7	4 / 14.8	3 / 11.1	27
	more shade	less shade	undecided	just right		
	4 / 25	1 / 6.3	7 / 18.7	8 / 50		20
	more varieties	less varieties	undecided	just right		
	4 / 30.8	0	8 / 61.5	1 / 7.7		13

Shade/variety suggestions:

- Playground Shade (4)
More shade at playground only - 4
Trees by playground
Playground equipment burns in summer
- With the new planted trees, shade should be better soon
- Replace old trees as they die off
- Review landscaping for historical look, size and location of shrubbery for more aesthetic arrangement
- Remove Cedar trees in south area; remove shrubs and add grass
- More per feet

Other Comments:

- No more varieties
- Same, it is a good amount and the grass grows without drying out
- Shrubs icky and provide hiding places
- The trees are terrific - I love them. Of course they need a ton of maintenance to survive in this God forsaken desert - I wish dogwood, red bud and azaleas would live here

Are there any other existing features in the park that you like or dislike?

Like and why?

- Like/love park (5)
It is a great park - 2
I'd like to see some weddings
It's overall a joy - that is why we bought our house
- Like park - Keep as is/Don't change much (3)
Would like to see more city activities here
I think the park is a great multi-use facility and funds should go toward some where needed
- Tennis Courts (2)
Hate tennis court lighting, doesn't work in historic district
- Old Shade Trees (2)
- Boulders with historic plaques (2)
Interesting and well done
I'd like other ones added on the other side describing the history of the two school buildings
- It's informal feel, lots of places for kids to run and play
- Is a place where can come to rest a while and to have a moment of peace
- The park pleases me a lot because it is easy to get to and in a good location

Dislike and why, suggested changes?

- New "kiosk" board at new shelter looks horrible and never or rarely used - not installed level. Take out the kiosk and replace with something well-built but see if there is a need.
- Too many dogs off leash. Need more responsible pet owners.
- Collyer St.'s street traffic/speed poses daily dangers to the children crossing it. On Collyer St. lower the speed in 1-2 blocks around the park and Columbine. Why no School Zone?
- People parking and cruising on Sat. and Sun. Have no parking on Collyer Sat. and Sun.
- Many of our neighbors are pigs and there are always empty beer cans along the 6th and 7th St. park edges. Placing no parking signs would deter people from drinking in their cars and tossing their dead soldiers.
- There's a conspicuous absence of pet waste bags (and bag dispensers) at this park. Add bag dispensers.
- I dislike shelters because they generate litter and food debris that litters the park
- Nothing is consistent

Other Comments

- Gazebo/Band Shelter (4)
Add historic gazebo/band stand
Would like a band/concert shelter
Maybe a gazebo or something
Bandstand erected for music in the park
- I would like more emphasis on history and botanical names; provide bird baths, fountains, more tasteful historical retrospects featured; I would like every tree, shrub and plant identified with a small informational sign (species, origin, age)

Contact Information

Terri Goon, 741 Martin St., 303-773-8825; t_goon@hotmail.com
Jennifer Pollman, 352 Collyer, 303-774-8185, ideas@pollman.com
Curtis Jacobson, 429 Martin St., 720-652-0237
Dwight Harding, 537 Atwood St., 303-651-7230, haahaw1@msn.com
Michelle Pulley, 540 Emery St., michelle.pulley@worldnet.att.net
Maggie Van Vliet, 517 Collyer St., 303-776-5383, MaggieVV@msn.com
K.D. Leka and Biff Williams, 647 Collyer St., 303-776-1515
Patty Leonard, 700 Atwood St.
Bertha Yañez, 2137 Spencer St., 800501, 303-249-6329 (Spanish)
Veronica Orona, 600 Martin St. #D23, 303-678-9720 (Spanish)

COLLYER PARK MASTER PLAN

DESIGN PROGRAM RECOMMENDATIONS

The information used to produce this program was obtained through a compilation of findings from a self-guided walking tour for individuals and families, a neighborhood meeting and from the park historical report. These recommendations will be considered along with other items including budget, maintenance and safety considerations.

Development Goals. The following development goals address the overall park site. They are listed in random order.

- Enhance the "historical" character of the site.
 - Incorporate period lighting, architecture, site furniture and signage.
 - Create a park that has continuity yet still maintains diversity.
- Preserve the open multi-use grass areas.
 - Investigate:
 - relocating some of the small trees in the northwest field to the area north of the tennis courts.
 - removing the cedar trees near 6th Avenue.
 - Identify areas to remain as open grass areas and inform the City Forester.
- Replace older trees as they die off.
 - Incorporate more varieties including evergreen species.
 - Plant clusters of trees while retaining the open grass areas.
 - Work with the City Forester to prepare a tree list with botanical and common names.
- Keep shrub plantings to a minimum.
 - Consider removing some of the existing junipers to reduce hiding places yet retain the ones that provide good street/noise buffers.
- Incorporate raised planter beds at each corner of the park.
 - Keep the existing raised planter bed (southwest corner). Consider replacing the segmented masonry units with natural stone.
 - Incorporate more plant varieties (i.e., perennials, ornamental grasses, bulbs, xeriscape plants) instead of having all annual plants.
- Have the same style of benches throughout the park.
 - Keep the exterior park benches. Examine these benches and replace damaged slats. For some of the benches, increase the size of the concrete pads for ADA accessibility.
 - Remove and replace the benches by the playground.
 - Place a bench near the volleyball court.
 - Explore other areas within the park for additional bench locations without overcrowding the park.
- Renovate the interior park lighting.
 - Have historical lights and fixtures with a more amber cast of light.
 - Examine relocating the existing lights and adding more lights for better security and safety.

Desirable Park Facilities & Recreation Activities. The following facilities and activities are recommended to remain as they are or for redevelopment. These desirable elements are listed in order of preference.

1. Retain the lighted tennis courts.
 - Ask the city to place signage by the light button.
 - Inform the city about the irrigation system overspraying the courts.

2. Renovate the public restrooms building.
 - Consider having vines grow on the building and/or adding a mural of the Historic Eastside Neighborhood until it is renovated.
 - Have a more historical looking building to fit the park character (i.e., natural stone, brick).
 - Consider adding skylights and interior lights.
 - If a bandstand is added to the park, consider incorporating the restrooms into this feature (i.e., Zokolo).
3. Incorporate two shelters that have similar architectural elements.
 - Keep the shelters in approximately the same locations and have them both ADA accessible.
 - Retain the amount of tables, grills and trash receptacles for each shelter.
 - For the new shelter (southwest), research adding detailing (i.e., fascia, cupola, brick or stone columns) to give it an historical look.
 - For the older wooden shelter (northeast), remove and replace it with a more historical looking shelter.
4. Renovate the playground while keeping it in the same central location.
 - Have one playground for all ages.
 - Make the playground ADA accessible.
 - Add more trees so the playground has better shade.
5. Retain the sand volleyball court.
6. Include other site amenities.
 - Install new trash receptacles.
 - Install doggie mitt dispensers.
 - Provide bilingual signage (English and Spanish) for all signs within the park. Add historical plaques with Spanish text next to the existing plaques.
7. Contemplate other recreation elements.
 - Explore re-creating a bandstand since there was one in the original park. Keep it centrally located.
 - Research having an expression wall for youth.
 - Consider having skateboard elements by the Atwood street sidewalk.
 - Investigate having a water feature (i.e., fountain, boulder with water running over it) in the park.

COLLYER PARK MASTER PLAN 2ND MEETING SUMMARY

The Consultant conducted the second neighborhood meeting on Wednesday, June 25 from 6:00 p.m. to 8:00 p.m. at the southwest shelter in Collyer Park. Nine people attended the second neighborhood meeting to review and make comments about the preliminary master plan. Their comments are below.

Open Discussion: All participants agreed with the design program recommendations and liked the preliminary master plan (i.e., overall design, revised playground layout, central gazebo, informal skate area, designated open space areas, relocation of interior park lighting, new restroom building, etc.) with the exception of one individual. This attendee did not want to preserve the open space or have an informal skating area because of the increase of noise these elements may generate.

All attendees preferred:

- The historical period lighting that is located on the 500 block of Atwood Street, 4th Avenue between Collyer and Martin Streets, and on 6th Avenue east of Baker Street.
- Replacing the slats of the existing exterior wood benches with recycled plastic lumber.
- The proposed interior benches and trash receptacles.
- Raising and constructing a new restroom building rather than modify the existing one.
- Using flagstone instead of brick for the shelters' and central gazebo posts, the new bathroom facade and the raised plant beds.

Their suggested changes were:

- Retain the electrical outlets at the southwest shelter because they are used for the Carriage Rides but relocate them and have them lockable.
- Provide a small low planting buffer between the informal skate area and the existing sidewalk to avoid potential conflicts with pedestrians and skaters.
- Remove one spring toy in the revised playground and replace it with a sand digger.
- Have vines grow on the existing restroom building until it can be replaced.

Next Steps: The Consultant shall revise the design and present the final master plan with updated costs to the Historic Eastside Neighborhood board at their July meeting.

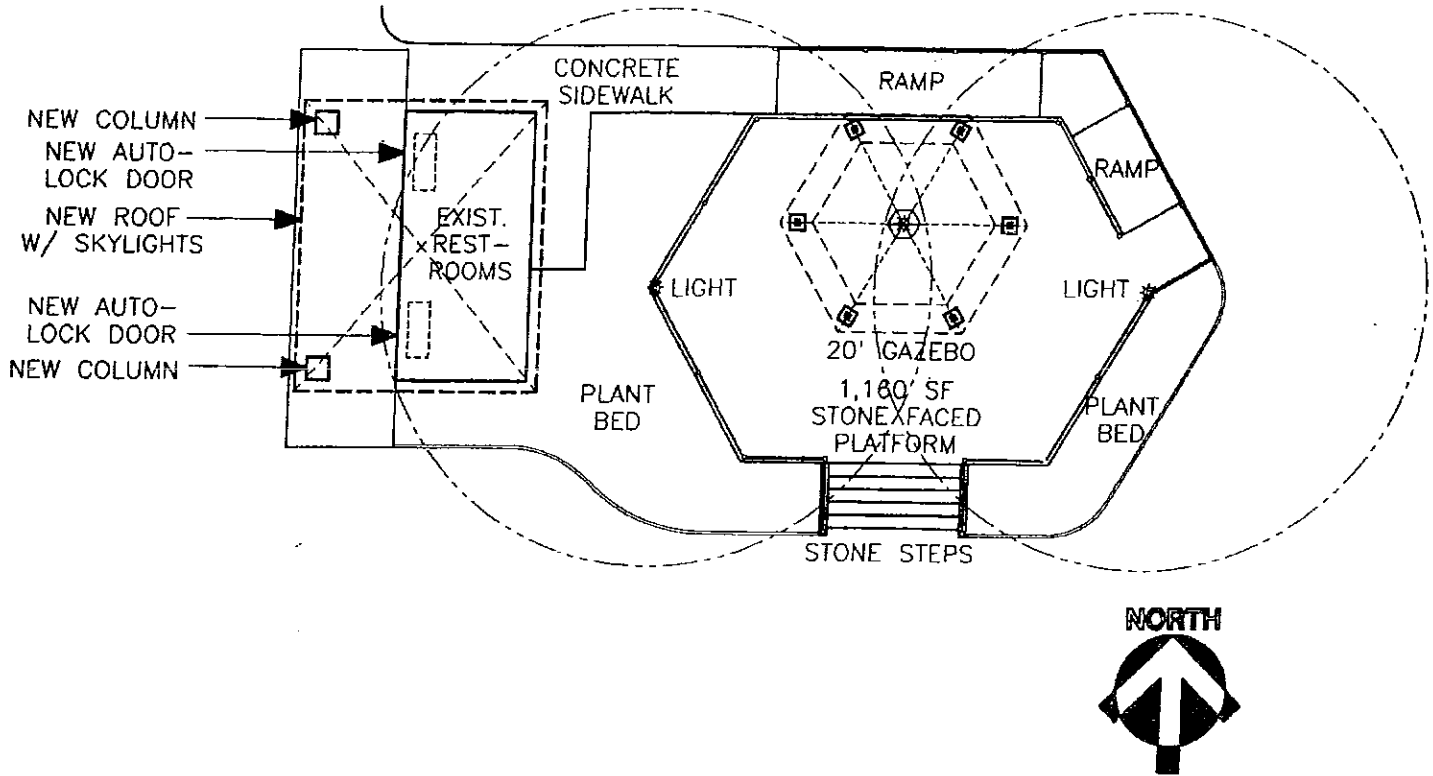
ATTENDEES (9)

Doug Brown, 1448 Hilltop Dr
Sandy Fallingin, 510 Baker
Paula Fitzgerald, 419 Emery
Kevin Hodgden, 601 Collyer
Rick Jacobi, 419 Collyer
Joyce Jensen, 500 Atwood
Michelle & Nathan Pulley, 540 Emery
Sue Ann Vollmer, 400 Baker

Consultants:

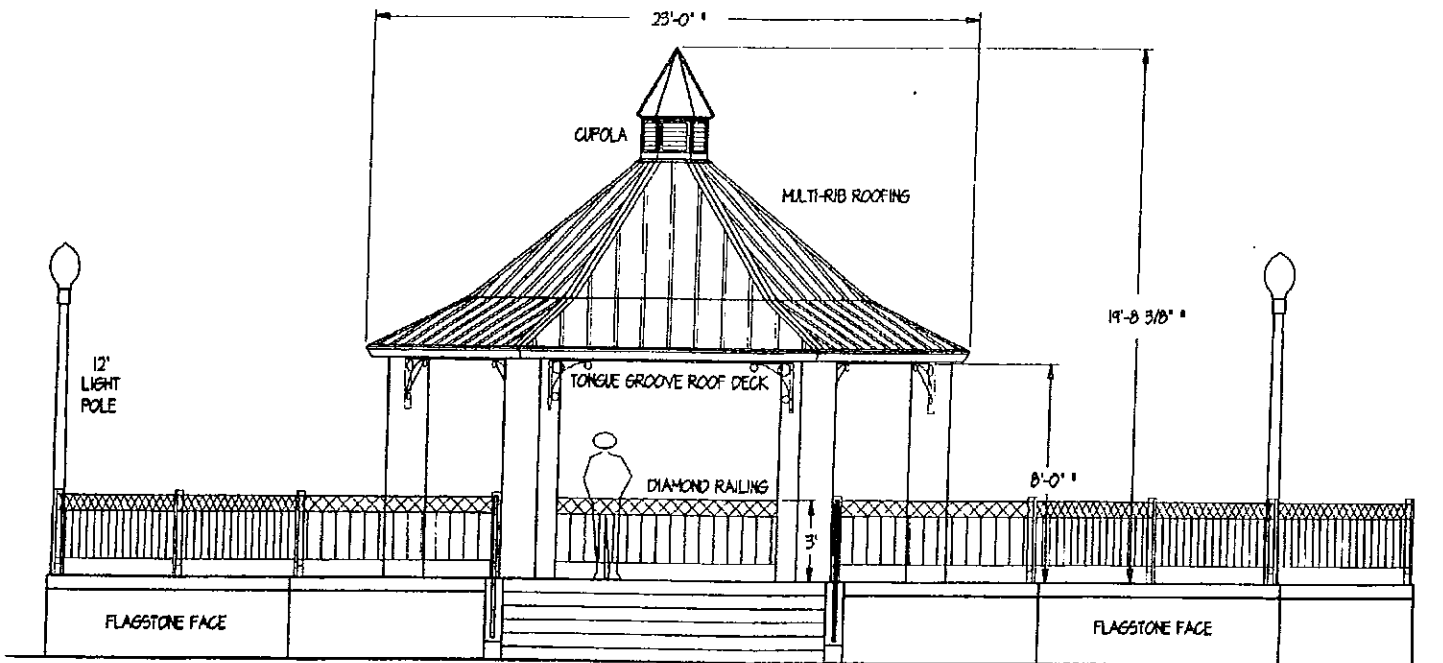
Nancy Eletto: Play Environments, LLC
Bruce Pizzimenti: Play Environments, LLC

Collyer Park Proposed Elevated Gazebo



Above: Modified Restroom w/Elevated Gazebo (not to scale)

Below: Elevated Gazebo Looking North (not to scale)



Collyer Park Proposed Lighting Fixture & Site Furniture



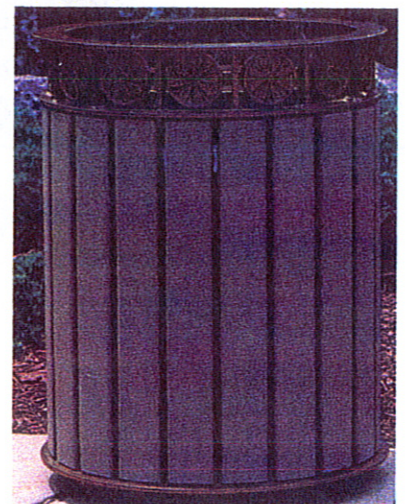
Above: Proposed Pedestrian Scale Park Light Pole - existing light pole on Atwood - 500 block; 4th Avenue between Collyer and Martin; 6th Avenue east of Baker (Unique Solutions distributed by Wesco; obtain from City of Longmont)

Below Left & Right: Proposed Interior Park Bench & Proposed Trash Receptacle from recycled plastic (Bench 143; Trash Receptacle 124PL, DuMor)

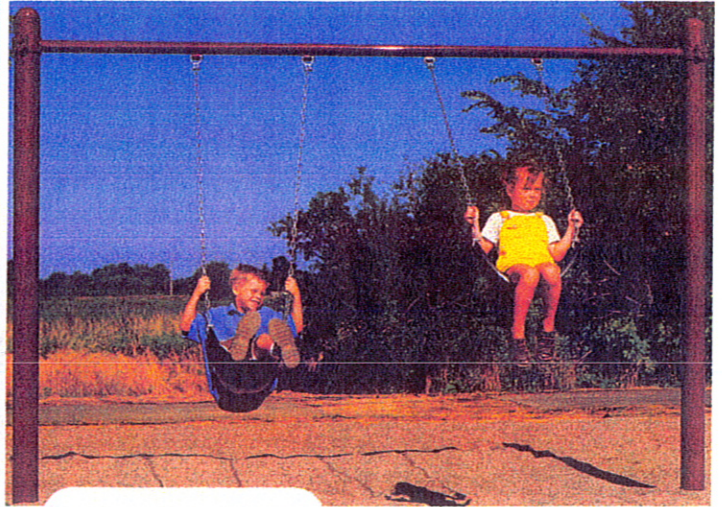
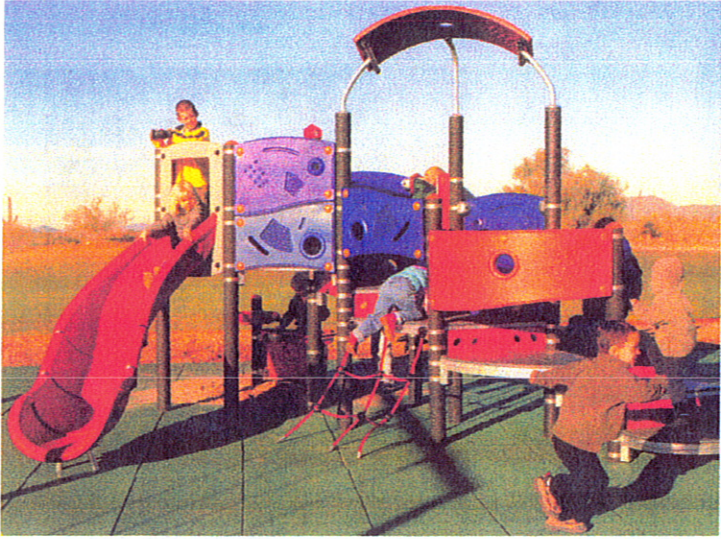
Not Shown: Existing Metal Shelter - southwest corner 24' x 24' square shelter (Steel Frame SLF-M Model Cube Pavillion by RCP Shelters); add cupola and ornamentation

Not Shown: Proposed New Shelter to match revised existing metal shelter

Not Shown: Proposed Elevated Gazebo w/cupola - Ironwood Hexagonal 20' Gazebo with Sarasota Shelter handrail ornamentation & Sarasota ornamental handrailing for ramp (Polygon); see elevation and plan view



Collyer Park Proposed Playground Equipment

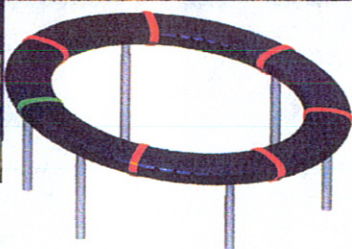
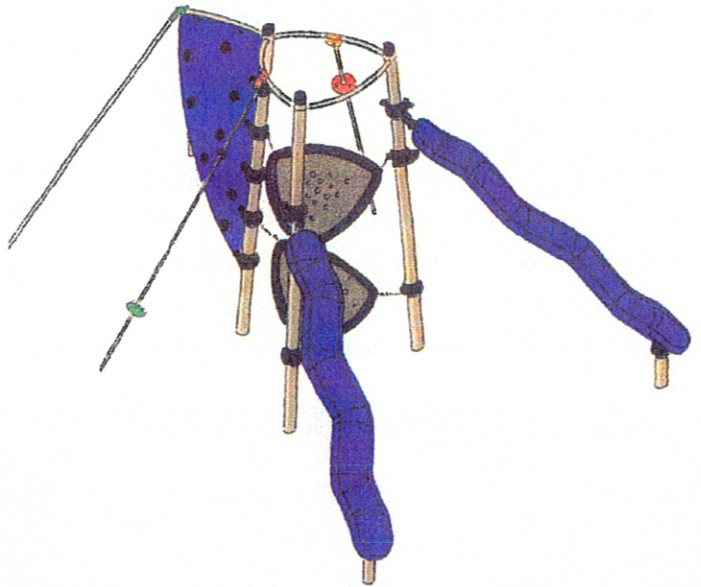


Above Left: Flow 1 Modified Play Structure - straight slide, curved slide, boarding net, hammock, megaphone, binoculars, spinning wheel, play panels (Kompan)

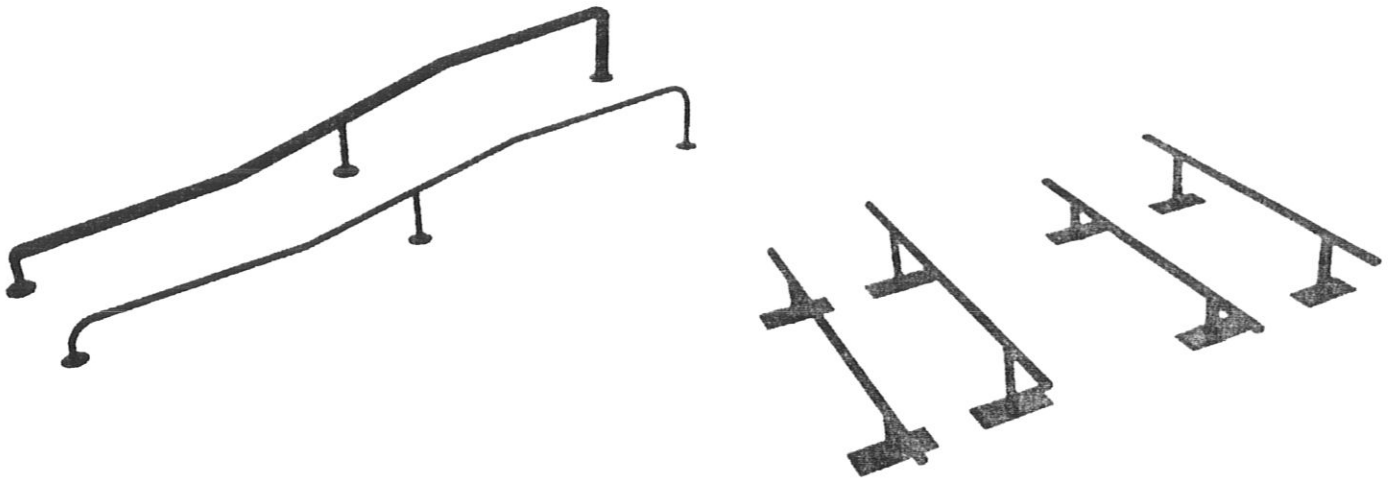
Above Right: Single Post Swings - 3 bays with 2 full bucket seats and 4 sling seats (Landscape Structures)

Below Left: Supernova - large slanting ring is set in motion by children (Kompan)

Below Right: Antares Play Structure - 2 slanting tubular plates, tower, 2 rocking tubes, climbing wall, climbing pillars



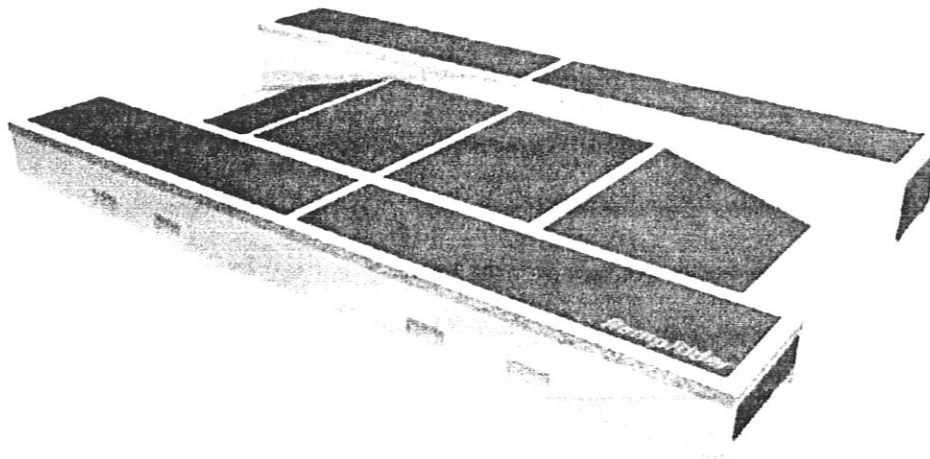
Collyer Park Proposed Informal Skate Area Components



Above Left: Kinked Rail - ranges in height from 6" to 24" (Woodward Ramps & Rails)

Above Right: Grind Rail - 10" round and 10" height (RampRider)

Below: Fun Pad - 1.5' height (Ramp Rider)



PLAY ENVIRONMENTS, LLC
 616 KIMBARK STREET
 LONGMONT, CO 80501

FINAL MASTER PLAN

PROJECT: COLLYER PARK MASTER PLAN
 CLIENT: HISTORIC EASTSIDE NEIGHBORHOOD ASSOCIATION

DATE: July 10, 2003

ITEM DESCRIPTION	QUANTITY	CONSULTANT'S ESTIMATE	
		UNIT	TOTAL
BID SCHEDULE			
NW Open Play Area/Other Park Landscaping			\$7.20
1 Relocate Existing Tree (City Forester)	2 EA	\$0.00	\$0.00
2 Remove Shrub Clumps (City Forester)	3 EA	\$0.00	\$0.00
3 Remove Existing Tree (City Forester)	1 EA	\$0.00	\$0.00
4 Reseed Lawn Damaged By Removal/Relocation	60 SF	\$0.12	\$7.20
Park Planters on Corners			\$14,497.45
1 Remove Existing CMU's	1 LS	\$300.00	\$300.00
2 Stone Retaining Walls	740 SFF	\$14.00	\$10,360.00
3 Remove Existing Tree (City Forester)	2 EA	\$0.00	\$0.00
4 Soil Preparation	685 SF	\$0.12	\$82.20
5 Deciduous Tree (2" cal)	1 EA	\$400.00	\$400.00
6 Perennials (1 gal.)	81 EA	\$10.00	\$810.00
7 Groundcovers (F-15)	4 EA	\$10.00	\$40.00
8 Ornamental Grasses (1 gal.)	20 EA	\$12.00	\$240.00
9 Weed Barrier	685 SF	\$0.25	\$171.25
10 Wood Chip Mulch (3" deep)	6 CY	\$45.00	\$270.00
11 Reseed Lawn Damaged By Construction	200 SF	\$0.12	\$24.00
12 Revise Irrigation System	1 LS	\$1,800.00	\$1,800.00
Site Furnishings			\$20,309.00
1 Exist. Exterior Benches: Replace Wood w/Trex	10 EA	\$200.00	\$2,000.00
2 Existing Bench Pads: 6" Deep Concrete	282 SF	\$4.50	\$1,269.00
3 New 6' Bench (w/back)	4 EA	\$940.00	\$3,760.00
4 New Trash Receptacle (31 gal.)	10 EA	\$900.00	\$9,000.00
5 Bike Rack	2 EA	\$340.00	\$680.00
6 New Doggie Mitt Dispenser	1 EA	\$150.00	\$150.00
7 New Park Kiosk	1 EA	\$1,200.00	\$1,200.00
8 New Plaque	1 EA	\$750.00	\$750.00
9 New Stone Monument & Plaque	1 EA	\$1,500.00	\$1,500.00
Parking Lighting			\$13,000.00
1 Remove Existing Light Poles	5 EA	\$200.00	\$1,000.00
2 New Pedestrian Scale Light Pole	8 EA	\$1,500.00	\$12,000.00
New Restroom Building			\$80,833.00
1 Remove & Dispose Off-site Exist. Planter/Shrub	1 LS	\$400.00	\$400.00
2 Sawcut & Remove Existing Concrete Walk	350 SF	\$1.50	\$525.00
3 Remove & Dispose Off-site Exist. Restroom Bldg	1 LS	\$4,000.00	\$4,000.00
4 6" Deep Concrete Walk	280 SF	\$4.50	\$1,260.00
5 New Stone-faced Uni-sex Restroom Building	1 EA	\$74,000.00	\$74,000.00
6 Reseed Lawn Damaged By Construction	400 SF	\$0.12	\$48.00
7 Revise Irrigation System	1 LS	\$600.00	\$600.00

Modify Existing Restroom Building			\$17,040.00
1 Demo Roof	1 LS	\$1,200.00	\$1,200.00
2 Face w/Stone	480 SFF	\$8.00	\$3,840.00
3 New Doors & Locks	2 EA	\$1,800.00	\$3,600.00
4 New Roof w/Skylights	1 LS	\$4,800.00	\$4,800.00
5 Stone Columns	2 EA	\$1,400.00	\$2,800.00
6 Interior Lights	1 LS	\$800.00	\$800.00
Renovate Existing Shelter (SW Corner)			\$10,166.80
1 Remove Existing Sod	400 SF	\$0.20	\$80.00
2 6" Deep Concrete Walk	260 SF	\$4.50	\$1,170.00
3 Cupola	1 EA	\$1,200.00	\$1,200.00
4 Ornamentation	1 LS	\$2,400.00	\$2,400.00
5 Stone Columns	4 EA	\$1,200.00	\$4,800.00
6 Relocate Grill	1 EA	\$200.00	\$200.00
7 Relocate Electrical Outlets	1 LS	\$300.00	\$300.00
8 Reseed Lawn Damaged By Construction	140 SF	\$0.12	\$16.80
New Shelter (NE Corner)			\$32,127.50
1 Remove Existing Sod	1,300 LF	\$0.20	\$260.00
2 Sawcut & Remove Existing Concrete Pad	420 LF	\$1.50	\$630.00
3 Remove & Dispose Off-site Exist. Wood Shelter	1 LS	\$3,000.00	\$3,000.00
4 6" Deep Concrete Pad	875 SF	\$4.50	\$3,937.50
5 Shelter with Footings (cupola, ornamentation)	1 EA	\$18,500.00	\$18,500.00
6 Stone Columns	4 EA	\$1,200.00	\$4,800.00
7 Relocate Grill	2 EA	\$200.00	\$400.00
8 Reseed Lawn Damaged By Construction	SF	\$0.12	\$0.00
9 Revise Irrigation System	1 LS	\$600.00	\$600.00
Play Area			\$109,227.50
1 Sawcut & Remove Existing Playground Curb	200 LF	\$2.25	\$450.00
2 Sawcut & Remove Existing Concrete Walk	1,625 SF	\$1.50	\$2,437.50
3 Remove Existing Sod	900 SF	\$0.20	\$180.00
4 Remove & Dispose Off-site Existing Sand	1 LS	\$600.00	\$600.00
5 Remove & Dispose Off-site Existing Equipment	1 LS	\$1,800.00	\$1,800.00
6 6" Deep Concrete & Pads	1,037 SF	\$4.50	\$4,666.50
7 Play Area Access Ramp	1 EA	\$900.00	\$900.00
8 Concrete Thickened Edge	130 LF	\$16.00	\$2,080.00
9 14" Concrete Playground Curb	205 LF	\$18.00	\$3,690.00
10 12" Deep Wood Fibre Safety Surfacing w/8 mats	4,670 SF	\$3.25	\$15,177.50
11 12" Deep Sand	6.3 CY	\$40.00	\$252.00
12 4" Perforated PVC Pipe	75 LF	\$18.00	\$1,350.00
13 4" Solid PVC Pipe	25 LF	\$16.00	\$400.00
14 Flow 1 Modified Play Structure	1 EA	\$17,000.00	\$17,000.00
15 Supernova	1 EA	\$6,500.00	\$6,500.00
16 Antares	1 EA	\$16,700.00	\$16,700.00
17 Play Structure	1 EA	\$28,600.00	\$28,600.00
18 8' High Single Post Swings (3-Bay)	1 EA	\$2,800.00	\$2,800.00
19 Accessible Sand Digger	1 EA	\$840.00	\$840.00
20 Sand Digger	1 EA	\$860.00	\$860.00
21 Reseed Lawn Damaged By Construction	1,200 SF	\$0.12	\$144.00

22 Revise Irrigation System	1 LS	\$1,800.00	\$1,800.00
New Elevated Gazebo			\$122,144.60
1 Remove Existing Sod	2,400 LF	\$0.20	\$480.00
2 Relocate Existing Tree (City Forester)	2 EA	\$0.00	\$0.00
3 Remove Existing Tree (City Forester)	1 EA	\$60.00	\$60.00
4 ADA Concrete Ramp (300 SF)	1 LS	\$2,100.00	\$2,100.00
5 Stone Steps w/6" Risers (70 SF)	1 LS	\$1,550.00	\$1,550.00
6 Stone Faced Platform (1,160 SF)	1 LS	\$14,600.00	\$14,600.00
7 Gazebo w/cupola, ornamentation, railing	1 EA	\$38,000.00	\$38,000.00
8 Stone Columns	6 EA	\$1,200.00	\$7,200.00
9 Ornamental Railing	185 LF	\$40.00	\$7,400.00
10 Flagstone Steppers	21 SF	\$5.00	\$105.00
11 Soil Preparation	680 SF	\$0.12	\$81.60
12 Deciduous Tree (2" cal)	3 EA	\$400.00	\$1,200.00
13 Ornamental Tree (1.5" cal)	3 EA	\$360.00	\$1,080.00
14 Shrubs (5 gal.)	15 EA	\$32.00	\$480.00
15 Groundcovers (F-15)	6 EA	\$10.00	\$60.00
16 Landscape Edger	100 LF	\$400.00	\$40,000.00
17 Weed Barrier	680 SF	\$0.25	\$170.00
18 Wood Chip Mulch (3" deep)	6 CY	\$45.00	\$270.00
19 Reseed Lawn Damaged By Construction	900 SF	\$0.12	\$108.00
20 Revise Irrigation System	1 LS	\$3,200.00	\$3,200.00
21 Electrical (2 lamp posts, lock outlet, gazebo light	1 LS	\$4,000.00	\$4,000.00

Skate Area			\$14,990.45
1 Remove Existing Sod	925 LF	\$0.20	\$185.00
2 6" Deep Concrete	925 SF	\$4.50	\$4,162.50
3 Grind Rail	1 EA	\$500.00	\$500.00
4 Fun Pad	1 EA	\$7,000.00	\$7,000.00
5 Kinked Rail	1 EA	\$1,500.00	\$1,500.00
6 Soil Preparation	535 SF	\$0.12	\$64.20
7 Shrubs (5 gal.)	12 EA	\$32.00	\$384.00
8 Weed Barrier	535 SF	\$0.25	\$133.75
9 Wood Chip Mulch (3" deep)	5 CY	\$45.00	\$225.00
10 Reseed Lawn Damaged By Construction	300 SF	\$0.12	\$36.00
11 Revise Irrigation System	1 LS	\$800.00	\$800.00

TOTAL COSTS W/NEW RESTROOM BUILDING \$417,303.50

TOTAL COSTS W/RENOVATED RESTROOM BUILDING \$353,510.50

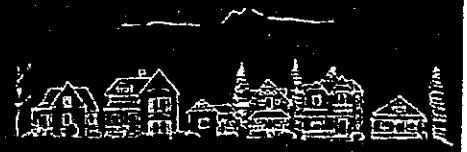
NOTE: no contingency, mobilization, survey work, construction documents preparation have been included in costs

COLLYER PARK MASTER PLAN

GRANT PROJECT BUDGET

<i>Materials/Vendors</i>	<i>Revised Request</i>	<i>Spent</i>	<i>Match</i>
Cultural Resources Historians Native Cultural Services	\$1,200.00	\$1,200.00	\$0
Printing Costs	\$310.00	\$ 384.99	\$0
Postage	\$ 0	\$0	\$0
Supplies (paper, etc.)	\$50.00	\$ 104.26	\$20.00
Spanish Translator/Interpreter	\$1,000.00	\$ 417.50	\$0
Website	\$100.00	\$0	\$0
Professional Park Planner Consultant Play Environments, LLC	\$1,450.00	\$1,450.00	\$1,250.00 PE donation
Professional Land Surveyor Big Horn Land Surveying	\$2,200.00	\$2,200.00	\$0
Paula Fitzgerald, Meeting Facilitator (6 hrs @ \$10.00/hr)	\$0	\$0	\$60.00
Preparation of Drawings/Presentation Materials	\$ 150.00	\$ 267.30	\$0
Total Volunteer Hours (314 hrs @ \$10.00/hr)	\$0	\$0	\$3,140.00
Total	\$6,460.00	\$6,024.05	\$3,610.00
Amount left over from City Grant		(\$ 435.95)	
Actual Total Project Cost Including Match	\$9,634.05		
Percent of Total		62.53%	37.47%

HISTORIC EASTSIDE
NEIGHBORHOOD ASSOCIATION



LA EVALUACION DEL PARQUE DE COLLYER
Y EXCURSION

FORME EN
EL ESPAÑOL

HISTORIC EASTSIDE
NEIGHBORHOOD ASSOCIATION



HISTORIC EASTSIDE
NEIGHBORHOOD ASSOCIATION



COLLYER PARK EVALUATION & WALKING TOUR

FORM IN ENGLISH

HISTORIC EASTSIDE
NEIGHBORHOOD ASSOCIATION



**HISTORIC EASTSIDE
NEIGHBORHOOD ASSOCIATION**



COLLYER PARK EVALUATION & WALKING TOUR

STATION #5

**LA EVALUACION DEL PARQUE DE COLLYER
Y EXCURSION**

LA ESTACION #5

**HISTORIC EASTSIDE
NEIGHBORHOOD ASSOCIATION**



**HISTORIC EASTSIDE
NEIGHBORHOOD ASSOCIATION**



COLLYER PARK EVALUATION & WALKING TOUR

PLACE COMPLETED FORMS HERE

**LA EVALUACION DEL PARQUE DE COLLYER
Y EXCURSION**

COLOQUE LAS FORMAS COMPLETADAS AQUÍ

**HISTORIC EASTSIDE
NEIGHBORHOOD ASSOCIATION**



Collyer Park Evaluation & Walking Tour Results Summary

From December 8, 2002 through January 4, 2003, the Collyer Park Master Plan Committee placed a self-guided walking tour asking individuals and families to explore and assess the overall park site and existing park features. The committee received thirty-two survey questionnaires. One third of the surveys were in Spanish.

A summary of the findings is listed below in the order as they appeared on the questionnaire with the exception of the shelters since comments related to one another. Responses to accessibility appear to have several meanings while the committee's intention was ADA accessibility.

Raised Annual Plant Bed (southwest corner of 6th & Collyer). 58% of the respondents felt that the raised planter bed is in good or excellent condition while the remainder were equally distributed between fair to somewhat poor condition. 56% requested no change while the remainder would like to see it renovated with more plant varieties and using natural stone. Several people would like to see more raised annual plant beds located at the other corners and within the park.

Shelters. New Shelter (southwest corner of site) The majority of the respondents felt that the new shelter, tables and grills are in good or excellent condition and are accessible. 67% requested no change while 21% would like to see it renovated, 8% want it removed and 4% want it relocated. Renovation suggestions include: make it more historical looking, enlarge the shelter, provide a sidewalk connection and, have more tables and grills.

Shelter (northeast corner of site) Half of the respondents felt that the shelter, tables and grills are in good or excellent condition while the remainder were equally distributed between fair, somewhat poor and poor. 67% feel the shelter has good or excellent accessibility. 45% requested no change while 40% would like to see it renovated and 15% want it removed. Renovation suggestions include: have it match the other shelter, and make it more historical looking to match the other shelter.

Comments for both shelters include: litter from the shelters blow around the park and into neighboring yards, consider their placement in the overall master plan, the new shelter is used a lot, one shelter is enough, and the older one is cooler than the new one.

Public Restrooms Building. 56% of the respondents felt that the public restrooms building is in somewhat poor to poor condition while 16% felt it is in fair condition and 28% stated good condition. The majority of respondents felt the restrooms are accessible. 62% would like to see it renovated while the remainder were equally distributed between remove, relocate or no change. Renovation and relocation suggestions include: have a more historical style building, modernize the restrooms, relocate it so it is not the central feature of the park, and relocate it if a bandstand works well. Most comments involved availability: one-third could not access the inside because they were locked, there were no instructions about when they are open or how to arrange for unlocking them, and have the bathrooms open year round. Other comments include: they are poorly maintained, they smell, they are in need of repair, they occasionally have graffiti, and the woman's sign is missing.

Playground. The majority of the respondents felt that the playground, play equipment and seating are in fair to excellent condition and are accessible. 45% would like to see it renovated, 40% requested no change and 15% want it removed. Renovation suggestions include: repaint the equipment, keep the sand cleaner, add an ADA accessible area, enlarge the playground, and have two separate age-appropriate playgrounds. Other comments include: children like the playground a lot, it is in a good central location, and it's small but nice.

Lighted Tennis Courts (tennis courts have recently been renovated) . The majority of the respondents felt that the lighted tennis courts and lighting are in fair to excellent condition and are accessible. 95% requested no change while 5% would like to see it renovated. Renovation suggestions include: add center straps to the nets, and add a timer switch for the lights. Other comments include: it looks great, it's an excellent feature in the park, I don't use these courts but they are used, and the sprinkler system waters the courts.

Sand Volleyball Court. The majority of the respondents felt that the sand volleyball court is in fair to excellent condition, the size is adequate and it is accessible. 44% would like to see it renovated, 39% requested no change and 17% want it removed. Renovation suggestions include: define the edges better, and the court needs more sand. Other comments include: add a second court, people use it a lot especially during the summer months, people love the court, and remove the court if people don't use it.

Park Lighting. 42% of the respondents felt that the park lighting is in good to excellent condition while 35% felt it is in fair condition and 23% stated poor condition. 75% would like to see it renovated and 25% requested no change. Renovation suggestions include: have historical light fixtures in the park, the park lighting should have a more amber cast of light than white or fluorescent, add more lights for better security, light the shelters, and provide more light by the restrooms.

COLLYER PARK MASTER PLAN NEIGHBORHOOD MEETING

When? Thursday, May 15th, 6:00 - 8:00 p.m.

Where? Longmont Public Library, Room B.

Who? Interested individuals, families, organizations and businesses within Historic Eastside.

Why? To review the walking survey results and historical report, and to discuss specific park elements and recreation facilities to be included in the preliminary designs.

Why? This is a wonderful opportunity for us to come together and develop a Collyer Park Master Plan.

???? Please call Joyce Jensen, 303-776-3563 with questions or comments. Spanish translators will be available. Light refreshments will be served.

We look forward to seeing you there!

An Historical Review of Collyer Park

Introduction. Collyer Park was established by the Chicago-Colorado Colony when Longmont was founded in 1871. The park is named for Robert Collyer, the first president of the Chicago-Colorado Colony. The park is in the Historic Eastside Neighborhood, and at the request of the Historic Eastside Neighborhood Association Native Cultural Services conducted an historical study of the park. This study is one part of the historic documentation of the Eastside Neighborhood. The park is the entirety of Block 24 of the original townsite of the City of Longmont. Collyer Park was documented as an historic site by the City of Longmont Landmark Designation Commission in 1978.

Current Status. Collyer Park has been and is well maintained and used as a public park. The park is fully landscaped with grass and mature trees and shrubs. Two open-sided shelters with picnic tables are present, one in the northeast corner of the park was built in the 1970s. The shelter in the southwest corner of the park is 5-8 years old. A modern playground is near the northeast corner. A brick building with restrooms is in the center of the park, built in the 1970s. A volleyball court is present, and 2 lighted tennis courts are on the east side of the park. The current tennis courts are 2 years old, and replaced earlier courts. Concrete sidewalks are present along the perimeter of the park. In 1978 Lyons flagstone sidewalks were located on the west and south perimeters, these have since been replaced with concrete walks. Several benches are along the perimeter of the park, and there is lighting. A plaque placed by the Historic Eastside Neighborhood at the southwest corner of the park summarizes the history of the park. The current built environment of the park is thus entirely modern, with the exception of some of the trees. The Parks Department has a complete tree inventory of the park. There are no historic buildings or structures in the park.

Founding and Early History. Collyer Park was one of the original parks planned and platted by the Chicago-Colorado Colony, the founders of Longmont. The Chicago-Colorado Colony was part of a movement to colonize the West with planned communities or colonies. According to the St. Vrain Historical Society, a call for an organizational meeting of the Chicago-Colorado Colony was made by Robert Collyer, prominent Chicago minister, on February 22, 1870. In November 1870, a meeting was held to pursue the founding of a colony in Colorado. An organization was established with Robert Collyer elected President. Initiation into the colony was \$5.00. The officers appointed a locating committee of 3 to travel to Colorado and find a site suitable for the Colony.

The locating committee arrived in Denver in January, 1871, and had selected the site by February. Names proposed for the Colony were: New Chicago, Collyer, and Bross. On January 14, 1871, the Chicago Tribune referred to it as the "Collyer Colony". A local name for the Colony - Longmont - was decided upon, due to the view of Longs Peak. Collyer and other founding organizers would not reside at the Colony but would build dwellings for occasional visits. Robert Collyer apparently never made it to Longmont or Colorado. The Great Chicago Fire occurred in 1871, and destroyed his church along with much of the city. Collyer was a leader in the rebuilding of Chicago, and this effort seems to have diverted him from visiting the colony.

The Colony was a planned community, with Industry, Temperance and Morality the themes. As part of the planning, the townsite was platted with streets, blocks, and lots. Land was set aside for parks, schools, churches, county buildings, and a university. Robert Collyer had mentioned a library as being part of the planned community at a meeting in Chicago in January 1871. Library Hall was opened on June 12, 1871, apparently the first library built in Colorado. The opening was celebrated with the first Strawberry Festival.

Three original parks were planned. Collyer Park on the eastside, Thompson Park on the west side, and Lake Park (now Roosevelt Park) on the north. Collyer and Thompson parks each comprised a city block. The original plat for the colony shows the parks with paths or walks, with the walks in Collyer park leading to the center of the park. Virtually no information is available about Collyer Park in the 19th century. In 1884 Arbor Day was proclaimed for April 19. A day of festivities was held at Collyer Park, with citizens cleaning the park and planting trees and shrubs.

There is an indication that a bandstand stood in the park in the late 1880s or 1890s. There is a photograph of a raised wooden platform with a Cornet Band posing in front of it. The photograph was taken by Charles W. Boynton, publisher of the Longmont Ledger. The City Archives have dated the photo as being taken between 1894-1896. The Denver Public Library (DPL) has the photo dating between 1880 and 1900. A hand-written note on the back of the print at DPL says the photo is of the Cornet Band next to the bandstand in Collyer or Thompson Park. The Longmont Daily Times-Call has published the photo stating it was taken about 1915, and that it is of the "old band stand at Collyer Park". The St. Vrain Valley Historical Association, in their book "They Came to Stay" published the same photo with the caption "Longmont's Coronet Band, in Thompson Park". It is possible that wooden bandstands were present in both Collyer and Thompson Parks prior to the brick bandstands which were built in both parks in 1920. However, no written records of 19th century bandstands in either park have been located, including the absence of any newspaper articles about concerts or bandstands. The only record is the photograph.

Park Benches (benches are fairly new). Over 70% of the respondents felt that the park benches are in good to excellent condition, the amount is adequate and they are accessible. 89% requested no change while the remainder were equally distributed between relocate and renovate. Relocation and renovation suggestions include: have benches located inside the park, place concrete in front of and on the sides of the benches so that it is easier to shovel, and use another material instead of wood because the wood is starting to splinter. People like the perimeter locations because kids and adults can enjoy the open space in the middle.

Multi-Use Grass Areas (north and east of the new shelter & west of playground). Over 80% of the respondents felt that the multi-use grass areas are in fair to excellent condition and the amount is adequate. 70% requested no change, 26% were undecided and 4% would like them changed to another use. Other uses include: make a soccer field if the volleyball area is not used, and have a small dog area but don't take away the main grass areas. Other comments include: the grass areas are used a lot, we need more grass areas, have a doggie mitt dispenser, and increase trash pickup.

Existing Vegetation (trees and shrubs). Over 80% of the respondents felt that the trees are in good to excellent condition and over 70% felt that the shrubs are in good to excellent condition. 50% felt that the shade was just right, 25% requested more shade, 18% were undecided and 6% would like less shade. Suggestions include: provide more shade at the playground, and there is a good amount of shade. When asking about varieties, 62% were undecided, 31% requested more varieties and 8% felt that the varieties are just right. Suggestions include: review landscaping for a historical look, review the size and location for a more aesthetic arrangement, and we do not need any more varieties. Other comments include: replace old trees as they die off, I love the trees, shrubs provide hiding places, and remove the Cedar trees and shrubs in the south area and add grass.

Are there any other existing features in the park that you like or dislike?

Like and why: we love the park, the tennis courts, the old shade trees, the boulders with the historic plaques, it's informal feeling, there are lots of places for kids to run and play, it is easy to get to, and it's in a good location.

Dislike and why, suggested changes: too many dogs off leash, an absence of pet bag dispensers, the litter, Collyer Street traffic poses a daily danger to children crossing it, people parking and cruising on Saturdays and Sundays, the kiosk is old and rarely used, and nothing is consistent.

Other Comments. Add an historic gazebo or bandstand, have more city and neighborhood activities here, add more historic plaques describing the history of the two school buildings, place more emphasis on history and botanical names, the tennis courts lighting does not work in an historic district, the park is a great multi-use facility and funds should go toward somewhere needed, keep it as it is, and don't change much.

An Historical Review of Collyer Park

Introduction. Collyer Park was established by the Chicago-Colorado Colony when Longmont was founded in 1871. The park is named for Robert Collyer, the first president of the Chicago-Colorado Colony. The park is in the Historic Eastside Neighborhood, and at the request of the Historic Eastside Neighborhood Association Native Cultural Services conducted an historical study of the park. This study is one part of the historic documentation of the Eastside Neighborhood. The park is the entirety of Block 24 of the original townsite of the City of Longmont. Collyer Park was documented as an historic site by the City of Longmont Landmark Designation Commission in 1978.

Current Status. Collyer Park has been and is well maintained and used as a public park. The park is fully landscaped with grass and mature trees and shrubs. Two open-sided shelters with picnic tables are present, one in the northeast corner of the park was built in the 1970s. The shelter in the southwest corner of the park is 5-8 years old. A modern playground is near the northeast corner. A brick building with restrooms is in the center of the park, built in the 1970s. A volleyball court is present, and 2 lighted tennis courts are on the east side of the park. The current tennis courts are 2 years old, and replaced earlier courts. Concrete sidewalks are present along the perimeter of the park. In 1978 Lyons flagstone sidewalks were located on the west and south perimeters, these have since been replaced with concrete walks. Several benches are along the perimeter of the park, and there is lighting. A plaque placed by the Historic Eastside Neighborhood at the southwest corner of the park summarizes the history of the park. The current built environment of the park is thus entirely modern, with the exception of some of the trees. The Parks Department has a complete tree inventory of the park. There are no historic buildings or structures in the park.

Founding and Early History. Collyer Park was one of the original parks planned and platted by the Chicago-Colorado Colony, the founders of Longmont. The Chicago-Colorado Colony was part of a movement to colonize the West with planned communities or colonies. According to the St. Vrain Historical Society, a call for an organizational meeting of the Chicago-Colorado Colony was made by Robert Collyer, prominent Chicago minister, on February 22, 1870. In November 1870, a meeting was held to pursue the founding of a colony in Colorado. An organization was established with Robert Collyer elected President. Initiation into the colony was \$5.00. The officers appointed a locating committee of 3 to travel to Colorado and find a site suitable for the Colony.

The locating committee arrived in Denver in January, 1871, and had selected the site by February. Names proposed for the Colony were: New Chicago, Collyer, and Bross. On January 14, 1871, the Chicago Tribune referred to it as the "Collyer Colony". A local name for the Colony - Longmont - was decided upon, due to the view of Longs Peak. Collyer and other founding organizers would not reside at the Colony but would build dwellings for occasional visits. Robert Collyer apparently never made it to Longmont or Colorado. The Great Chicago Fire occurred in 1871, and destroyed his church along with much of the city. Collyer was a leader in the rebuilding of Chicago, and this effort seems to have diverted him from visiting the colony.

The Colony was a planned community, with Industry, Temperance and Morality the themes. As part of the planning, the townsite was platted with streets, blocks, and lots. Land was set aside for parks, schools, churches, county buildings, and a university. Robert Collyer had mentioned a library as being part of the planned community at a meeting in Chicago in January 1871. Library Hall was opened on June 12, 1871, apparently the first library built in Colorado. The opening was celebrated with the first Strawberry Festival.

Three original parks were planned. Collyer Park on the eastside, Thompson Park on the west side, and Lake Park (now Roosevelt Park) on the north. Collyer and Thompson parks each comprised a city block. The original plat for the colony shows the parks with paths or walks, with the walks in Collyer park leading to the center of the park. Virtually no information is available about Collyer Park in the 19th century. In 1884 Arbor Day was proclaimed for April 19. A day of festivities was held at Collyer Park, with citizens cleaning the park and planting trees and shrubs.

There is an indication that a bandstand stood in the park in the late 1880s or 1890s. There is a photograph of a raised wooden platform with a Cornet Band posing in front of it. The photograph was taken by Charles W. Boynton, publisher of the Longmont Ledger. The City Archives have dated the photo as being taken between 1894-1896. The Denver Public Library (DPL) has the photo dating between 1880 and 1900. A hand-written note on the back of the print at DPL says the photo is of the Cornet Band next to the bandstand in Collyer or Thompson Park. The Longmont Daily Times-Call has published the photo stating it was taken about 1915, and that it is of the "old band stand at Collyer Park". The St. Vrain Valley Historical Association, in their book "They Came to Stay" published the same photo with the caption "Longmont's Coronet Band, in Thompson Park". It is possible that wooden bandstands were present in both Collyer and Thompson Parks prior to the brick bandstands which were built in both parks in 1920. However, no written records of 19th century bandstands in either park have been located, including the absence of any newspaper articles about concerts or bandstands. The only record is the photograph.

One other historic photograph of Collyer Park is at the Longmont City Archives. Archivist Eric Mason thinks the photo may date to around 1890. The photo shows trees, walks, and what may be a drinking fountain at the left side. There does not appear to be much built in the park.

20th Century History. In 1919 a measure for Park Improvement Bonds passed and some \$10,000 was slated for improvements to Collyer Park. The planned improvements were to install a sprinkler system, put in "sanitary closets", walks and seats, and to trim the trees. The Longmont Ledger stated, "It will cause people who pass by Collyer Park in the railroad trains to speak well of Longmont if they see a beautiful well-kept park from the car windows. But better than talk is the comfort the Eastside people will get out of the park when it is made thus beautiful and attractive".

By May, 1919 the improvements to both Collyer and Thompson Parks were underway, under the direction of J. M. Gorham. Gorham had 15 men working in the park, and requested people to follow the paths and not walk on the lawn or pick the flowers.

Apparently around this time the name of the park and Collyer St. had been changed to Collier on street signs, through an error of the signmaker. The Ledger called for the mistake to be corrected: "The only reason we would like to see this name changed is because the original spelling of street and park has been changed by a blunder. They were named for Robert Collyer, of colony times, and in changing the spelling the honor to Mr. Collyer is lost, and the name has no significance". In April of 1920 the Ledger again railed against the misspelling of Collyer: "We still insist it is a shame that the spelling of Collyer Park should have been changed when the signs on the street corners were placed.....The city never should have accepted the signs, no matter who was to blame for changing the spelling". The variation in spelling of Collyer was not a new incident. The plan of the Chicago-Colorado Colony townsite from 1871 has Collyer Park, but the street running north-south on the west side of the park is spelled Collier St.

In early April of 1920, the park was prepared to be seeded in grass. The Ledger stated: "The whole park will be seeded except a plat on the south where the swing is, and, which will be used as a children's playground, and also the center where a brick and concrete bandstand will be constructed. The cottonwoods were cleaned out last year and soon the planting of trees will commence. Mr. Gorham, who has charge, says the blueprints call for elm, 3 kinds of hard maple, birch, Colorado spruce and some juniper bushes. Some fancy varieties of shrubbery will be put out. This will be an attractive park before the summer is over."

The State Inventory Form for Collyer Park states that according to the Record of Minutes for the Longmont Parks Board (1915 to 1939), Pete Jacobsen was awarded the contract in May, 1920 to build a bandstand and comfort station in the center of the park. The form lists B. C. Viney as architect. The 1915 to 1939 Record of Minutes for the Longmont Parks Board are currently missing. The Record was used by Estes and Large of the Landmark Designation Commission for information to fill out the State Inventory Form, so it does exist. This is one of the few primary sources for historical information on the park, but it was unavailable for this study.

Bandstands were constructed in both Collyer and Thompson Parks, and were completed and in use by 1921. The Ledger stated: "J. M. Gorham, Superintendent of Parks, commenced work with his helpers last Tuesday. Thompson and Collyer Parks took his first attention. He says he will have hanging boxes of vines and flowers from the bandstands in both parks, and also flower beds in each park, and each bed will have a different appearance".

The bandstand became an important aspect of the park. Concerts were held in the summer, with both the High School bands and the Longmont Municipal Band providing music. Eastside residents Ms. Irma Bledsoe and Ms. Kelly recall that the Longmont High School Band played weekly, in the evening. The park was sprayed for mosquitoes before concerts. The concerts were so popular that family groups made reservations to insure space. People sat on the grass, although there were some movable picnic tables.

The bandstand was raised in 1969. No pictures of the bandstand have been located.

Other improvements in the 1920s were a drinking fountain at the southwest corner, and two swings on the southern perimeter.

The park played a role during the Depression. In 1982, Darby relates that "many an unemployed rider of the rails dropped from freight trains nearby to scrounge the neighborhood for a bite to eat and a bit of work to pay for it. They were seldom turned away, but they did chop wood, mow lawns, etc. in exchange for food and a dollar or two to take them along their way". Camping or sleeping in municipal parks was commonplace before World War II, and it's quite likely that Collyer Park saw a fair amount of transient use.

There is a photograph of a group of new citizens in Collyer Park. The photo was taken on July 2, 1939 by Harley E. Link, and is titled "Citizenship picnic at Collier Park, Gertrude Fonda, teacher". The title is hand-

“Daily Times-Call” ha publicado la foto diciendo que fue tomada en 1915, y que es “El escenario viejo del parque Collyer”. La Sociedad Histórica del Valle St. Vrain, en su libro “Vinieron para quedarse” publicaron la misma foto con la leyenda “La Banda de Cornetas de Longmont en el Parque Thompson”. Es posible que las tarimas de madera estuvieran en ambos el Parque Collyer y el Parque Thompson. Antes de la plataforma de ladrillo que fueron construidas en ambos parques en 1920. Sin embargo, no se han encontrado registros escritos de las tarimas en el siglo XIX en ninguno de los parques. Incluyendo la ausencia de artículos en los periodicos acerca de conciertos. El único registro es la fotografía.

Otra fotografía histórica del parque Collyer está en los Archivos de Longmont. El Archivista Eric Mason piensa que la foto puede datar de alrededor del año 1890. La foto muestra árboles, senderos y lo que probablemente fueron bebederos en el lado izquierdo. Allí no parece haber mucha construcción en el parque.

La Historia en el siglo 20. En 1919 a medida que pasaron fondos para mejorar el parque y cerca de \$10,000 fueron programados para el mejoramiento del Parque Collyer. Las mejoras planeadas eran instalar un sistema de irrigación, poner sanitarios, veredas y bancas y podar los árboles. El diario “Longmont Ledger” manifestó “esto causara que la gente que pase por el Parque Collyer en el ferrocarril hable bien de Longmont si ven un parque hermoso y bien conservado desde las ventanas de sus vagones. Pero es mejor hablar de la comodidad que la gente del Lado Este obtendrá del parque cuando el parque se haga hermoso y atractivo”.

Para mayo de 1919 las mejoras del ambos parques Collyer y Thompson estaban en camino, bajo la dirección de J.M. Gorham. Gorham tenía 15 hombres trabajando en el parque, y a petición de la gente siguieron las veredas y no caminaron en el césped y no arrancaron las flores.

Aparentemente en esta misma época el nombre del parque y de la calle Collyer habían sido cambiados a Collier en los letreros de las calles, por un error del rotulista. El diario Ledger pidió que el error fuese corregido “el único motivo para ver este nombre cambiado es por que la ortografía original de la calle y del parque ha sido cambiado por una torpeza. Estos lugares se nombraron por Robert Collyer, en tiempo de la colonia, y al cambiar la forma de escribirlo el honor al Señor Collyer se pierde y el nombre no tiene significado alguno”. En abril de 1920 el Ledger otra vez en contra del error de escritura de Collyer “Aún insistimos en que es una vergüenza, el error ortográfico del Parque Collyer debió haber sido cambiado cuando los letreros de las esquinas fueron colocados... la ciudad nunca debió aceptar los letreros, sin importar a quien se culpara por el cambio de nombre” La variación en la forma de deletrear Collyer no fue un nuevo incidente. El plan para el pueblo de 1971 de la Colonia Chicago-Colorado tiene Parque Collyer, pero en la calle que corre de norte a sur en el lado oeste del parque esta deletreado Collier St.

A principios de abril de 1920, el parque fue preparado para sembrar césped. El Ledger afirmó “Todo el parque será sembrado excepto el lugar donde está el columpio, el cual será usado como patio de recreo, y también el centro donde una plataforma de ladrillo y concreto será construida. Los álamos fueron limpiados por última vez y pronto la reforestación con árboles nuevos comenzará. El señor Gorham, quien está a cargo, dice que el proyecto pedirá olmos, 3 tipos diferentes de árboles de maple, abedules, abetos de Colorado y algunos arbustos de enebro. Algunas variedades de arbustos serán puestas. Habrá un parque atractivo antes de que el verano termine”.

La forma de Inventarios del Estado para el Parque Collyer dice que de acuerdo al Registro de Minutas para la Junta Directiva de Parques de Longmont (1915 a 1939), Pete Jacobson ganó el contrato en mayo de 1920 para construir un escenario para la banda musical y una estación para descansar en el centro del parque. Las Formas mencionan a B.C. Viney como arquitecto del proyecto. El Registro de Munitas de 1915 a 1939 para la Junta Directiva de Parques de Longmont están actualmente perdidas. El Registro fue usado por Estes y la Comisión de Designación de Grandes Puntos de Interés para información para llenar La Forma de Inventarios del Estado, así es que sí existe. Este es un de los recursos primarios para obtener información histórica del parque, pero no estuvo disponible para este estudio.

Los escenarios para bandas musicales fueron construidos en ambos Parques Collyer y Thompson, y fueron completadas para su uso en 1921. El diario Ledger declaró “J.M. Gorham, Superintendente de Parques, comenzó el trabajo con sus ayudantes el martes pasado. Los Parques Thompson y Collyer llamaron su atención primero. Él dice que habrá cajas colgantes para enredaderas de parra y flores en los escenarios para ambos parques, y también bases de flores en cada parque, y cada base de flores tendrá una apariencia diferente”

Las plataformas para las bandas musicales se convirtieron en un aspecto importante del parque. Se llevaron a cabo conciertos en el verano, con bandas de escuelas de segunda enseñanza y La Banda Municipal de Longmont. Los residentes del Lado Este la señora Irma Bledsoe y la señora Kelly recuerdan que la Banda de la escuela preparatoria de Longmont tocaba cada semana, en la noche. El parque era fumigado para evitar

mosquitos antes de los conciertos. Los conciertos eran tan populares que varios grupos de familias hacían reservaciones para asegurar su lugar. La gente se sentaba en el césped, aunque había algunas mesas de picnic móviles.

El escenario de la banda fue elevado en 1969. No se han localizado fotografías de este lugar.

Otras mejoras en los años 20 fueron un bebedero en la esquina suroeste, y dos columpios en el perímetro sur.

El parque jugó un papel muy importante durante la época e la Depresión. En 1982, Darby relata que "muchos desempleados de la compañía ferroviaria bajaban de sus trenes de carga para explorar el vecindario y para conseguir un poco de comida y trabajaban un poco para pagar por ésta. Muy pocas veces no fueron contratados, ellos cortaban leña, podaban el césped, etc., a cambio de comida y un dólar o dos para llevar en el camino". Durante la Segunda Guerra Mundial acampar o dormir en parques municipales era muy común, y es de suponer que el Parque Collyer vio una cantidad considerable de transeúntes.

Hay una fotografía de un grupo de nuevos ciudadanos en el Parque Collyer. La foto fue tomada el 2 de julio de 1939 por Harley E. Link, y se titula "Picnic de ciudadanos en el Parque Collyer, Gertrude Fonda, profesora". El título está escrito a mano al reverso de la foto. La foto muestra un grupo de adultos y niños posando debajo de un árbol, se asume que los "nuevos" ciudadanos de Longmont, es un grupo de inmigrantes que obtuvieron su ciudadanía.

Dos canchas de tenis fueron construidas es el lado este del parque en los años cuarenta. Anteriormente estas canchas de tenis se encontraban en el terreno de la Escuela Columbine enfrente de la calle Atwood, pero fueron movidas cuando la nueva adición de la escuela fue planeada. El Registro de Minutas de la Comisión de Parques de Longmont de 1939 a 1959 se encuentra en los Archivos de la Ciudad. Proporciona poca información directa acerca del Parque Collyer como algunas cifras de presupuesto anual referentes al parque.

En 1968 un plan de desarrollo de cinco años fue presentado a la Junta Directiva Consultiva de Parques. Se destinaron \$200,000 para modernizar las instalaciones del parque. Parte de este dinero se uso aparentemente para los sanitarios y los refugios construidos en el Parque Collyer en los inicios de los años 70s.

En 1994, treinta y cinco jóvenes y niños del Programa Alternativo para la Juventud de la Ciudad de Longmont limpiaron y pintaron las mesas de picnic del parque. Cerca de 110 años después de la primera limpieza en el Día Arbolario, el parque sigue siendo una parte importante del la Comunidad del lado Este.

Conclusiones. El Parque Collyer ha sido una parte integral de del Vecindario del lado Este desde que se fundó en Longmont. Al irse intensificando el desarrollo urbano en los últimos 130 años, el papel e importancia del parque se han expandido, proporcionando espacio al aire libre en la ciudad. Como Virginia Estes y Dorothy Large afirmaron en los Registros de Inventario del Estado en 1978, "El Parque Collyer ha sido un paraíso de descanso y recreación, no solo para los vecindarios adyacentes y la Escuela Columbine, sino también para las personas de toda la ciudad y el Valle St. Vrain, y los cansados viajeros desde los inicios de la comunidad".

El Parque Collyer no tiene una historia dramática, ni registros escritos de su historia y el desarrollo del parque son escasos. Es claro que el parque ha sido bien querido y usado por la comunidad. La estructura y los edificios actuales del parque son modernos, y no son lo suficientemente antiguos para considerarlos recursos históricos. Sin embargo, el parque mismo, y su propiedad cultural completa son valiosos para su reconocimiento. El Parque Collyer es elegible para estar en Los Registros de Propiedades Históricas del Estado como un punto geográfico de gran significado en el Vecindario del Lado Este y de la Ciudad de Longmont.

Una Revisión Histórica del Parque Collyer

Introducción. El Parque Collyer fue establecido por la Colonia de Chicago-Colorado cuando Longmont fue fundado en 1871. El parque se nombra en honor a Robert Collyer, el primer presidente de la Colonia de Chicago-Colorado. El parque se encuentra en el Vecindario Histórico del Lado Este, y a petición de la Asociación Nativa de Servicios Culturales del Vecindario Histórico de Lado Este se condujo un estudio del parque. El estudio es una parte de la documentación histórica del Vecindario del Lado Este. El parque cubre la totalidad de la manzana 24 del municipio original de la Ciudad de Longmont. El Parque Collyer se documentó como un sitio histórico por la Comisión de Designación de Puntos de Interés de la ciudad de Longmont en 1978.

Estado Actual. El Parque Collyer ha sido y es mantenido en buenas condiciones y usado como parque público. El jardín del parque está completamente plantado con césped, árboles y arbustos maduros. Hay dos refugios abiertos con mesas de picnic, uno en la esquina noreste fue construido en los 70s. El refugio de la esquina suroeste del parque tiene de 5 a 8 años. Un área de juegos está cerca de la esquina nordeste del parque. Un edificio de ladrillo con sanitarios que está en el centro del parque, también fue construido en los años 70. Hay una cancha de voleibol, y dos canchas de tenis alumbradas en el este del parque. Las canchas de tenis actuales tienen dos años, y reemplazaron las canchas anteriores. Hay aceras pavimentadas con concreto a lo largo del perímetro del parque. En 1978 banquetas de loza de Lyons se localizaban en los perímetros sur y oeste, éstas fueron reemplazadas por banquetas de concreto. Hay algunas bancas en el perímetro del parque, y hay alumbrado. Una placa puesta por el Vecindario Histórico del Lado Este en la esquina suroeste del parque resume la historia del parque. La presente construcción ambiental del parque es completamente moderna, con la excepción de algunos árboles. El Departamento de Parques ha completado un inventario de árboles en el parque. No hay edificios o estructuras históricos en el parque.

Fundando una Historia Reciente. El Parque Collyer fue uno de los parques originales planeado y diseñado por la Colonia de Chicago-Colorado, los fundadores de Longmont. La Colonia de Chicago-Colorado fue parte de un movimiento para colonizar el oeste con comunidades y colonias planeadas. De acuerdo a la Sociedad Histórica de St. Vrain, una llamada para una junta organizacional de Chicago-Colorado fue hecha por Robert Collyer, un prominente ministro de Chicago, el día 22 de febrero de 1870. En noviembre de 1870, se llevó a cabo una junta con el propósito de fundar una Colonia en Colorado. Se estableció una organización con Robert Collyer elegido como presidente. La iniciación de la Colonia tenía un costo de \$5.00. Los oficiales designaron un comité de tres personas para viajar a Colorado para encontrar y localizar un sitio adecuado para la Colonia.

El Comité localizador llegó a Denver en enero de 1871, y había elegido un lugar para febrero. Los nombres propuestos para la nueva Colonia fueron: Nuevo Chicago, Collyer y Bross. El 14 de enero de 1871, la Tribuna de Chicago se refirió a ella como la "Colonia Collyer". El nombre local para la Colonia – Longmont – se decidió posteriormente, debido a la vista de las montañas Twin Peaks. Collyer y otros fundadores no residirían en la Colonia pero tendrían casas para hacer visitas ocasionales. Robert Collyer aparentemente nunca llegó a Longmont ó a Colorado. El gran incendio de Chicago ocurrió en 1871, y destruyó su iglesia y gran parte de su ciudad. Collyer fue uno de los líderes en la reconstrucción de Chicago, y este esfuerzo parece haber desviado su visita a la Colonia.

La Colonia fue una comunidad planeada con industria, Moderación y Moralidad los temas. Como parte de la planeación, el pueblo fue diseñado con calles, manzanas y lotes. Algún terreno fue destinado para parques, escuelas y una universidad. Robert Collyer había mencionado una biblioteca como parte de la planeación de la comunidad en una junta en Chicago en enero de 1871. La biblioteca municipal se abrió el 12 de junio de 1871. Aparentemente fue la primera biblioteca construida en Colorado. La inauguración fue celebrada con el Primer Festival de la Fresa.

Se planearon tres parques originales. El Parque Collyer en el Lado Este, el parque Thompson en el Lado Oeste, y el parque del Lago (ahora el parque Roosevelt) en el norte.

El plano original de la colonia muestra los parques con senderos o caminos, con los caminos en el Parque Collyer conduciendo al centro del parque. Prácticamente no hay información disponible acerca del Parque Collyer en el siglo XIX. En 1884 se proclamó en día Arbolario el día 19 de abril. Un día de festividades en el parque Collyer, con ciudadanos limpiando el parque y plantando árboles y arbustos.

Hay indicios de que un escenario para banda de música se localizaba en el parque a finales del siglo XIX. Hay una fotografía de una tarima de madera con una orquesta de cornetas posando enfrente de ésta. La fotografía fue tomada por Charles W. Bovnton, editor del "Longmont Ledger". Los Archivos de la ciudad han registrado que la foto fue tomada entre 1894 y 1986. La Librería Pública de Denver (DPL) tiene la foto con una fecha de 1880 a 1890. Una nota escrita a mano detrás de la copia de DPL dice que la foto es de la orquesta cornetas a un lado del escenario del Parque Collyer o del Parque Thompson. El diario de Longmont

"Daily Times-Call" ha publicado la foto diciendo que fue tomada en 1915, y que es "El escenario viejo del parque Collyer". La Sociedad Histórica del Valle St. Vrain, en su libro "Vinieron para quedarse" publicaron la misma foto con la leyenda "La Banda de Cornetas de Longmont en el Parque Thompson". Es posible que las tarimas de madera estuvieran en ambos el Parque Collyer y el Parque Thompson. Antes de la plataforma de ladrillo que fueron construidas en ambos parques en 1920. Sin embargo, no se han encontrado registros escritos de las tarimas en el siglo XIX en ninguno de los parques. Incluyendo la ausencia de artículos en los periódicos acerca de conciertos. El único registro es la fotografía.

Otra fotografía histórica del parque Collyer está en los Archivos de Longmont. El Archivista Eric Mason piensa que la foto puede datar de alrededor del año 1890. La foto muestra árboles, senderos y lo que probablemente fueron bebederos en el lado izquierdo. Allí no parece haber mucha construcción en el parque.

La Historia en el siglo 20. En 1919 a medida que pasaron fondos para mejorar el parque y cerca de \$10,000 fueron programados para el mejoramiento del Parque Collyer. Las mejoras planeadas eran instalar un sistema de irrigación, poner sanitarios, veredas y bancas y podar los árboles. El diario "Longmont Ledger" manifestó "esto causara que la gente que pase por el Parque Collyer en el ferrocarril hable bien de Longmont si ven un parque hermoso y bien conservado desde las ventanas de sus vagones. Pero es mejor hablar de la comodidad que la gente del Lado Este obtendrá del parque cuando el parque se haga hermoso y atractivo".

Para mayo de 1919 las mejoras del ambos parques Collyer y Thompson estaban en camino, bajo la dirección de J.M. Gorham. Gorham tenía 15 hombres trabajando en el parque, y a petición de la gente siguieron las veredas y no caminaron en el césped y no arrancaron las flores.

Aparentemente en esta misma época el nombre del parque y de la calle Collyer habían sido cambiados a Collier en los letreros de las calles, por un error del rotulista. El diario Ledger pidió que el error fuese corregido "el único motivo para ver este nombre cambiado es por que la ortografía original de la calle y del parque ha sido cambiado por una torpeza. Estos lugares se nombraron por Robert Collyer, en tiempo de la colonia, y al cambiar la forma de escribirlo el honor al Señor Collyer se pierde y el nombre no tiene significado alguno". En abril de 1920 el Ledger otra vez en contra del error de escritura de Collyer "Aún insistimos en que es una vergüenza, el error ortográfico del Parque Collyer debió haber sido cambiado cuando los letreros de las esquinas fueron colocados... la ciudad nunca debió aceptar los letreros, sin importar a quien se culpara por el cambio de nombre" La variación en la forma de deletrear Collyer no fue un nuevo incidente. El plan para el pueblo de 1971 de la Colonia Chicago-Colorado tiene Parque Collyer, pero en la calle que corre de norte a sur en el lado oeste del parque esta deletreado Collier St.

A principios de abril de 1920, el parque fue preparado para sembrar césped. El Ledger afirmó "Todo el parque será sembrado excepto el lugar donde está el columpio, el cual será usado como patio de recreo, y también el centro donde una plataforma de ladrillo y concreto será construida. Los álamos fueron limpiados por última vez y pronto la reforestación con árboles nuevos comenzará. El señor Gorham, quien está a cargo, dice que el proyecto pedirá olmos, 3 tipos diferentes de árboles de maple, abedules, abetos de Colorado y algunos arbustos de enebro. Algunas variedades de arbustos serán puestas. Habrá un parque atractivo antes de que el verano termine".

La forma de Inventarios del Estado para el Parque Collyer dice que de acuerdo al Registro de Minutas para la Junta Directiva de Parques de Longmont (1915 a 1939). Pete Jacobson ganó el contrato en mayo de 1920 para construir un escenario para la banda musical y una estación para descansar en el centro del parque. Las Formas mencionan a B.C. Viney como arquitecto del proyecto. El Registro de Minutas de 1915 a 1939 para la Junta Directiva de Parques de Longmont están actualmente perdidas. El Registro fue usado por Estes y la Comisión de Designación de Grandes Puntos de Interés para información para llenar La Forma de Inventarios del Estado, así es que sí existe. Este es un de los recursos primarios para obtener información histórica del parque, pero no estuvo disponible para este estudio.

Los escenarios para bandas musicales fueron construidos en ambos Parques Collyer y Thompson, y fueron completadas para su uso en 1921. El diario Ledger declaró "J.M. Gorham, Superintendente de Parques, comenzó el trabajo con sus ayudantes el martes pasado. Los Parques Thompson y Collyer llamaron su atención primero. Él dice que habrá cajas colgantes para enredaderas de parra y flores en los escenarios para ambos parques, y también bases de flores en cada parque, y cada base de flores tendrá una apariencia diferente"

Las plataformas para las bandas musicales se convirtieron en un aspecto importante del parque. Se llevaron a cabo conciertos en el verano, con bandas de escuelas de segunda enseñanza y La Banda Municipal de Longmont. Los residentes del Lado Este la señora Irma Bledsoe y la señora Kelly recuerdan que la Banda de la escuela preparatoria de Longmont tocaba cada semana, en la noche. El parque era fumigado para evitar

REUNIÓN DE LA VECINDAD DEL PARQUE DE COLLYER

Cuando? Jueves, 15 de mayo de las 6:00 a las 8:00 p.m.

Donde? Biblioteca Pública De Longmont, Sitio B

Quien? Personas interesadas, las familias, organizaciones y negocios dentro del Historico Lado Este.

Por que? Repasar los resultados de la encuesta de la caminata y el informe histórico, y discutir elementos específicos del parque y las instalaciones de la reconstrucción que se incluirán en los diseños preliminares.

Por que? Esto es una oportunidad maravillosa para reunirnos y desarrollar un plan maestro del parque de Collyer.

Traductores de español estarán disponibles. Se servirán refrescos ligeros.

Nosotros esperamos poder verlos allá!

REUNIÓN DE LA VECINDAD DEL PARQUE DE COLLYER

Cuando? Jueves, 15 de mayo de las 6:00 a las 8:00 p.m.

Donde? Biblioteca Pública De Longmont, Sitio B

Quien? Personas interesadas, las familias, organizaciones y negocios dentro del Historico Lado Este.

Por que? Repasar los resultados de la encuesta de la caminata y el informe histórico, y discutir elementos específicos del parque y las instalaciones de la reconstrucción que se incluirán en los diseños preliminares.

Por que? Esto es una oportunidad maravillosa para reunirnos y desarrollar un plan maestro del parque de Collyer.

Traductores de español estarán disponibles. Se servirán refrescos ligeros.

Nosotros esperamos poder verlos allá!

PLAN MAESTRO DEL PARQUE COLLYER

PROGRAMA DE RECOMENDACIONES DE DISEÑO

La información usada para desarrollar este programa se obtuvo a través de la compilación de las recomendaciones en un tour en una caminata guiada por individuos y familias, la junta de vecinos y el reporte histórico del parque. Estas recomendaciones serán consideradas en conjunto con otros asuntos incluyendo presupuesto, y consideraciones de mantenimiento y seguridad.

Desarrollo de Metas. Las siguientes metas de desarrollo cubren todos los sitios del parque. Se mencionan sin un orden específico.

- Destacar el carácter “histórico” del lugar.
 - Incorporar el periodo de iluminación, arquitectura, el sitio de las bancas y los letreros.
 - Crear un parque que tenga continuidad y mantenga la diversidad.
- Preservar las áreas verdes en zonas abiertas.
 - Investigar:
 - Reubicar algunos de los árboles del área noroeste al área norte de las canchas de tenis.
 - Quitar los cedros cerca de la 6ª avenida.
 - Identificar las áreas que se mantendrán como áreas verdes abiertas e informar al Silvicultor de la Ciudad.
- Reemplazar los árboles viejos que estén muriendo.
 - Incorporar más variedades incluyendo especies de árboles siempre verdes.
 - Plantar grupos de árboles y mantener las áreas verdes abiertas.
 - Trabajar con el Silvicultor de la Ciudad para preparar una lista de árboles con nombres comunes y científicos.
- Mantener la plantación de arbustos en un mínimo.
 - Considerar quitar algunos de los juníperos existentes para reducir lugares para esconderse y mantener algunos de ellos que proveen una buena barrera que amortigua el ruido de la calle.
- Incorporar bases elevadas de plantas en cada esquina del parque.
 - Mantener la base de elevada de plantas existente en la esquina suroeste del parque. Considerar reemplazar las unidades segmentadas de albañilería con piedras naturales.
 - Incorporar más variedad de plantas (por ejemplo: plantas perennes, pastos ornamentales, bulbos, plantas de “xeriscape”) en vez de plantar flores anuales.
- Tener el mismo tipo de bancas en el parque.
 - Conservar las bancas interiores del parque. Examinar estas bancas y reparar las dañadas. Incrementar el tamaño de los asientos de concreto de algunas de las bancas para hacerlas accesibles a incapacitados (ADA American Disable Association).
 - Quitar y reemplazar las bancas cerca del área de juegos.
 - Instalar una banca cerca de la cancha de tenis.
 - Explorar otras áreas verdes dentro del parque para poner bancas adicionales sin saturar el parque de ellas.
- Renovar la iluminación interior del parque.
 - Poner luces con apariencia antigua y arreglos con un tono ámbar.
 - Examinar y reubicar las luces existentes y agragar más luces para mantener más seguridad.

SEGUNDO REUNIÓN DE LA VECINDAD DEL PARQUE DE COLLYER

Cuando? Miércoles, 25 de junio de las 6:00 a las 8:00 p.m.

Donde? El Parque Collyer. En caso de que haga mal tiempo la junta se llevará a cabo en la Biblioteca Pública de Longmont, Sala B.

Quien? Personas interesadas, las familias, organizaciones y negocios dentro del Histórico Lado Este.

Por que? Repasar y discutir en el diseño preliminar del parque.

Por que? Esto es una oportunidad maravillosa para reunirnos y desarrollar un plan maestro del parque de Collyer.

Traductores de español estarán disponibles. Se servirán refrescos ligeros.

Nosotros esperamos poder verlos allá!

COLLYER PARK MASTER PLAN SECOND NEIGHBORHOOD MEETING

When? Wednesday, June 25, 6:00 - 8:00 p.m.

Where? Collyer Park. In case of inclement weather, the meeting will be held at the Longmont Public Library, Room B.

Who? Interested individuals, families, organizations and businesses within Historic Eastside.

Why? To review and make comments about the preliminary park design.

Why? This is a wonderful opportunity for us to come together and develop a Collyer Park Master Plan.

???? Please call Joyce Jensen, 303-776-3563 with questions or comments. Spanish translators will be available. Light refreshments will be served.

We look forward to seeing you there!

Desirable Park Facilities & Recreation Activities. The following facilities and activities are recommended to remain as they are or for redevelopment. These desirable elements are listed in order of preference.

1. Retain the lighted tennis courts.
 - Ask the city to place signage by the light button.
 - Inform the city about the irrigation system overspraying the courts.
2. Renovate the public restrooms building.
 - Consider having vines grow on the building and/or adding a mural of the Historic Eastside Neighborhood until it is renovated.
 - Have a more historical looking building to fit the park character (i.e., natural stone, brick).
 - Consider adding skylights and interior lights.
 - If a bandstand is added to the park, consider incorporating the restrooms into this feature (i.e., Zokolo).
3. Incorporate two shelters that have similar architectural elements.
 - Keep the shelters in approximately the same locations and have them both ADA accessible.
 - Retain the amount of tables, grills and trash receptacles for each shelter.
 - For the new shelter (southwest), research adding detailing (i.e., fascia, cupola, brick or stone columns) to give it an historical look.
 - For the older wooden shelter (northeast), remove and replace it with a more historical looking shelter.
4. Renovate the playground while keeping it in the same central location.
 - Have one playground for all ages.
 - Make the playground ADA accessible.
 - Add more trees so the playground has better shade.
5. Retain the sand volleyball court.
6. Include other site amenities.
 - Install new trash receptacles.
 - Install doggie mitt dispensers.
 - Provide bilingual signage (English and Spanish) for all signs within the park. Add historical plaques with Spanish text next to the existing plaques.
7. Contemplate other recreation elements.
 - Explore re-creating a bandstand since there was one in the original park. Keep it centrally located.
 - Research having an expression wall for youth.
 - Consider having skateboard elements by the Atwood street sidewalk.
 - Investigate having a water feature (i.e., fountain, boulder with water running over it) in the park.

Servicios Deseables en el Parque & Actividades de Recreación. Los siguientes servicios y actividades son recomendadas para que permanezcan tal como están o para su re-desarrollo. Estos elementos deseables se enlistan en orden de preferencia.

1. Mantener iluminadas las canchas de tenis.
 - Solicitar a la Ciudad que se coloquen señales de tránsito oprimiendo el botón.
 - Informar a la Ciudad acerca del sistema de irrigación que se extienden hasta las canchas de tenis.
2. Renovar los edificios de los baños públicos.
 - Tener en consideración plantar enredaderas en el edificio y/o añadir un mural del Vecindario Histórico del Lado Este hasta que sea renovado.
 - Crear un edificio con apariencia más histórica que vaya con el carácter del parque (por ejemplo: piedra naturales, ladrillo, etc.)
 - Considerar agregar luces elevadas y luces interiores.
 - Si se agrega un quisco al parque, considerar construir baños en esta estructura.
3. Incorporar dos refugios que tengan elementos arquitectónicos similares.
 - Mantener los refugios en aproximadamente el mismo lugar y hacerlos accesibles para incapacitados (ADA).
 - Conservar el número de mesas, asadores, y botes de basura para cada refugio.
 - Para un nuevo refugio (en el lado sureste del parque), investigar si se puede añadir detallado (por ejemplo una fachada, una cúpula, columnas de piedra o ladrillos) dándole una apariencia histórica.
 - En cuanto el viejo refugio de madera (en el noreste) quitarlo y reemplazarlo con un refugio de apariencia más histórica.
4. Renovar el área de juegos manteniendo su misma localización en el centro.
 - Tener un área de juegos para todas las edades.
 - Hacer el área de juegos accesible a incapacitados (ADA).
 - Plantar más árboles para que el área de juegos tenga más zonas con sombra.
5. Conservar la cancha de voleibol de arena.
6. Incluir otros servicios públicos.
 - Instalar nuevos receptáculos de basura.
 - Instalar un dispensador de guantes de plástico para recoger desechos de perro.
 - Proporcionar letreros bilingües (en inglés y español) para todos los señalamientos del parque. Añadir placas históricas con textos en español a un lado de las placas existentes.
7. Contemplar otros elementos de recreación.
 - Explorar el re-crear un quisco puesto que había uno en el parque original. Mantener su localización en el centro.
 - Investigar la posibilidad de tener un muro para la expresión de la juventud.
 - Considerar el tener elementos para que se practique la patineta a un lado de la acera en la calle Atwood.
 - Investigar si es posible tener un elemento con agua (por ejemplo: una fuente, una roca grande con agua en movimiento) en el parque.

COLLYER PARK MASTER PLAN SECOND NEIGHBORHOOD MEETING

- When?** Wednesday, June 25, 6:00 - 8:00 p.m.
- Where?** Collyer Park. In case of inclement weather, the meeting will be held at the Longmont Public Library, Room B.
- Who?** Interested individuals, families, organizations and businesses within Historic Eastside.
- Why?** To review and make comments about the preliminary park design.
- Why?** This is a wonderful opportunity for us to come together and develop a Collyer Park Master Plan.
- ????** Please call Joyce Jensen, 303-776-3563 with questions or comments. Spanish translators will be available. Light refreshments will be served.

We look forward to seeing you there!

SEGUNDO REUNIÓN DE LA VECINDAD DEL PARQUE DE COLLYER

- Cuando?** Miércoles, 25 de junio de las 6:00 a las 8:00 p.m.
- Donde?** El Parque Collyer. En caso de que haga mal tiempo la junta se llevará a cabo en la Biblioteca Pública de Longmont, Sala B.
- Quien?** Personas interesadas, las familias, organizaciones y negocios dentro del Historico Lado Este.
- Por que?** Repasar y discutir en el diseño preliminar del parque.
- Por que?** Esto es una oportunidad maravillosa para reunirnos y desarrollar un plan maestro del parque de Collyer.
- Traductores de español estarán disponibles. Se servirán refrescos ligeros.

Nosotros esperamos poder verlos allá!

COLLYER PARK MASTER PLAN

DESIGN PROGRAM RECOMMENDATIONS

The information used to produce this program was obtained through a compilation of findings from a self-guided walking tour for individuals and families, a neighborhood meeting and from the park historical report. These recommendations will be considered along with other items including budget, maintenance and safety considerations.

Development Goals. The following development goals address the overall park site. They are listed in random order.

- Enhance the "historical" character of the site.
 - Incorporate period lighting, architecture, site furniture and signage.
 - Create a park that has continuity yet still maintains diversity.
- Preserve the open multi-use grass areas.
 - Investigate:
 - relocating some of the small trees in the northwest field to the area north of the tennis courts.
 - removing the cedar trees near 6th Avenue.
 - Identify areas to remain as open grass areas and inform the City Forester.
- Replace older trees as they die off.
 - Incorporate more varieties including evergreen species.
 - Plant clusters of trees while retaining the open grass areas.
 - Work with the City Forester to prepare a tree list with botanical and common names.
- Keep shrub plantings to a minimum.
 - Consider removing some of the existing junipers to reduce hiding places yet retain the ones that provide good street/noise buffers.
- Incorporate raised planter beds at each corner of the park.
 - Keep the existing raised planter bed (southwest corner). Consider replacing the segmented masonry units with natural stone.
 - Incorporate more plant varieties (i.e., perennials, ornamental grasses, bulbs, xeriscape plants) instead of having all annual plants.
- Have the same style of benches throughout the park.
 - Keep the exterior park benches. Examine these benches and replace damaged slats. For some of the benches, increase the size of the concrete pads for ADA accessibility.
 - Remove and replace the benches by the playground.
 - Place a bench near the volleyball court.
 - Explore other areas within the park for additional bench locations without overcrowding the park.
- Renovate the interior park lighting.
 - Have historical lights and fixtures with a more amber cast of light.
 - Examine relocating the existing lights and adding more lights for better security and safety.

LAS PREGUNTAS ADICIONALES

PREGUNTA #1: Luces en El Parque (no las luces en la calle)

1. Circule el número que represente como le gustan las luces en el parque (1 = excelente 5 = poco).

Condición General 1 2 3 4 5

2. ¿Qué debemos hacer con las luces en el parque?

A) quitar B) trasladar C) restaurar D) no cambio

Si usted escogió, trasladar o restaurar, por favor, dé las sugerencias. _____

3. Comentarios Adicionales _____

PREGUNTA #2: Bancos en el Parque (los bancos son nuevos)

1. Circule el número que represente como le gustan los bancos en el parque (1 = excelente 5 = poco).

Condición General 1 2 3 4 5

Cantidad 1 2 3 4 5

Accesibilidad 1 2 3 4 5

2. ¿Qué debemos hacer con los bancos en el parque? A) quitar B) trasladar C) restaurar D) no cambio

Si usted escogió, trasladar o restaurar, por favor, dé las sugerencias. _____

3. Comentarios Adicionales _____

PREGUNTA #3: Areas del Césped (situados en el norte y el este del refugio nuevo y el oeste del campo de juegos para niños).

1. Circule el número que represente como le gustan las áreas del césped (1 = excelente 5 = poco).

Condición General 1 2 3 4 5

Tamaño 1 2 3 4 5

2. ¿Deben de ser cambiadas estas áreas para algun uso específico? A) sí B) no C) indeciso

Si sí, da por favor las sugerencias. _____

3. Comentarios Adicionales _____

PREGUNTA #4: Arboles y Arbustos Existentes.

1. Circule el número que represente como le gustan las áreas de la vegetación existente (1 = excelente 5 = poco).

Las Condiciones Generales de Los Arboles 1 2 3 4 5

Las Condiciones Generales de Los Arbustos 1 2 3 4 5

2. ¿Le gustaria más sombra o menos? A) más sombra B) menos sombra C) indeciso

¿Dónde? _____

3. ¿Le gustaria ver más variedad de árboles? A) más variedad B) menos variedad C) indeciso

¿Por qué? _____

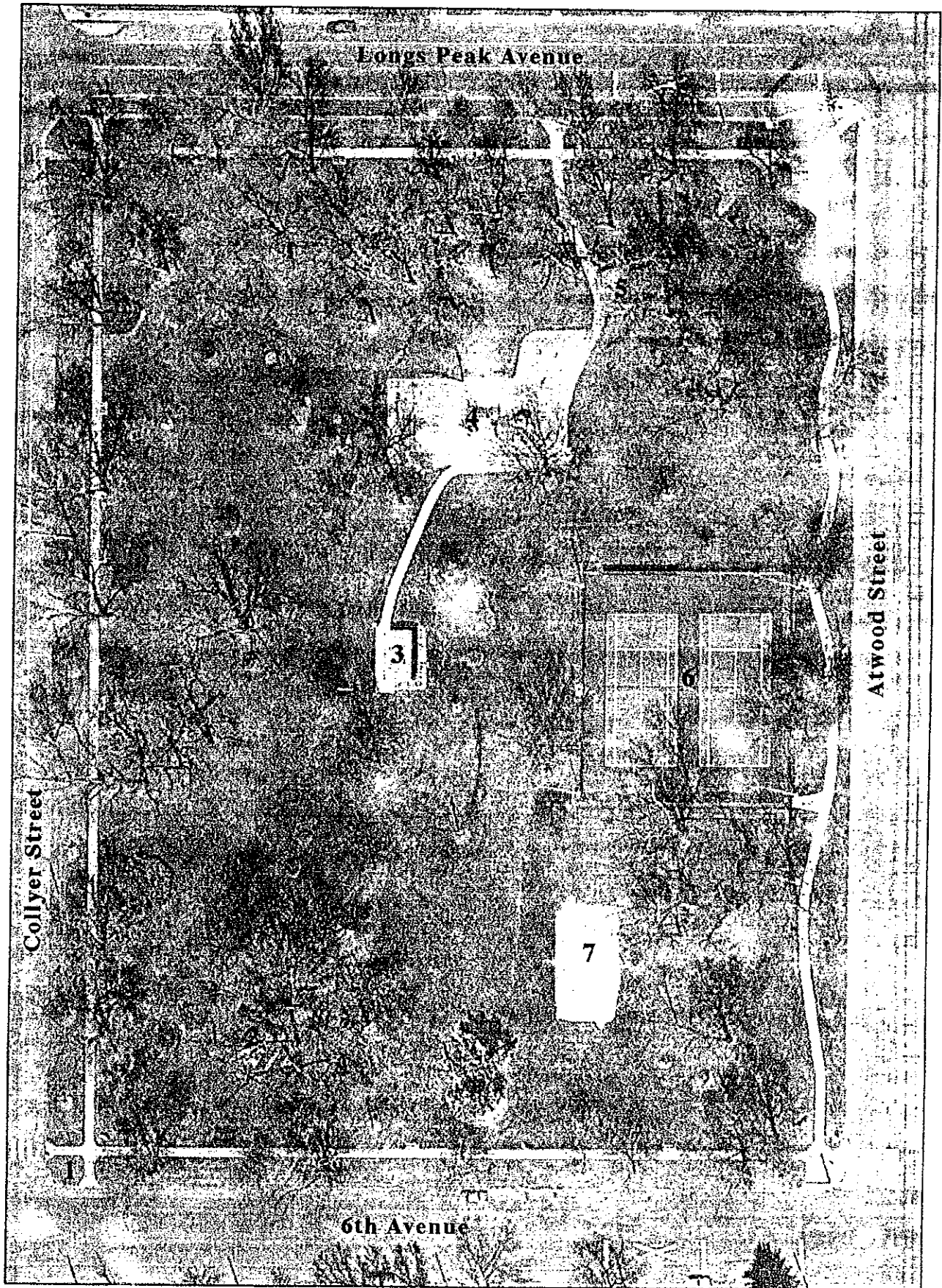
PREGUNTA #5: ¿Hay otras características existentes en el parque que a usted le gustan o no le gustan?

1. ¿Le gustan y por qué? _____

2. ¿No le gustan y por qué? _____

3. ¿Sí, no le gustan, cómo le gustaría cambiarlas? _____

El Parque De Collyer



LA ESTACION #4: Campo de Juegos para los Niños

1. Circule el número que represente como le gusta el campo de juegos para los niños (1 = excelente 5 = poco).

Condición General	1	2	3	4	5
Equipo de Juegos	1	2	3	4	5
Accesibilidad	1	2	3	4	5
Asientos	1	2	3	4	5

2. ¿Qué debemos hacer con el campo de juegos para los niños?

- A) quitar B) trasladar C) restaurar D) no cambio

Si usted escogió, trasladar o restaurar, por favor, dé las sugerencias. _____

3. Comentarios Adicionales _____

LA ESTACION #5: El Refugio (esquina del noreste del parque)

1. Circule el número que represente como le gusta el refugio (1 = excelente 5 = poco).

Condición General	1	2	3	4	5
Mesas/Parrillas	1	2	3	4	5
Accesibilidad	1	2	3	4	5

2. ¿Qué debemos hacer con este refugio existente?

- A) quitar B) trasladar C) restaurar D) no cambio

Si usted escogió, trasladar o restaurar, por favor, dé las sugerencias. _____

3. Comentarios Adicionales _____

LA ESTACION #6: Canchas del Tenis (las canchas del tenis han sido restauradas)

1. Circule el número que represente como le gustan las canchas del tenis (1 = excelente 5 = poco).

Condición General	1	2	3	4	5
Iluminación	1	2	3	4	5
Accesibilidad	1	2	3	4	5

2. ¿Qué debemos hacer con las canchas del tenis?

- A) quitar B) trasladar C) restaurar D) no cambio

Si usted escogió, trasladar o restaurar, por favor, dé las sugerencias. _____

3. Comentarios Adicionales _____

LA ESTACION #7: La cancha de Voleibol

1. Circule el número que represente como le gusta la cancha de voleibol (1 = excelente 5 = poco).

Condición General	1	2	3	4	5
El Tamaño	1	2	3	4	5
Accesibilidad	1	2	3	4	5

2. ¿Qué debemos hacer con la cancha de voleibol?

- A) quitar B) trasladar C) restaurar D) no cambio

Si usted escogió, trasladar o restaurar, por favor, dé las sugerencias. _____

3. Comentarios Adicionales _____

(INFORMACION OPCIONAL) :

Nombre/Negocio _____

Dirección _____

Numero de Teléfono _____

Dirección de Correo Electrónico _____

Recorrido y Evaluación del Parque de Collyer

La Asociación Histórica del Vencindario del Eastside recibió una beca de los Fondos de la Mejora del Vencindario para producir un plan maestro para el Parque de Collyer. Los fondos están sólo disponibles para el diseño. No hay dinero disponible para usar en el plan maestro final. Sin embargo, el plan maestro nos ayudará en nuestras aplicaciones futuras para obtener becas del vencindario.

El Comité del plan maestro del Parque de Collyer ha desarrollado una evaluación de características existentes del parque que uno mismo puede completar caminando, así que los individuos y las familias pueden explorar y evaluar el parque. El viaje comienza en esquina sudoeste del parque (6 & cruce de Collyer) y va a través del parque. Hay 7 estaciones para hacer los comentarios (vea el mapa incluido). Preguntas adicionales están incluidas en este formulario que se refieren a elementos específicos localizados a través del parque. Si usted conoce el parque bien, puede completar este formulario sin visitar el parque.

Por favor, coloque el formulario completado en el buzón titulado "Coloque Los Formularios Completados Aquí" localizado en el oeste de las canchas de voliebol.

Al principio del 2003 (busque la información venidera), el comité tendrá una reunión del vencindario para discutir las conclusiones del recorrido en el parque, hablar un poco de la historia del parque y reunir los comentarios adicionales del vencindario antes de diseñar nuevamente el parque.

¡GRACIAS POR SU TIEMPO!

LA ESTACION #1: Base Para Las Flores Anuales (esquina del sudoeste de 6 & Collyer).

1. Circule el número que represente como le gusta la base para las flores anuales (1 = excelente 5 = poco).
Condición General 1 2 3 4 5

2. ¿Qué debemos hacer con la base para las flores anuales?
A) quitar B) trasladar C) restaurar D) no cambio

Si usted escogió, trasladar o restaurar, por favor, de las sugerencias. _____

3. Comentarios Adicionales _____

LA ESTACION #2: El Refugio Nuevo (esquina del sudoeste del parque)

1. Circule el número que represente como le gusta el refugio nuevo (1 = excelente 5 = poco).

Condición General 1 2 3 4 5

Mesas/Parrilla 1 2 3 4 5

Accesibilidad 1 2 3 4 5

2. ¿Qué debemos hacer con el refugio nuevo?
A) quitar B) trasladar C) restaurar D) no cambio

Si usted escogió, trasladar o restaurar, por favor, dé las sugerencias. _____

3. Comentarios Adicionales _____

LA ESTACION #3: Baños Públicos

1. Circule el número que represente como le gustan los baños públicos (1 = excelente 5 = poco).

Condición General 1 2 3 4 5

Accesibilidad 1 2 3 4 5

2. ¿Qué debemos hacer con los baños públicos?
A) quitar B) trasladar C) restaurar D) no cambio

Si usted escogió, trasladar o restaurar, por favor, dé las sugerencias. _____

3. Comentarios Adicionales _____

ADDITIONAL QUESTIONS

QUESTION #1: Park Lighting

1. Circle the number that represents your rating of the park lighting, excluding street lights (1= excellent 5= poor).
Overall Condition 1 2 3 4 5
2. What should we do with the park lighting? a) remove b) relocate c) renovate d) no change
If you chose, relocate or renovate, please give suggestions. _____

3. Additional Comments _____

QUESTION #2: Park Benches (benches are fairly new)

1. Circle the number that represents your rating of the park benches (1= excellent 5= poor).
Overall Condition 1 2 3 4 5
Amount 1 2 3 4 5
Accessibility 1 2 3 4 5
2. What should we do with the park benches? a) remove b) relocate c) renovate d) no change
If you chose, relocate or renovate, please give suggestions. _____

3. Additional Comments _____

QUESTION #3: Multi-Use Grass Areas (north and east of the new shelter & west of playground).

1. Circle the number that represents your rating of the multi-use grass areas (1= excellent 5= poor).
Overall Condition 1 2 3 4 5
Size 1 2 3 4 5
2. Should these areas be changed to a specific use? a) yes b) no c) undecided
If yes, please give suggestions. _____

3. Additional Comments _____

QUESTION #4: Existing Vegetation (trees and shrubs).

1. Circle the number that represents your rating of the existing vegetation (1= excellent 5= poor).
Trees Overall Condition 1 2 3 4 5
Shrubs Overall Condition 1 2 3 4 5
2. Would you like to see more shade or less shade? a) more shade b) less shade c) undecided
If so, where? _____

3. Would you like to see more landscape varieties or less? a) more varieties b) less varieties c) undecided
If so, what? _____

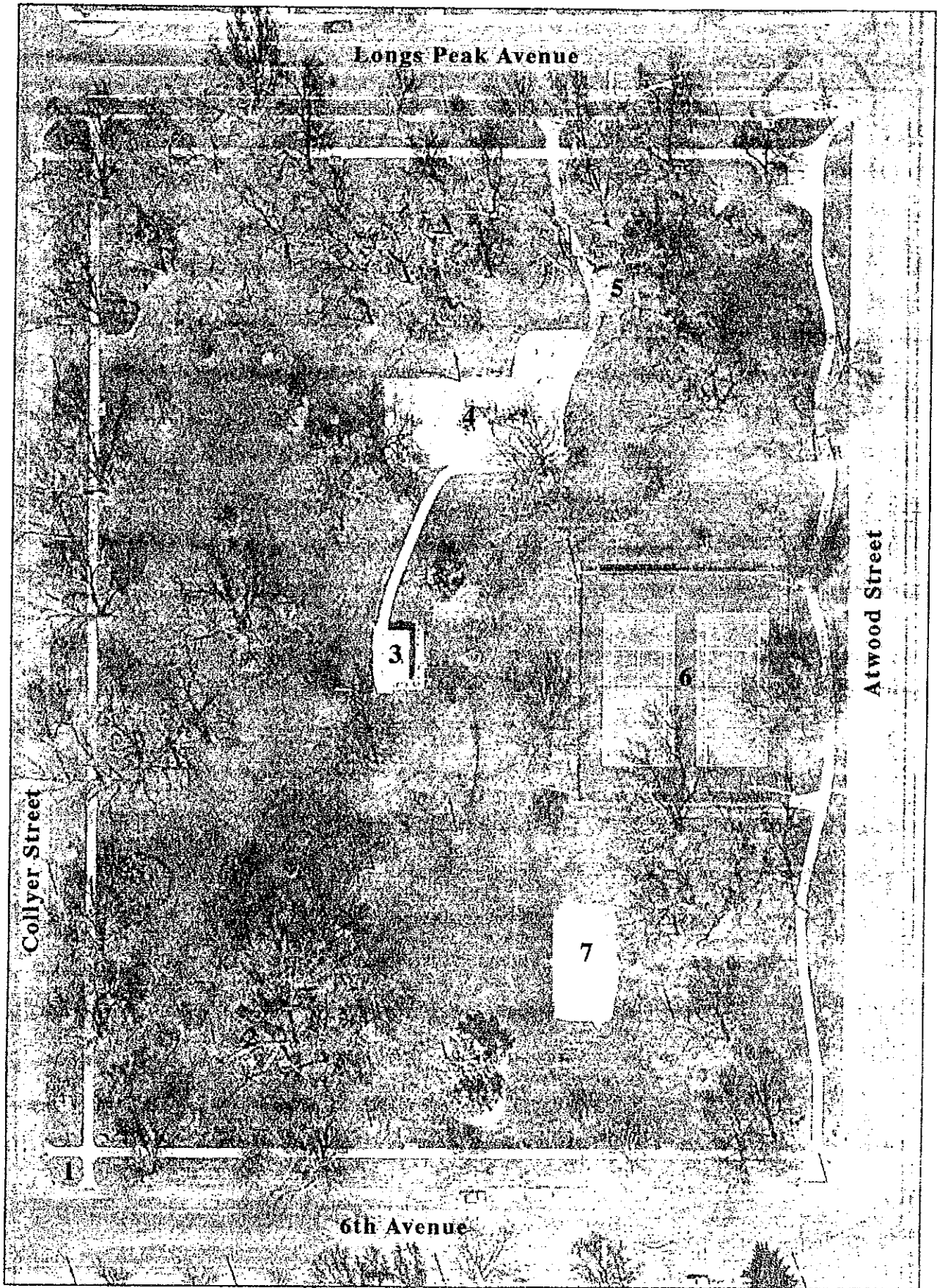
QUESTION #5: Are there any other existing features in the park that you like or dislike?

1. Like and why? _____

2. Dislike and why? _____

3. If dislike, how would you like to see it changed? _____

Collyer Park



Longs Peak Avenue

5

4

3

6

7

Collyer Street

Atwood Street

6th Avenue

COLLYER PARK EVALUATION & WALKING TOUR

The Historic Eastside Neighborhood Association received a grant from the Neighborhood Improvement Fund to produce a Master Plan for Collyer Park. Funds are only available for the design. No money is available to implement the Final Master Plan. However, the Master Plan will help our future applications for neighborhood block grants.

Collyer Park Master Plan Committee has developed an evaluation of existing park features that can be completed as a self-guided walking tour so individuals or families may explore and assess the park site. The tour begins at the southwest corner of the park (6th & Collyer intersection) and meanders through the park. There are 7 stations to make comment (see the attached map). Additional questions are also included that address specific park elements located throughout the park. If you know the park well, feel free to complete the form without taking the tour.

Please place the completed form in the mailbox titled "Place Completed Forms Here" located west of the sand volleyball court.

Sometime in early 2003 (look for upcoming information), the committee will conduct a neighborhood meeting to discuss the walking tour findings, give a history of the park site and gather additional neighborhood comments prior to redesigning the park.

THANK YOU FOR YOUR TIME!

STATION #1: Raised Annual Plant Bed (southwest corner of 6th & Collyer). This annual plant bed is made from segmented masonry units.

- Circle the number that represents your rating of the raised annual plant bed (1= excellent 5= poor).

Overall Condition	1	2	3	4	5
-------------------	---	---	---	---	---
- What should we do with the existing raised annual bed? a) remove b) relocate c) renovate d) no change
 If you chose, relocate or renovate, please give suggestions. _____

- Additional Comments _____

STATION #2: New Shelter (southwest corner of site)

- Circle the number that represents your rating of the shelter (1= excellent 5= poor).

Overall Condition	1	2	3	4	5
Tables/Grill	1	2	3	4	5
Accessibility	1	2	3	4	5
- What should we do with the new shelter? a) remove b) relocate c) renovate d) no change
 If you chose, relocate or renovate, please give suggestions. _____

- Additional Comments _____

STATION #3: Public Restrooms Building

- Circle the number that represents your rating of the public restrooms building (1= excellent 5= poor).

Overall Condition	1	2	3	4	5
Accessibility	1	2	3	4	5
- What should we do with the public restrooms building? a) remove b) relocate c) renovate d) no change
 If you chose, relocate or renovate, please give suggestions. _____

- Additional Comments _____

STATION #4: Playground

1. Circle the number that represents your rating of the playground (1= excellent 5= poor).

Overall Condition	1	2	3	4	5
Play Equipment	1	2	3	4	5
Accessibility	1	2	3	4	5
Seating	1	2	3	4	5

2. What should we do with the playground? a) remove b) relocate c) renovate d) no change

If you chose, relocate or renovate, please give suggestions. _____

3. Additional Comments _____

STATION #5: Shelter (northeast corner of site)

1. Circle the number that represents your rating of the shelter (1= excellent 5= poor).

Overall Condition	1	2	3	4	5
Tables/Grills	1	2	3	4	5
Accessibility	1	2	3	4	5

2. What should we do with the existing shelter? a) remove b) relocate c) renovate d) no change

If you chose, relocate or renovate, please give suggestions. _____

3. Additional Comments _____

STATION #6: Lighted Tennis Courts (tennis courts have recently been renovated)

1. Circle the number that represents your rating of the lighted tennis courts (1= excellent 5= poor).

Overall Condition	1	2	3	4	5
Lighting	1	2	3	4	5
Accessibility	1	2	3	4	5

2. What should we do with the lighted tennis courts? a) remove b) relocate c) renovate d) no change

If you chose, relocate or renovate, please give suggestions. _____

3. Additional Comments _____

STATION #7: Sand Volleyball Court

1. Circle the number that represents your rating of the sand volleyball court (1= excellent 5= poor).

Overall Condition	1	2	3	4	5
Size	1	2	3	4	5
Accessibility	1	2	3	4	5

2. What should we do with the sand volleyball court? a) remove b) relocate c) renovate d) no change

If you chose, relocate or renovate, please give suggestions. _____

3. Additional Comments _____

(OPTIONAL INFORMATION):

Name _____

Address _____

Phone Number _____

Email Address _____