

**Prairie\***

- Irrigated tall, mid and short grass prairie (see plant list, page 41).
  - Fluvial landform grading.
  - Crusher fines loop trail.
  - Cottonwood tree plantings along slopes and banks.
  - Drainage swales and PVC drainage pipe.
  - Shrub and wildflower plantings (see plant list).
- Benches
  - Low level interpretation keyed to brochure hand out.
- \*(Refer to construction documents - Roger's Grove Prairie - Phase I, for detailed grading and seeding plans).

**River Edge**

- Revegetation and enhancement of habitat
- Interpretation of riparian habitat from Greenway trail

**Boulder County Open Space Pond**

**Picnic Grove and Pond Edge**

- Cottonwood Grove w/ irrigated native grass understory.
- Picnic tables (3 to 5)
- Regraded pond edge w/ crusher fines trail to access water, widened "shelf" area near pond, and enhanced habitat.
- Redirected drainage swale w/ cottonwoods along banks.

**Greenway Trailhead Area**

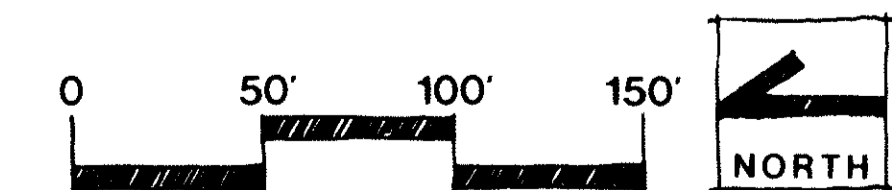
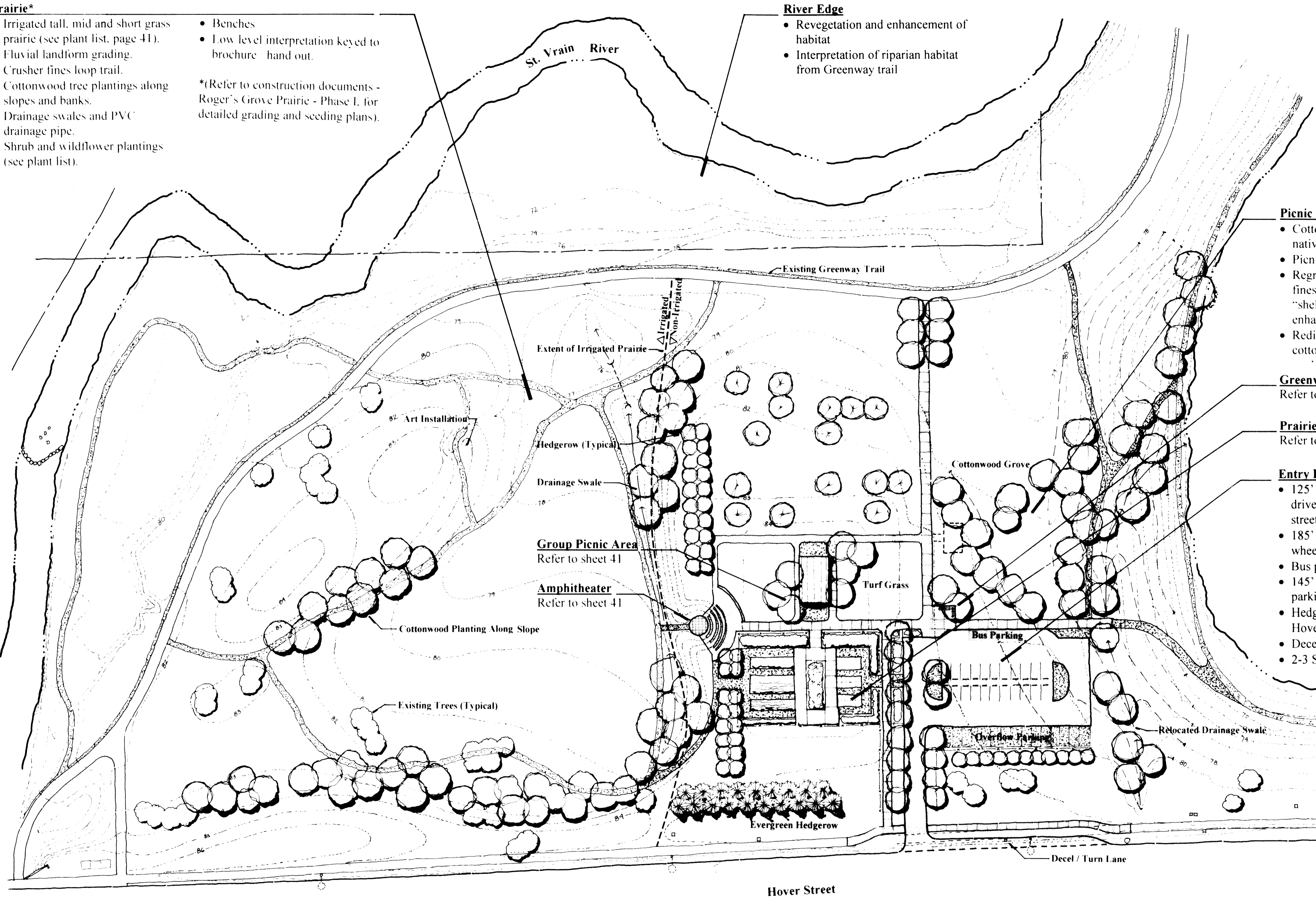
Refer to sheet 41

**Prairie and Xeriscape Interpretative Garden**

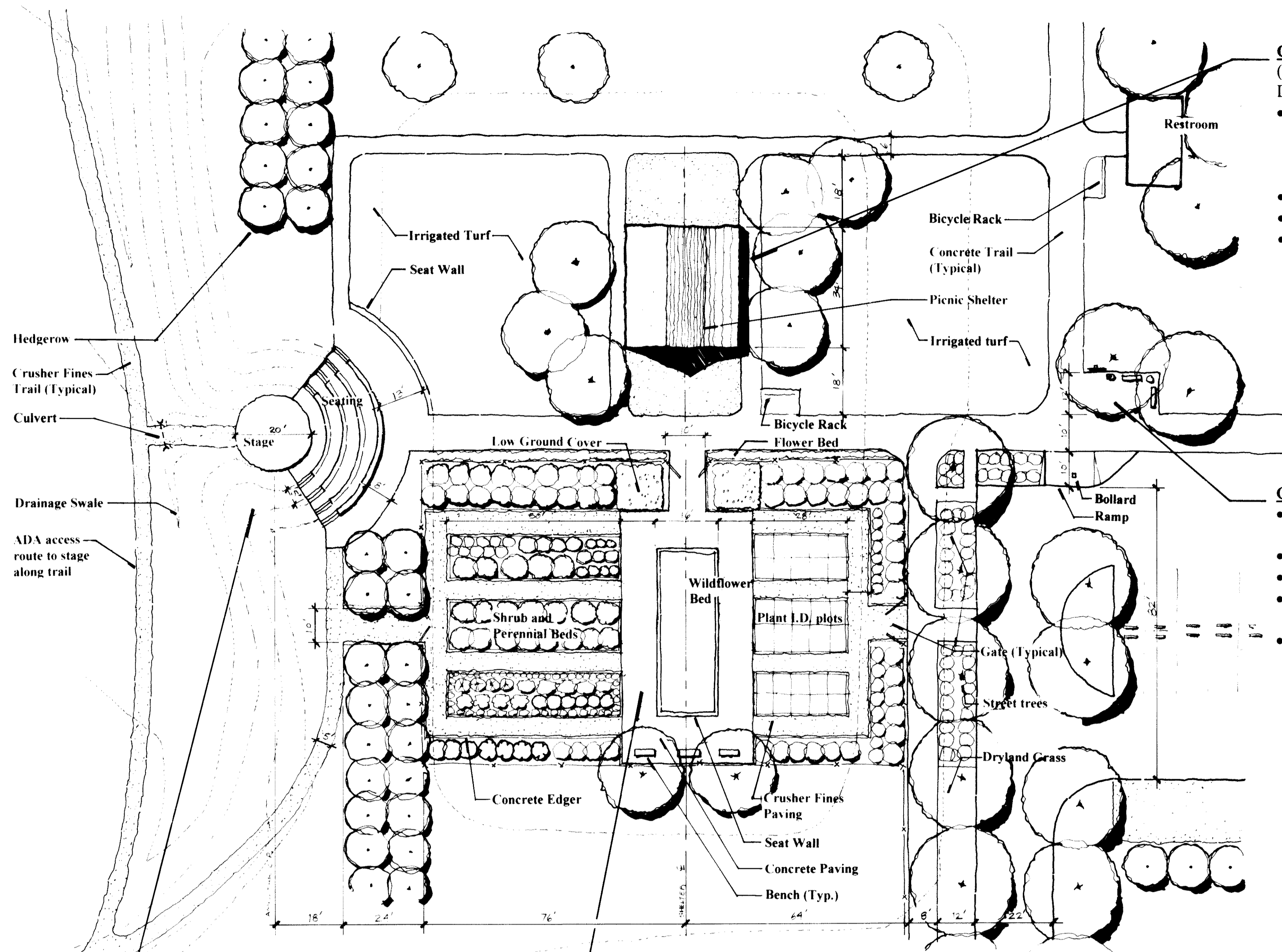
Refer to sheet 41

**Entry Drive and Parking Lot**

- 125' x 22' wide asphalt entry drive lined w/ split rail fence and street trees.
- 185' x 90' asphalt parking lot w/ wheel stops.
- Bus parking and drop off area.
- 145' x 20' gravel overflow parking.
- Hedgerow to screen parking from Hover Street.
- Decel lane on northbound Hover
- 2-3 Street lights in parking lot



# Roger's Grove Site Plan



- Group Picnic Area**  
(Refer to Sht. 42 for Picnic Shelter Drawings)
- Picnic structure (8-12 table capacity) w/ separate picnic areas for large and small groups, divided by interpretative panels
  - Irrigated turfgrass area
  - Electrical power outlets
  - Separate restroom bldg w/ 2 stalls each for men and women

- Greenway Trailhead**
- Greenway rules and regs sign w/ map
  - 2 Benches and trash receptacle
  - Adjacent tree planting for shade
  - 10' concrete trail connecting to main Greenway trail
  - Ramp w/ bollard for maintenance vehicle access

**Plant List**

- Prairie**
- |                    |                     |                      |
|--------------------|---------------------|----------------------|
| Grasses            | Shrubs              | Forbs / Wildflowers  |
| Switchgrass        | Rabbitbrush         | Gay Feather          |
| Big Bluestem       | Fringed Sage        | Evening Primrose     |
| Yellow Indiangrass | Tall Western Sage   | Milk Vetch           |
| Sand Bluestem      | Sand Sagebrush      | Mountain Bladder Pod |
| Sand Lovegrass     | Winterfat           | Bee Plant            |
| Prairie Sandreed   | Fourwinged Saltbush | Blanket Flower       |
| Western Wheatgrass |                     |                      |
| Blue Grama         |                     |                      |
| Side-oats Grama    |                     |                      |
| Prairie Junegrass  |                     |                      |
| Little Bluestem    |                     |                      |
| Buffalograss       |                     |                      |
| Indian Ricegrass   |                     |                      |
| Needle and Thread  |                     |                      |

- Hedgerow and Screens**
- |                        |                     |
|------------------------|---------------------|
| Lanceleaf Cottonwood   | <b>Street Trees</b> |
| Rocky Mountain Juniper | Hackberry           |
| Ponderosa Pine         | Summit Green Ash    |
| Native Chokecherry     | Turkish Filbert     |
| American Plum          | Bur Oak             |
| Gambel Oak             |                     |
| Wasatch Maple          |                     |

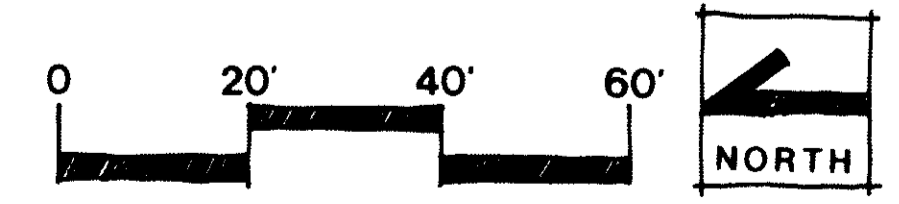
- Prairie Plants**
- |                      |                   |
|----------------------|-------------------|
| Plains Cottonwood    | <b>Pond Edge</b>  |
| Lanceleaf Cottonwood | Plains Cottonwood |
| Summit Green Ash     | Peachleaf Willow  |

- Interpretive Garden**
- Prairie Plants**  
Refer to Prairie Plant List

- Xeriscape Plants**
- |                          |                                    |
|--------------------------|------------------------------------|
| <b>Shrubs</b>            | <b>Groundcovers and Perennials</b> |
| Saskatoon Serviceberry   | Yarrow                             |
| Lead Plant               | Kinnikinnick                       |
| Mountain Mohogany        | Silvermound                        |
| Fernbush                 | Native Bluebells                   |
| Cliffrose                | Snow-in-Summer                     |
| Apache Plume             | Coreopsis                          |
| Russian Sage             | Wallflower                         |
| Native Ninebark          | Sunrose                            |
| Potentilla               | Bearded Iris                       |
| Nanking Cherry           | Red Hot Poker                      |
| Bitter Antelopebush      | Blue Flax                          |
| Dwarf Fragrant Sumac     | Colorado Creeding Holly            |
| Rocky Mountain Sumac     | Penstemon (various, native)        |
| Threeleaf Sumac          | Black Eyed Susan                   |
| Alpine Currant           | Sedum (various)                    |
| Yellow Flowering Currant | Hens and Chicks                    |
| Squaw Currant            | Lambs Ear                          |
| Gooseberry               | Wooly Thyme                        |
| Native Shrub Roses       | Zinnia Grandiflora                 |
|                          | Native Poppy                       |
|                          | Pussy Toes                         |
|                          | Native Larkspur                    |
|                          | Native Asters                      |

- Amphitheater**
- Sandstone, concrete or crusher fines stage
  - Sandstone benches and steps
  - Concrete or crusher fines paving in aisles and between benches
  - 5' wide rows, 18" rise between rows

- Interpretive Garden**
- Raised wildflower bed w/ seat wall
  - Prairie and Xeriscape shrubs in groups of 3+ per species
  - Prairie and Xeriscape perennials in groups of 5+ per species
  - 5' x 5' identification plots w/ 1-3 plant species per plot
  - High level interpretation w/ identification tags and small signs for each plant species, and a brochure w/ general plan and site description
  - Concrete paving in central area; crusher fines in remaining area
  - 6" concrete edger flush w/ paving around all beds except wildflower bed
  - Benches
  - Irrigation system throughout
  - Split rail or wire farm fence enclosing garden w/ securable gates at each entrance
  - Donor recognition plaque at main (east) entrance



# Roger's Grove-Central Area Enlargement