

“COLORADOSCAPE SAMPLER”



DESCRIPTION

Let's rebrand the word 'xeriscaping' into...ColoradoScaping – a shift to native Colorado drought-tolerant plants that thrive in our landscape, while saying goodbye to water-hogging Kentucky bluegrass. Ready to test the waters of ColoradoScaping without diving in headfirst? This design is for you! With three ColoradoScape zones to choose from, you can start small and build up, or go all-in at once. Go for all three, and you'll transform nearly 500 sq ft of water-thirsty grass into a sustainable oasis—saving about **10,000** gallons of water every summer. Flip to Page 4 for budget-friendly tips and ways to tweak the design to make it truly yours. Water-saving, pollinator-friendly, native and drought-tolerant plants, all with zero chemicals! This is what we call “ColoradoScaping”.



info@climatescaping.com

www.climatescaping.com

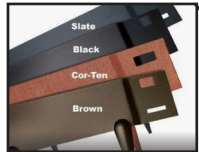


"COLORADOSCAPE SAMPLER"

2



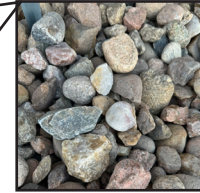
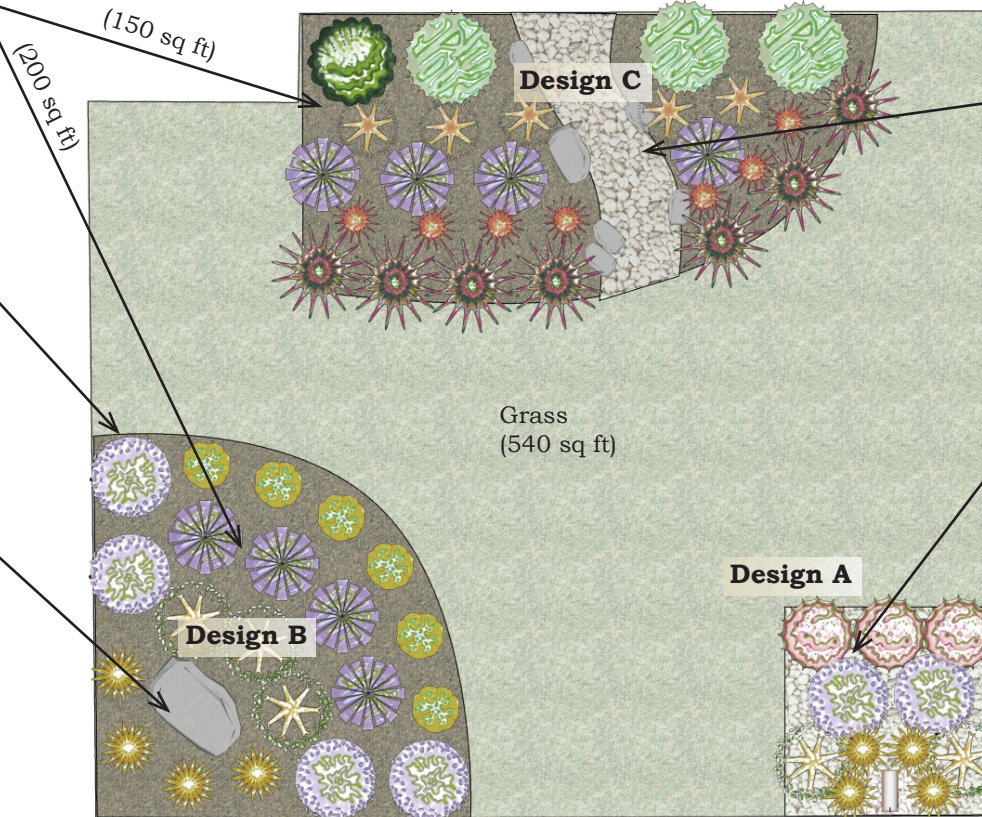
Mulch



Edging



Boulders



Pueblo Grey 1 1/2"

(30 sq ft)

(60 sq ft)

(200 sq ft)

(150 sq ft)

Grass
(540 sq ft)

WHAT'S YOUR YARD SIZE? - All yards are different and this particular design is crafted for three different 60-200 sq ft areas within your front yard for you to choose from...but don't worry if your space is a bit bigger or smaller! We just need to do our magic and tweak the number of plants, rocks, mulch, and labor to fit your yard's personality, size and budget. Contact Climatescaping below to help make it a perfect fit!



 **GAYFEATHER, KOBOLD**
Liatris spicata 'Kobold'
H:21" W:15"



 **SUNSET HYSSOP**
Agastache rupestris
H:2' W:2'



 **ROZANNE CRANESBILL**
Geranium 'Rozanne'
H:13" W:33"



 **GAILLARDIA ARIZONA SUN BLANKET FLOWER**
Gaillardia grandiflora 'Arizona Sun'
H:10" W:10"




MORNING LIGHT MAIDEN GRASS
Miscanthus sinensis 'Morning Light'
H:4' W:2'



 **BLONDE AMBITION GRASS**
Bouteloua gracilis 'Blonde Ambition'
H:2' W:2'



 **GOLDEN MONEYWORT CREEPING JENNY**
Lysimachia nummularia 'Aurea'
H:3" W:16"



 **ECHINACEA MAGNUS CONEFLOWER**
Echinacea purpurea 'Magnus'
H:30" W:20"



 **PHENOMENAL LAVENDER**
Lavandula intermedia 'Niko'
H:2' W:20"



 **ORANGE CARPET HUMMINGBIRD TRUMPET**
Zauschneria garrettii 'Orange Carpet'
H:3' W:18"



DWARF BLUE SPRUCE GLOBE
Picea pungens 'Glauca Globosa'
H:4' W:5'



info@climatescaping.com

www.climatescaping.com

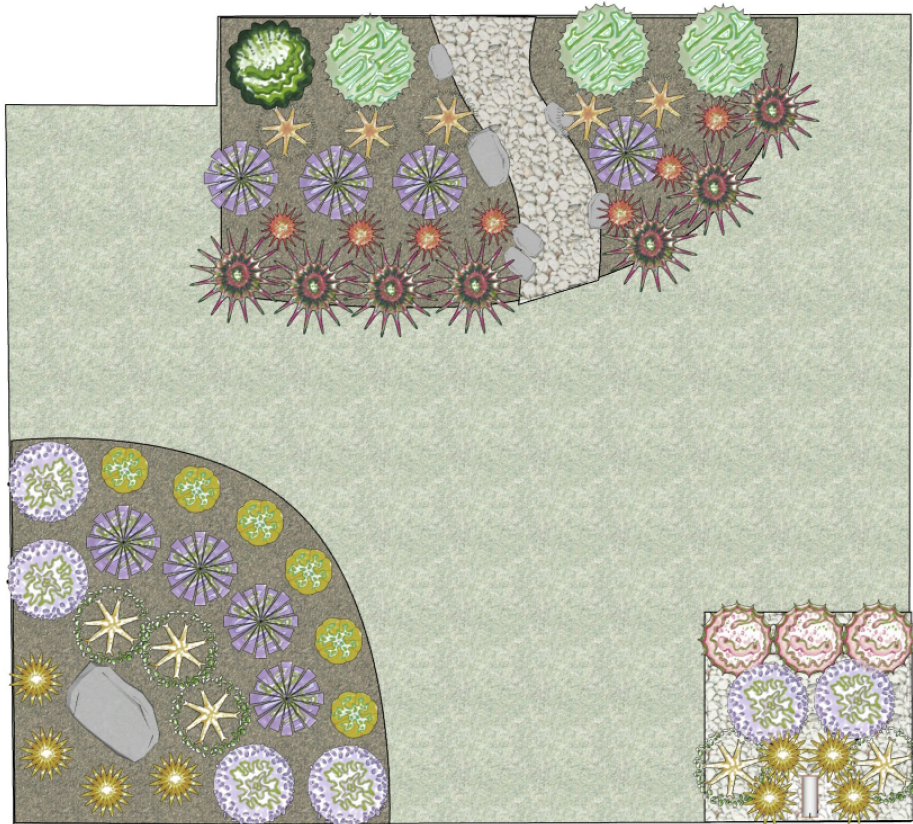


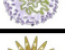
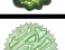
"COLORADOSCAPE SAMPLER"

3

HOW TO BRING YOUR NEW DESIGN TO LIFE:

1. Page 2: Find all your materials in the square boxes—complete with the right quantities!
2. Page 2: Use the plant pics to imagine your yard's new look.
3. Page 4: Find out how to swap rocks, mulch, and plant varieties.
4. Page 3: See the Plant Legend for what kind and how many plants to order
5. Page 3 & 4: Arrange and plant like a pro with the tips on planting.
6. Most importantly, have a blast and enjoy your new yard!



Plant Legend			
Symbol	Qty	Common	Botanical
	7	Blanket Flower	Gaillardia x grandiflora 'Arizona Sun'
	3	Blazing Star, Liatris, Gayfeather	Liatris spicata 'Kobold'
	5	Blonde Ambition Grama Grass	Bouteloua gracilis 'Blonde Ambition'
	6	Coneflower	Echinacea purpurea 'Magnus'
	6	Cranesbill Geranium	Geranium 'Rozanne'
	8	Creeping Jenny	Lysimachia nummularia 'Aurea'
	1	Dwarf Globe Blue Spruce	Picea pungens 'Glaucia Globosa'
	3	Maiden Grass, Morning Light	Miscanthus sinensis 'morning light'
	7	Orange Carpet Trumpet	Zauschneria garrettii 'Orange Carpet'
	8	Phenomenal Lavender	Lavandula intermedia 'Niko'
	5	Sunset Hyssop	Agastache rupestris



info@climatescaping.com

www.climatescaping.com



"COLORADOSCAPE SAMPLER"

COST DESIGN A

Sod Removal = \$120
Irrigation = \$52.50
Rock = \$90
Mulch = \$0
Tree = \$0
Plants = \$204.29
Metal Edging = \$72
Boulders = \$0



Total DIY = \$538.79
Total Professional Installation
= \$1,038.79

COST DESIGN B

Sod Removal = \$400
Irrigation = \$67.50
Rock = \$0
Mulch = \$196
Tree = \$0
Plants = \$469.29
Metal Edging = \$72
Boulders = \$29.25

Total DIY = \$1,234.04
Total Professional Installation
= \$2,384.04

COST DESIGN C

Sod Removal = \$400
Irrigation = \$27.50
Rock = \$97
Mulch = \$147
Tree = \$0
Plants = \$727
Metal Edging = \$120
Boulders = \$0

Total DIY = \$1,518.50
Total Professional Installation
= \$2,668.50

*prices as of Fall 2024, does not include weed barrier or soil amendments

HOW TO PLANT

- A. Dig a Hole** 2X as wide/deep as the root ball
- B. Place and Plant** gently loosen/ water the roots
- C. Backfill with Soil** from area, handful or 2 of compost, and a TBSP of fertilizer
- D. Thoroughly Soak** to help settle the soil
- E. Spread Mulch** around plant to retain moisture
- F. Irrigate** each plant with a drip-line emitter

KENTUCKY BLUE GRASS ALTERNATIVES

Replacing Kentucky BlueGrass can save **20,000 - 70,000** gallons of water per home, per summer

- 1.** Water-Wise Sod = EnviroTurf or Dog Tuff
- 2.** Seed with Clover or Tahoma 31
- 3.** Seed with a Blue Grama & Fescue Mix
- 4.** Or the Colorado Native Buffalo Grass
- 5.** Plant Fast-Spreading Ground Covers and Shrubs

LET CLIMATESCAPING HELP YOU AFTER YOUR DESIGN (HERE IN COLORADO)

- 1.** Customize your personal preferred plant pallet (but let us help you choose the right plants for the right place based on sun/shade and what grows best here)
- 2.** We can help you expand or shrink this design based on the size of your yard
- 3.** Change the shape of each element without losing the design
- 4.** We can help you with: boulders, paver pathways, trees in the right place, switch rock/mulch colors, rock rivers, raised beds, bunny control, which ground covers or drought tolerant plants are best for your yard



info@climatescaping.com

www.climatescaping.com



IRRIGATION NEEDS

★ You will need to convert one irrigation zone to dripline. This will require hiring an irrigation specialist to do the proper work inside your manifold and lay new dripline piping. Then each plant needs it's own drip emitter to feed it water. ClimateScaping can help you get started with what to do.

WATER WISE

★ Waterwise landscaping is a game-changer for Colorado's dry climate, helping homeowners save precious water, lower utility bills, and create stunning, resilient landscapes that thrive even through droughts—making it a smart choice for both your wallet and the environment.

INCENTIVES

★ Water-saving rebates and incentives are on the way, and we'll make sure you're the first to know! Scan the QR code below to stay in the loop on how to score savings when you ColoradoScape your yard – because saving water and cash is a win-win!

WHERE TO GET SUPPLIES

- ★ For Rock, Mulch, Metal Edging, Boulders - Colorado Materials, Pioneer
- ★ For Irrigation Supplies - DBS, Home Depot, Lowes
- ★ For Plants/Trees - Tree Farm, Green Spot, Flower Bin
- ★ For Landscaping Installation Help - ClimateScaping can point you in the right direction