

“BALANCED BEAUTY” COLORADOSCAPE



DESCRIPTION

Let's rebrand the word 'xeriscaping' into...ColoradoScaping – a shift to native Colorado drought-tolerant plants that thrive in our landscape, while saying goodbye to water-hogging Kentucky bluegrass. This one's for those who want to make a splash with ColoradoScaping while still holding onto some classic lawn for weekend mows. With this half-and-half design, you'll save around **20,000** gallons of water each year and have plenty of space to customize and express your style while feeding pollinators and your environment. Flip to Page 4 for ideas on budget, tweaks, and making it your own. Water-saving, pollinator-friendly, native and drought-tolerant plants, all chemical-free.



info@climatescaping.com

www.climatescaping.com



"BALANCED BEAUTY" COLORADOSCAPE

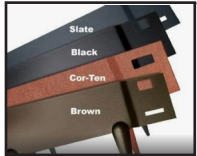
2



2"-4" White Cobble Rock (115 sq ft)



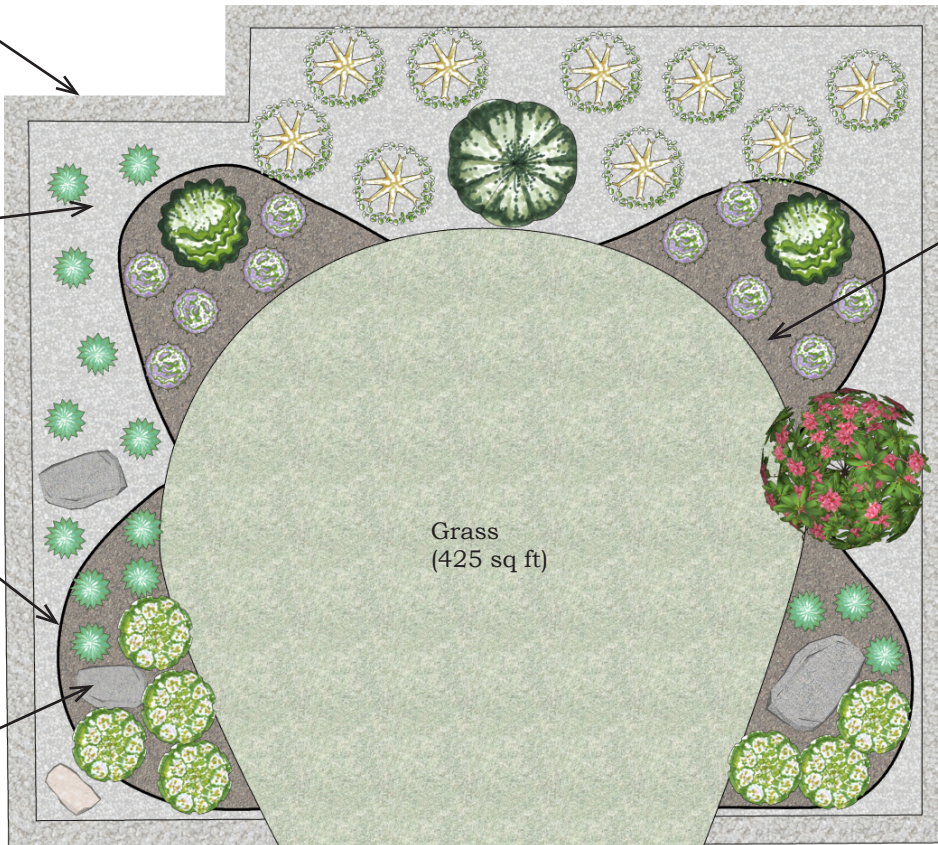
Grey Granite Chip (313 sq ft)



Edging



Boulders



Mulch (147 sq ft)

WHAT'S YOUR YARD SIZE? - All yards are different and this particular design is crafted for a 1,000 sq ft front yard in mind... but don't worry if your space is a bit bigger or smaller! We just need to do our magic and tweak the number of plants, rocks, mulch, and labor to fit your yard's personality, size, and budget. Contact ClimateScaping below to help make it a perfect fit!



BLONDE AMBITION GRASS
Bouteloua gracilis 'Blonde Ambition'
H:2' W:2'



BLUE FESCUE GRASS
Festuca glauca
H:10" W:10"



MANZANITA PANCHITO
Arctostaphylos manzanita
H:12" W:30"



MUGHO PINE DWARF
Pinus mugho 'Pumilio'
H:4' W:6'



MAY NIGHT SALVIA
Salvia nemorosa 'May Night'
H:20" W:15"



DWARF KOREAN LILAC TREE
Syringa meyeri 'Palibin'
H:7' W:4'



DWARF BLUE SPRUCE GLOBE
Picea pungens 'Glauca Globosa'
H:4' W:5'



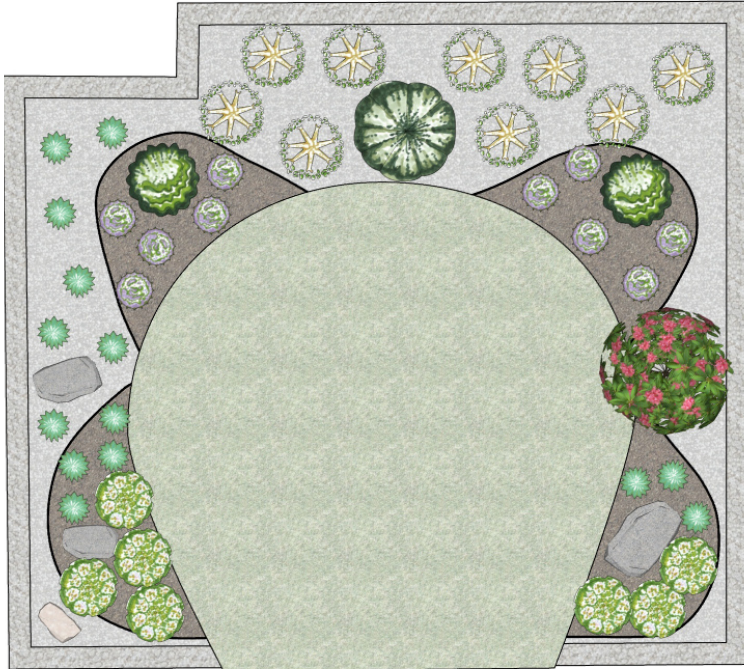
info@climatescaping.com








www.climatescaping.com



HOW TO BRING YOUR NEW DESIGN TO LIFE:

1. Page 2: Find all your materials in the square boxes—complete with the right quantities!
2. Page 2: Use the plant pics to imagine your yard's new look.
3. Page 4: Find out how to swap rocks, mulch, and plant varieties.
4. Page 3: See the Plant Legend for what kind and how many plants to order
5. Page 3 & 4: Arrange and plant like a pro with the tips on planting.
6. Most importantly, have a blast and enjoy your new yard!



Plant Legend			
Symbol	Qty	Common	Botanical
	9	Blonde Ambition Blue Grama	Bouteloua gracillis 'Blonde Ambition'
	14	Blue Fescue	Festuca glauca
	2	Dwarf Globe Blue Spruce	Picea pungens 'Glaucia Globosa'
	1	Dwarf Scented Korean Lilac	Lilac meyeri 'Palibin'
	7	Manzanita	Arctostaphylos manzanita 'Panchito'
	1	Mugho Pine	Pinus mugho 'Pumilo'
	10	Salvia	Salvia 'May Night'



"BALANCED BEAUTY" COLORADOSCAPE

4

COST

Sod Removal = \$2,000
Irrigation = \$110
Rock = \$399.50
Mulch = \$147
Tree = \$500
Plants = \$1,901
Metal Edging = \$528
Boulders = \$0

Total DIY = \$5,585.50

Total Professional Installation = \$8,575.50

*prices as of Fall 2024, does not include weed barrier or soil amendments

HOW TO PLANT

- A. Dig a Hole** 2X as wide/deep as the root ball
- B. Place and Plant** gently loosen/water the roots
- C. Backfill with Soil** from area, handful or 2 of compost, and a TBSP of fertilizer
- D. Thoroughly Soak** to help settle the soil
- E. Spread Mulch** around plant to retain moisture
- F. Irrigate** each plant with a drip-line emitter

IRRIGATION NEEDS

★ You will need to convert one irrigation zone to dripline. This will require hiring an irrigation specialist to do the proper work inside your manifold and lay new dripline piping. Then each plant needs it's own drip emitter to feed it water. ClimateScaping can help you get started with what to do.

WATER WISE

★ Waterwise landscaping is a game-changer for Colorado's dry climate, helping homeowners save precious water, lower utility bills, and create stunning, resilient landscapes that thrive even through droughts—making it a smart choice for both your wallet and the environment.

INCENTIVES

★ Water-saving rebates and incentives are on the way, and we'll make sure you're the first to know! Scan the QR code below to stay in the loop on how to score savings when you ColoroScape your yard – because saving water and cash is a win-win!

ADJUSTMENTS TO YOUR DESIGN

1. Add a Paver Pathway
2. Add a Rock Riverbed
3. Add a Small Tree
4. Add Decorative Boulders
5. Add Spreading GroundCovers

KENTUCKY BLUE GRASS ALTERNATIVES

Replacing Kentucky BlueGrass can save **20,000 - 70,000** gallons of water per home, per summer

1. Water-Wise Sod = EnviroTurf or Dog Tuff
2. Seed with Clover or Tahoma 31
3. Seed with a Blue Grama & Fescue Mix
4. Or the Colorado Native Buffalo Grass
5. Plant Fast-Spreading Ground Covers and Shrubs

LET CLIMATESCAPING HELP YOU AFTER YOUR DESIGN (HERE IN COLORADO)

1. Customize your personal preferred plant pallet (but let us help you choose the right plants for the right place based on sun/shade and what grows best here)
2. We can help you expand or shrink this design based on the size of your yard
3. Change the shape of each element without losing the design
4. We can help you with: boulders, paver pathways, trees in the right place, switch rock/mulch colors, rock rivers, raised beds, bunny control, which ground covers or drought tolerant plants are best for your yard

WHERE TO GET SUPPLIES

- ★ For Rock, Mulch, Metal Edging, Boulders - Colorado Materials, Pioneer
- ★ For Irrigation Supplies - DBS, Home Depot, Lowes
- ★ For Plants/Trees - Tree Farm, Green Spot, Flower Bin
- ★ For Landscaping Installation Help - ClimateScaping can point you in the right direction



info@climatescaping.com

www.climatescaping.com

