

"XERO TO HERO" COLORADOSCAPE



DESCRIPTION

Let's rebrand the word 'xeriscaping' into...ColoradoScaping – a shift to native Colorado drought-tolerant plants that thrive in our landscape, while saying goodbye to water-hogging Kentucky bluegrass. For the true ColoradoScape enthusiast ready to say goodbye to grass entirely (while still staying HOA-friendly)! This design brings 75% plant life to your yard, featuring our unique "Plant Bouquets"—swappable clusters of colorful flora to keep your yard looking vibrant and awe-inspiring. Save up to **30,000-40,000** gallons of water each summer and let your creativity bloom with help from our plant designers to mix and match bouquet ideas. Flip to Page 3 for ideas on budget, tweaks, and making it your own. Water-saving, pollinator-friendly, native and drought-tolerant plants, all chemical-free. Flip to page 4.



info@climatescaping.com

www.climatescaping.com



"XERO TO HERO" COLORADOSCAPE

2



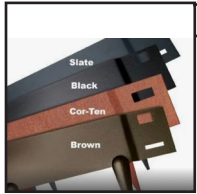
2"-4" Pueblo Grey Rock (280 sq ft)



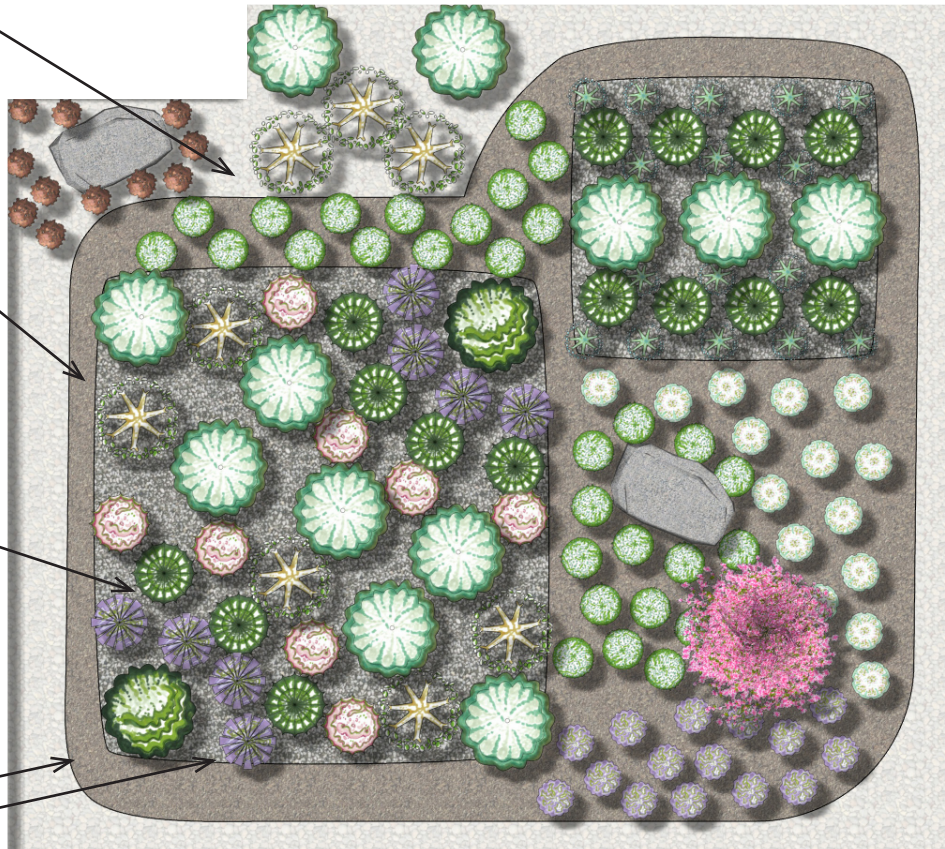
Mulch (355 sq ft)



Grey Granite Chip Rock (365 sq ft)



Edging



WHAT'S YOUR YARD SIZE? - All yards are different and this particular design is crafted for a 1,000 sq ft front yard in mind...but don't worry if your space is a bit bigger or smaller! We just need to do our magic and tweak the number of plants, rocks, mulch, and labor to fit your yard's personality and budget. Contact Climatescaping to help make it a perfect fit!



CORALBURST CRABAPPLE TREE
Malus 'Coral Burst'
H:12' W:12'



WINDY CITY ORNAMENTAL ONION
Allium 'Windy City'
H:1' W:1'



WHITE PHLOX
Phlox subulata
H:16" W:11"



BLUE PHLOX
Phlox subulata
H:5" W:18"



MIXED SEDUMS STONECROP VARIETIES
Sedum (mixed stonecrop)
H:6" W:18"



WOOLLY THYME
Thymus pseudolanuginosus
H:3" W:15"



BLONDE AMBITION GRASS
Bouteloua gracilis 'Blonde Ambition'
H:2' W:2'



HAMELN FOUNTAIN GRASS
Pennisetum alopecuroides 'Hameln'
H:2' W:2'



BLUE SPIREA BLUEBEARD
Caryopteris clandonensis 'Blue Mist'
H:4' W:4'



GAYFEATHER, KOBOLD
Liatris spicata 'Kobold'
H:21" W:15"



DARK BLUE VERONICA SPEEDWELL
Veronica hybrida 'Moody Blues'
H:13" W:13"



DWARF BLUE SPRUCE GLOBE
Picea pungens 'Glauca Globosa'
H:4' W:5'



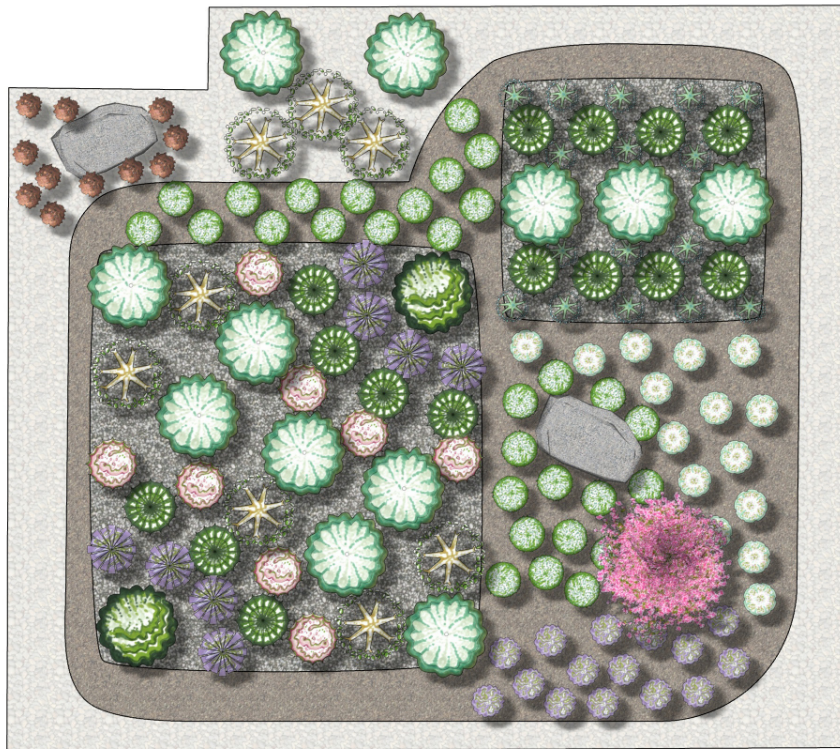
info@climatescaping.com

www.climatescaping.com



HOW TO BRING YOUR NEW DESIGN TO LIFE:

1. Page 2: Find all your materials in the square boxes—complete with the right quantities!
2. Page 2: Use the plant pics to imagine your yard's new look.
3. Page 4: Find out how to swap rocks, mulch, and plant varieties.
4. Page 3: See the Plant Legend for what kind and how many plants to order
5. Page 3 & 4: Arrange and plant like a pro with the tips on planting.
6. Most importantly, have a blast and enjoy your new yard!



Plant Legend			
Symbol	Qty	Common	Botanical
	8	Blazing Star, Liatris, Gayfeather	Liatris spicata 'Kobold'
	8	Blonde Ambition Blue Grama	Bouteloua gracilis 'Blonde Ambition'
	12	Blue Mist Bluebeard	Caryopteris clandonensis 'Blue Mist'
	15	Blue Phlox	Phlox subulata
	1	Crabapple - Coral Burst	Malus 'Coral Burst'
	8	Dark Blue Veronica Speedwell	Veronica hybrida 'Moody Blues'
	15	Dwarf Fountain Grass	Pennisetum alopecuroides 'Hameln'
	2	Dwarf Globe Blue Spruce	Picea pungens 'Glauca Globosa'
	11	Mixed Sedums Stonecrop varieties	Sedum (mixed stonecrop)
	16	Ornamental Onion	Allium 'Windy City'
	15	White Phlox	Phlox subulata
	30	Woolly Thyme	Thymus pseudolanuginosus



"XERO TO HERO" COLORADOSCAPE

4

COST

Sod Removal = \$2,000
Irrigation = \$267.50
Rock = \$705
Mulch = \$343
Tree = \$350
Plants = \$2,502.35
Metal Edging = \$432
Boulders = \$97.50

Total DIY = \$6,697.35

Total Professional Installation = \$10,147.35

*prices as of Fall 2024, does not include weed barrier or soil amendments

HOW TO PLANT

- A. Dig a Hole** 2X as wide/deep as the root ball
- B. Place and Plant** gently loosen/water the roots
- C. Backfill with Soil** from area, handful or 2 of compost, and a TBSP of fertilizer
- D. Thoroughly Soak** to help settle the soil
- E. Spread Mulch** around plant to retain moisture
- F. Irrigate** each plant with a drip-line emitter

IRRIGATION NEEDS

★ You will need to convert one irrigation zone to dripline. This will require hiring an irrigation specialist to do the proper work inside your manifold and lay new dripline piping. Then each plant needs it's own drip emitter to feed it water. ClimateScaping can help you get started with what to do.

WATER WISE

★ Waterwise landscaping is a game-changer for Colorado's dry climate, helping homeowners save precious water, lower utility bills, and create stunning, resilient landscapes that thrive even through droughts—making it a smart choice for both your wallet and the environment.

INCENTIVES

★ Water-saving rebates and incentives are on the way, and we'll make sure you're the first to know! Scan the QR code below to stay in the loop on how to score savings when you ColoroScape your yard – because saving water and cash is a win-win!

ADJUSTMENTS TO YOUR DESIGN

1. Add a Paver Pathway
2. Add a Rock Riverbed
3. Add a Small Tree
4. Add Decorative Boulders
5. Add Spreading GroundCovers

KENTUCKY BLUE GRASS ALTERNATIVES

Replacing Kentucky BlueGrass can save **20,000 - 70,000** gallons of water per home, per summer

1. Water-Wise Sod = EnviroTurf or Dog Tuff
2. Seed with Clover or Tahoma 31
3. Seed with a Blue Grama & Fescue Mix
4. Or the Colorado Native Buffalo Grass
5. Plant Fast-Spreading Ground Covers and Shrubs

LET CLIMATESCAPING HELP YOU AFTER YOUR DESIGN (HERE IN COLORADO)

1. Customize your personal preferred plant pallet (but let us help you choose the right plants for the right place based on sun/shade and what grows best here)
2. We can help you expand or shrink this design based on the size of your yard
3. Change the shape of each element without losing the design
4. We can help you with: boulders, paver pathways, trees in the right place, switch rock/mulch colors, rock rivers, raised beds, bunny control, which ground covers or drought tolerant plants are best for your yard

WHERE TO GET SUPPLIES

- ★ For Rock, Mulch, Metal Edging, Boulders - Colorado Materials, Pioneer
- ★ For Irrigation Supplies - DBS, Home Depot, Lowes
- ★ For Plants/Trees - Tree Farm, Green Spot, Flower Bin
- ★ For Landscaping Installation Help - ClimateScaping can point you in the right direction



info@climatescaping.com

www.climatescaping.com

