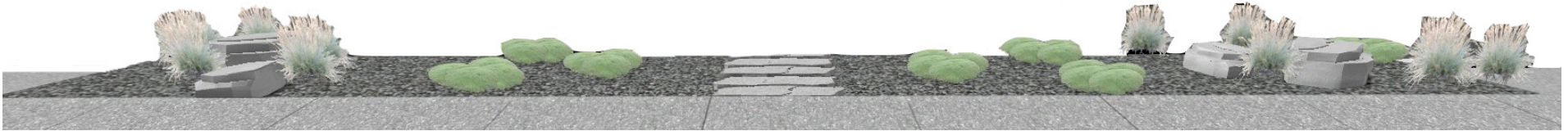


"SIDEWALK SERENITY" COLORADOSCAPE

CHOOSE FROM 2 DIFFERENT OPTIONS

A



B



DESCRIPTION

Let's rebrand the word 'xeriscaping' into...ColoradoScaping – a shift to native Colorado drought-tolerant plants that thrive in our landscape, while saying goodbye to water-hogging Kentucky bluegrass. Say goodbye to watering and mowing your tree lawn! This design offers two stylish, budget-friendly ways to transform your tree lawn into a ColoradoScape sensation. Pair it with Design #1, or add it later as you progress through Design #2 or #3. It's the perfect way to dip into the ColoradoScaping trend—and fair warning, it might become your new obsession! Water-saving, pollinator-friendly, native and drought-tolerant plants, all chemical-free.



info@climatescaping.com

www.climatescaping.com



"SIDEWALK SERENITY" COLORADOSCAPE

CHOOSE FROM 2 DIFFERENT OPTIONS

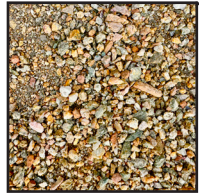
2



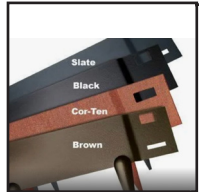
Steppers (5)



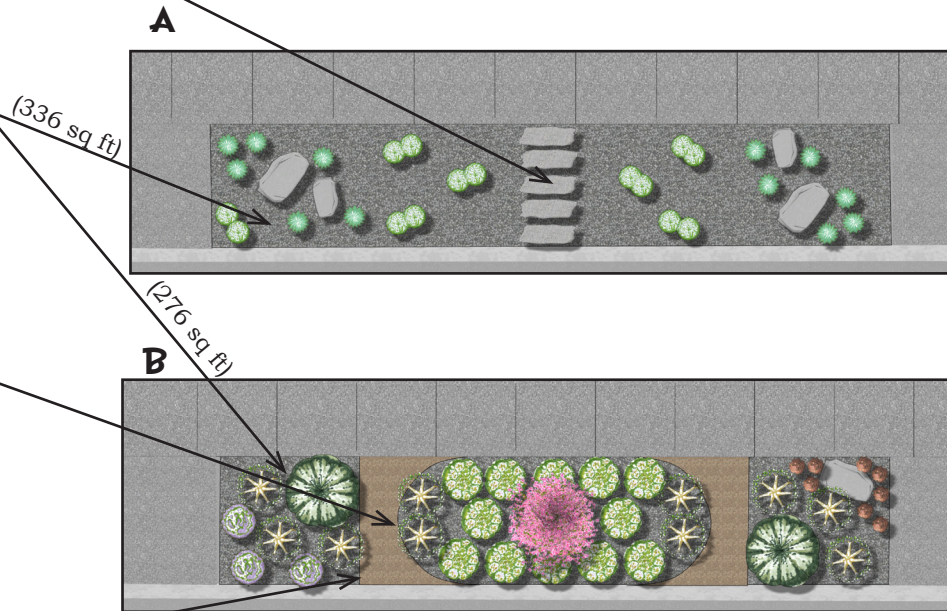
Grey Granite Chip
(336 sq ft)



Tan Breeze
(60 sq ft)



Edging



WHAT'S YOUR YARD SIZE? - All tree lawns are different and these particular designs are crafted for a 336 sq ft tree lawn in mind...but don't worry if your space is a bit bigger or smaller! We just need to do our magic and tweak the number of plants, rocks, mulch, and labor to fit your yard's personality and budget. Contact Climatescaping to help make it a perfect fit!



BLUE FESCUE GRASS

Festuca glauca
H:10" W:10"



WOOLLY THYME

Thymus pseudolanuginosus
H:3" W:15"



BLONDE AMBITION GRASS
Miscanthus sinensis 'Gracillimus'
H:2' W:2'



MIXED SEDUMS STONECROP VARIETIES
Sedum (mixed stonecrop)
H:6" W:18"



MANZANITA PANCHITO
Arctostaphylos manzanita
H:12" W:30"



MUGHO PINE DWARF
Pinus mugo
H:4' W:6'



CORALBURST CRABAPPLE TREE
Malus 'Royal Raindrops'
H:12' W:12'



MAY NIGHT SALVIA
Salvia nemorosa 'May Night'
H:20" W:15"



"SIDEWALK SERENITY" COLORADOSCAPE

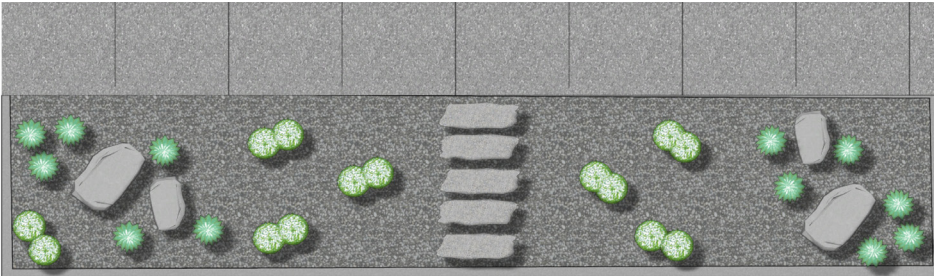
CHOOSE FROM 2 DIFFERENT OPTIONS

3


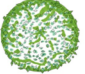
HOW TO BRING YOUR NEW DESIGN TO LIFE:

1. Page 2: Find all your materials in the square boxes—complete with the right quantities!
2. Page 2: Use the plant pics to imagine your yard's new look.
3. Page 4: Find out how to swap rocks, mulch, and plant varieties.
4. Page 3: See the Plant Legend for what kind and how many plants to order
5. Page 3 & 4: Arrange and plant like a pro with the tips on planting.
6. Most importantly, have a blast and enjoy your new yard!

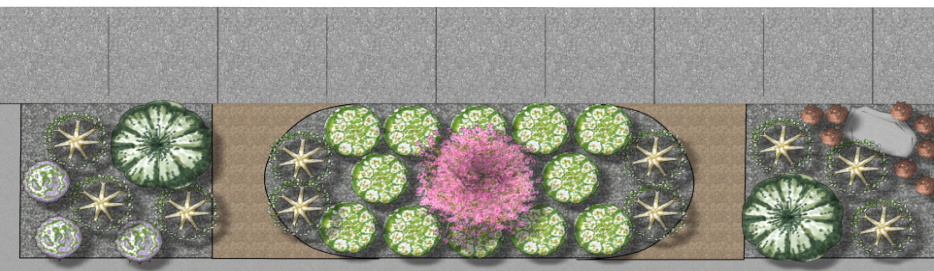
A




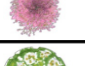
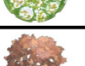

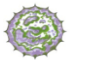

Plant Legend

Symbol	Qty	Common	Botanical
	12	Blue Fescue	Festuca glauca
	14	Woolly Thyme	Thymus pseudolanuginosus

B



Plant Legend

Symbol	Qty	Common	Botanical
	10	Blonde Ambition Grama Grass	Bouteloua gracilis 'Blonde Ambition'
	1	Coralburst Crabapple Tree	Malus 'Coral Burst'
	12	Manzanita	Arctostaphylos manzanita 'Panchito'
	8	Mixed Sedums Stonecrop varieties	Sedum (mixed stonecrop)
	2	Dwarf Mugho Pine	Pinus mugho 'Pumilo'
	3	Salvia	Salvia 'May Night'



info@climatescaping.com

www.climatescaping.com



COST DESIGN A

Sod Removal = \$672
Irrigation = \$65
Rock = \$399
Mulch = \$0
Tree = \$0
Plants = \$349.16
Metal Edging = \$0
Boulders = \$195

Total DIY = \$1,680.16
Total Professional Installation
= \$3,175.16

*prices as of Fall 2024, does not include weed barrier or soil amendments

COST DESIGN B

Sod Removal = \$672
Irrigation = \$85
Rock = \$255.50
Mulch = \$0
Tree = \$350
Plants = \$1,608
Metal Edging = \$120
Boulders = \$48.75

Total DIY = \$3,139.25
Total Professional Installation
= \$5,381.75

IRRIGATION NEEDS

★ You will need to convert one irrigation zone to dripline. This will require hiring an irrigation specialist to do the proper work inside your manifold and lay new dripline piping. Then each plant needs it's own drip emitter to feed it water. ClimateScaping can help you get started with what to do.

WATER WISE

★ Waterwise landscaping is a game-changer for Colorado's dry climate, helping homeowners save precious water, lower utility bills, and create stunning, resilient landscapes that thrive even through droughts—making it a smart choice for both your wallet and the environment.

INCENTIVES

★ Water-saving rebates and incentives are on the way, and we'll make sure you're the first to know! Scan the QR code below to stay in the loop on how to score savings when you ColoradoScape your yard – because saving water and cash is a win-win!

HOW TO PLANT

- A. Dig a Hole** 2X as wide/deep as the root ball
- B. Place and Plant** gently loosen/ water the roots
- C. Backfill with Soil** from area, handful or 2 of compost, and a TBSP of fertilizer
- D. Thoroughly Soak** to help settle the soil
- E. Spread Mulch** around plant to retain moisture
- F. Irrigate** each plant with a drip-line emitter

KENTUCKY BLUE GRASS ALTERNATIVES

Replacing Kentucky BlueGrass can save **20,000 - 70,000** gallons of water per home, per summer

- 1.** Water-Wise Sod = EnviroTurf or Dog Tuff
- 2.** Seed with Clover or Tahoma 31
- 3.** Seed with a Blue Grama & Fescue Mix
- 4.** Or the Colorado Native Buffalo Grass
- 5.** Plant Fast-Spreading Ground Covers and Shrubs

LET CLIMATESCAPING HELP YOU AFTER YOUR DESIGN (HERE IN COLORADO)

- 1.** Customize your personal preferred plant pallet (but let us help you choose the right plants for the right place based on sun/shade and what grows best here
- 2.** We can help you expand or shrink this design based on the size of your yard
- 3.** Change the shape of each element without losing the design
- 4.** We can help you with: boulders, paver pathways, trees in the right place, switch rock/ mulch colors, rock rivers, raised beds, bunny control, which ground covers or drought tolerant plants are best for your yard



info@climatescaping.com

www.climatescaping.com



WHERE TO GET SUPPLIES

- ★ For Rock, Mulch, Metal Edging, Boulders - Colorado Materials, Pioneer
- ★ For Irrigation Supplies - DBS, Home Depot, Lowes
- ★ For Plants/Trees - Tree Farm, Green Spot, Flower Bin
- ★ For Landscaping Installation Help - ClimateScaping can point you in the right direction