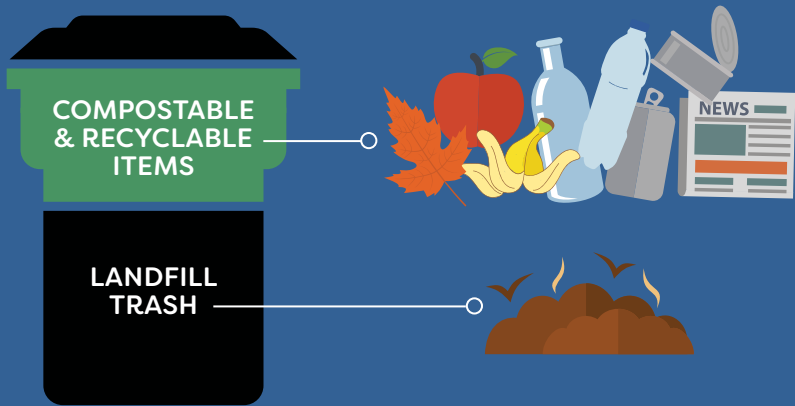


# WasteDiverter



## THINK BEFORE YOU THROW!

Much of what's in your trash cart could be recycled or composted



Nearly half of what's inside the average Longmont trash cart could be recycled or composted. That means you are most likely paying for more trash service than you need.

## RIGHT SIZE YOUR TRASH

ONLY PAY FOR WHAT YOU NEED!



LARGE

**\$26.30**

PER MONTH



MEDIUM

**\$14.10**

PER MONTH



SMALL

**\$7.10**

PER MONTH

### NEXT STEPS

**REDUCE** - Pay attention to what you purchase.

**REUSE** - Opt for items that go beyond single use & repair instead of replacing.

**RECYCLE** - Know what can be recycled and use your blue-lidded bin to max potential.

**COMPOST** - Sign up for curbside composting service or start a backyard compost bin.

### REPLACING & REPAIRING CONTAINERS

The City will repair or replace containers that incur damage through routine use at no cost to the customer. Call 303-651-8416 or visit [serviceworks.longmontcolorado.gov](http://serviceworks.longmontcolorado.gov) for more information.

**The City does NOT wash carts; this is the resident's responsibility:**

- In most cases, you can simply hose it out and let the water drain onto your yard
- For heavier duty cleaning, take it to a car wash
- There are professional service companies that specialize in trash cart washing — and they come to your home!

### WASTE PROGRAM MANAGEMENT & UPDATES

Reducing waste and diverting waste from landfills through recycling and composting is a critical part of achieving the Longmont City Council's directives and contributes to creating a clean and safe community and healthy ecosystems that support clean air, water and soil.

The City of Longmont is committed to zero waste efforts and has put an aggressive plan in place to reach those goals.

Learn more about the Universal Recycling Ordinance

[bit.ly/URO-Info](http://bit.ly/URO-Info)

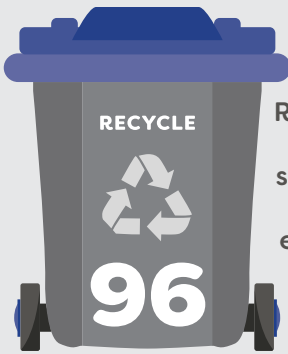
Extended Producer Responsibility information

[recyclingforallcoloradans.org](http://recyclingforallcoloradans.org)

Plastic Pollution Reduction Act information

[bit.ly/plastic-and-styrofoam](http://bit.ly/plastic-and-styrofoam)

## PUT MORE TO GOOD USE



RECYCLING

INCLUDED IN  
**TRASH**  
SERVICES

Recycle and compost services are picked up every other week



COMPOSTING

**\$9.90**  
PER MONTH



**\$9.90**  
PER MONTH

?

### WANT TO LEARN MORE?

Find more tips & tricks on our Waste Services blog

[bit.ly/waste-services-tips](http://bit.ly/waste-services-tips)

**CONTACT US**

[LongmontColorado.gov/WasteServices](http://LongmontColorado.gov/WasteServices)  
303-651-8416

Si usted necesita esta publicación en español favor de llamar al 303-651-8416



## SPECIAL COLLECTION DATES

### SPECIAL DISPOSAL DATES



#### PAPER SHREDDING EVENTS\*

Green Girl Recycling, 9 am–1 pm

JAN. 3 | FEB. 7 | MARCH 7

APRIL 4 | MAY 2 | JUNE 6

JULY 11 | AUG. 1 | SEPT. 5

OCT. 3 | NOV. 7 | DEC. 5

Dates and times are subject to change. Please visit [bit.ly/collection-schedule](http://bit.ly/collection-schedule) or download the Waste Services app to confirm.

#### FREE LANDFILL DROP DAYS\*

Front Range Landfill, 7 am–2 pm

JUNE 13 | AUG. 8

#### CURBSIDE SPRING BRANCH COLLECTION

APRIL 6–17

#### CURBSIDE FALL LEAF COLLECTION

OCT. 26 – NOV. 6

#### CHRISTMAS TREE RECYCLING

DEC. 26, 2026 – JAN. 4, 2027

The City of Longmont will provide four satellite Christmas tree drop-off locations. Please remove all holiday decorations and light strands from trees.

**Roosevelt Park** - In the parking lot South of 8th Avenue and Pratt Street by Roosevelt Activity Pool.

**Garden Acres Park** - In the parking lot at 18th Avenue and Tulip Street.

**Kanemoto Park** - In the parking lot at South Pratt Parkway and South Coffman Street.

**Centennial Park** - In the parking lot at Alpine Street and Verdant Circle.

In addition, you can recycle your Christmas tree at the [Longmont Recycling Center](#).

\*Please bring identification and a copy of your most recent Longmont utility bill.

## 24/7 WASTE SERVICES INFO

### LONGMONT WASTE SERVICES APP

Trash day has never been easier!

- Receive pickup reminders and service alerts
- Access the Waste Wizard
- Learn about special collection events and dates



Need help signing up? Call 303-651-8416



#### HOUSEHOLD & SPECIALTY RECYCLING



### LONGMONT RECYCLING CENTER

140 Martin St., Longmont

More details available at [LongmontColorado.gov/WasteServices](http://LongmontColorado.gov/WasteServices) or by calling 303-651-8416

**Hours of Operation:** Cardboard and single stream drop-off bins are available 24/7. All other drop-off areas are open Monday–Saturday from 8 am–4 pm. The LRC is closed for holidays and may be closed for severe weather events.

#### MATERIALS ACCEPTED

- Tree limbs and leaves
- Single stream recycling materials
- Cardboard
- Bulky metals (item must be 50% metal or more)
- Cooking and motor oils (1 gal. containers only 5 gal. max/drop-off)
- Vehicle, Rechargeable and Alkaline Batteries
- Plastic bags
- Styrofoam (no peanuts)
- Food waste for compost
- Mulch available to residents **FREE!**

#### MATERIALS NOT ACCEPTED

- Household Trash
- Furniture
- Antifreeze
- Grease
- Oil Filters
- Paints, chemicals, solvents
- Electronics
- Refrigerators, freezers, A/C units
- Tanks & drums
- Lumber, tree stumps, root balls
- Concrete, asphalt, rocks
- Dirt or sod

#### HARD TO RECYCLE EVENT

### GREEN GIRL RECYCLING

1801 Boston Ave., Longmont

OCT 5–17, 9 AM–4 PM

This by-reservation only event is for Longmont residents only and provides the opportunity to dispose of those hard-to-recycle items that are not collected in the curbside recycling bins. Please note: some items are free of charge to drop off and others have a fee for disposal.

[greengirlrecycling.com/hard-to-recycle-event](http://greengirlrecycling.com/hard-to-recycle-event)

#### HAZARDOUS MATERIALS

### HOUSEHOLD HAZARDOUS WASTE DROP-OFF DAY\*

Waste Services Building  
110 S. Martin St., Longmont

AUG. 22, 8 AM–NOON

[longmontcolorado.gov/WasteServices](http://longmontcolorado.gov/WasteServices)



### ASK THE WASTE WIZARD

Use this easy web tool that helps you sort your waste properly. Just type in the name of the item and the Waste Wizard tells you exactly how to dispose of it.

[bit.ly/longmont-wastewizard](http://bit.ly/longmont-wastewizard)

How do I get rid of my mattress?

Is this recyclable?



## 24/7 SERVICEWORKS!

**SERVICEWORKS!** is our online tool to help residents manage their Waste Services and submit help requests 24/7.



Go to

[ServiceWorks.LongmontColorado.gov](http://ServiceWorks.LongmontColorado.gov)

Tell us how we may assist you. It's that easy!

#### Use ServiceWorks! to:

- Change your container size
- Request compost service
- Request cart repairs
- Notify us if your collection was missed
- Ask us general questions about Waste Services



# RECYCLING

What can go in my bin?

What is recyclable?



## THINK BEFORE YOU THROW!

It's more important now than ever to ensure items are going into the right bins.

[longmontcolorado.gov/wasteservices](http://longmontcolorado.gov/wasteservices)  
303-651-8416



### PLEASE...

- ✓ Set your blue lid recycle cart out by 7 am.
- ✓ Place your cart at least 2 feet away from trash or recycling carts, vehicles and other obstructions.
- ✓ Place recyclables loose and unbagged in your curbside cart.
- ✓ Wash cart periodically to prevent odors or pests.

### PLEASE...

- NO** Styrofoam® Containers
- NO** Frozen Food Boxes
- NO** Shredded Paper
- NO** Hard-Back Books
- NO** Plastic Bags
- NO** Yard Waste

## PAPER & CARDBOARD



Paperback Books

Paper Egg Cartons



Magazines, Brochures, Newspapers & Catalogs



Cardboard Boxes & Paper Bags  
*flatten boxes*



Greeting Cards, Mail, File Folders, Office Paper & Blueprints  
*no neon or construction paper*



## CONTAINERS | Empty & Rinse



Clean, Balled Aluminum Foil 2" or Larger & Pie Pans

Aluminum/Metal Cans  
*do not flatten*



Aerosol Cans  
*empty, no caps*



Paper Milk/Juice Cartons  
*no foil pouches, do not flatten*



Loose Metal Jar Lids & Steel Bottle Caps

Glass Bottles  
*no attached caps*



## PLASTICS | Empty & Rinse



Jugs

Sturdy #2 & #5 Souvenir Cups



Yes - you can recycle plastic screw top caps - just be sure to leave them on.

Jars



Bottles

Tubs



Berry Containers (remove liner), and other Plastic Clamshell Containers



Prescription Containers  
*empty*



Plastic Tub Lids



Take Out Containers  
*no food*



Plastic Crates

Rigid Plastic Toys  
*remove metal axles, must fit in cart*



Buckets  
*handles OK*



Flower Pots



Hard Plastic Four- and Six-Pack Holders



# COMPOSTING



**NO PIZZA BOXES OR CARDBOARD**  
— put in Recycle cart!



## FOOD



## YARD DEBRIS



*No larger than 6 inches in diameter*

### CERTIFIED COMPOSTABLE BAGS

Ensure bags are 3-gallon size or less, and are certified by the CMA (Compost Manufacturer Alliance). No other bags are accepted in the compost bin.



COMPOST

### PLEASE...

- ✓ Set your green lid compost cart out by 7 am.
- ✓ Place your cart at least 2 feet away from trash or recycling carts, vehicles and other obstructions.
- ✓ All compostables must fit in the cart. Always keep cart lid closed.
- ✓ Wash cart periodically or use certified compostable bags to prevent odors or pests.

### PLEASE...

- NO** Aluminum or Metal
- NO** Construction Debris
- NO** Pet Waste
- NO** Plastic or Plastic Coatings
- NO** Dirt, Rocks or Sod; Treated/Painted Wood
- NO** Soiled or Shredded Paper or Paper Products
- NO** Cardboard or Pizza Boxes
- NO** Styrofoam®
- NO** Glass or Ceramics
- NO** items/products marked "Compostable"

