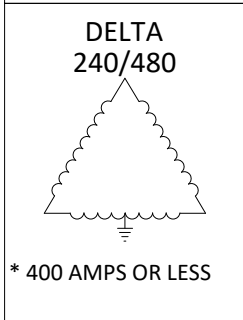
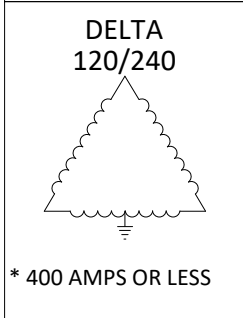
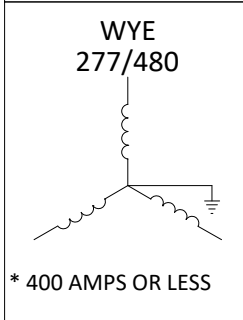
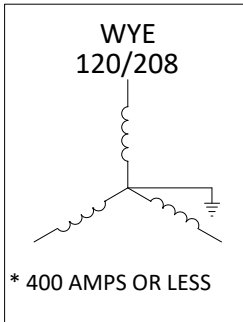


\* ALL COMMERCIAL METERING INSTALLATIONS ARE REQUIRED TO HAVE A HOT SEQUENCED DISCONNECT SWITCH



\*277/480V 401 AMPS AND ABOVE WILL REQUIRE CT'S AND PT'S.

\*THE USE OF SECONDARY CONDUCTORS WITH CONTINUOUS JACKET COLORS MUST BE USED.

\*LEVER OPERATED BYPASS REQUIRED ON ALL SERVICES 400 AMPS OR LESS.

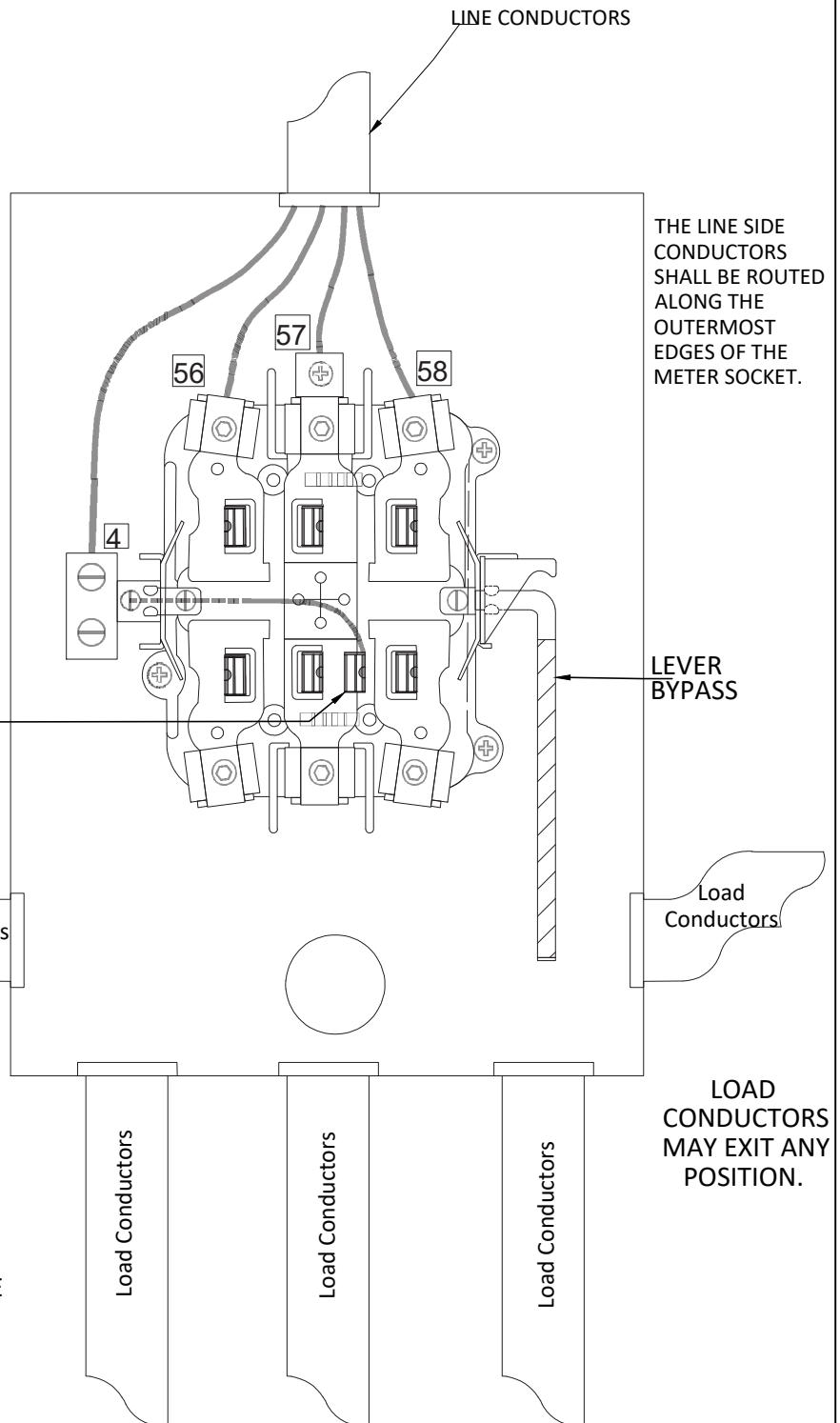
\*7TH TERMINAL FOR NEUTRAL SHALL BE CONNECTED ON THE LOAD SIDE OF THE METER SOCKET BETWEEN B&C PHASES.

DELTA IS FOR EXISTING SERVICES ONLY

\*HIGH-LEG MARKING. THE SERVICE ENTRANCE CONDUCTOR INTENDED TO BE CONNECTED TO THE HIGH-LEG OF A 3-PHASE, 4 WIRE DELTA-CONNECTED SYSTEM SHALL BE DURABLY AND PERMANENTLY MARKED AT BOTH ENDS OF THE CONDUCTOR BY AN OUTER FINISH THAT IS ORANGE IN COLOR AND SHALL BE INSTALLED IN THE FAR RIGHT HAND C PHASE POSITION OF THE METER MOUNTING BLOCK.

CALL 1-800-922-1987 TO OBTAIN UTILITY LOCATES

NOT TO SCALE



# WIRING CONFIGURATION FOR 3 PHASE NON- CT RATED

CITY OF  
**LONGMONT**  
COLORADO

1100 S SHERMAN ST  
LONGMONT, CO 80501

PHONE: 303-651-8386  
FAX: 303-651-8796

Revision #:  
Approved by:  
DATE APPROVED: 2025  
File: MTR DRAWINGS\_2025.dwg  
**DETAIL**

**MTR-16**