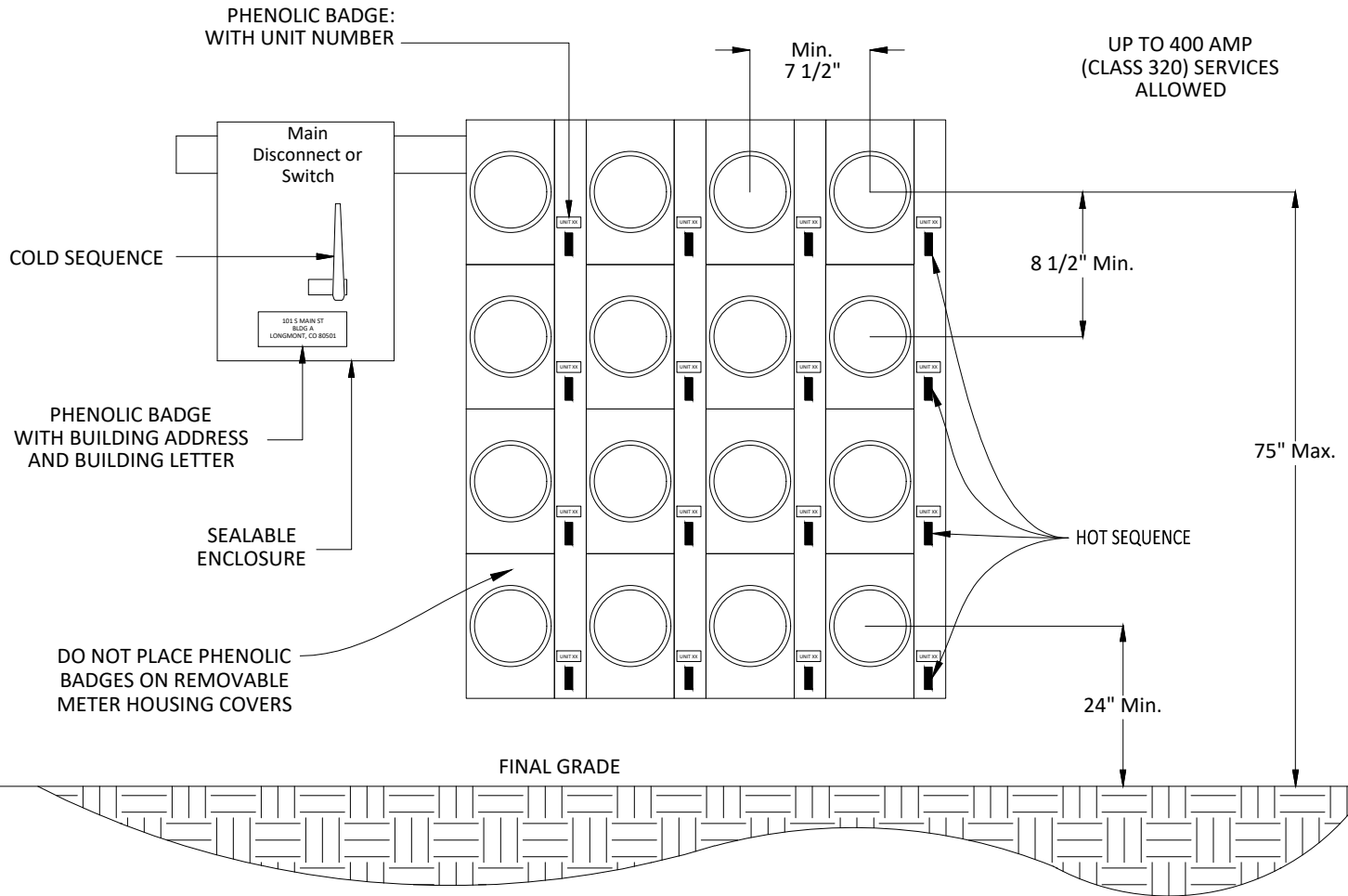


TYPICAL COMBINATION SERVICE TERMINATION ENCLOSURE AND METER SOCKET PANELS FOR MULTI-METER APPLICATIONS (GREATER THAN 1)



NOTES:

1. THE LINE SIDE OF THE METER BANK WILL BE COLD SEQUENCED AND SHALL INCLUDE PROVISIONS FOR AN LPC SEAL.
2. SEALS WILL BE USED BY LPC TO SECURE THE ENCLOSURE FROM UNAUTHORIZED ENTRY BUT ALLOW THE CUSTOMER EMERGENCY ACCESS FOR FUSE REPLACEMENT.
3. THE MAIN DISCONNECT SHALL BE COLD SEQUENCED AND LABELED WITH THE BUILDING ADDRESS AND BUILDING LETTER.
4. ALL METERED SERVICES, EXCLUDING CT RATED SERVICES, SHALL BE EQUIPPED WITH A LEVER OPERATED BYPASS.
5. REFER TO MTR-14 FOR SINGLE PHASE METER HOUSING 400 AMP OR LESS DETAILS
6. EACH INDIVIDUAL METER WILL HAVE AN APPROPRIATELY SIZED LOAD SIDE DISCONNECT BREAKER. EACH METER AND IT'S ASSOCIATED DISCONNECT MUST BE PERMANENTLY LABELED TO IDENTIFY THE CUSTOMER UNIT NUMBER.
7. ALL LABELS MUST BE CONSTRUCTED OF ENGRAVED PHENOLIC BADGES AND PERMANENTLY RIVETED TO THE ELECTRICAL EQUIPMENT. NOTE: THEY SHOULD NOT BE ATTACHED TO REMOVABLE METER HOUSING COVERS.
8. PHENOLIC BADGES SHALL BE A MINIMUM OF 1" BY 2" WITH TEXT A MINIMUM OF 3/8" IN HEIGHT.
9. METERS WILL NOT BE INSTALLED UNTIL A RING OUT INSPECTION HAS BEEN APPROVED VIA THE METERING DEPT.
10. INSURE ITEMS 1-9 ABOVE ARE COMPLETED AND THE DOOR OF THE PHYSICAL UNIT IS LABELED PRIOR TO SCHEDULING THE RING OUT INSPECTION.
11. A SWITCHED LIGHT OR TEMP OUTLET MUST BE PRESENT AT THE TIME OF THE RING OUT INSPECTION TO VERIFY THE ELECTRICAL FEEDER GOES FROM THE METER TO THE INTENDED UNIT.
12. REFER TO METERING REQUIREMENTS SECTION 703.00

CALL 1-800-922-1987 TO OBTAIN UTILITY LOCATES

NOT TO SCALE

**MULTIPLE METER SOCKET INSTALLATIONS
FOR INDIVIDUAL SERVICE SIZES 400 AMPS
(CLASS 320) OR LESS**



1100 S SHERMAN ST
LONGMONT, CO 80501

PHONE: 303-651-8386
FAX: 303-651-8796

Revision #:
Approved by:
DATE APPROVED: 2024
File: MTR DRAWINGS_2024.dwg
DETAIL
MTR-9