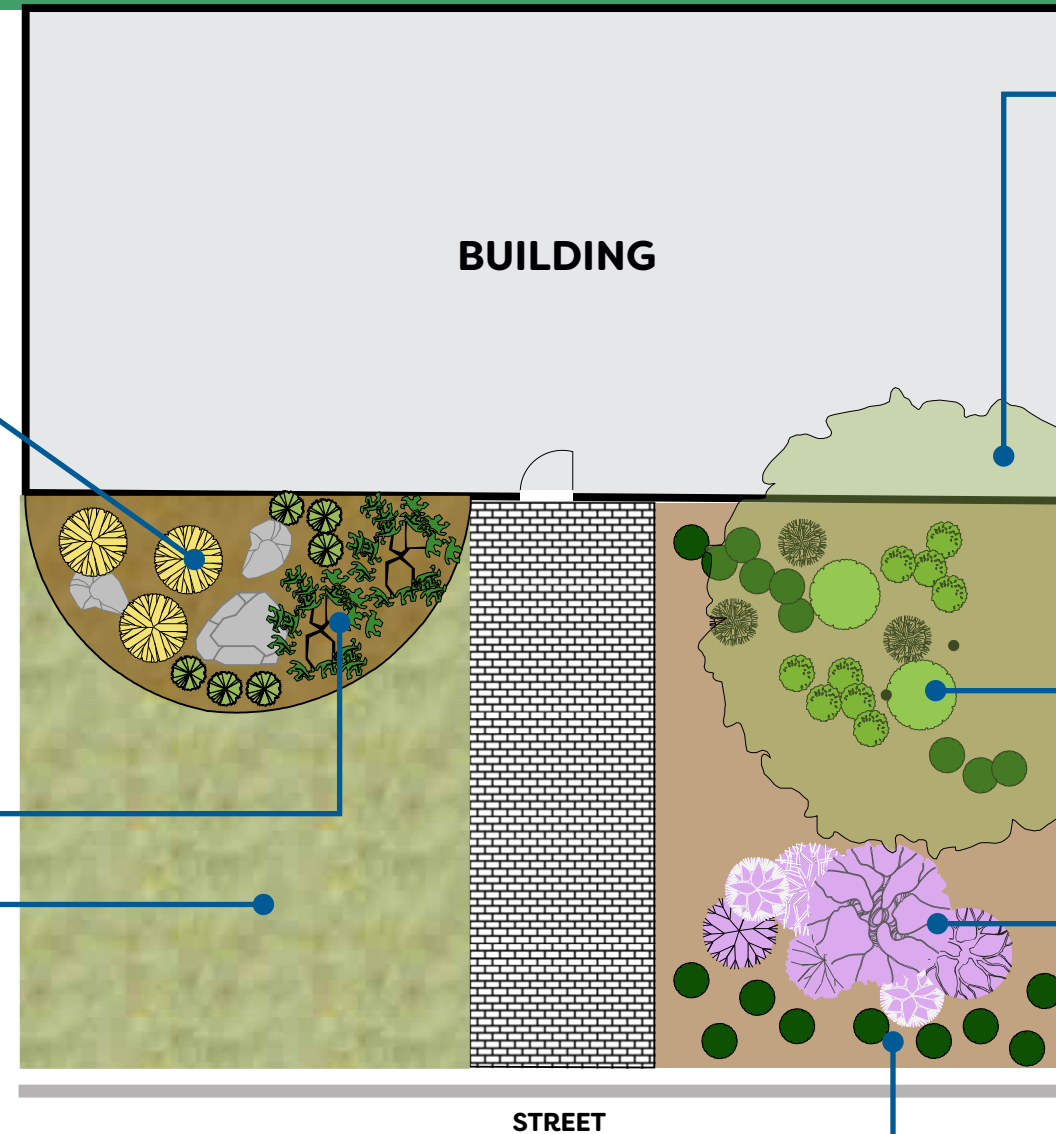


Water Wise Vegetation Elements for Longmont Landscapes

HOW TO USE THIS GUIDE

This is not an extensive plant list by any means but gives examples of reliable Water Wise plants to fulfil a variety of landscape needs.

For more plant recommendations see:
 Plant Select- plantsselect.org
 High Plains Environmental Center- suburbitat.org
 Colorado Tree Coalition- coloradotrees.org



GRASSES AND FIBER PLANTS

- Bouteloua gracilis* – Blue Grama Grass
- Festuca idahoensis* ‘Siskiyou Blue’ – Idaho Fescue
- Hesperaloe parviflora* – Red Yucca
- Muhlenbergia reverchonii* ‘Undaunted® Ruby’ – Undaunted® Ruby Muhly Grass*
- Schizachyrium scoparium* – Little Bluestem
- Sporobolus heterolepis* – Prairie Dropseed
- Sporobolus wrightii* – Giant Sacaton
- Yucca glauca* – Soapweed Yucca

SHRUBS

- Amelanchier alnifolia* – Saskatoon Serviceberry 🦋
- Amorpha canescens* – Lead Plant 🦋
- Atriplex canescens* – Four-wing Saltbush ☹️
- Ericameria nauseosa* – Rabbitbrush 🦋
- Fallugia paradoxa* – Apache Plume
- Krascheninnikovia lanata* – Winterfat ☹️
- Prunus pumila* – Sand Cherry
- Ribes aureum* – Golden Currant
- Rhus trilobata* – Three-leaf Sumac

TURF GRASS ALTERNATIVES

- Buchloe dactyloides* – Buffalo Grass
- Bouteloua gracilis* – Blue Grama Grass
- Cynodon* ‘PWINO4S’ – DogTuff* ☹️
- Fescue Blends (various species)

GROUND COVERS

- Arctostaphylos uva-ursi* – Bearberry
- Antennaria* spp. – Pussytoes
- Epilobium canum* ‘Orange Carpet®’ – Hummingbird Trumpet*
- Paxistima canbyi* – Mountain Lover
- Tanacetum densum* var. *amanii* – Partridge Feather*
- Eriogonum umbellatum* ‘Kannah Creek®’ – Sulfur Buckwheat*
- Veronica liwanensis* – Turkish Veronica*
- Zinnia grandiflora* – Prairie Zinnia*

SHADE TREES

- Aesculus hippocastanum* – Horse Chestnut
- Celtis occidentalis* – Common Hackberry
- Catalpa speciosa* – Catalpa
- Crataegus viridis* ‘Winter King’ – Hawthorn
- Quercus macrocarpa* – Bur Oak

SHADE TOLERANT PLANTS

- Arctostaphylos uva-ursi* – Bearberry
- Berberis repens* – Creeping Oregon
- Grape Calamagrostis brachytricha* – Korean Feather Grass*
- Carex appalachica* – Appalachian Sedge
- Daphne x burkwoodii* ‘Carol Mackie®’ – Carol Mackie® Daphne*
- Heuchera* spp. – Coral Bells
- Festuca idahoensis* ‘Siskiyou Blue’ – Idaho Fescue
- Symphoricarpos occidentalis* – Western Snowberry

PERENNIAL FLOWERS

- Agastache* spp. – Hyssop
- Anaphalis margaritacea* – Pearly Everlasting 🦋
- Campanula rotundifolia* – Harebells
- Dalea purpurea* – Purple Prairie Clover
- Engelmannia peristenia* – Engelmann’s Daisy* 🦋
- Eriogonum* spp. – Sulfur Buckwheat
- Gaillardia* spp. – Blanket Flower
- Liatris ligulistylis* – Meadow Blazingstar*
- Ratibida columnifera* – Prairie Coneflower
- Rudbeckia* spp. – Black-eyed Susan 🦋
- Mirabilis multiflora* – Colorado Four O’Clock
- Solidago* spp. – Goldenrods 🦋

LEGEND

- Particular value for pollinators 🦋
- Plant Select introduction *
- Salt Tolerant ☹️

